

The cosmetics in this product have been sealed with a tamper-evident seal. If this seal is broken, call Mattel Consumer Affairs at 1-800-524-TOYS for a replacement.

#### CLEANING:

- If hair colorant gets on fingers, wash with warm soapy water.
- Normal laundering should remove stains from most materials.
- Do not use pre-wash or chlorine bleach.
- Repeat laundering on severe stains.

#### HAIR COLORANT INGREDIENTS:

Water, Titanium Dioxide, Triethanolamine, Hydroxypropyl Methylcellulose, Carbomer, Phenoxyethanol, Methylparaben, Butylparaben, Ethylparaben, Propylparaben. May contain: Carmine, FD&C Blue No. 1 and FD&C Yellow No.5.

Hair colorant net. 3.0 ml, .10 fl. oz.

#### 2 YEAR LIMITED WARRANTY

Mattel, Inc. warrants to the original consumer purchaser of any product it manufactures that the product will be free of defects in material or workmanship for two years (unless specified in alternate warranties) from the date of purchase. If defective, return the product along with proof of the date of purchase, postage prepaid, to Consumer Adjustment Center, 15930 E. Valley Boulevard, City of Industry, California 91744 for replacement or refund at our option. This warranty does not cover damage resulting from accident, misuse, or abuse. **VALID ONLY IN U.S.A.** This warranty gives you specific legal rights and you may also have other rights which vary from state to state.

Send only the product to the address above. Send all correspondence to Consumer Affairs, Mattel, Inc., 333 Continental Blvd., El Segundo, CA 90245-5012, U.S.A. Or you may phone us toll-free at 1-800-524-TOYS, Monday through Thursday: 8:00 a.m.-5:00 p.m. PST (11:00 a.m.-8:00 p.m. EST); Friday: 8:00 a.m.-12:30 p.m. PST (11:00 a.m.-3:30 p.m. EST).

**WARNING:**  
CHOKING HAZARD - Small parts.  
Not for children under 3 years.

#### CONSUMER INFORMATION

**YOU CAN TELL IT'S MATTTEL CALL** us toll free or write with any comments or questions about our toys or service. Monday-Thursday 8:00 a.m.-5:00 p.m. PST, 11:00 a.m.-8:00 p.m. EST; Friday, 8:00 a.m.-12:30 p.m. PST, 11:00 a.m.-3:30 p.m. EST. Outside U.S.A. see telephone directory for Mattel listing. Consumer Affairs, Mattel, Inc., 333 Continental Blvd., El Segundo, CA 90245 USA.

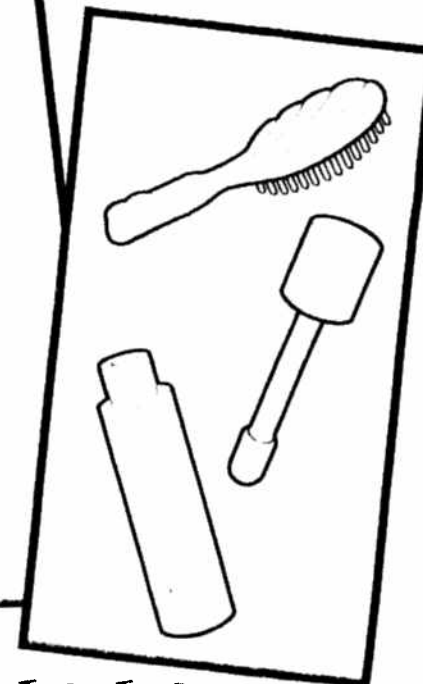
**1 (800) 524-TOYS**

**CE** CONFORMS TO THE SAFETY REQUIREMENTS OF ASTM F963.  
**We are dedicated to quality products.**

MATTEL  
19667-0920

# PURPLE PANIC™ Christie Doll

## INSTRUCTIONS



Doll cannot stand alone.

## CONTENTS

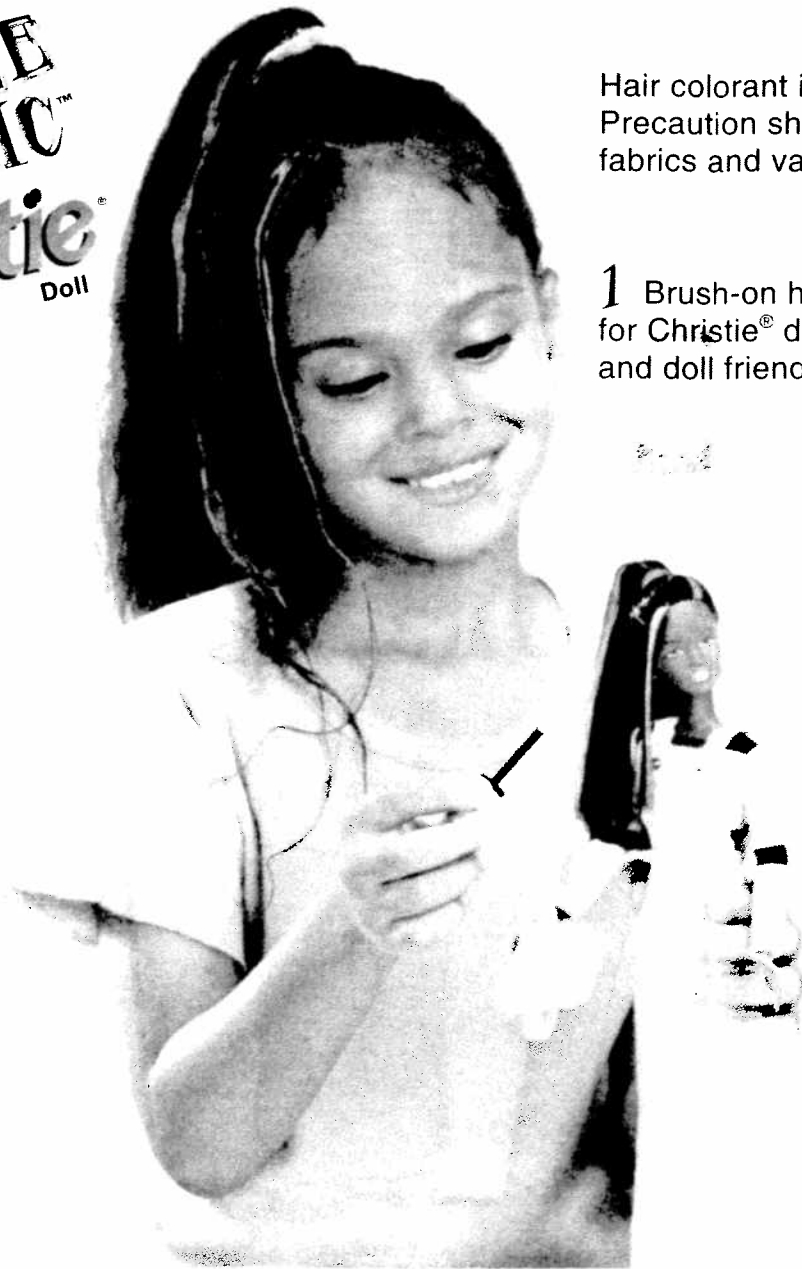
Please remove everything from the package and compare to the contents shown here.

If any items are missing, please call 1-800-524-TOYS.

©1997 Mattel, Inc., El Segundo, CA 90245.  
PRINTED IN HONG KONG. All Rights Reserved.



# PURPLE PANIC™ Christie® Doll



Hair colorant is non-toxic and washable, but may stain certain surfaces. Precaution should be taken to keep make-up away from carpets, fabrics and varnished/unvarnished surfaces.

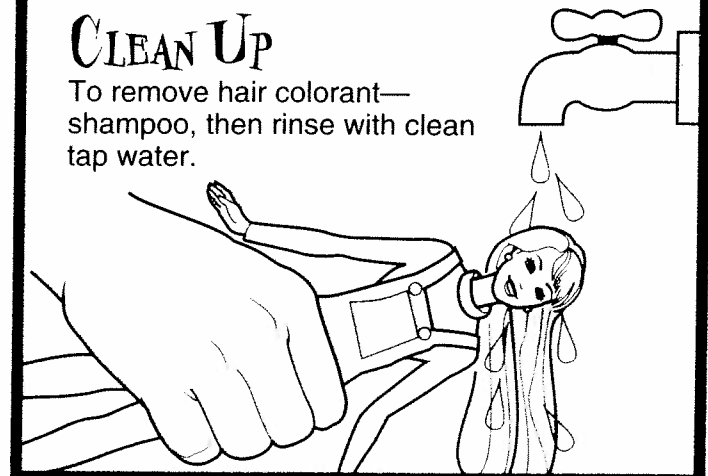
**1** Brush-on hair color for Christie® doll and doll friends!



**2** Brush-on hair color for you, too!

## CLEAN UP

To remove hair colorant—shampoo, then rinse with clean tap water.



**Warning: Hair colorant is intended for doll hair and child's hair only. Keep hair color and brush away from child's eyes.**

Colors, hair colorant, applicator and decorations may vary from that shown. For use with Christie®, Barbie®, Teresa® and Teen Skipper™ dolls. Fashions not for use with other Skipper® dolls.