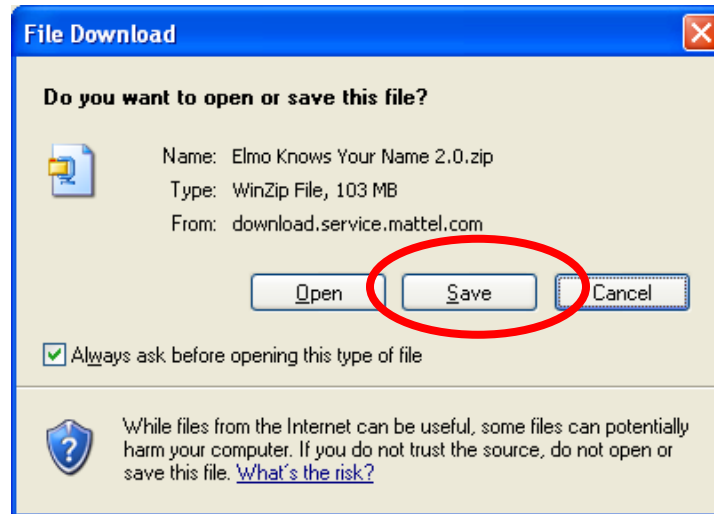
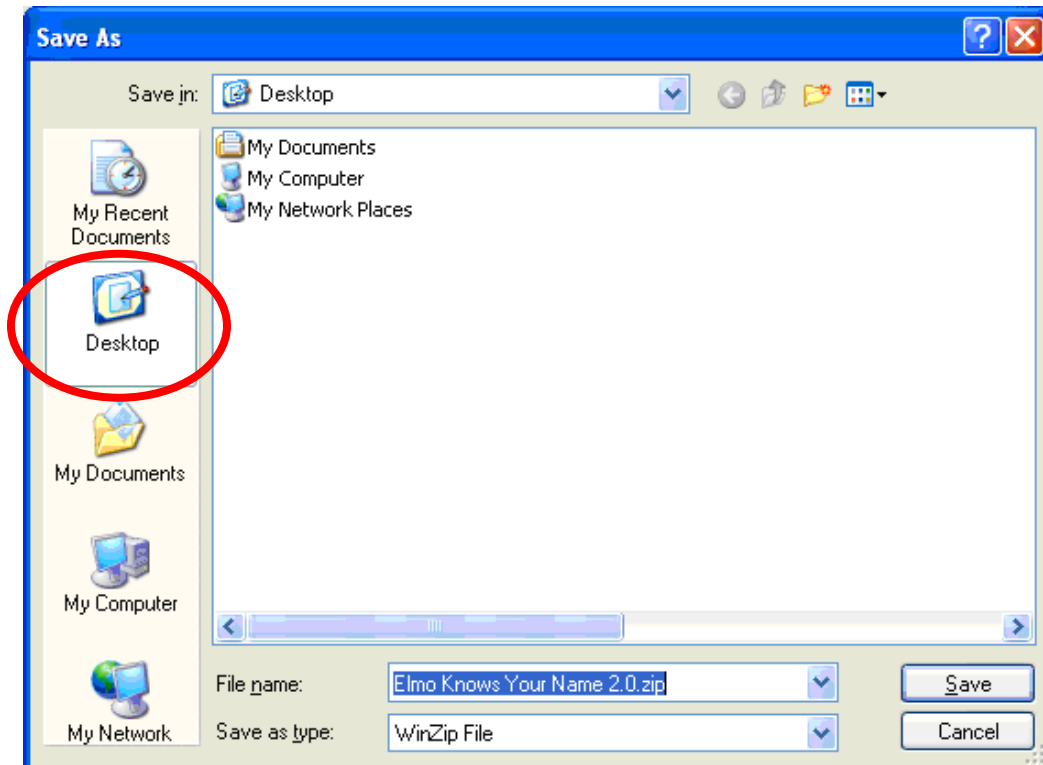


## Step by Step Instructions for downloading and installing the K8748 Elmo Knows Your Name™ 2.0 Software

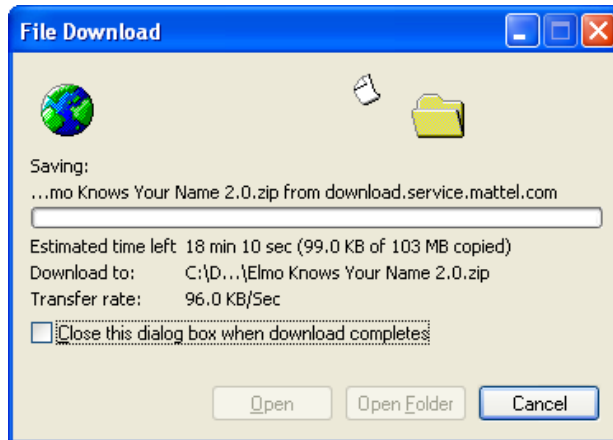
- [Click Here](#) to download the Elmo Knows Your Name™ 2.0 Software.
- Click **Save**.



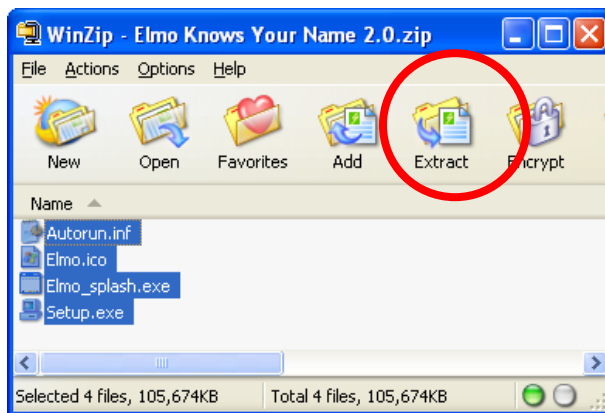
- Save this file to a convenient location such as the **desktop**.



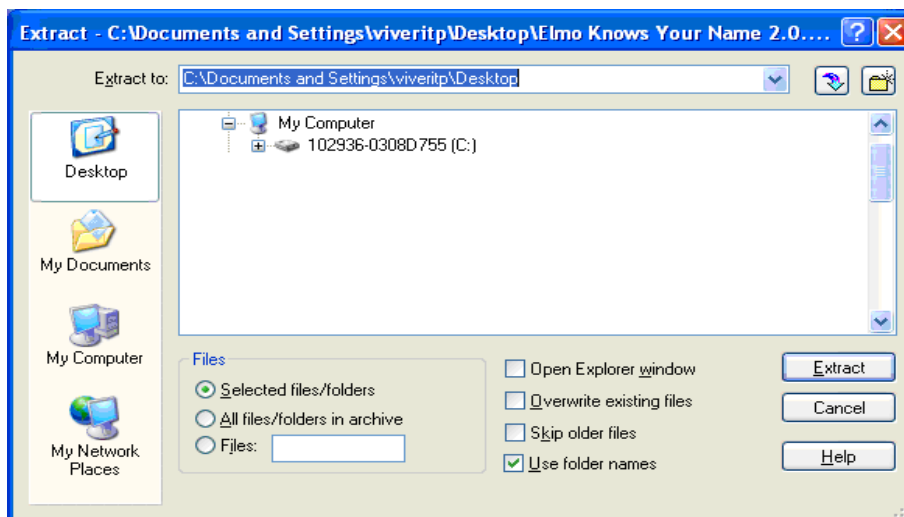
- Wait for the file to **download**.



- **Navigate** to the location where the Elmo Knows Your Name 2.0.zip file is saved.
- **Double click** the downloaded file. WinZip will open.
- Select all files and click **“Extract”**.

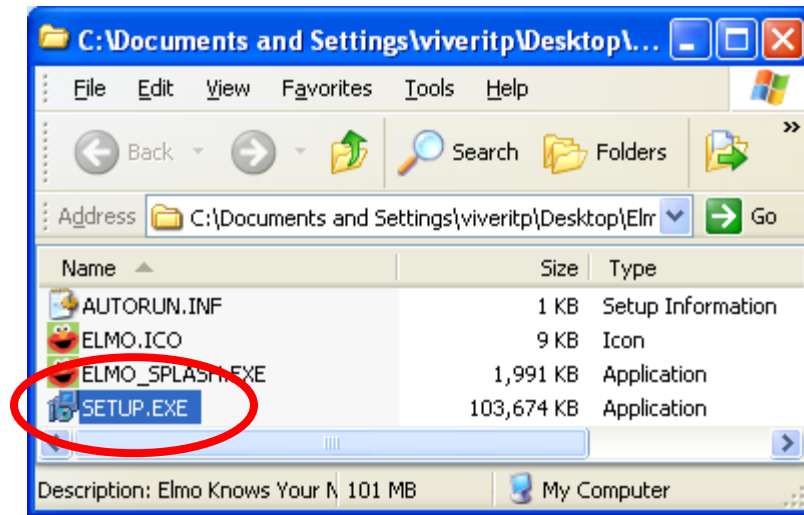


- In the window that opens, click the **“Extract”** button.

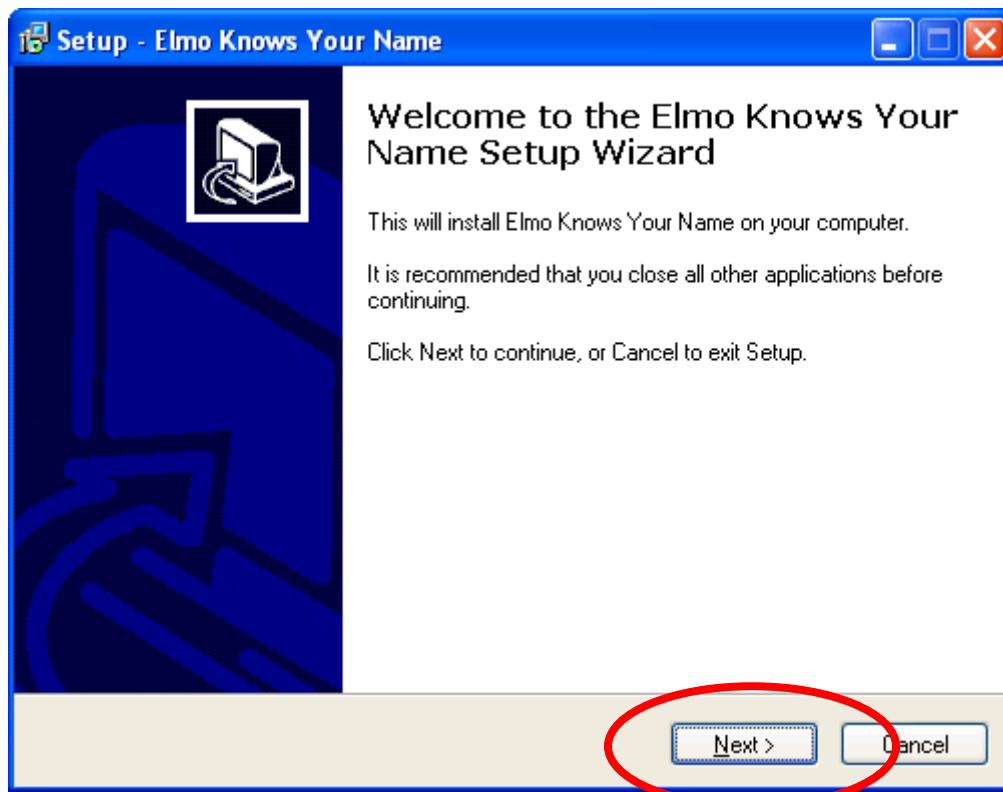


- The files will extract to a folder called **Elmo Knows Your Name 2.0**.
- **Open** the Elmo Knows Your Name 2.0 folder.

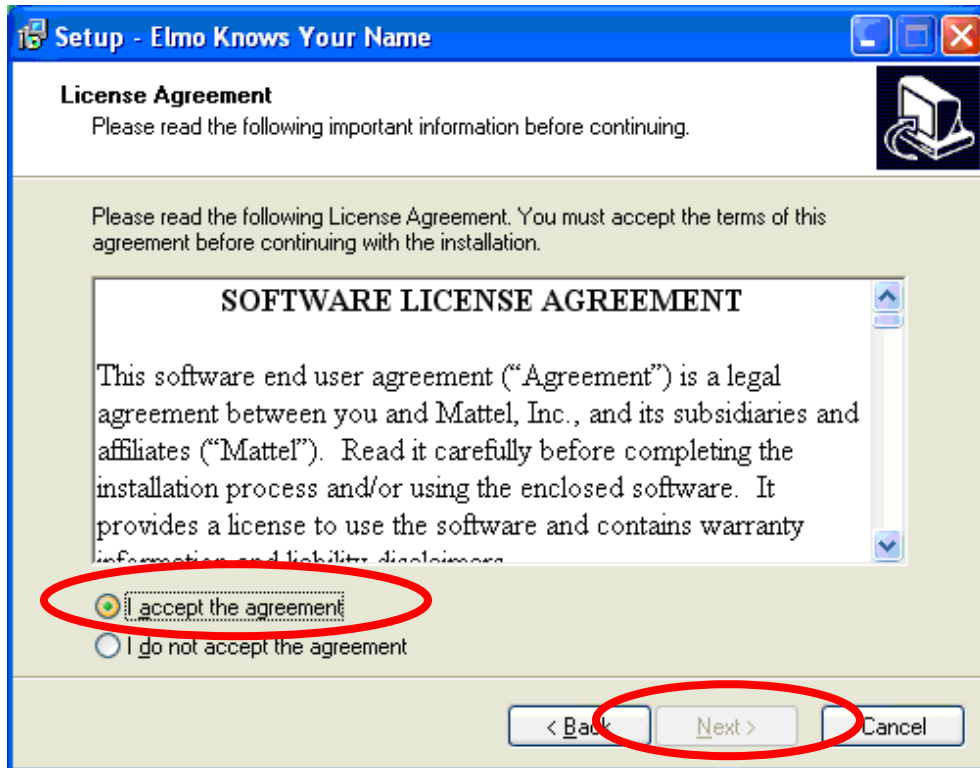
- Double click on the **setup.exe** icon.



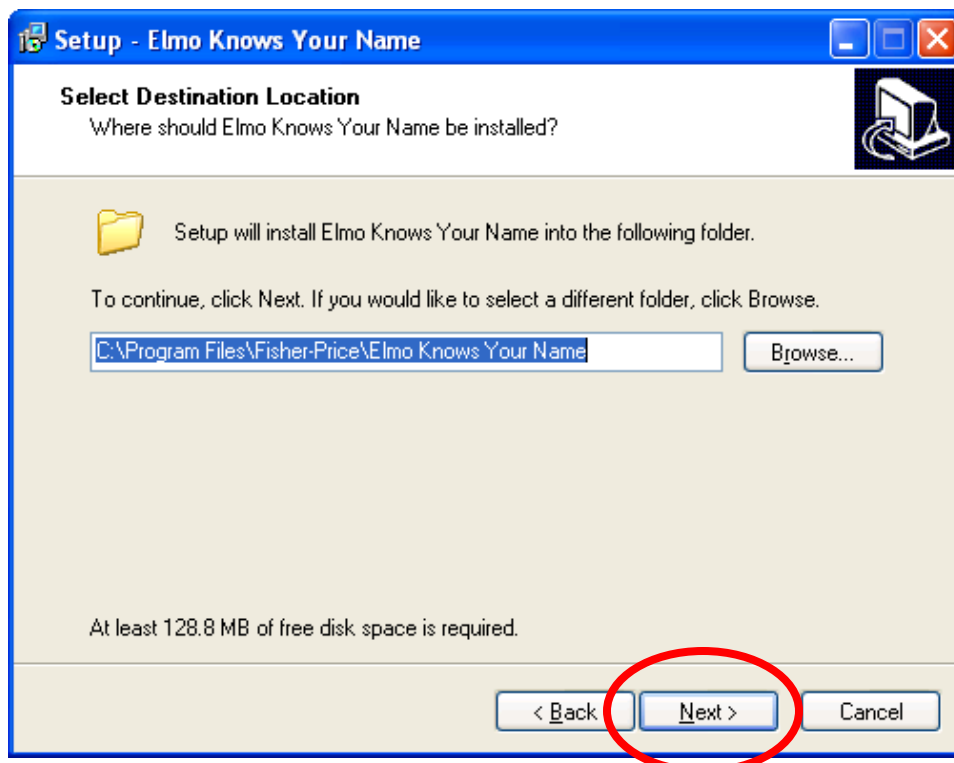
- Click the **“Next”** button.



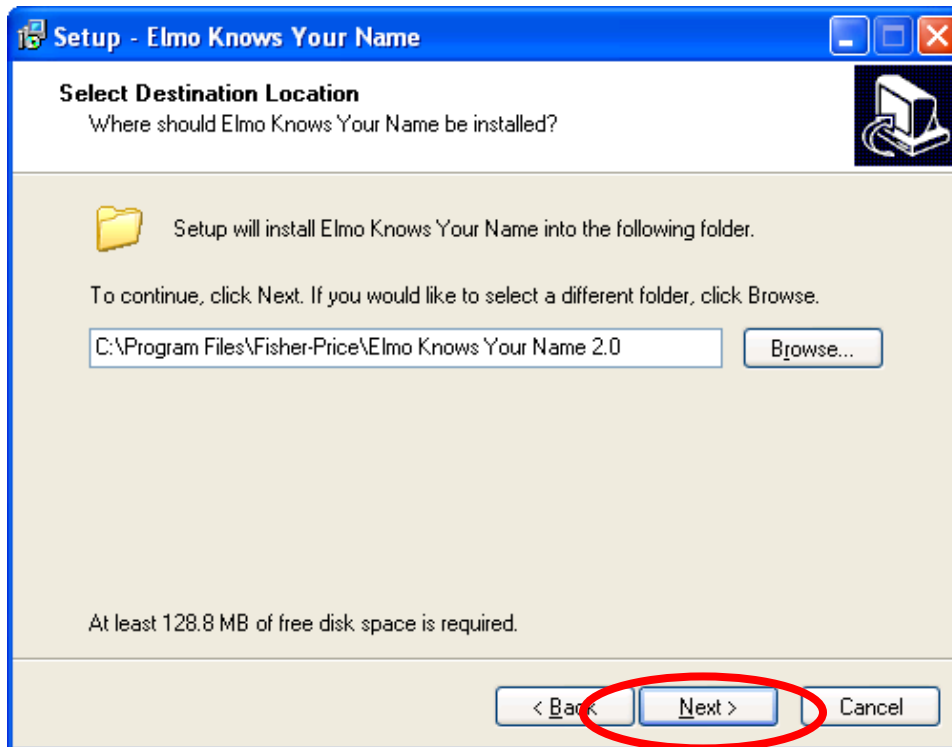
- To proceed, click on **“I accept...”** and the **“Next”** button.



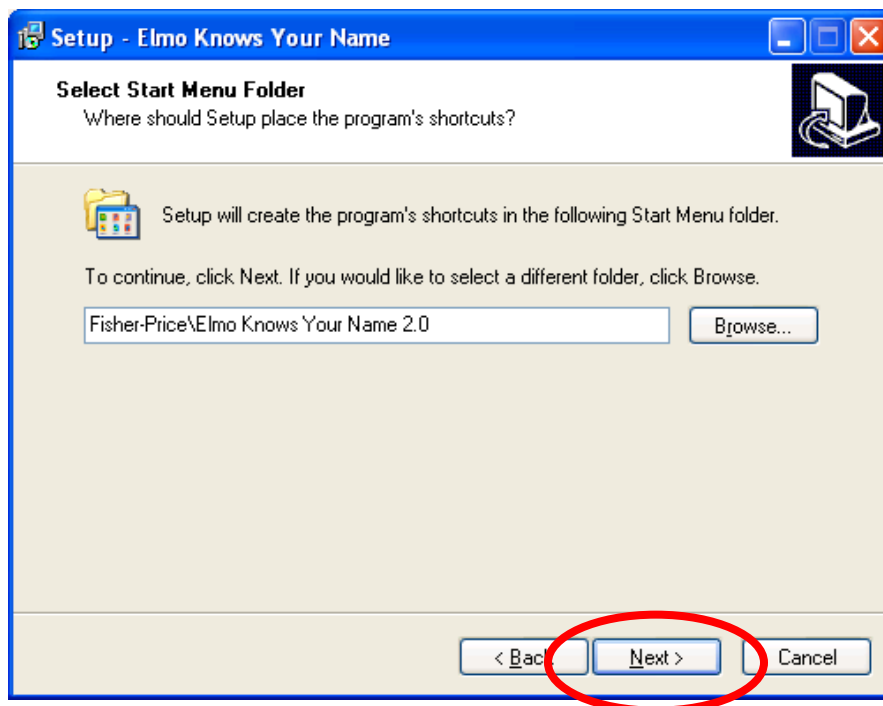
- This window displays the **default location** for the program. Please click **“Next”**



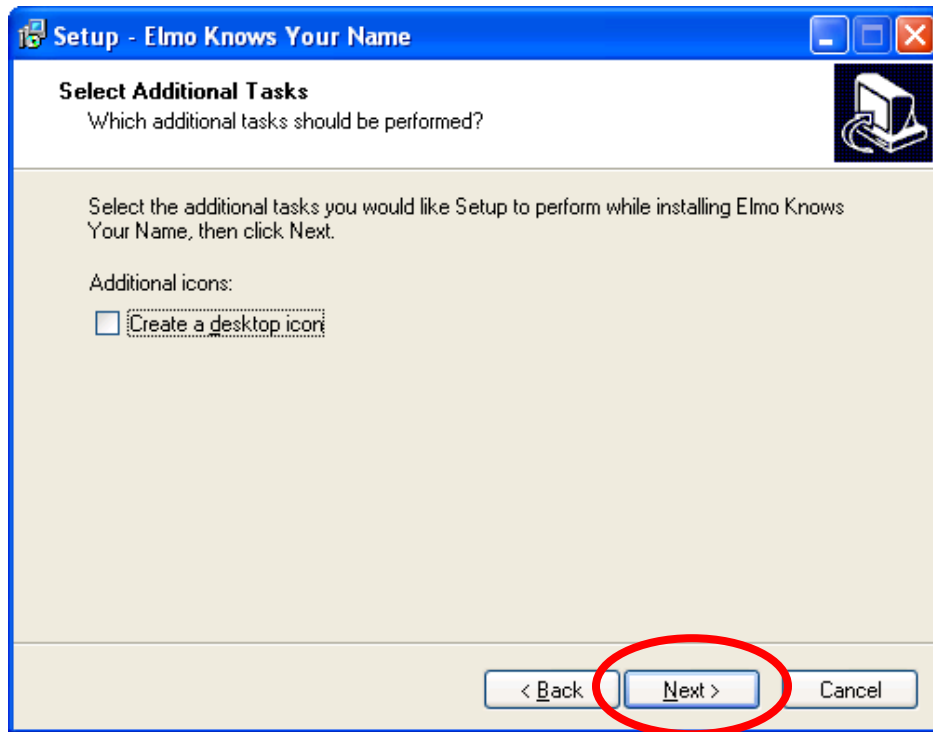
- Click the **“Next”** button.



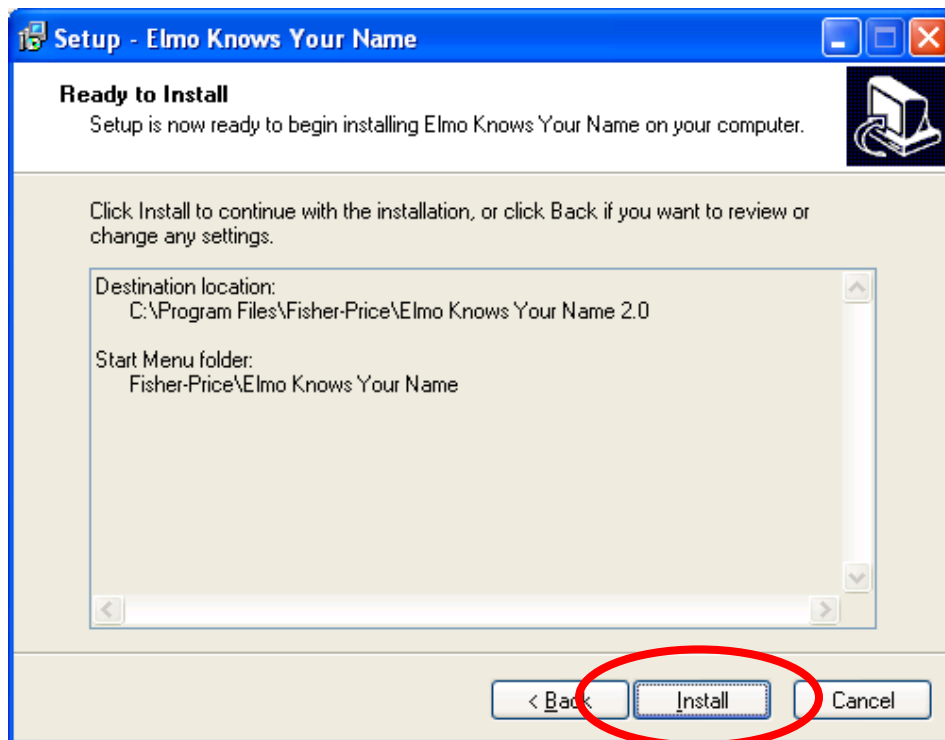
- This window displays the **default location** of the shortcut in the start menu. Please click **“Next”**.



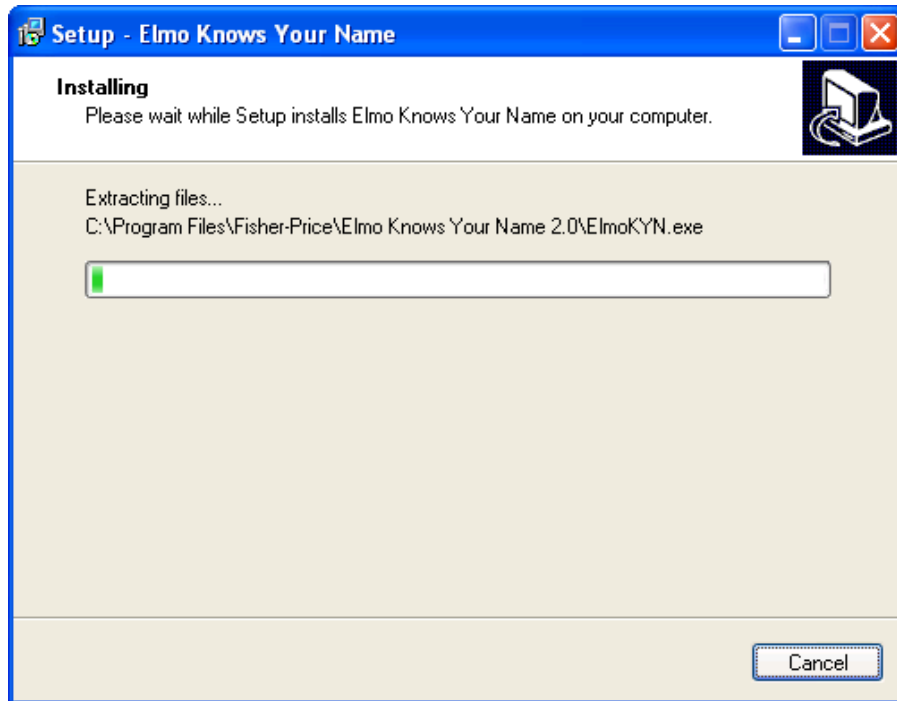
- Click the **“Next”** button.



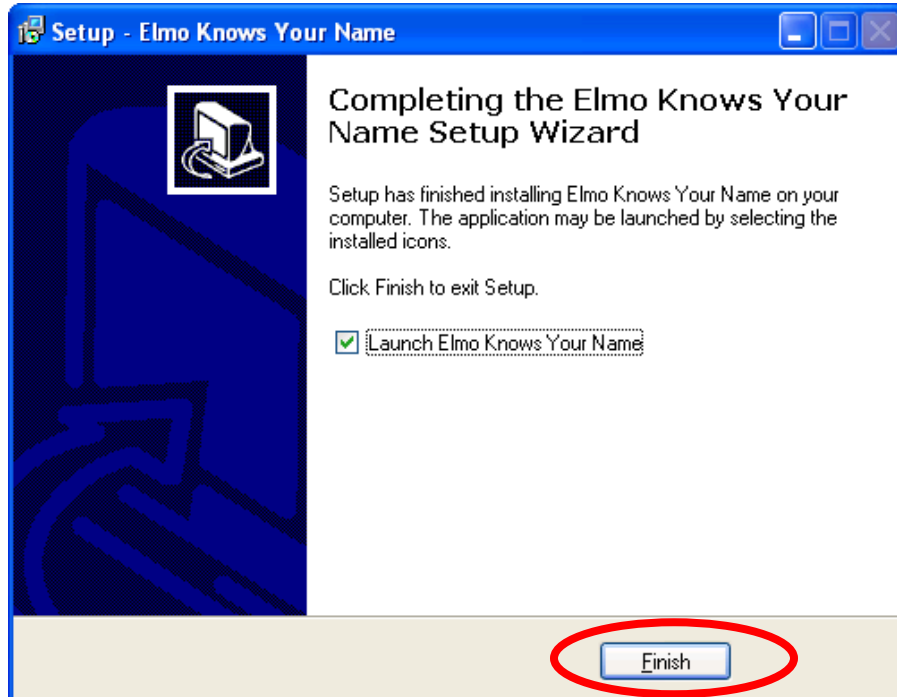
- Click **"Install"** to continue.



- As the software is installed, the progress bar turns from **white to green**.



- When complete, the installer offers the following **options**.
- Select **“Launch Elmo Knows Your Name”**.
- Click the **“Finish”** button.



- The software is now ready to be used.