



Dora's Talking House™

INSTRUCTION SHEET

Please keep these instructions for future reference as they contain important information.

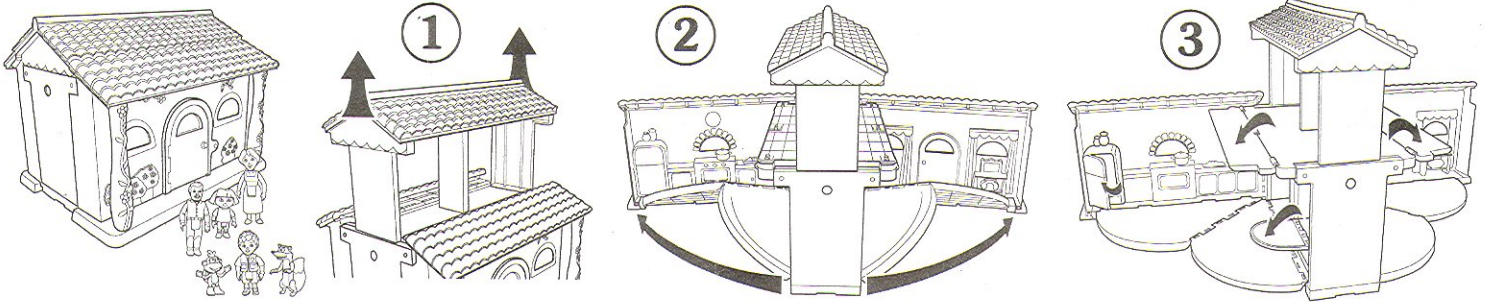
BEFORE YOU BEGIN

Please remove and discard the "Try Me" pull-tab from the bottom of the toy. Once the TRY ME pull-tab is removed, the toy will perform its full play pattern as described below.

OPENING DORA'S TALKING HOUSE

It is preferable that you follow this sequence in order to unfold and expand DORA'S TALKING HOUSE:

1. Lift the roof at the center of the house. Be sure to lift both sides of the roof evenly, at the same time, revealing the second floor.
2. Open the side walls. As the side walls swing open the lower level floors will unfold and fall into place.
3. Once the house is opened you can fold down the second floor extensions for additional play area on the second level. You can also now fold down the table and open the refrigerator.



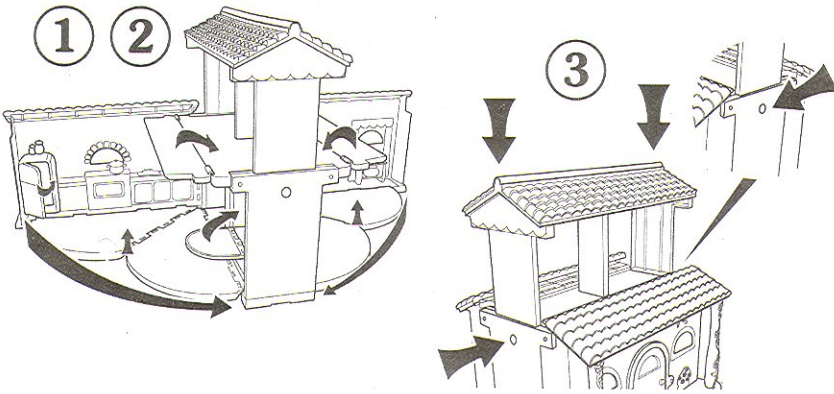
FOLDING DORA'S TALKING HOUSE

It is preferable that you follow the above sequence in reverse order to fold DORA'S TALKING HOUSE into the closed position:

1. Close the refrigerator door and fold up the table and second floor extensions before attempting to close the house.
2. Close the side walls by lifting the lower level floors from their center fold. Push the walls all the way into the house until they are flush up against the center part of the house.
3. Lower the second level by pressing the two release buttons located on the sides of the house.

IMPORTANT:

BE SURE TO PRESS BOTH BUTTONS SIMULTANEOUSLY AND LOWER BOTH SIDES OF THE ROOF EVENLY AND AT THE SAME TIME.



ACTIVATING THE SOUNDS, LIGHTS AND MUSIC

Once the house is opened, there are 6 places where you can activate sounds, phrases, lights and music:

In the LIVING ROOM:

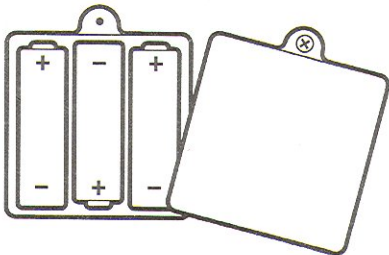
- Press the doorbell
- Press the family photo
- Press the radio

In the KITCHEN:

- Open the refrigerator door
- Press the knobs on the oven
- Pull down the kitchen table

At any time you can de-activate the lights and sounds by using the ON/OFF switch, located in the doorway between the kitchen and the living room of the house.

BATTERY INSTALLATION



Unscrew and lift cover away from back of product. Replace batteries as shown.

BATTERY SAFETY INFORMATION

- In exceptional circumstances batteries may leak fluids that can cause a chemical burn injury or ruin your toy (product). To avoid battery leakage:
- Non-rechargeable batteries are not to be recharged.
 - Rechargeable batteries are to be removed from the product before being charged (if designed to be removable).
 - Rechargeable batteries are only to be charged under adult supervision (if designed to be removable).
 - Do not mix alkaline, standard (carbon-zinc), or rechargeable (nickel-cadmium) batteries.
 - Do not mix old and new batteries.
 - Only batteries of the same or equivalent type as recommended are to be used.
 - Batteries are to be inserted with the correct polarity.

- Exhausted batteries are to be removed from the product.
- The supply terminals are not to be short-circuited.
- Dispose of battery(ies) safely.
- Do not dispose of this product in a fire. The batteries inside may explode or leak.

Batteries included are for demonstration purposes only. For longer life use only alkaline batteries. Requires 3 "AA" (LR6) batteries.

If sounds play slowly or distort or the lights dim, replace 3 "AA" batteries as shown.

©2003, 2004 Viacom International Inc. All Rights Reserved. Nickelodeon, Nick Jr., Dora the Explorer and all related titles, logos and characters are trademarks of Viacom International Inc. Fisher-Price, Inc., a subsidiary of Mattel, Inc., New York, New York 10010 U.S.A. PRINTED IN CHINA. Manufactured for Fisher-Price. ©2003, 2004 Mattel, Inc. All Rights Reserved. Fisher-Price and the Fisher-Price logo are U.S. trademarks of Mattel, Inc. Packaging and address should be retained for future reference.

Mattel Canada Inc., Mississauga, Ontario L5R 3W2. You may call us free at 1-800-655-6288. Mattel U.K. Ltd., Varwall Business Park, Maidenhead SL6 4UB. Helpline 01628500303. Mattel Australia Pty., Ltd., Richmond, Victoria, 3121. Consumer Advisory Service - 1300 135 312. Mattel East Asia Ltd, Room 1106, South Tower, World Finance Centre, Harbour City, Tsimshatsui, HK, China. Diimport & Diedarkan Oleh: Mattel SEA Ptd Ltd (993532-P) Lot 13.5, 13th Floor, Menara Lien Hoe, Persiaran Tropicana Golf Country Resort, 47410 PJ. Tel:03-78803817, Fax:03-78803857. Mattel, Inc., El Segundo, CA 90245 U.S.A. Consumer Affairs 1 (800) 524-Toys.



ITEM NO. H2622

H2622-0920