

PERFORMANCE TRACK PACK

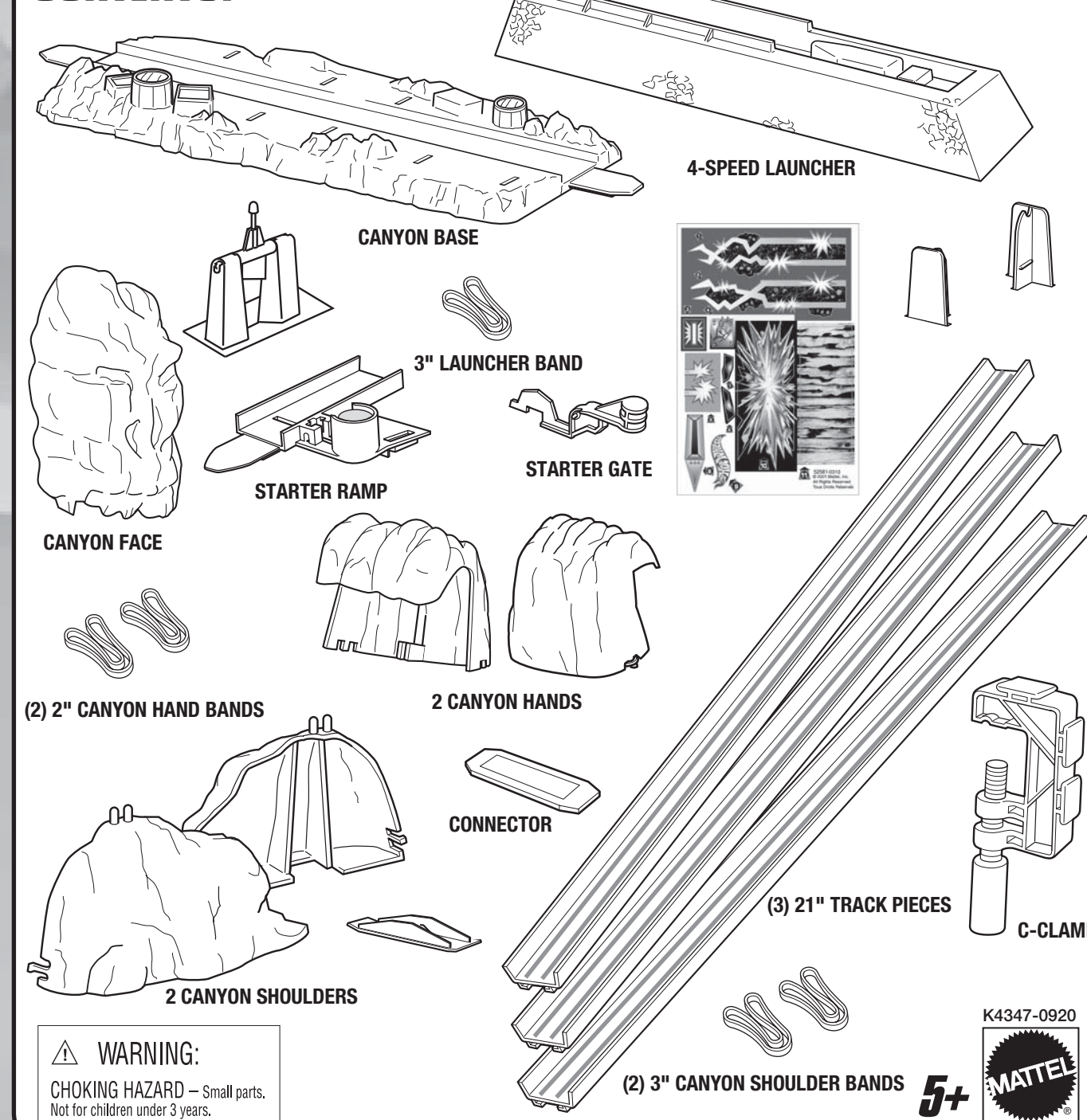


INSTRUCTIONS

Keep these instructions for future reference as they contain important information.

CRASH CANYON™ SET

CONTENTS:



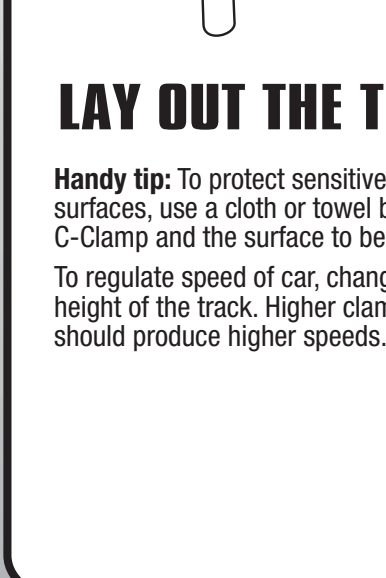
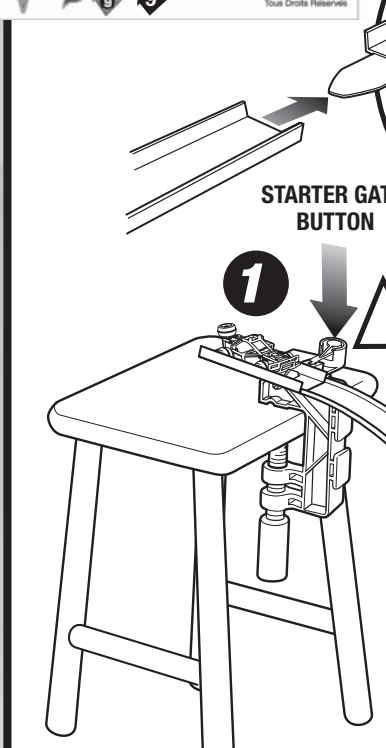
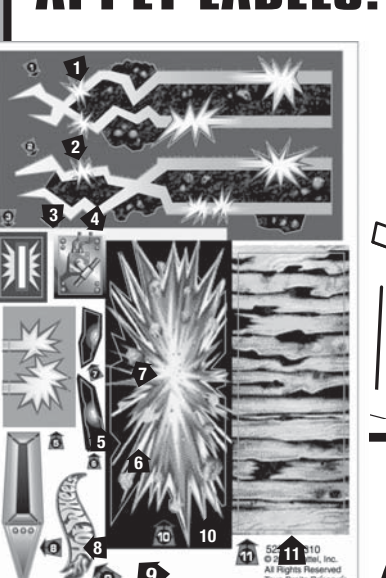
WARNING:
CHOKING HAZARD - Small parts.
Not for children under 3 years.

© 2007 Mattel, Inc. All Rights Reserved.



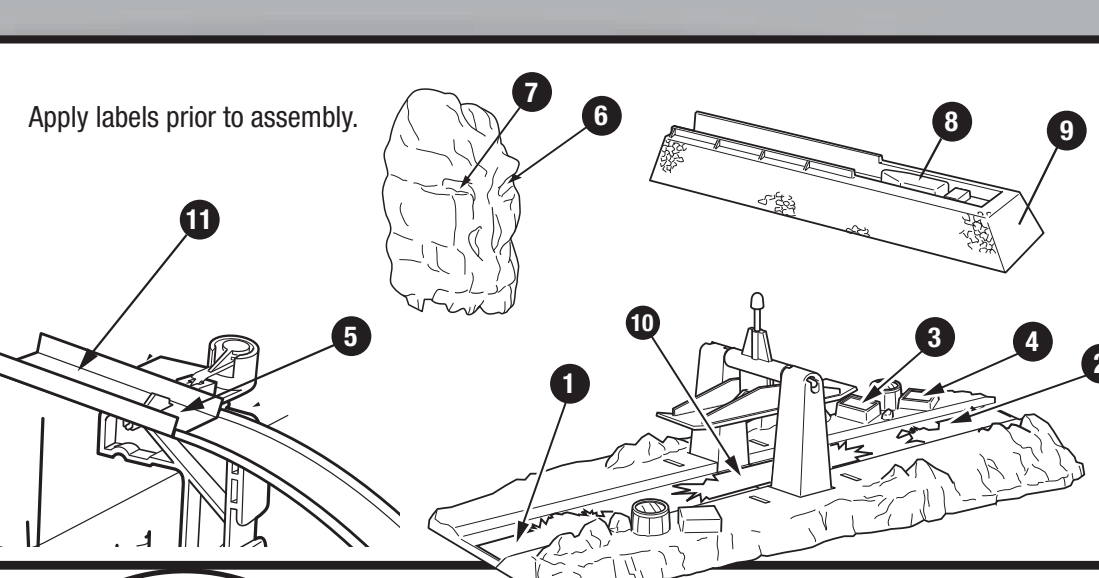
APPLY LABELS:

Apply labels prior to assembly.

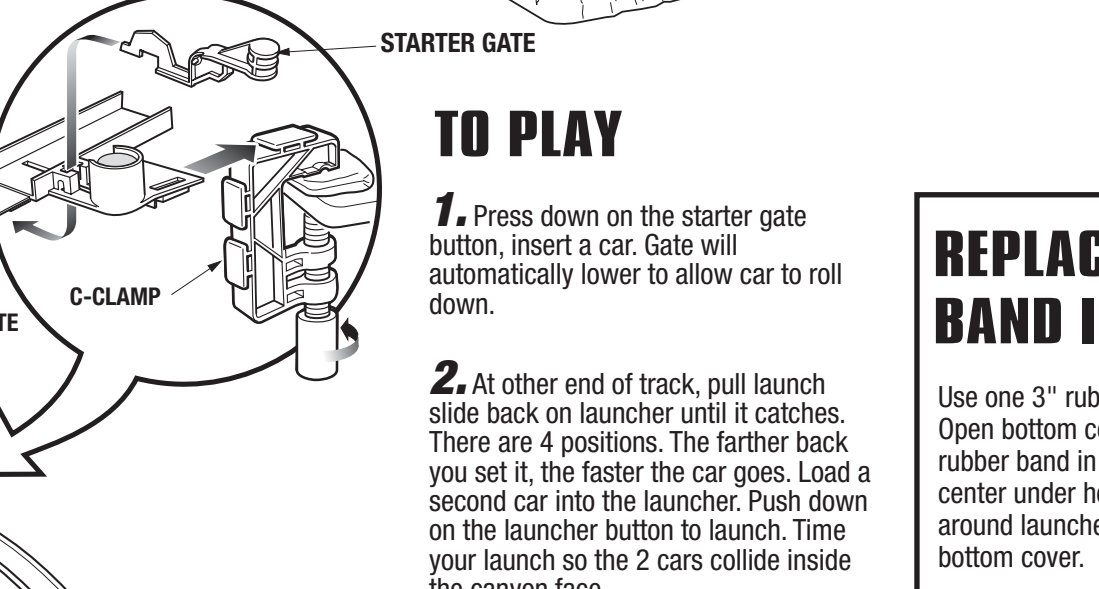


Crash inside the canyon and see it EXPLODE!

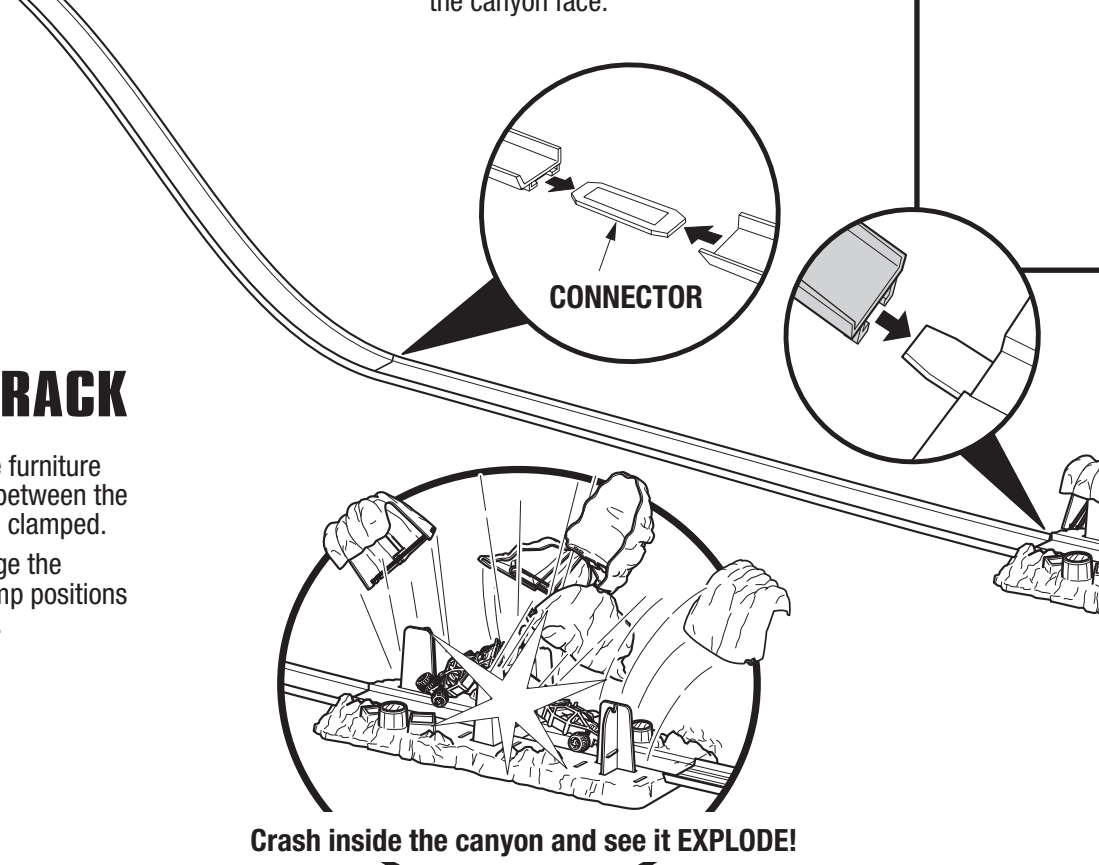
ASSEMBLE BASE



TO PLAY



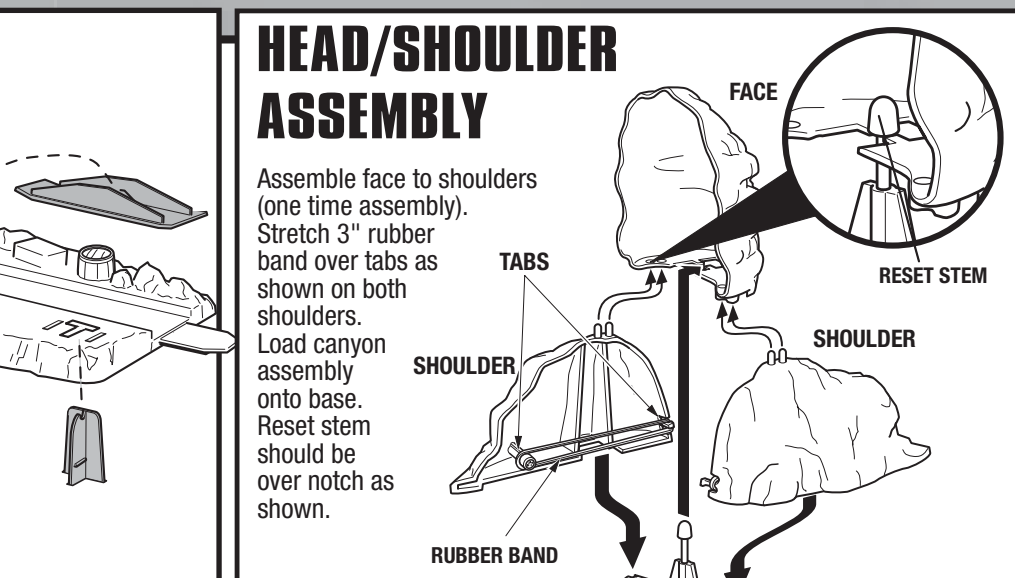
REPLACE RUBBER BAND IN LAUNCHERS:



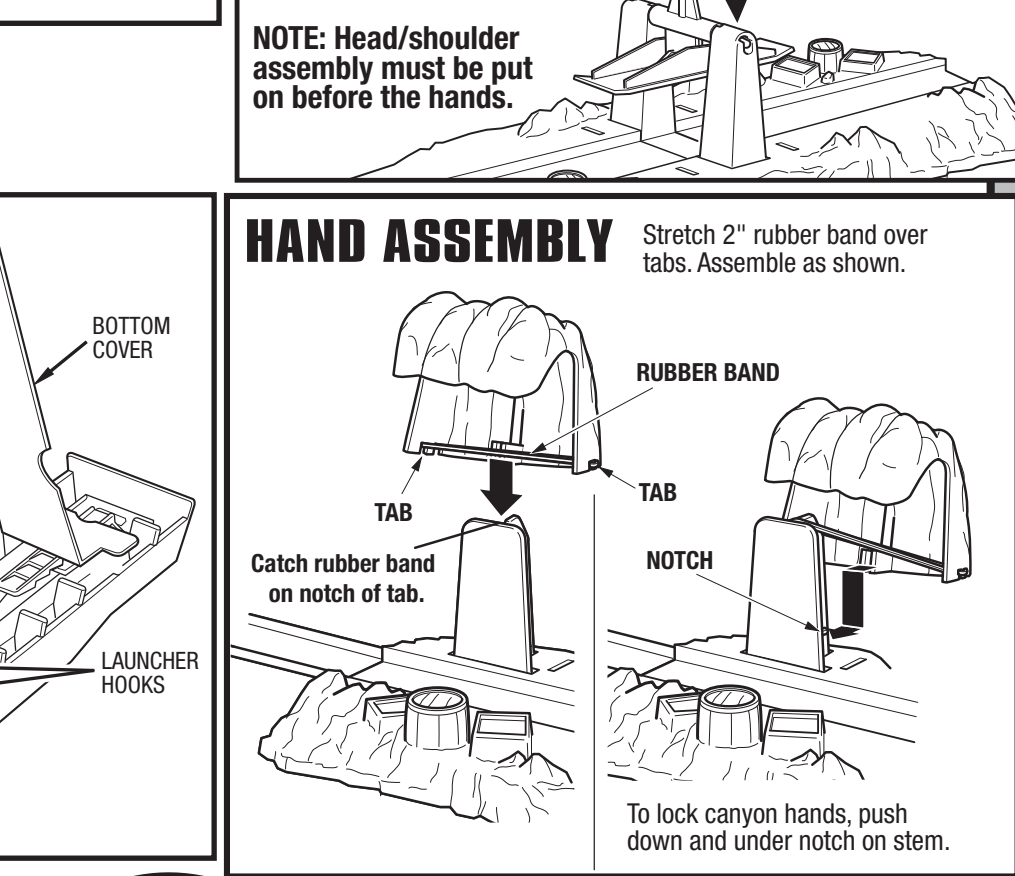
HAND ASSEMBLY



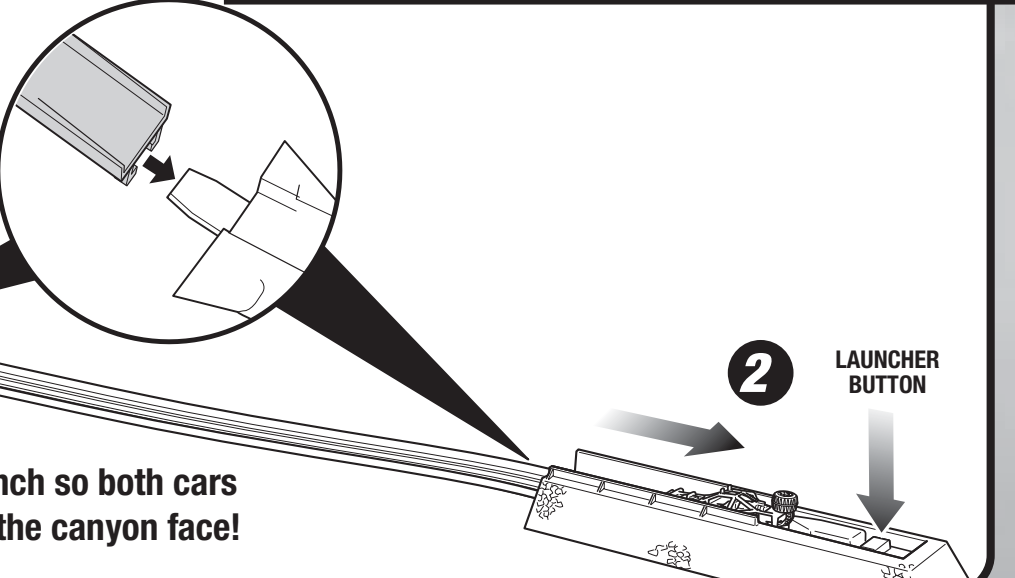
HEAD/SHOULDER ASSEMBLY



TO MAKE LOOPS, fit (2) 12" TRACK SECTIONS with loop connector onto each loop base as shown.

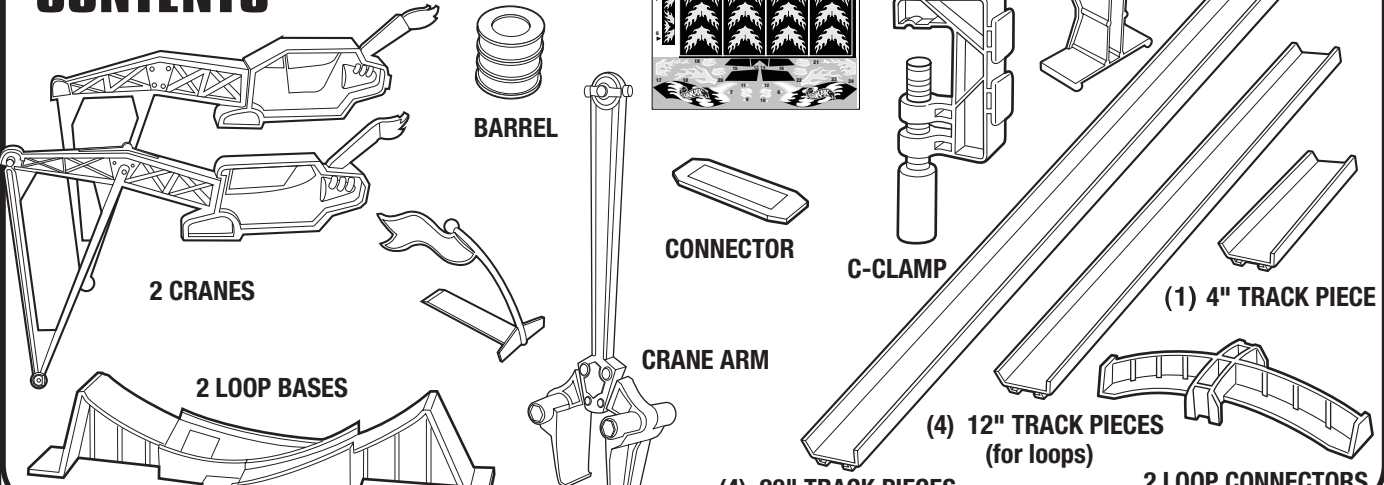


ATTACH CRANES

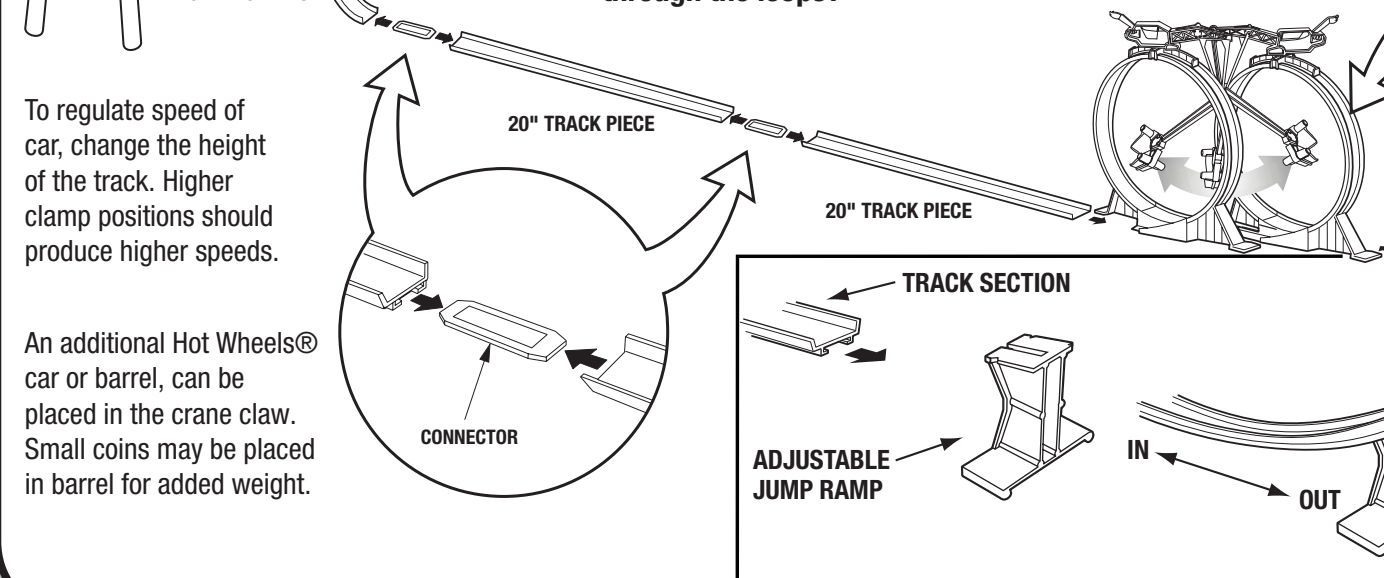
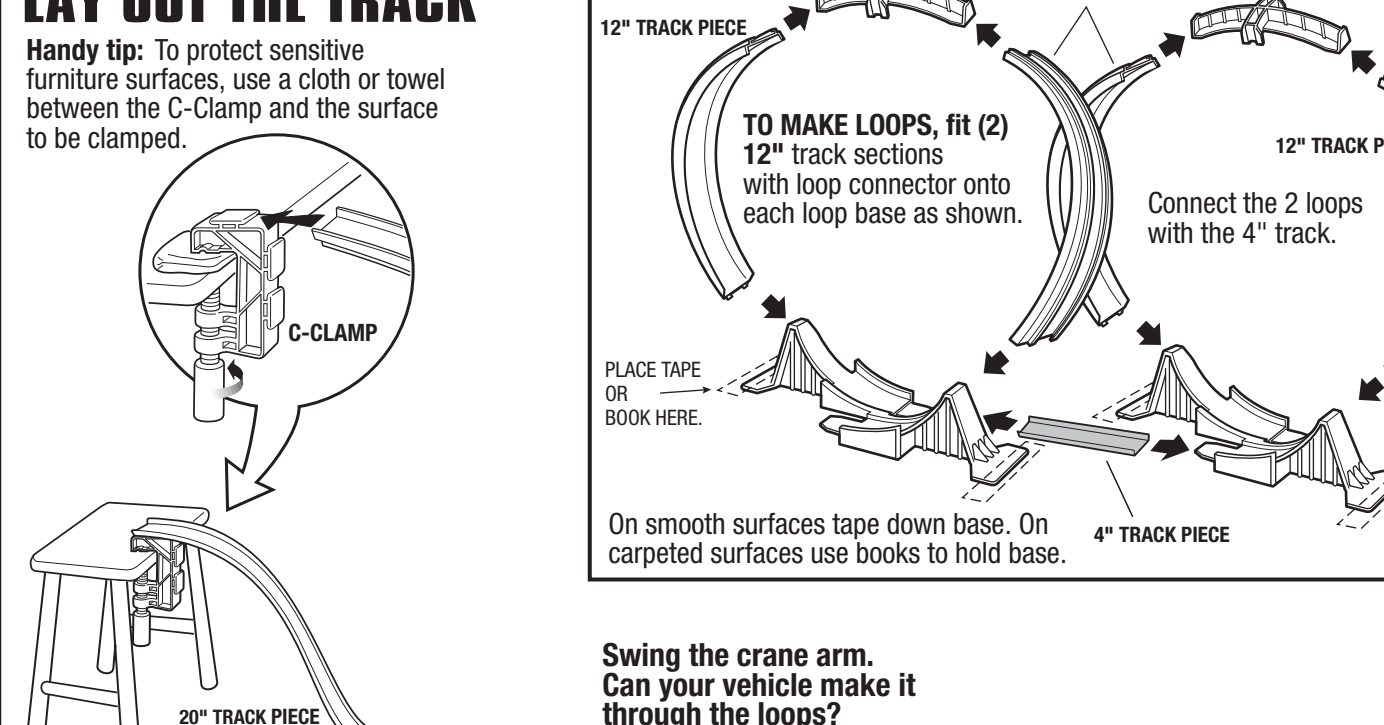


WRECK 'N' ROLL™ STUNT SET

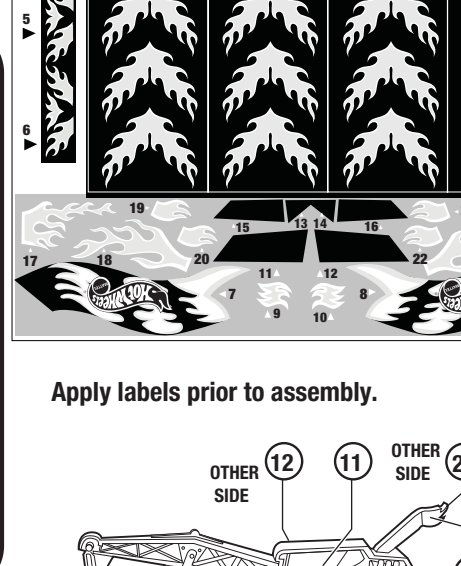
CONTENTS



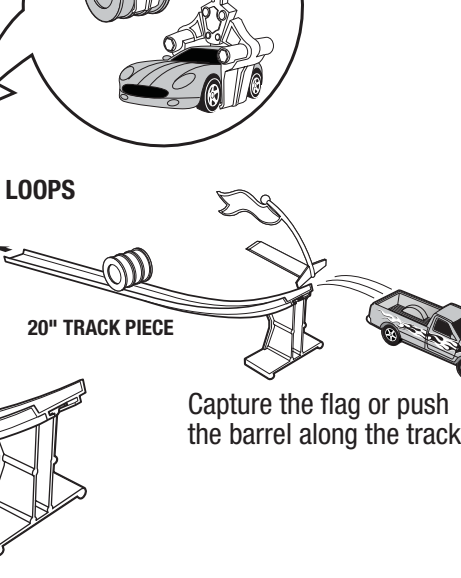
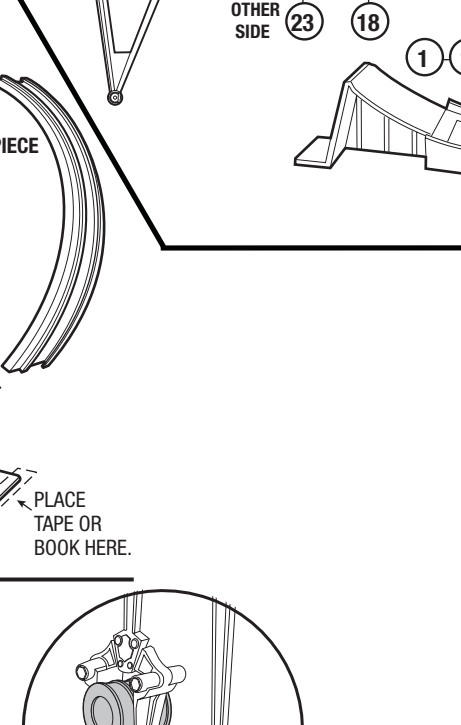
LAY OUT THE TRACK



APPLY LABELS

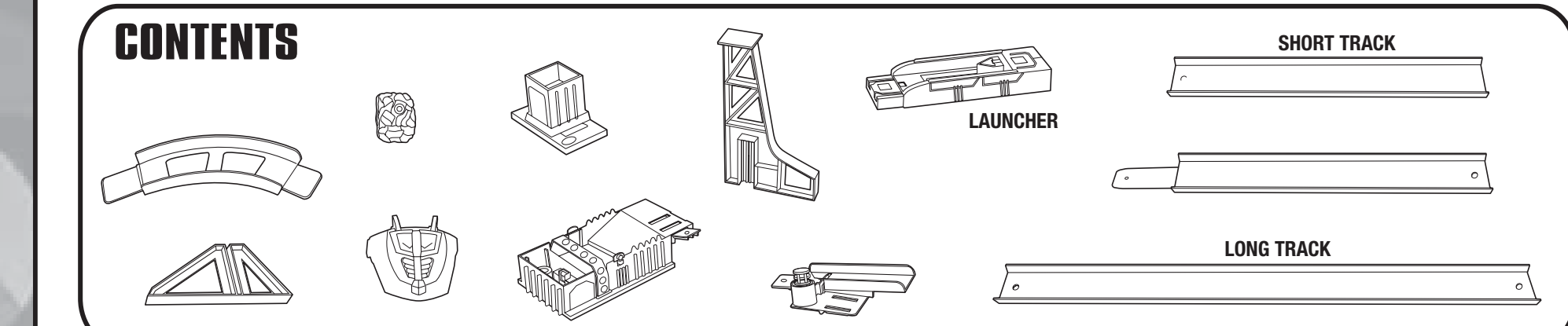


TO PLAY

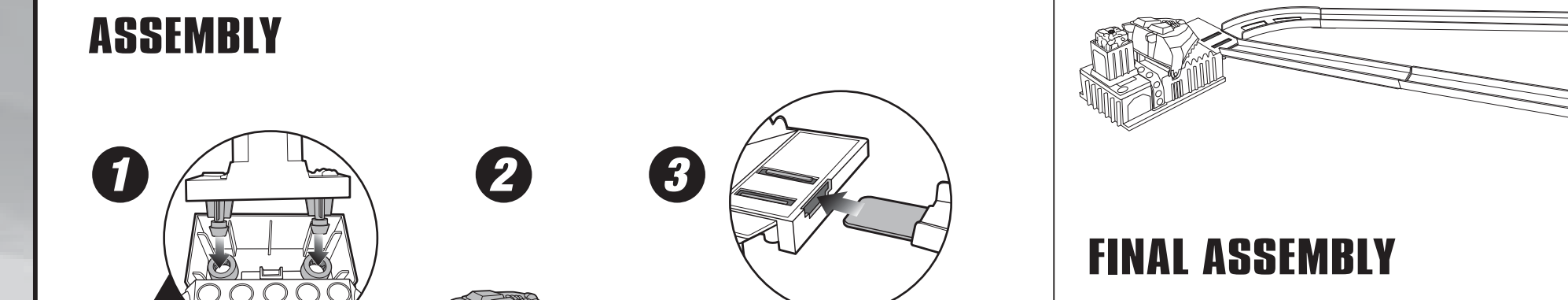


JUNKYARD DOG® ATTACK TRACK® SET

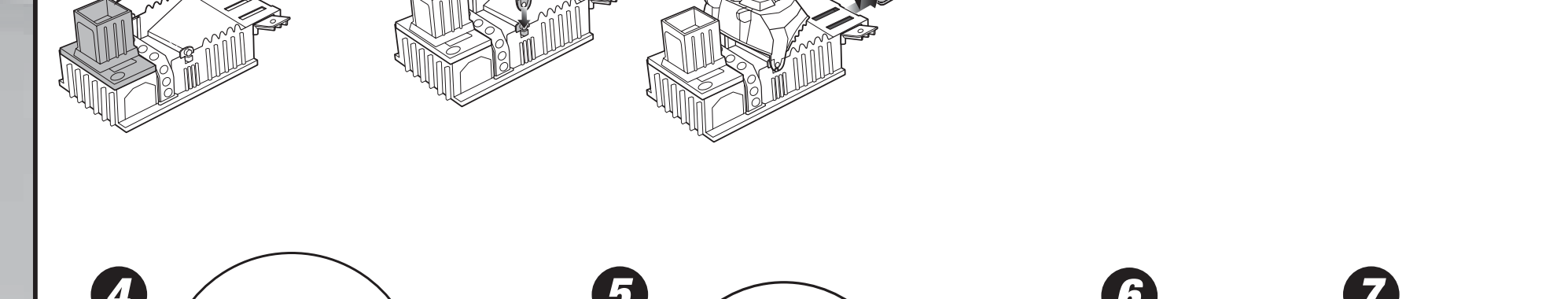
CONTENTS



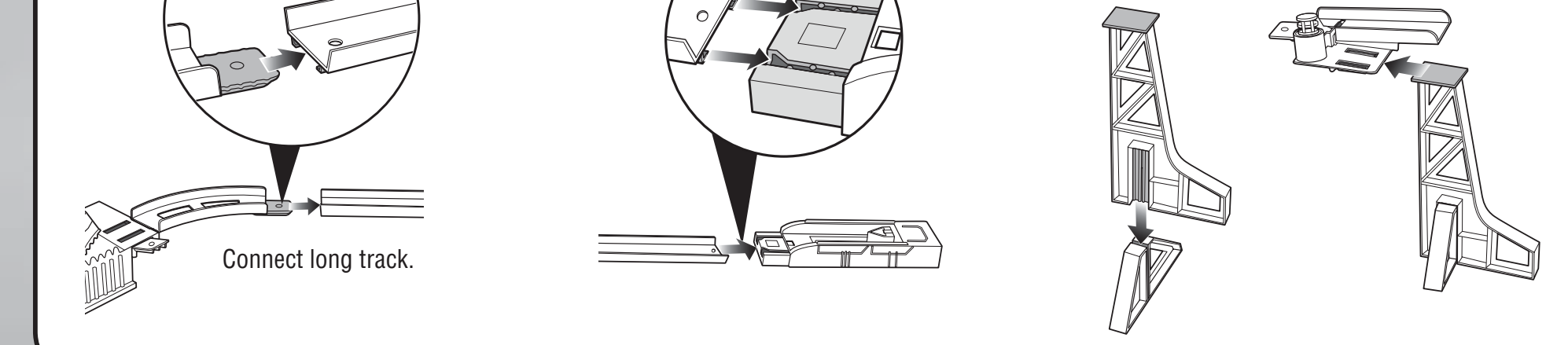
ASSEMBLY



FINAL ASSEMBLY

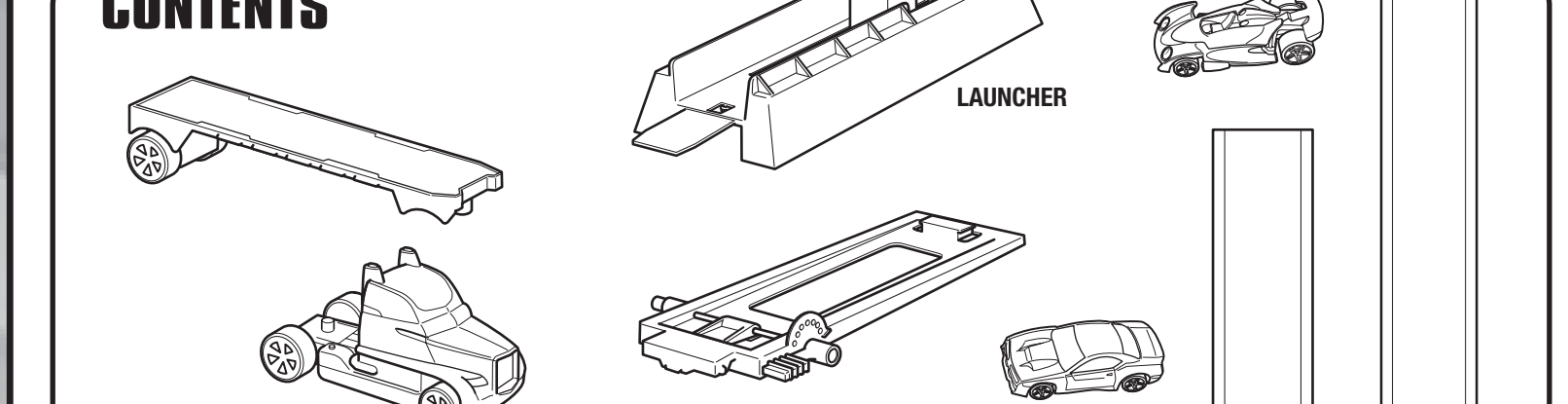


TO PLAY

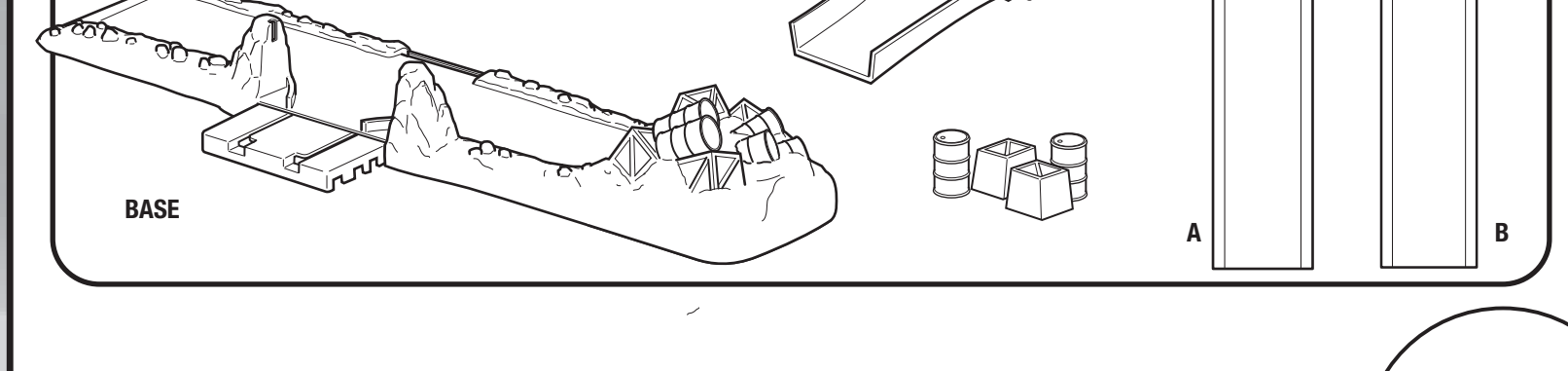


CRASHIN' TRANSPORT® SET

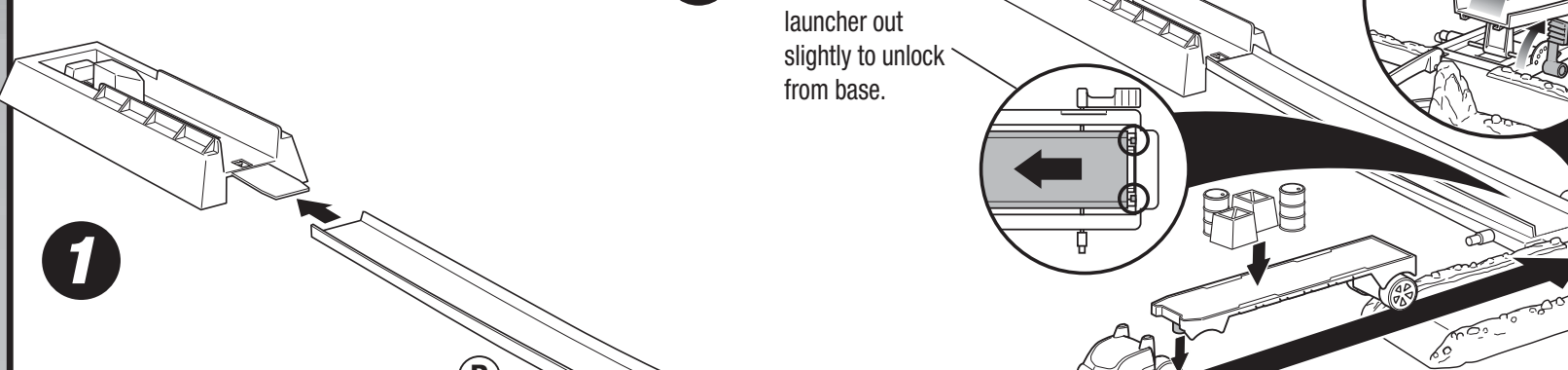
CONTENTS



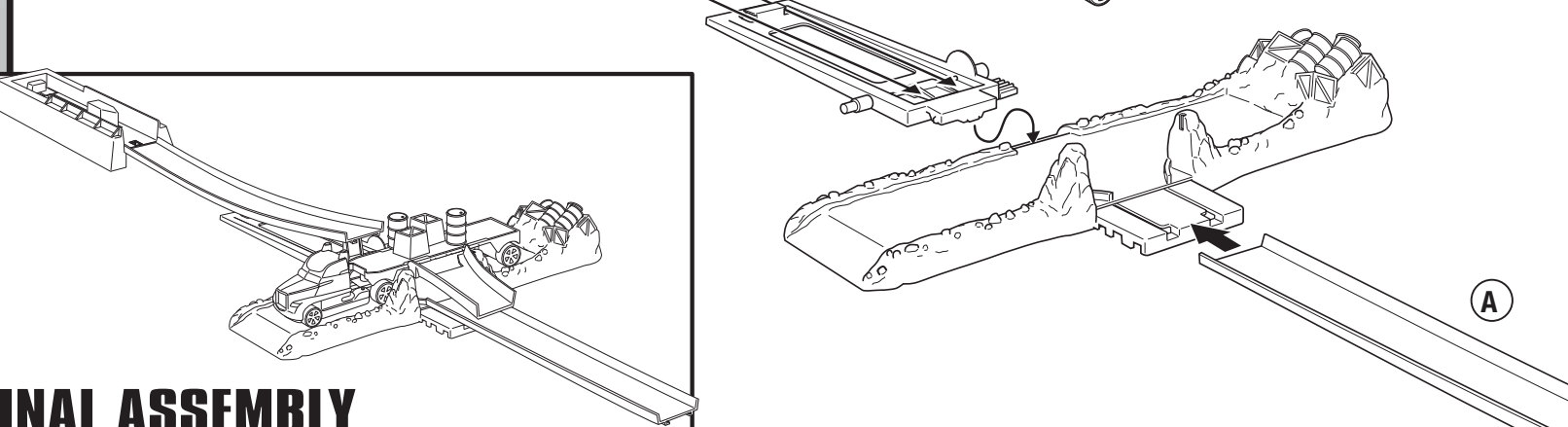
ASSEMBLY



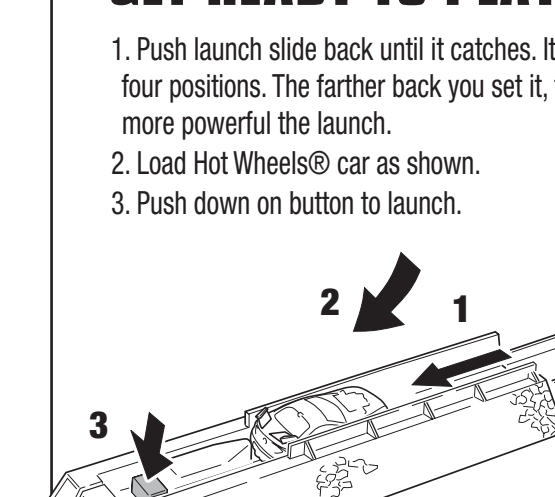
FINAL ASSEMBLY



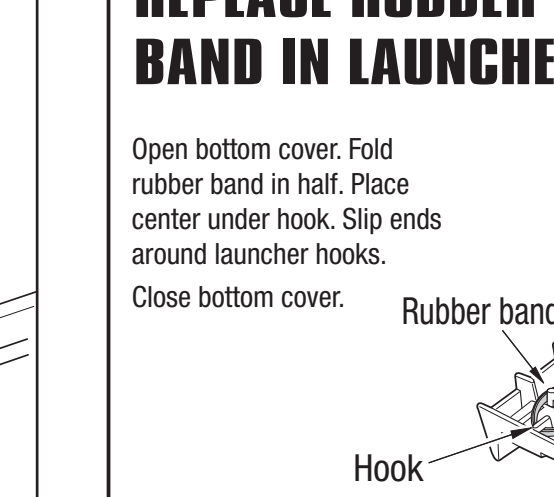
TO PLAY



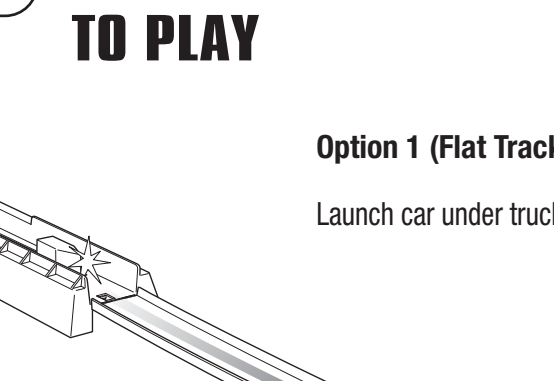
GET READY TO PLAY



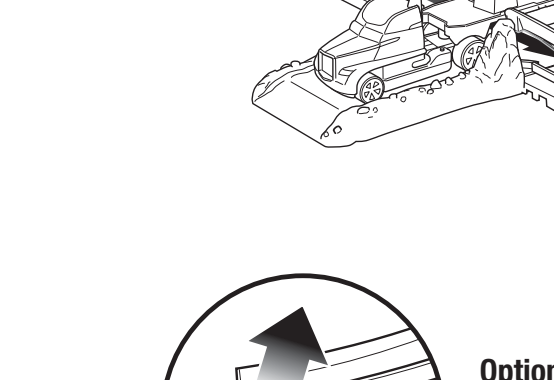
REPLACE RUBBER BAND IN LAUNCHER:



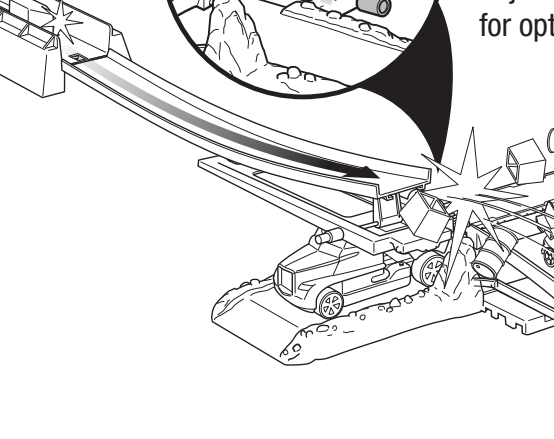
TO PLAY



OPTION 1 (Flat Track)



OPTION 2 (Jump Track)



INSTRUCTION SHEET	
SPECIFICATIONS	
Set No.	Performance Track Pack
Part No.	K4347-0020
Year	2007
Country	USA
Product	Hot Wheels
Material	Plastic
Color	White/Black
Weight	0.50
Volume	0.00