

Fisher-Price®

L3480

Computer Learning System

Parent's Guide

Please keep this guide for future reference, as it contains important information.

Adult assembly is required.

Tool required for assembly:
Slotted screwdriver
(not included).



Laugh,
Smile &
Learn

www.fisher-price.com

Table of Contents

3 Grow-With-Me Levels of Learning!	3
Message to Parents	4
Your Computer Learning System	5
Minimum System Requirements	6
Tips for Setup and Use	7
Installing/Uninstalling Software	8
Assembling the keytopper to Your Keyboard	9
Removing the keytopper from Your Keyboard	19
Let's Learn Together	20
Level 1	22
Level 2	24
Level 3	26
Customer Support	28

3 Grow-With-Me Levels of Learning!

Our specially-developed, infant-appropriate software offers three levels of play for growing baby. Tapping on the keytopper brings the screen to life with exciting animation, music, sing-along songs, sounds, and lots of learning activities. What a great way for you and baby to play and learn — together!

9M+ Level 1

Baby bats keys for fun sounds, and surprise animations!

18M+ Level 2

Older babies discover letters, shapes, counting and peek-a-boo fun!

24M+ Level 3

Toddlers learn and explore by touching specific keys for more advanced interaction.

Message to Parents

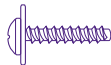
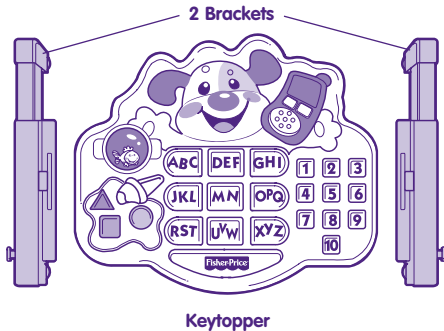
Laugh, Smile & Learn™ Computer Learning System is designed to be a supervised activity. Under proper supervision, the keytopper and software will provide a safe and enjoyable shared experience for you and your child. Do not leave your infant or toddler unattended in a chair with access to the cords and accessories that are associated with a computer.



CAUTION

To prevent strangulation, keep computer cables away from children.

Your Computer Learning System



#4 x 1/2" Screws - 2
Shown Actual Size

⚠ CAUTION

This product contains small parts in its unassembled state. Adult assembly is required.

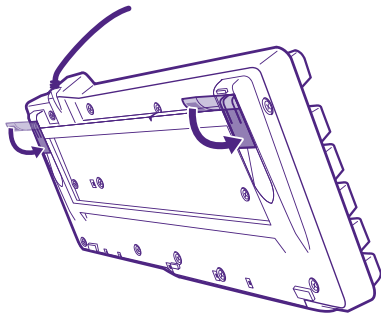
Minimum System Requirements

- **Operating System:** Windows 2000, Windows XP and Windows Vista™
- Processor: 750MHz
- Memory: 256MB RAM
- Hard Drive space: 250MB available
- Internet connection - optional for automatic software updates

Note: *This software is only compatible with English keyboards.*

Tips for Setup and Use

1. Make sure your computer keyboard is completely flat before attaching the keytopper. Lower the tabs on the back of your keyboard if necessary.
2. Do not use the keytopper with your computer keyboard while it is in a tray or drawer. Be sure to place your computer keyboard on a large, flat surface before assembling the keytopper.
3. Make sure the "Caps Lock" button on your computer keyboard is off.
4. Install the software before assembling the keytopper.
5. The keytopper fits over most standard computer keyboards (but may not fit some unique styles or ergonomic designs).



Installing Software

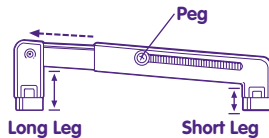
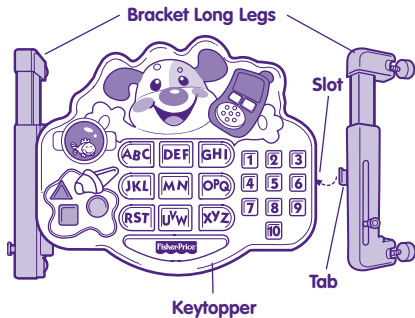
In order to run the program, you will first need to run the installer to setup the necessary program files on your hard drive.

1. Insert the CD-ROM disc into the CD-ROM drive in your computer.
2. Click the OK button.
3. Follow the installation instructions.

Uninstalling Software

1. Click the Start button and select Programs.
2. Navigate to Fisher-Price® then to the Laugh, Smile & Learn™ program.
3. Choose "Uninstall."

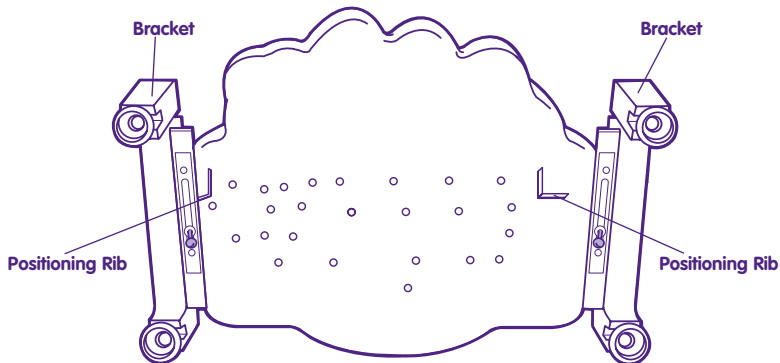
Assembling the Keytopper to Your Keyboard



Note the long leg and short leg on each bracket.

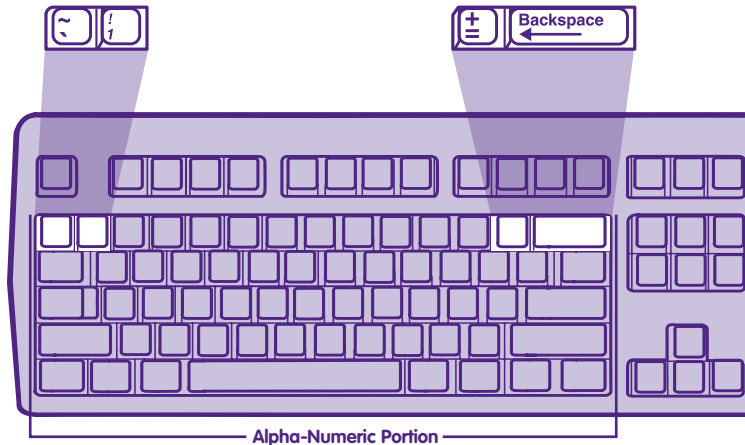
- Pull the peg out on each bracket and extend the bracket to its widest position.
- Position the brackets so that the long leg on each is toward the top of the keytopper and the peg on each is facing out.
- Position one of the brackets at a 45° angle to the keytopper. Insert and **"snap"** the bracket tab into the slot on the side of the keytopper.
- Repeat this procedure to assemble the other bracket to the keytopper.

Assembling the Keytopper to Your Keyboard



- While holding the brackets in place, carefully turn the keytopper over.
- Insert the screws through the slot in each bracket and into the keytopper. **Loosely tighten the screws with a slotted head screwdriver. Do not fully tighten the screws.**
- Note the locations of the positioning ribs on the underside of the keytopper.

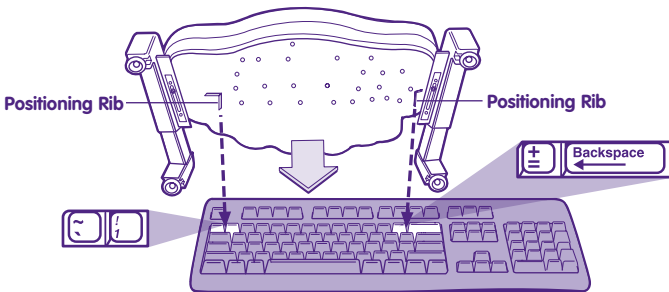
Assembling the Keytopper to Your Keyboard



- Locate the alpha-numeric portion of your computer keyboard.
- Locate the keys highlighted in the illustration above. The keytopper positioning ribs will fit between these keys.

Note: For proper function, be sure the "Caps Lock" button on your computer keyboard is off.

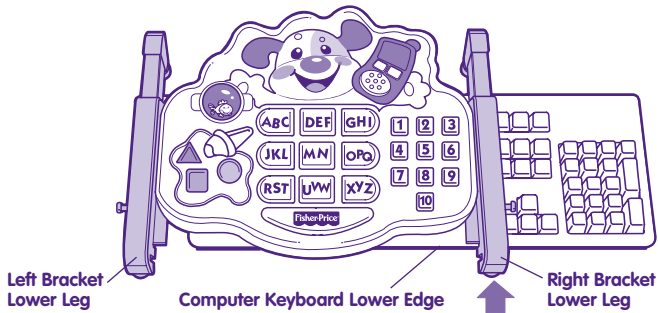
Assembling the Keytopper to Your Keyboard



- With the keytopper face up, position the keytopper over the alpha-numeric portion of your computer keyboard.
- Fit the positioning tabs between the keys shown in the illustration above.

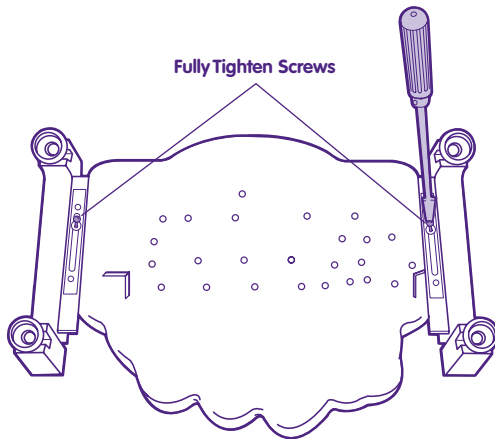
Hint: If you have properly positioned the keytopper over your computer keyboard, the keytopper cannot be moved from side or up or down.

Assembling the Keytopper to Your Keyboard



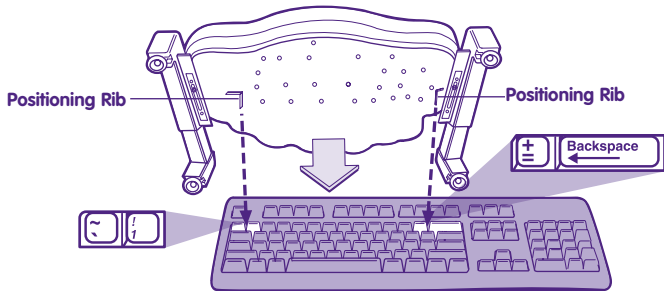
- Position the **right bracket** lower leg to the lower edge of your computer keyboard.
- Hint:** If you have properly positioned the keytopper over your computer keyboard, the left bracket lower leg will not contact the computer keyboard bottom edge.
- Position the left bracket lower leg so that it aligns with the right bracket lower leg.

Assembling the Keytopper to Your Keyboard



- **While keeping the brackets in position**, carefully remove the keytopper from your computer keyboard.
- Turn the keytopper over and fully tighten the screws in the brackets with a slotted screwdriver. Do not over-tighten.

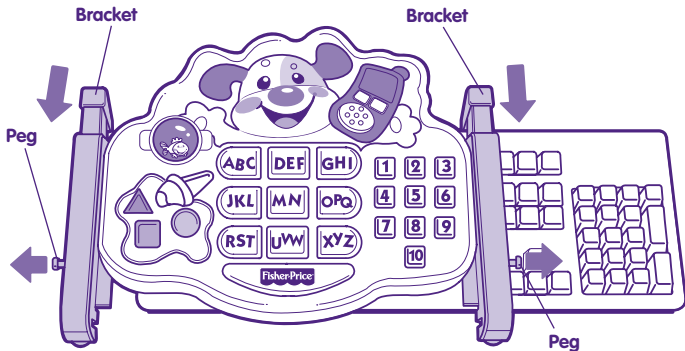
Assembling the Keytopper to Your Keyboard



- Replace the keytopper over the computer keyboard, Make sure the positioning tabs fit between the keys shown in the illustration above.

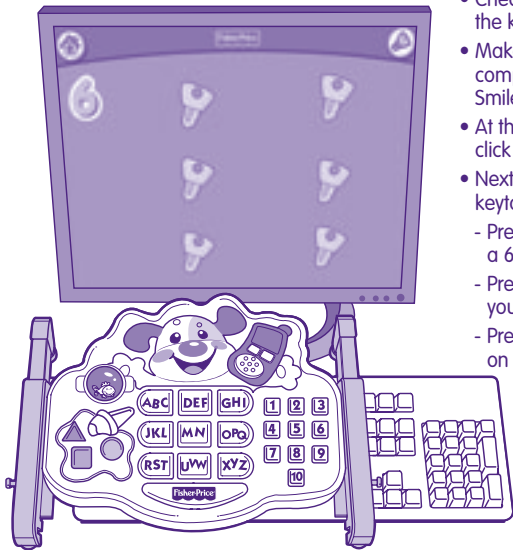
Hint: If you have properly positioned the keytopper over your computer keyboard, the keytopper cannot be moved from side or up or down.

Assembling the Keytopper to Your Keyboard



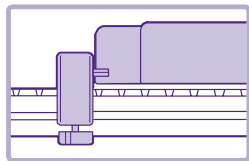
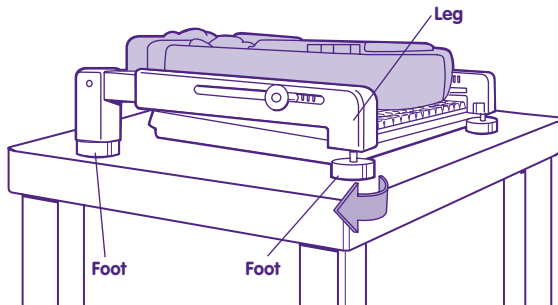
- Pull the peg out on each bracket and slide the top legs until they contact the upper edge of your computer keyboard.

Assembling the Keytopper to Your Keyboard



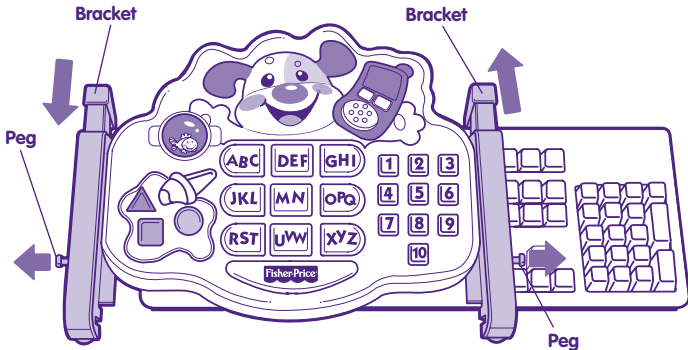
- Check to be sure you have properly positioned the keytopper over your computer keyboard.
- Make sure your computer is on. Using your computer keyboard mouse, click the Laugh, Smile & Learn™ software icon.
- At the home page, click "Level 2" and then click Start.
- Next, you will press three buttons on the keytopper to be sure you see correct responses.
 - Press the number 6 button (you should see a 6 on your computer screen).
 - Press the phone (you should see a phone on your computer screen).
 - Press a shape button (you should see a shape on your computer screen).
- If you see and hear correct responses, you have correctly positioned the keytopper over your computer keyboard (go to page 20). If not, please go to the next page for additional instructions.

Assembling the Keytopper to Your Keyboard



- If the keytopper isn't properly positioned, you may need to: raise or lower the keytopper (see instructions on this page); or reattach the keytopper over the keyboard (see instructions beginning on page 9).
 - To adjust the height of the keytopper over the keyboard, turn the feet on each bracket to raise or lower the keytopper.
- Hint:** Make sure each foot is contacting the flat surface.
- Check again for correct responses on your computer screen when pressing keytopper buttons. Refer to page 17.

Removing the Keytopper from Your Keyboard



- Pull the peg out and slide it to enlarge the bracket to its widest position.
- Remove the keytopper from your computer keyboard.

IMPORTANT!

When placing the keytopper over your computer keyboard, remember to re-adjust the keytopper top legs. The keytopper top legs should contact the upper edge of your computer keyboard.

Let's Learn Together



Hint: Use your computer mouse to make selections from the Home screen. Selections on the Home screen cannot be made using the keytopper.

Let's Learn Together

Auto Play Tips - Click to see play tips at the top of each screen.

Background Music - Click for a delightful selection of children's music.

Web Connection - Click to automatically launch your internet software and visit our Fisher-Price® website.*

Parent Content Guide - Click to read our Parent Content Guide. The Parent Content Guide includes information about the software and gives you some general guidelines on ways to use the software now and as your baby grows.

Level Selection - Click the desired level of play.

Quit - Click to exit this program.

Start - Click to begin play on the desired level.

About - Click to view program version information.

*If you do not have internet service, you will not be able to access our Fisher-Price® website.

Level 1

Home





Tips

Teaches

- Colors
- Shapes
- Greetings
- Cause and Effect

Level 1

- Let baby press any button on the keytopper for animated scenes, fun sounds and music! Baby is rewarded with graphic surprises and sound effects with each key pressed!
- Using your computer keyboard mouse, click the  for tips.
- Using your computer keyboard mouse, click the  house to return to the home screen.

Level 2

Home





Tips

Teaches

- Letters
- Words
- Numbers
- Counting

Level 2

- Let baby press any button on the keytopper for a corresponding image and sound!
- Using your computer keyboard mouse, click the  for tips.
- Using your computer keyboard mouse, click the  to return to the home screen.

Level 3



House



Farm



Yard

Teaches

- Numbers and Counting
- Word Association
- Sentences
- Animals
- Matching

Level 3

- Visit the yard, the farm or the house! Simply press the telephone to choose the location. Images and sounds prompt baby to press corresponding letters and numbers!
- Using your computer keyboard mouse, click the  for tips.
- Using your computer keyboard mouse, click the  to return to the home screen.



CONSUMER ASSISTANCE

Call toll free: 1-800-432-5437 (US & Canada only)
M-F 9AM to 7PM / SAT 11AM to 5PM (EST)

 service.fisher-price.com

Write to us at: Fisher-Price® Consumer Relations,
636 Girard Avenue, East Aurora, New York 14052.

Hearing-impaired consumers using TTY/TDD equipment,
please call 1-800-382-7470.

For countries outside the United States:

CANADA: Questions? 1-800-432-5437. Mattel Canada Inc., 6155 Freemont Blvd., Mississauga, Ontario L5R 3W2;
www.service.mattel.com.

GREAT BRITAIN: Mattel UK Ltd, Vanwall Business Park, Maidenhead SL6 4UB. Helpline: 01628 500303.
www.service.mattel.com/uk.

AUSTRALIA: Mattel Australia Pty. Ltd., 658 Church Street, Locked Bag #870, Richmond, Victoria 3121 Australia.
Consumer Advisory Service 1300 135 312.

NEW ZEALAND: 16-18 William Pickering Drive, Albany 1331, Auckland.

ASIA: Mattel East Asia Ltd, Room 1106, South Tower, World Finance Centre, Harbour City, Tsimshatsui, HK, China.

Windows is a registered trademark of Microsoft Corporation in the United States and other countries. Windows Vista is either a registered trademark or trademark of Microsoft Corporation in the United States and/or other countries.

Fisher-Price, Inc., a subsidiary of Mattel, Inc., East Aurora, NY 14052 U.S.A.

©2007 Mattel, Inc. All Rights Reserved. ® and ™ designate U.S. trademarks of Mattel, Inc.

PRINTED IN CHINA
L3480a-0920