

SPECIAL BARBIE GIRLS™ CODE

Special Online Pet & 100 B Bucks™

- To redeem:
1. Connect your Barbie Girl™ to your computer.
 2. Go to BarbieGirls.com and log in using your screen name and password.
 3. Click  and enter code below!

(CODE HERE)

BARBIE GIRLS™ CUSTOMER SUPPORT

For questions about the Barbie Girl™ device and BarbieGirls.com, call

US and Canada: service.mattel.com or call **877 3BARBIE** (877-322-7243),
M-F 9am - 7pm, Sat 11am - 5pm, Eastern Time.

UK: service.mattel.com/uk or Call 01628 500303, M-F 9am - 5pm

Australia: 1300 135 312 or 1800 674 753 M-F 8am - 4:30pm, EST.

New Zealand: 0800 174 063 M-F 10am - 6:30pm, Australia EST.

Mattel Canada Inc., Mississauga, Ontario L5R 3W2. You may call us free at/ Composez sans frais le 1-800-524-8697.

Mattel U.K. Ltd., Vanwall Business Park, Maidenhead SL6 4UB.

Mattel Australia Pty., Ltd., Richmond, Victoria. 3121. Consumer Advisory Service - 1300 135 312.

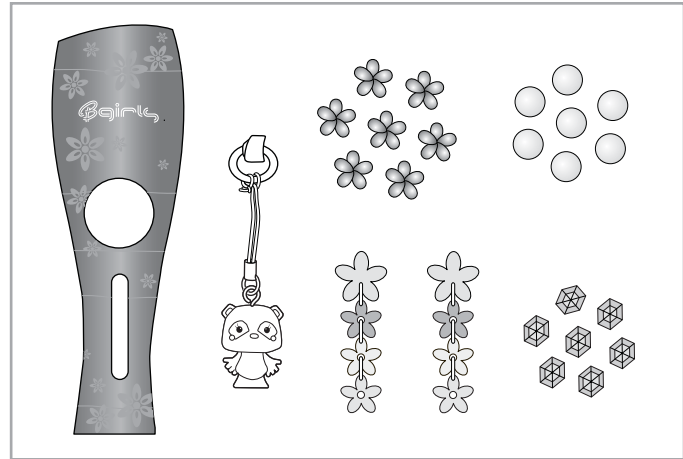
Mattel East Asia Ltd., Room 1106, South Tower, World Finance Centre, Harbour City, Tsimshatsui, HK, China.

Diiimport & Diedarkan Oleh: Mattel SEA Ptd Ltd.(993532-P) Lot 13.5, 13th Floor, Menara Lien Hoe, Persiaran Tropicana Golf Country Resort, 47410 PJ. Tel:03-78803817, Fax:03-78803867.

Mattel, Inc., 333 Continental Blvd., El Segundo, CA 90245 U.S.A. Consumer Relations 1 (800) 524-8697.

Barbie
girls

INSTRUCTIONS

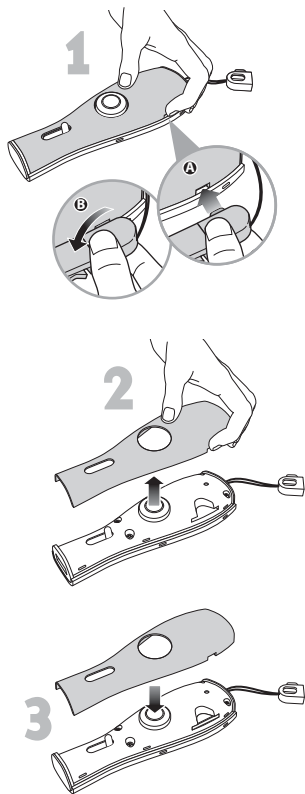


Contents: Please remove items from the package and compare to the contents shown here. If any items are missing, contact your local Mattel office. Fashions may vary. Keep these instructions for future reference as they contain important information.

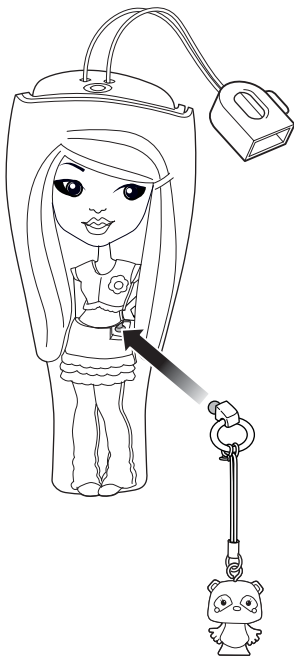
L4850-0920



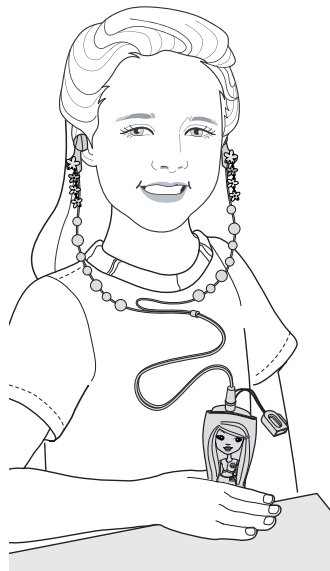
Remove and Replace Back Plate



Add Pet Accessory to Your Barbie Girl™

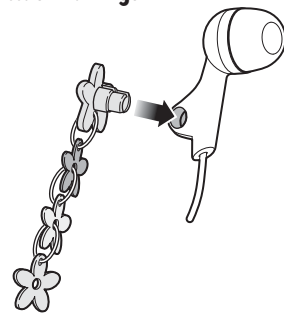


Decorate your Barbie Girls™ earphones* with earrings and beads.



*Earphones are sold separately with the Barbie Girl™ device. Barbie Girls™ earrings should only be used on Barbie Girls™ earphones.

Attach Earrings



Attach Beads

