

This device complies with Part 15 of the FCC rules

Operation is subject to the following two conditions:

- (1) This device may not cause harmful interference, and
 - (2) this device must accept any interference received, including interference that may cause undesired operation.
- This equipment has been tested and found to comply with the limits for a Class B digital device, pursuant to Part 15 of the FCC rules. These limits are designed to provide reasonable protection against harmful interference in a residential installation. This equipment generates uses and can radiate radio frequency energy and, if not installed and used in accordance with the instructions, may cause harmful interference to radio communications. However, there is no guarantee that interference will not occur in a particular installation. If this equipment does cause harmful interference to radio or television reception, which can be determined by turning the equipment off and on, the user is encouraged to try to correct the interference by one or more of the following measures:
 - Reorient or relocate the receiving antenna. Increase the separation between the equipment and receiver.
 - Connect the equipment into an outlet on a circuit different from that to which the receiver is connected.
 - Consult the dealer or an experienced radio/TV technician for help.

NOTE: Changes or modifications not expressly approved by the manufacturer responsible for compliance could void the user's authority to operate the equipment.



Protect the environment by not disposing of this product with household waste (2002/96/EC). Check your local authority for recycling advice and facilities. If unit malfunctions, check the battery installation. **BATTERIES SHOULD BE CHANGED WHEN SOUND DISTORTS OR LOCKING MECHANISM MALFUNCTIONS.**

Y2580-0920



CONSUMER INFORMATION

Need Assistance? Visit service.mattel.com or call 1-800-524-8697 (US and Canada only).

SERVICE.MATTEL.COM

©2012 Mattel. All Rights Reserved.

RADICA USA Ltd. Helpline 1-800-524-8697 or service.mattel.com.
 Mattel, Inc. 636 Girard Avenue, East Aurora, NY 14052, U.S.A. Consumer Relations 1-800-524-8697.
 Mattel Europa B.V., Gondel 1, 1186 MJ Amstelveen, Nederland.
 Mattel U.K. Ltd., Vanwall Business Park, Maidenhead SL6 4UB. Helpline 01628 500303.
 Mattel Australia Pty., Ltd., Richmond, Victoria. 3121. Consumer Advisory Service - 1300 135 312
 Mattel East Asia Ltd., Room 1106, South Tower, World Finance Centre, Harbour City, Tsimshatsui, HK, China.
 Diimport & Diedarkan Oleh: Mattel SEA Ptd Ltd. (993532-P) Lot 13.5, 13th Floor, Menara Lien Hoe, Persiaran Tropicana Golf Country Resort, 47410 PJ. Tel:03-78803817, Fax:03-78803867



Keepsake box by Password Journal

Ages 6+

INSTRUCTION MANUAL

Keep these instructions for future reference as they contain important information.

CONTENTS

- 1 Keepsake Box
- 6 Memory Keys
- Reusable Stickers

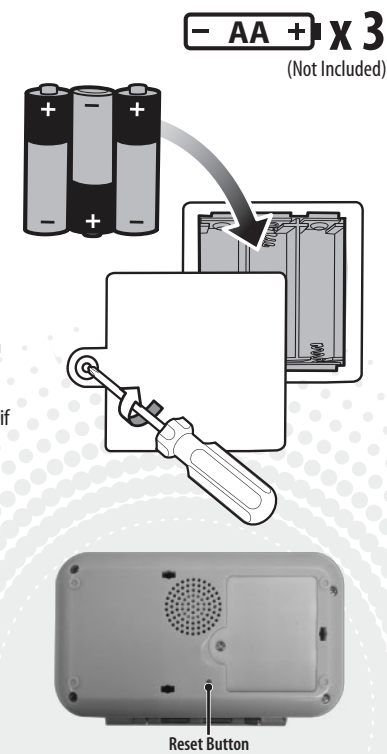


Please remove all components from the container and compare them to the contents list. If any items are missing, please call 1-800-524-8697. Outside the U.S., please consult the listing of your local Mattel offices at the end of these instructions.

BATTERY INFORMATION

- Requires 3 "AA" Alkaline batteries (not included).
- For longer life use only alkaline batteries.
- If unit malfunctions, check the battery installation.
- BATTERIES SHOULD BE CHANGED WHEN SOUND DISTORTS OR LOCKING MECHANISM MALFUNCTIONS.**

ADULT SUPERVISION RECOMMENDED WHEN CHANGING BATTERIES.

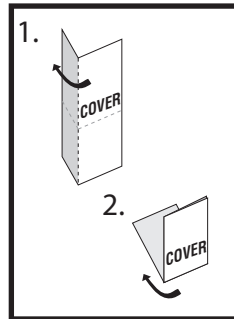


BATTERY SAFETY INFORMATION

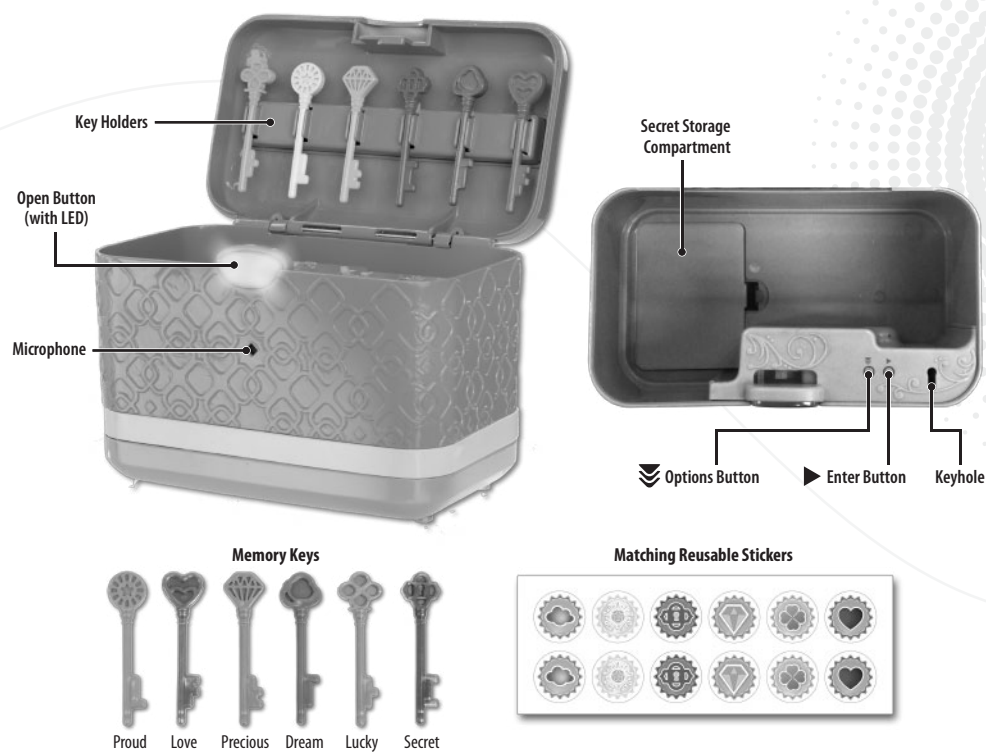
- In exceptional circumstances batteries may leak fluids that can cause a chemical burn injury or ruin your product. To avoid battery leakage:
- Non-rechargeable batteries are not to be recharged.
 - Rechargeable batteries are to be removed from the product before being charged (if designed to be removable).
 - Rechargeable batteries are only to be charged under adult supervision (if designed to be removable).
 - Do not mix alkaline, standard (carbon-zinc), or rechargeable (nickel-cadmium) batteries.
 - Do not mix old and new batteries.
 - Only batteries of the same or equivalent type as recommended are to be used.
 - Batteries are to be inserted with the correct polarity.
 - Exhausted batteries are to be removed from the product.
 - The supply terminals are not to be short-circuited.
 - Dispose of batteries safely.
 - Do not dispose of this product in a fire. The batteries inside may explode or leak.

INSTRUCTION SHEET SPECIFICATIONS

Toy: _____ KEEPSAKE BOX
 Toy No.: Y2580
 Part No.: 0920
 Trim Size: 11" W x 8.5" H
 Folded Size: 5.5" W x 4.25" H
 Type of Fold: Fold into half (W & H)
 # colors: One
 Colors: BLACK
 Paper Stock: White Offset
 Paper Weight: Pls. Ref. to PC
 EDM No.: _____

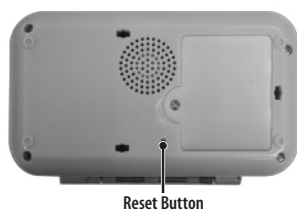


KEEPSAKE BOX FEATURES



BUTTON FUNCTIONS

- Open Button** – Press to open the Keepsake Box or to cancel what you are doing and return to the main menu.
- Options Button** – Scroll through the options to record, listen, erase or adjust security settings.
- Enter Button** – After choosing one of the options with the Options Button, press this button to enter your choice.
- Reset Button** – Press the reset button with the tip of a pen to reset your password or to open the Keepsake Box without a password.



RECORDING TIPS

Speak clearly into the Microphone when recording. For best results, record in a quiet environment free of background noise, and from a distance of about an arm's length away (1 foot/30 cm).

RECORDING YOUR PASSWORD

- Press the Options Button to scroll through the choices; when you hear the prompt for "Record" press the Enter Button.
- Now press the Options Button until you hear the prompt for "Password" and press the Enter Button again.
- When the LED is lit, the mic is recording; clearly say your chosen password.
- You will then be asked to repeat your password. Be sure to speak clearly and say your password the EXACT same way each time! If spoken correctly, your password will be accepted. If not, you will be asked to try again.
- HINT:** If the Keepsake Box does not accept your password after speaking it clearly and consistently, you may want to try adjusting your Security Setting to Low (See SECURITY SETTINGS).
- You may want to write down your password in case you forget it – but be sure to write it in a safe place or it won't be secret anymore!
- You can reset your password at any time by pressing the reset button with the tip of a pen.
- NOTE:** If you do not want to set a password, switch the Security Setting to OFF. The Open Button will then automatically open the Keepsake Box.

RECORDING YOUR MEMORIES

- To record a memory, select a Memory Key. Each key has a name that reflects its theme (ex. The Lucky Key is a clover, which is perfect for a memory about something lucky that happened to you!). You can choose the key by theme, or just whichever key you want.
- You can record up to 6 memories: 1 memory per key. So remember to choose one that does not already have a memory unless you want to record over the current memory.
- Open the Keepsake Box.
- Insert the key into the keyhole and turn it a ¼ turn clockwise. The Keepsake Box will say the name of the key and ask you to record your memory.
- You can also record a memory without a key. Press the Options Button until you hear the prompt for "Record" then press the Enter Button. Now press the Options Button again until you hear the name for the Memory Key you want (ex. Lucky) and then press the Enter Button.
- When the LED is lit, record your memory.
- There are reusable stickers that correspond to the keys; use a matching sticker to label a keepsake. Now you'll be able to play back the memory of your keepsake anytime you want!



PLAY BACK YOUR MEMORIES

- The Keepsake Box must be open.
- Insert a key into the keyhole and turn it a ¼ turn clockwise. If there is a memory recorded, the Memory Key name and the memory will play back instantly.
- You can also play back a memory without a key. Press the Options Button until you hear the prompt for "Listen" then press the Enter Button. Now press the Options Button again until you hear the name for the Memory Key you want (ex. Lucky) and then press the Enter Button.

ERASE YOUR MEMORIES

- The Keepsake Box must be open.
- Insert a key into the keyhole and turn it a ¼ turn clockwise. After you hear the memory playback, press the Options Button until you hear "Erase" and then press the Enter Button.
- To erase a memory without a key, press the Options Button until you hear the prompt for "Erase" then press the Enter Button. Now press the Options Button again until you hear the name for the Memory Key you want (ex. Lucky) and then press the Enter Button.

SECURITY SETTINGS

You can adjust the Security Settings to suit the amount of protection you want. Press the Options Button until you hear the prompt for "Security" and then press the Enter button. Then use the Options Button again to scroll through the levels of security and press the Enter Button to confirm your choice:

High: On the High setting, you will need to speak your password more clearly and precisely in order to release the lock. This ensures that no one but you will be able to duplicate your password (a great way to keep out nosy intruders!). On this setting, be sure to say your password the EXACT same way each time (be consistent).

Low: On the Low setting, there is a lower level of protection so you will be able to open the Keepsake Box even if you aren't being as consistent with the way you say your password. It is also a good level to try if you are having difficulty opening it, since you do not have to be as exact. But beware! A snoop who has memorized your password may be able to use it to open your Keepsake Box.

Off: When your Keepsake Box is in the Off setting, it will open without a password; simply press the Open Button.

NOTE: The first time you use your Keepsake Box it will be set to Low security. You will need to adjust the setting if you want it on High or Off.

THE SECRET STORAGE COMPARTMENT

The Secret Storage Compartment is located inside the Keepsake Box at the bottom. Use it to stash pictures, jewelry, whatever you want to keep safe!

RESETTING YOUR KEEPSAKE BOX

From time to time, you may want to change your password (especially if you think someone else knows it!). Press the Reset Button with the tip of a pen to clear your current password. Then record a new one following the prompts. See "Recording Your Password."

TROUBLESHOOTING

- If you are having difficulty opening your KEEPSAKE BOX with your password, consider adjusting your SECURITY SETTING. See SECURITY SETTINGS.
- Sometimes, a build-up of static electricity (from carpets, etc.), or an environment with radio frequency interference, may cause the unit to malfunction. If you encounter any issues, try resetting your password by pressing the Reset Button.