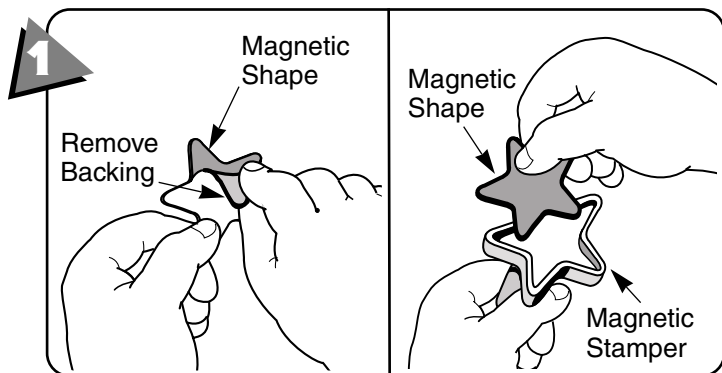


Fisher-Price®

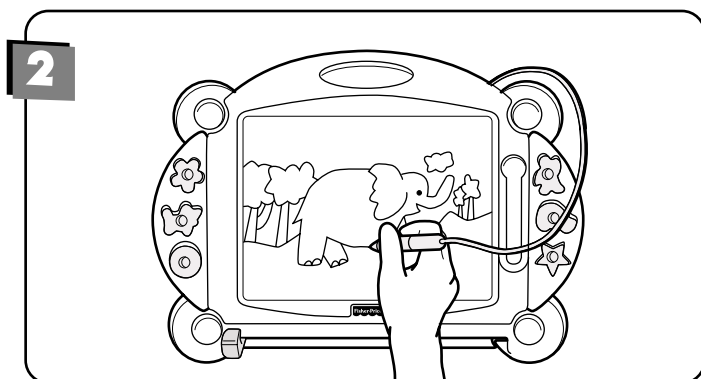
DELUXE
Magna Doodle®

Instructions

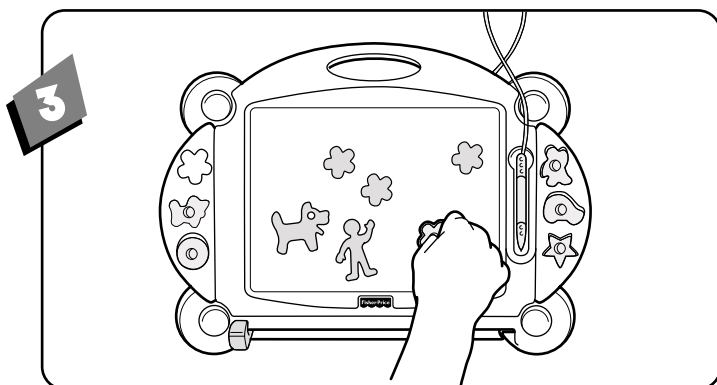
IMPORTANT! Before first-time use, completely darken the drawing screen with one of the magnetic stampers. Slide the eraser lever from side to side to clear the drawing screen. Repeat this procedure several times to enable the drawing screen to create the cleanest, darkest images.



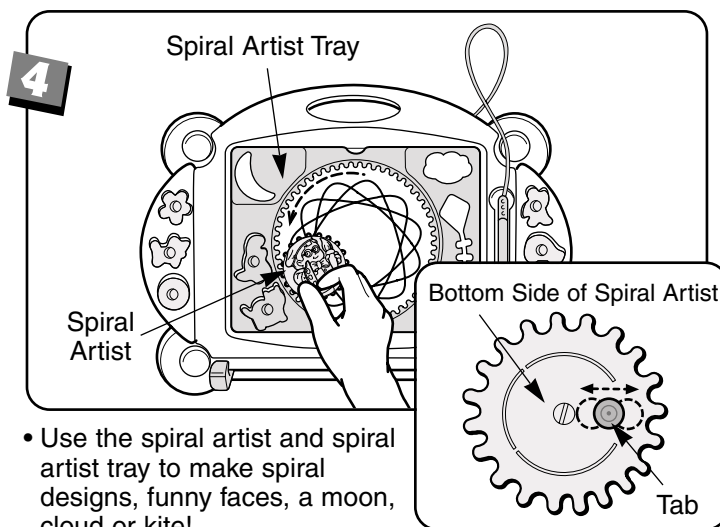
- Carefully remove the backing from a magnetic shape.
- Apply the magnetic shape to the appropriate stamper. Repeat this procedure to apply all of the magnetic shapes. One-time assembly is now complete.



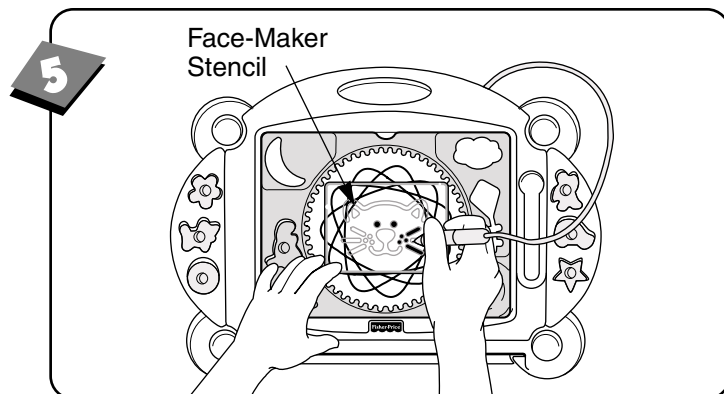
- Use the fine line pen to: create tracings, your own drawings, play games or write messages.



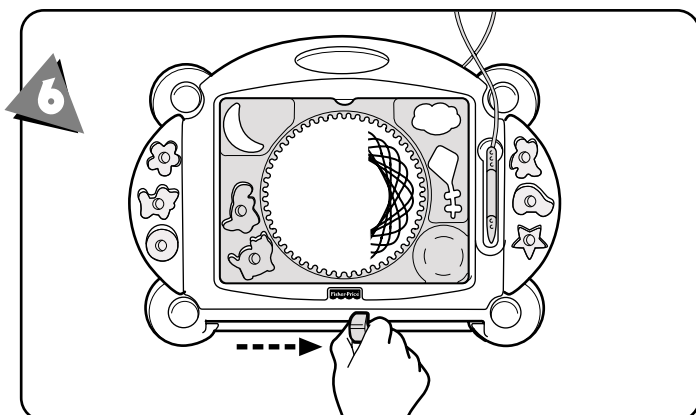
- Use the magnetic stampers to make stars, cars, people, flowers, dogs, circles, dinosaurs and cats.



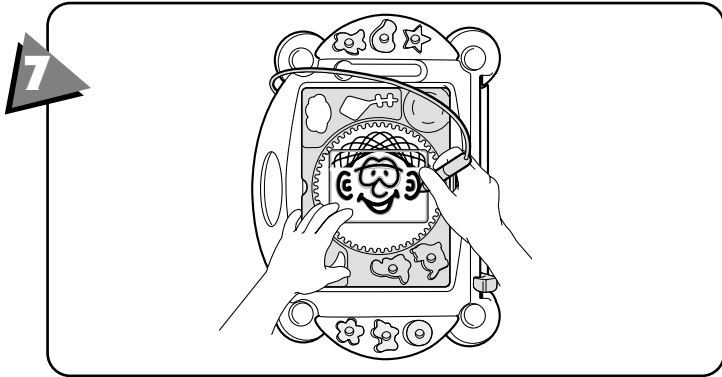
- Use the spiral artist and spiral artist tray to make spiral designs, funny faces, a moon, cloud or kite!
- To make spiral designs, place the spiral art tray over the drawing surface.
- Fit the teeth on the spiral artist into the grooves on the spiral artist tray.
- Grasp the spiral artist palette and use a circular motion to create spiral designs.
- To create three different size spiral designs, change the setting on the spiral artist. Press in and slide the tab on the bottom of the spiral artist.



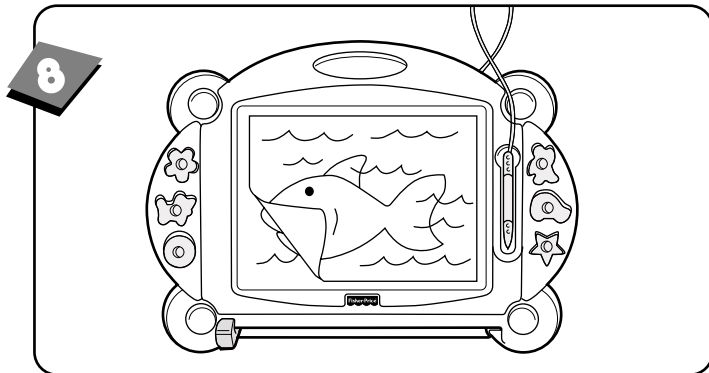
- Use the face-maker stencils to make a funny face.
- Place a face-maker stencil on the drawing screen.
- While holding the face-maker stencil steady, use the fine line pen to trace the face.



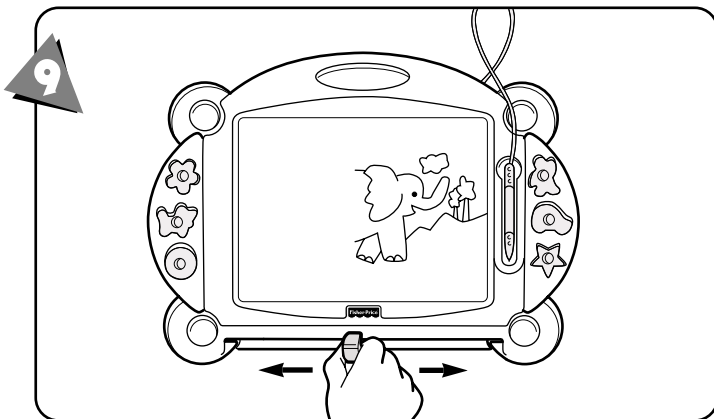
- To create silly hair for your funny face, simply make a spiral design.
- Slide the erase lever to erase half of the spiral design.



- Turn the drawing surface so that it is vertical.
- Place a face-maker stencil below the spiral design and trace with the fine line pen.



- To copy a drawing from a piece of paper onto the drawing screen, place the paper on the drawing screen and trace over the lines of the drawing with the magnetic pencil.



- To erase the drawing screen, slide the eraser lever slowly from side to side.

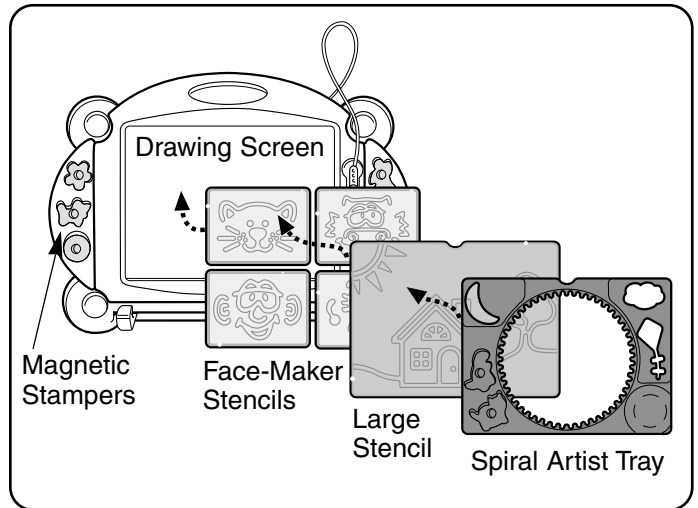
Helpful Hint: Hang DELUXE Magna Doodle® on a wall and use it as a message board!

IMPORTANT!

To avoid damage to the drawing screen:

- Do not leave the magnetic stampers on the drawing screen for extended periods of time.
- Use only the fine line pen included.
- Do not use regular pencils, pens, crayons, or markers.
- To avoid damaging the drawing screen, keep DELUXE Magna Doodle® away from extreme heat sources such as ovens, heaters and radiators.

Storage



- Fit the magnetic stampers into the sides of the DELUXE Magna Doodle®.
- Place all four small face-maker stencils on the drawing screen.
- Place the large stencil over the small face-maker stencils.
- Snap the spiral artist tray into the drawing screen.
- Fit the remaining stampers into the spiral artist tray.



Do not apply heavy pressure or force to the drawing screen. Heavy pressure is not necessary and could damage the drawing screen. A light touch makes a black line.



Use only the special, fine line pen included. Do not use any other object on the drawing screen.

Questions? We'd like to hear from you!

Call Fisher-Price® Consumer Affairs, toll-free at **1-800-432-KIDS**, 8 AM-6 PM EST Monday through Friday. Hearing-impaired consumers using TTY/TDD equipment, please call 1-800-382-7470. Or, write to: Fisher-Price® Consumer Affairs, 636 Girard Avenue, East Aurora, New York 14052.

If you have any questions about this product: **In Canada**, call **1-800-567-7724**, or write to: Mattel Canada Inc., 6155 Freemont Blvd., Mississauga, Ontario L5R 3W2. **In Great Britain**, telephone 01628 500303. **In Australia**, call the Fisher-Price Australian Consumer Advisory Service toll-free at 1-800-800-812, or write to: Mattel Australia Pty., Ltd., Port Melbourne, Victoria 3207.