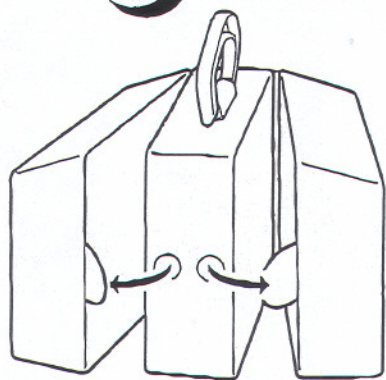
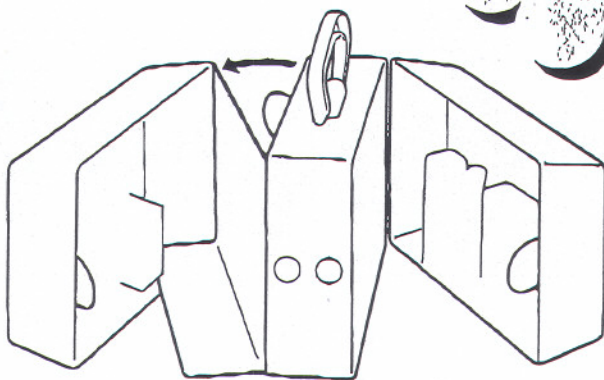




TO OPEN & CLOSE:



**1.**

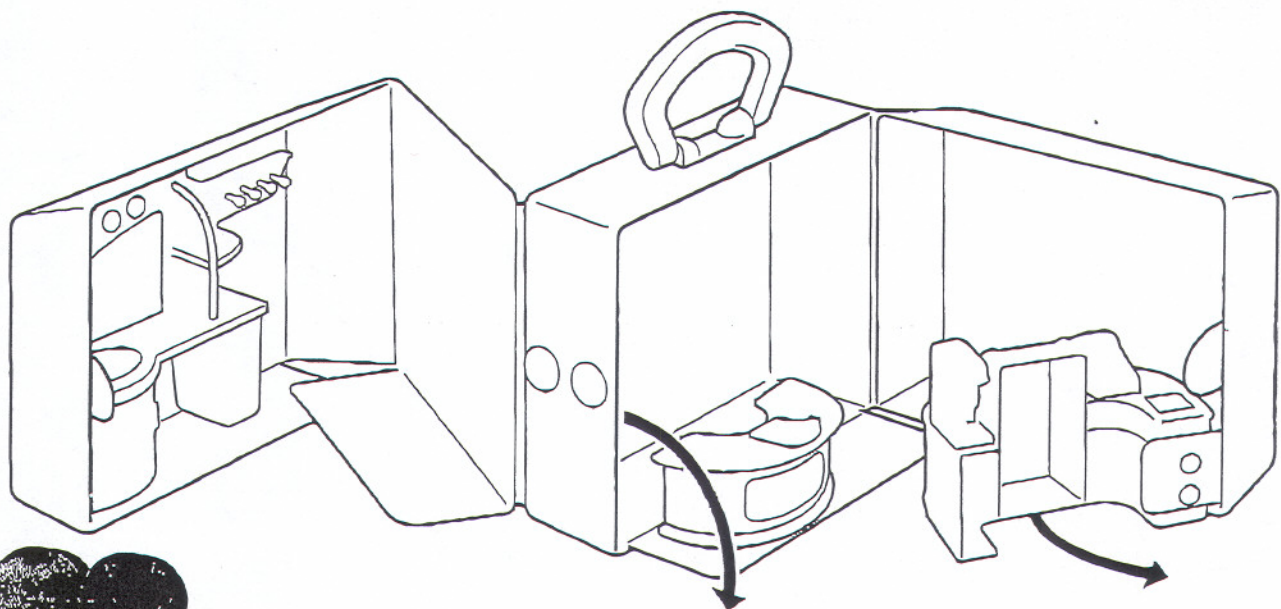


**2.**

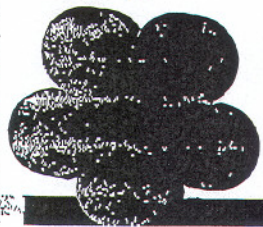
TO PLAY:



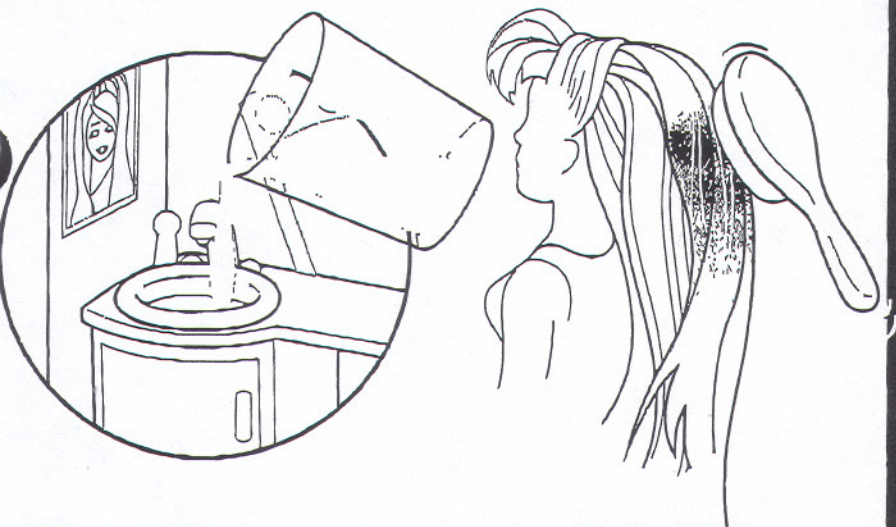
Put ice cold wa  
streaks will cha  
pink streaks. B  
To make the ch



**3.**



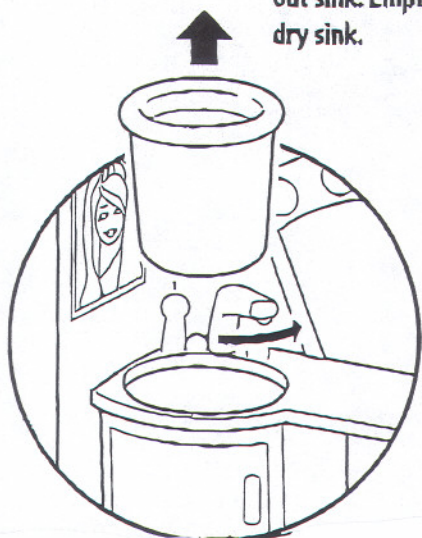
## TO PLAY:



Put ice cold water in sink. Soak sponge and brush doll's hair. Lila's hair streaks will change from blue to violet and Polly's hair will develop pink streaks. Both will return to their original color as the hair warms. To make the change occur faster - rub hair with hands.

## TO EMPTY SINK:

Swing faucet back and lift out sink. Empty water and dry sink.



## 2 YEAR LIMITED WARRANTY

Mattel, Inc. warrants to the original consumer purchaser that this product will be free of defects in material or workmanship for two years (unless specified in alternate warranties) from the date of purchase. If defective, return the product along with proof of the date of purchase, postage prepaid, to Consumer Relations, 636 Girard Avenue, East Aurora, New York 14052 for replacement or refund at our option. This warranty does not cover damage resulting from unauthorized modification, accident, misuse or abuse. In no event shall we be responsible for incidental, consequential, or contingent damages (except in those states that do not allow this exclusion or limitation). **Valid only in U.S.A.** This warranty gives you specific legal rights and you may also have other rights which vary from state to state. Some states do not allow the exclusion of incidental or consequential damages, so the above exclusions or limitations may not apply to you.

Send only the product to the address above. Send all correspondence to Consumer Relations, Mattel, Inc., 333 Continental Blvd., El Segundo, California 90245-5012 U.S.A. Or you may phone us toll-free at 1-800-524-TOYS, Monday - Friday, 8:00 a.m. - 6:00 p.m. Eastern Time. Outside U.S.A., see telephone directory for Mattel listing.

### CONSUMER INFORMATION

MATTY MATTEL™ Toys



**YOU CAN TELL IT'S MATTEL!** Call us toll-free or write with any comments or questions about our products or service Monday - Friday 8:00 a.m. - 6:00 p.m. Eastern Time. Outside U.S.A., see telephone directory for Mattel listing.

Consumer Relations, Mattel, Inc.  
333 Continental Blvd.  
El Segundo, CA 90245 USA

**1(800)524-TOYS**

**WE ARE DEDICATED TO QUALITY PRODUCTS.**



**WARNING:**

**CHOKING HAZARD** - Small parts.  
Not for children under 3 years.

**NOTE:** Color change will last longer if you do not expose this toy to intense heat or direct sunlight for prolonged periods of time.

Mattel, Inc., El Segundo, CA 90245 U.S.A. All Rights Reserved.

© 2001 Origin Products Ltd. All Rights Reserved. Licensed by Mattel, Inc.

Mattel U.K. Ltd., Vanwall Business Park, Maldenhead SL6 4UB, Helpline 01629500303.

Mattel Australia Pty, Ltd., Richmond, Victoria 3121.

Consumer Advisory Service 1800 900 812 (valid only in Australia).