

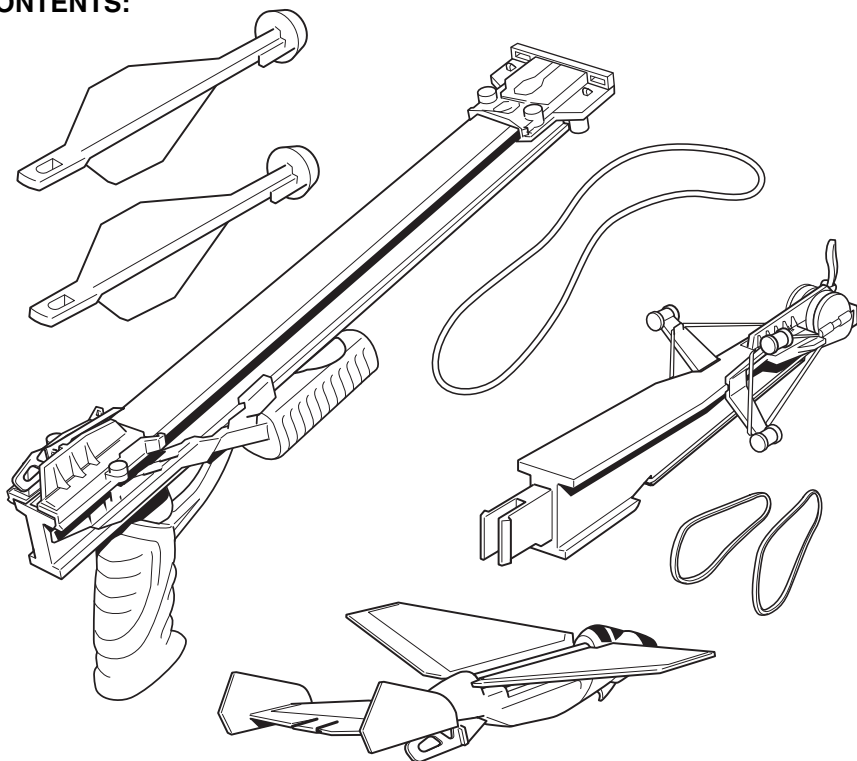


TRANSFORMING SLING SHOTZ BLASTER™

INSTRUCTIONS

Note: Carefully remove plane from package.

CONTENTS:



*Keep these instructions for future reference
as they contain important information.*

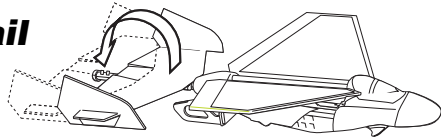
© 2001 Mattel, Inc., El Segundo, CA 90245 U.S.A.
Mattel U.K. Ltd., Vanwall Business Park, Maidenhead SL6 4UB. Helpline 01628500303.
Mattel Australia Pty Ltd., Richmond, Victoria. 3121.
Consumer Advisory Service 1 800 800 812 (valid only in Australia).
Mattel East Asia Limited, 930 Ocean Centre, Harbour City, HK, China.

8+



53508-0920 G1

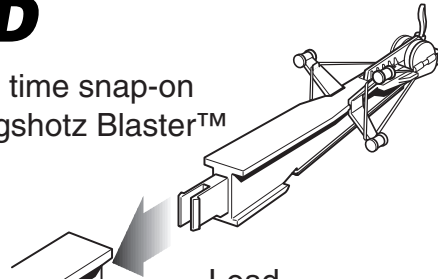
Attach Tail To Plane



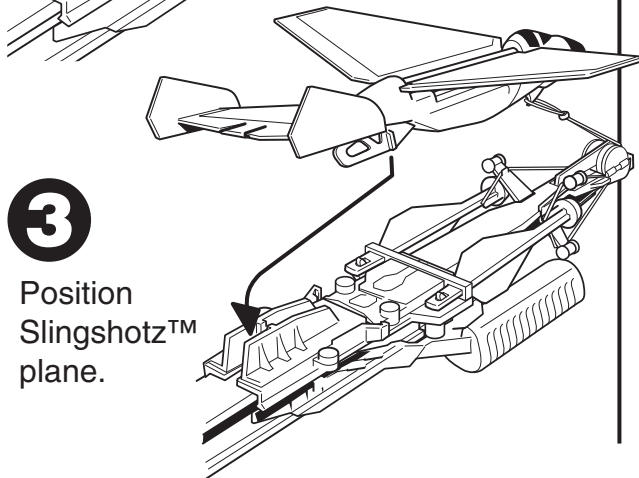
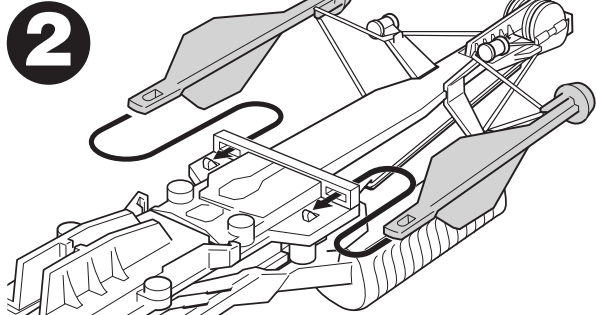
1. Carefully remove rear tail (by holding connector piece).
2. Move tail to the very end and snap in place.

LOAD

- 1 One time snap-on Slingshotz Blaster™ tip.

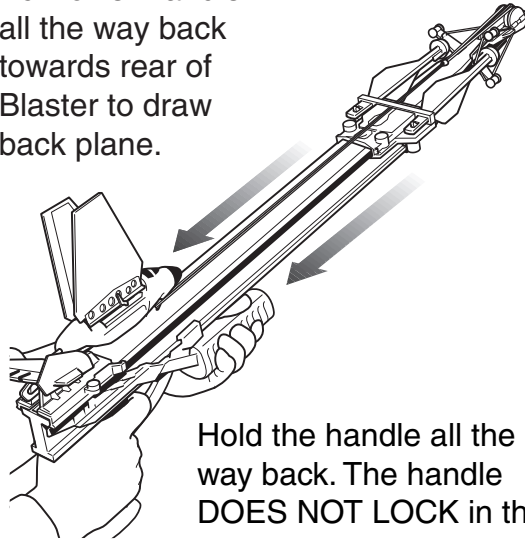


Load interceptor missiles.



4

Pull lower handle all the way back towards rear of Blaster to draw back plane.

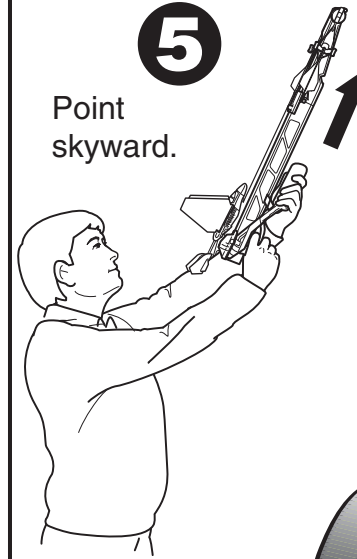


Hold the handle all the way back. The handle DOES NOT LOCK in the back position.

LAUNCH 'EM UP

5

Point skyward.



CORRECT ANGLE

6

Press trigger to launch the Slingshotz plane.



7

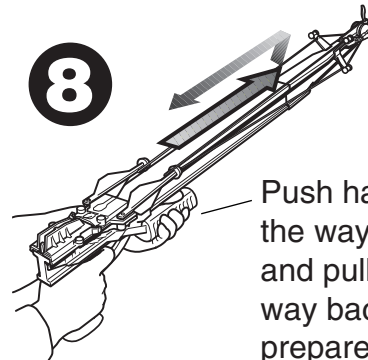
Wings open after reaching maximum height.

Mid-Air Transformation

TRY TO BLAST 'EM DOWN

8

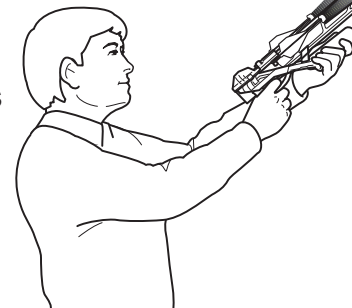
Push handle all the way forward and pull all the way back, to prepare missiles for launch.



Hold the handle all the way back. The handle DOES NOT LOCK in the back position.

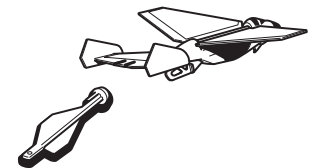
9

Point towards plane.



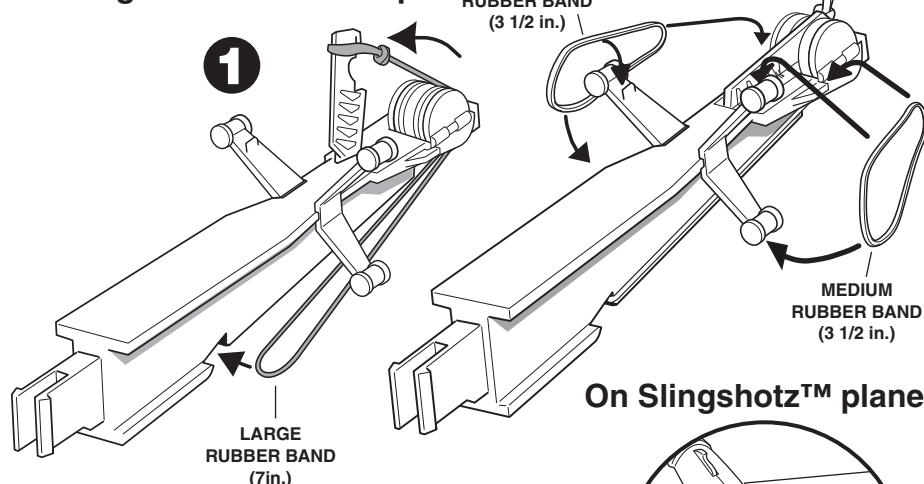
10

Press trigger to fire missiles.

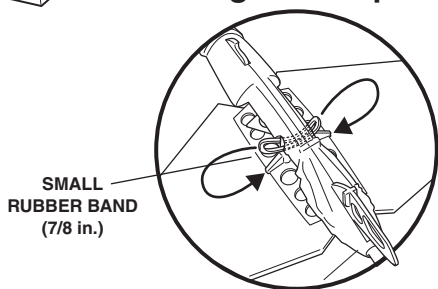


RUBBER BAND REPLACEMENT

On Slingshotz Blaster™ tip.

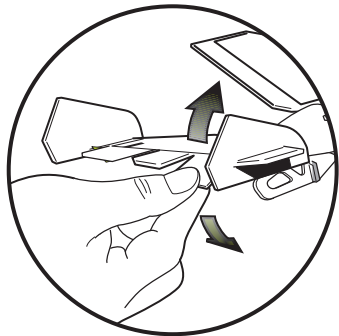


On Slingshotz™ plane.



ADJUST TAIL FLAPS

If necessary, adjust tail flaps on both sides for better performance.



! CAUTION: DO NOT aim towards people or animals. **DO NOT** launch plane or missiles at people or animals. **DO NOT** pull launcher close to your face when launching plane or missiles. Use in an open area away from trees and power lines. If plane gets caught in an obstruction, **DO NOT** try to climb up and release it yourself. Ask an adult for assistance.

2-YEAR LIMITED WARRANTY

Mattel, Inc. warrants to the original consumer purchaser that this product will be free of defects in material or workmanship for two years (unless specified in alternate warranties) from the date of purchase. If defective, return the product along with proof of the date of purchase, postage prepaid, to Consumer Relations, 636 Girard Avenue, East Aurora, New York 14052 for replacement or refund at our option. This warranty does not cover damage resulting from unauthorized modification, accident, misuse or abuse. In no event shall we be responsible for incidental, consequential, or contingent damages (except in those states that do not allow this exclusion or limitation). **Valid only in U.S.A.** This warranty gives you specific legal rights and you may also have other rights which vary from state to state. Some states do not allow the exclusion of incidental or consequential damages, so the above exclusions or limitations may not apply to you. Send only the product to the address above.

Send all correspondence to Consumer Relations, Mattel, Inc., 333 Continental Blvd., El Segundo, California 90245-5012 U.S.A. Or you may phone us toll-free at 1-800-524-TOYS, Monday-Friday, 8:00 a.m.-6:00 p.m. Eastern Time. Outside U.S.A., see telephone directory for Mattel listing.

CONSUMER INFORMATION



YOU CAN TELL IT'S MATTEL!™ Call us toll-free or write with any comments or questions about our products or service. Monday-Friday, 8:00 a.m.-6:00 p.m. Eastern Time. Outside U.S.A., see telephone directory for Mattel listing. Consumer Relations, Mattel, Inc., 333 Continental Blvd., El Segundo, CA 90245 U.S.A.

1 (800) 524-TOYS



CONFORMS TO THE SAFETY REQUIREMENTS OF ASTM F963.

We are dedicated to quality products.