

Fisher-Price®

Twirlin' Whirlin' Garden™

Product Number: 71923



**Please keep this instruction sheet for future reference,
as it contains important information.**

Adult assembly is required.

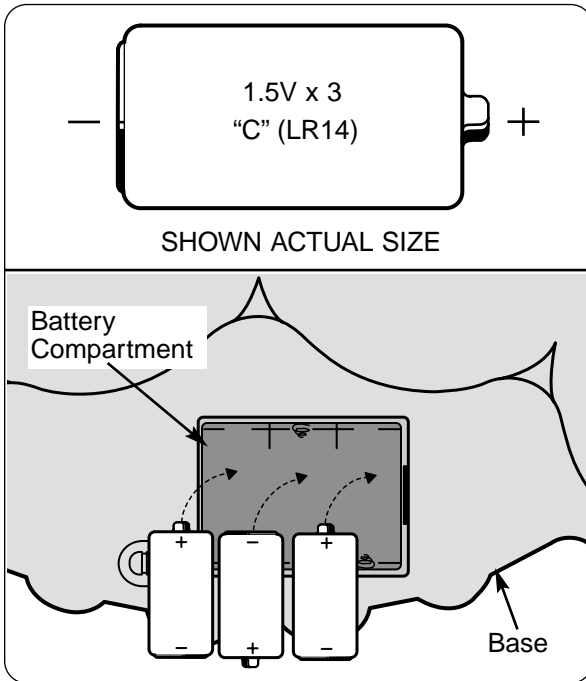
Requires three "C" batteries (included).

**Tool required for battery installation:
Phillips screwdriver (not included).**

www.fisher-price.com

Battery Replacement

For best performance, we recommend replacing the batteries that came with this toy with three, new "C" (LR14) alkaline batteries.



- Locate the battery compartment on the underside of the base.
- Loosen the screw in the battery compartment cover with a Phillips screwdriver and remove the cover.
- Insert three "C" (LR14) **alkaline** batteries in the battery compartment as shown.

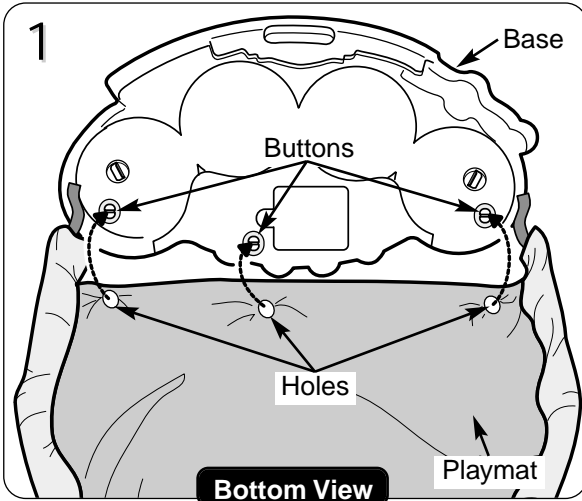
Hint: We recommend use of **alkaline** batteries for longer battery life.

- Replace the battery compartment cover and tighten the screw with a Phillips screwdriver.

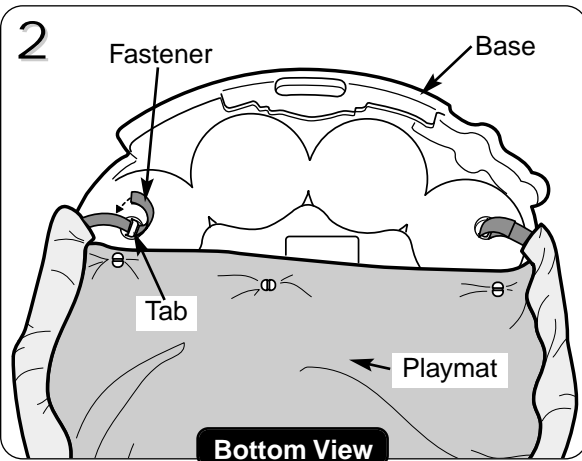
Battery Tips

- Do not mix old and new batteries.
- Do not mix different types of batteries: alkaline, standard (carbon-zinc) or rechargeable (nickel-cadmium).
- Remove the batteries during long periods of non-use. Always remove exhausted batteries from the toy. Battery leakage and corrosion can damage this toy. Dispose of batteries safely.
- Do not dispose of batteries in a fire. The batteries may explode or leak.
- Never short circuit the battery terminals.
- Non-rechargeable batteries are not to be recharged.
- Only batteries of the same or equivalent type as recommended in the Battery Replacement instructions are to be used.
- If removable rechargeable batteries are used, they are only to be charged under adult supervision.
- Rechargeable batteries are to be removed from the toy before they are charged.
- If you use a battery charger, it should be examined regularly for damage to the cord, plug, enclosure and other parts. Do not use a damaged battery charger until it has been properly repaired.

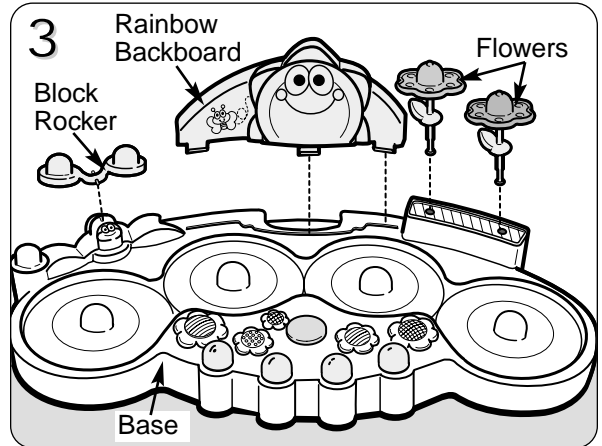
Assembly



- Position the base upside down on a flat surface with the straight edge of the base facing you.
- Position the playmat upside down with the straight edge of the playmat facing the base.
- Fit the three button holes in the playmat onto the corresponding buttons on the base.



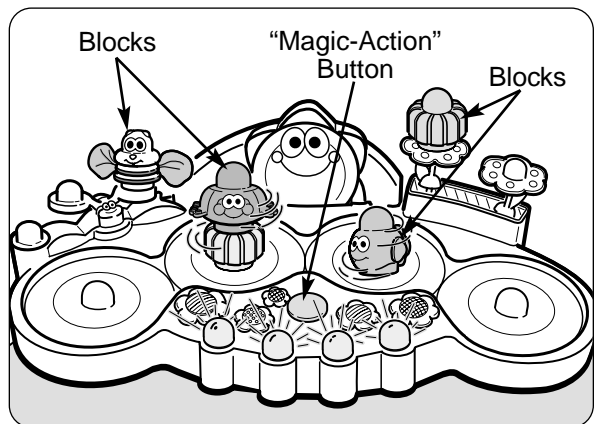
- Insert the fastener at one end of the playmat under and around the tab on the base and secure it.
- Repeat this procedure to attach and secure the fastener on the opposite side of the playmat.
- Turn the base and playmat assembly upright.



- Insert and snap the tabs on the rainbow backboard into the slots in the base.
- Insert and snap the flowers into the the base.
- Fit one of the the pegs at the center of the block rocker into a hole in the base. Press to snap the other peg on the block rocker into the hole in the base.

Assembly is now complete.

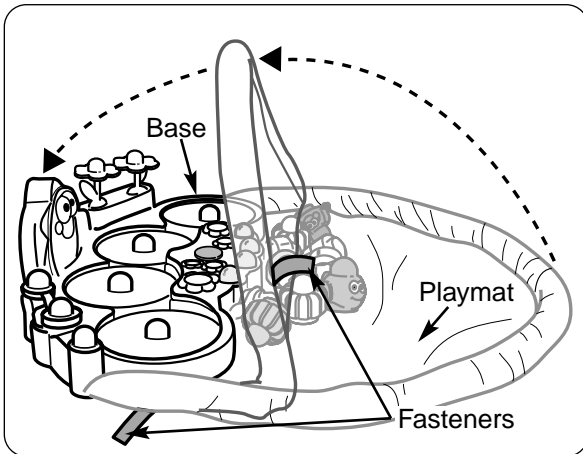
It's Playtime!



- Stack the blocks on any of the pegs on the base.
- Press the "magic-action" button on the base to bring a colorful activity "garden" to life with sound, lights and lots of twirling fun!

Note: If Twirlin' Whirlin' Garden™ does not respond when the "magic action" button is pressed, it's time to replace the batteries!

Take-Along Fun!



- The playmat easily folds and the base has a carry handle for take-along fun! Place the blocks on the playmat and fold the playmat toward the base.
- Fasten the hook-and-loop fasteners on the sides of the playmat and you're ready to go!

Care

- To clean, remove the playmat from the base. Wipe all plastic parts of this toy with a clean cloth dampened with a mild soap and water solution. **Never immerse the base.**
- Handwash the playmat using a mild detergent. Do not bleach. Rinse clean and line dry.
- This toy has no consumer serviceable parts. Do not take the base apart.

FCC Statement (United States Only)

Note: This equipment has been tested and found to comply with the limits for a Class B digital device, pursuant to Part 15 of the FCC Rules. These limits are designed to provide reasonable protection against harmful interference in a residential installation. This equipment generates, uses and can radiate radio frequency energy and, if not installed and used in accordance with the instructions, may cause harmful interference to radio communications. However, there is no guarantee that interference will not occur in a particular installation. If this equipment does cause harmful interference to radio or television reception, which can be determined by turning the equipment off and on, the user is encouraged to try to correct the interference by one or more of the following measures:

- Reorient or relocate the receiving antenna.
- Increase the separation between the equipment and receiver.
- Consult the dealer or an experienced radio/TV technician for help.

CAUTION: Changes or modifications not expressly approved by the manufacturer responsible for compliance could void the user's authority to operate the equipment.

Consumer Information

Questions? We'd like to hear from you!

Call Fisher-Price® Consumer Relations, toll-free at 1-800-432-KIDS, 8 AM - 6 PM EST Monday through Friday. Hearing-impaired consumers using TTY/TDD equipment, please call 1-800-382-7470. Or, write to: Fisher-Price® Consumer Relations, 636 Girard Avenue, East Aurora, New York 14052.

For other countries, outside the United States:

Canada: call 1-800-567-7724, or write to: Mattel Canada Inc., 6155 Freemont Blvd., Mississauga, Ontario L5R 3W2.

Great Britain: telephone 01628 500303.

Australia: Mattel Australia Pty. Ltd., 658 Church Street, Locked Bag #870, Richmond, Victoria 3121 Australia. Consumer Advisory Service 1300 135 312.

New Zealand: 16-18 William Pickering Drive, Albany 1331, Auckland.