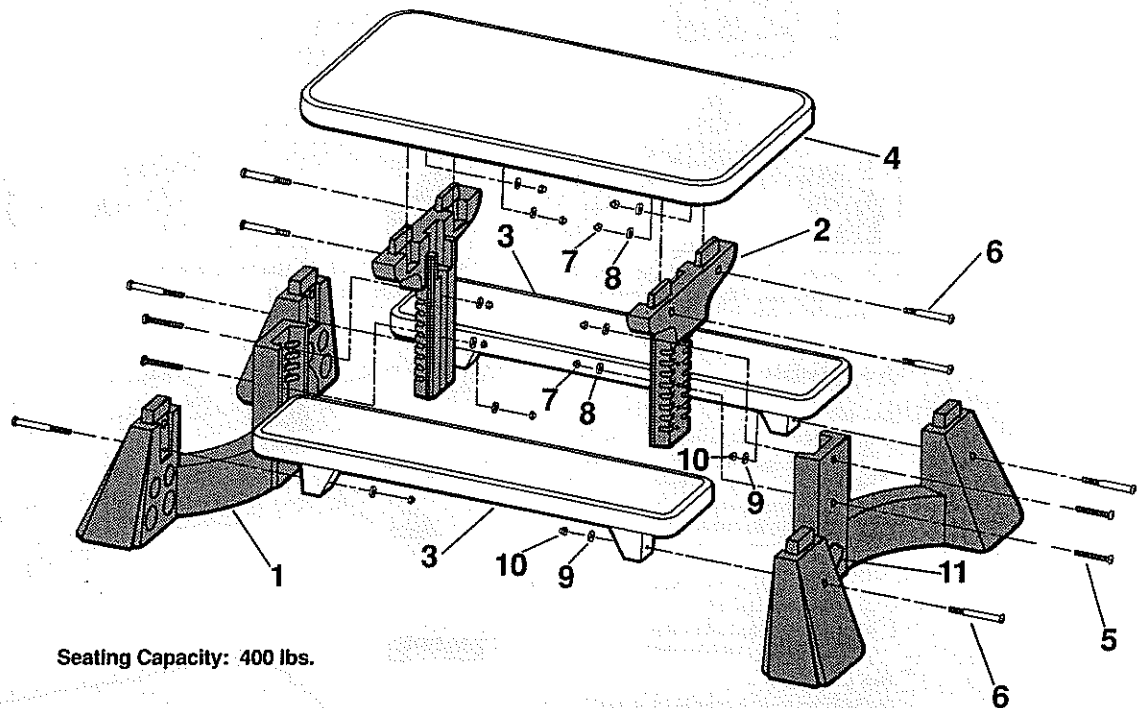


Instructions

Fisher-Price® Grow With Me Picnic Table



Seating Capacity: 400 lbs.

The Fisher-Price Grow With Me Picnic Table requires adult assembly. Please read these instructions thoroughly and identify all parts before assembly. Refer to the parts illustration and parts list for identification. If you have any problems with this product, please call Fisher-Price Consumer Affairs, toll free at 1-800-432-KIDS (1-800-432-5437) between 8 AM and 5 PM Eastern time, Monday through Friday, or write to:

Fisher-Price, Inc.
Attn: Consumer Affairs
636 Girard Avenue
East Aurora, New York 14052

CAUTION

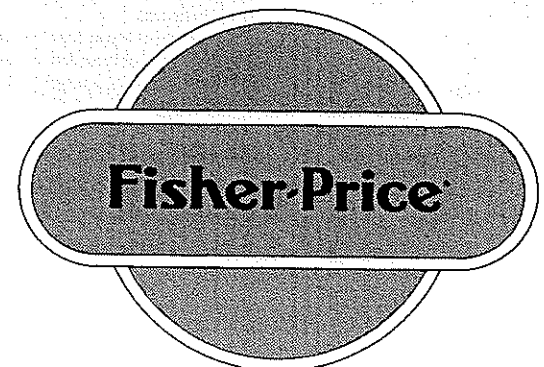
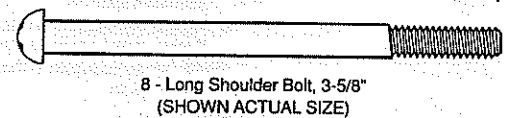
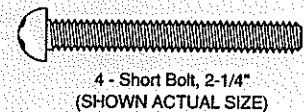
Keep small parts, hardware and plastic bags out of children's reach.

Tools needed for assembly: Phillips Screwdriver
Wrench or Pliers

Before assembly, wipe each plastic part with a damp cloth to remove any debris.

Parts List

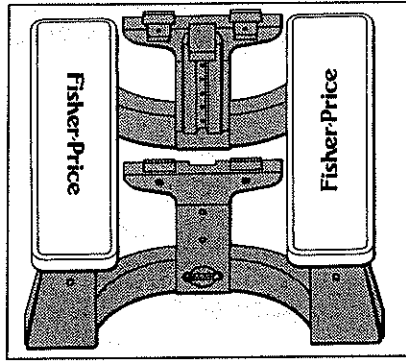
ILLUSTRATION NUMBER	DESCRIPTION	QUANTITY
1	Curved End Piece	2
2	T-Shaped Piece	2
3	Bench	2
4	Table Top	1
5	Short Bolt (2-1/4")	4
6	Long Shoulder Bolt (3-5/8")	8
7	Acorn Nut	8
8	Flat Washer	8
9	Thick Washer	4
10	Cap Nut	4
11	Label	2



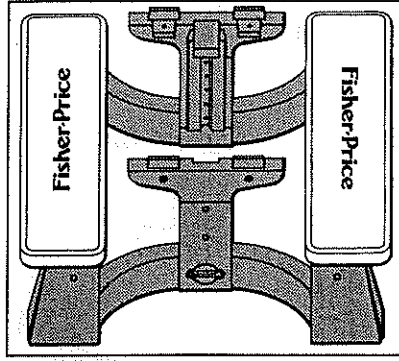
2 - Label

Positioning The Benches

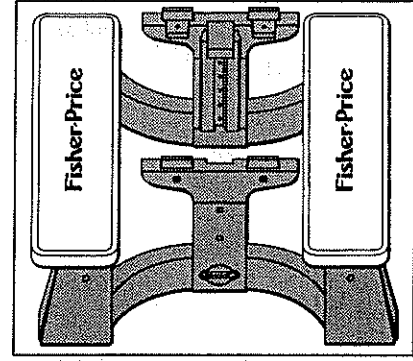
The benches can be assembled in three different ways, depending on the size of the children.



1. For smaller children, position the benches closer to the table top. Place the benches with the Fisher-Price logo facing outward.



2. For larger children, position the benches further away from the table top. Place the benches so that the Fisher-Price logo faces inward.



3. For children of different sizes, position one bench closer to and the other bench further away from the table top. Place one bench so that the Fisher-Price logo faces outward. Place the other bench so that the Fisher-Price logo faces inward.

Assembly

Step 1

- After you have decided how you would like to position the benches, place one bench between the curved end pieces, as shown.
- Insert two long shoulder bolts (3-5/8") into the outside of the curved end pieces.
- Attach a thick washer to each long shoulder bolt, as shown.
- Using a wrench or pliers, fasten a cap nut onto each long shoulder bolt.
- Repeat this procedure to attach the other bench to the curved end pieces.

Step 2

The table top may be adjusted to a comfortable height for children, in one inch increments.

- Place a T-shaped piece onto a curved end piece, so that the grooves on the T-shaped piece face the notches on the curved end piece.
- The table top height may be adjusted by moving the T-shaped piece up or down.
- Insert two short bolts (2-1/4") into the outside of the curved end piece.
- Attach a flat washer to each short bolt, as shown.
- Using a wrench or pliers, fasten an acorn nut onto each short bolt.
- Repeat this procedure to attach the other T-shaped piece to the curved end piece.

NOTE: Make sure both T-shaped pieces are at the same height.

Step 3

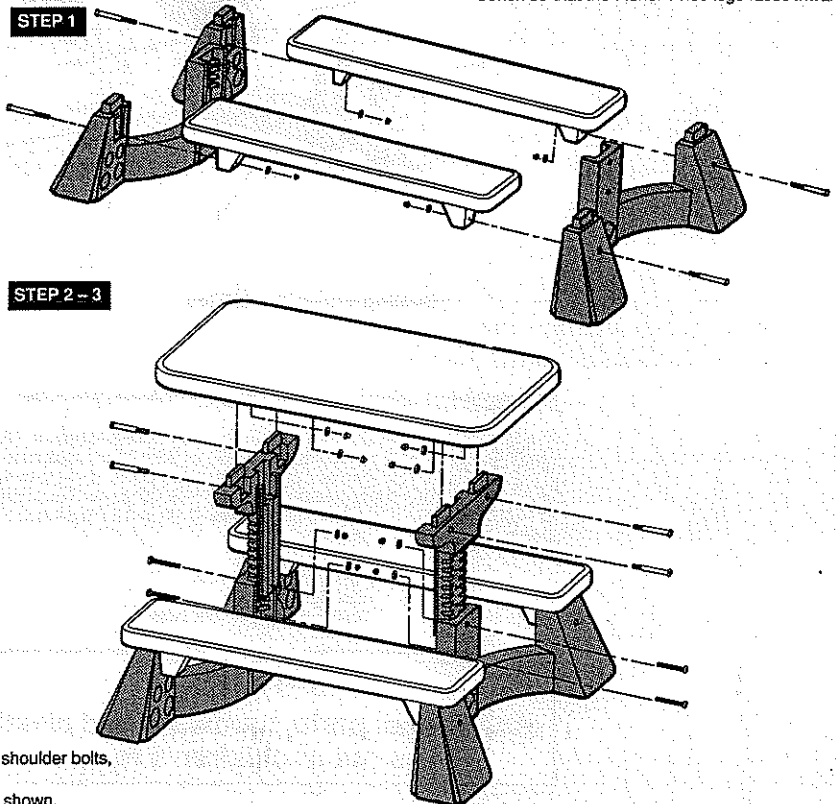
- Fit the table top over the four projections on the T-shaped pieces.
- To attach one side of the table top, insert two long shoulder bolts, into the outside of the T-shaped piece.
- Attach a flat washer to each long shoulder bolt, as shown.
- Using a wrench or pliers, fasten an acorn nut onto each long shoulder bolt.
- Repeat this procedure to attach the other side of the table top.

Step 4

- Apply the labels to the recessed areas of the curved end pieces.
To apply labels:
 - Be sure label areas are clean and dry.
 - Apply center of label first and smooth outward to remove air bubbles.
 - Labels adhere best when applied only once.
- Repositioning, though possible, reduces the effectiveness of the adhesive.

Cleaning

Use a mild soap and water solution and clean cloth. Rinse clean with water to remove soap residue.



THREE (3) YEAR LIMITED WARRANTY

Fisher-Price, Inc. 636 Girard Avenue, East Aurora, New York, warrants to the original owner that the Grow With Me Picnic Table is free from all defects in material and workmanship when used under normal conditions for a period of three (3) years from the date of purchase. This warranty does not cover color fading of the product, product parts, damage from excessive abuse or Acts of God.

Should the product fail to perform properly, we will repair or replace it free of charge. Purchaser is responsible for shipping the product to the address indicated above and for all associated freight and/or insurance cost. Fisher-Price will bear the cost of shipping the repaired or replaced item to you. This warranty is void if the owner repairs or modifies the product. This warranty excludes any liability other than the above mentioned, including but not limited to any incidental or consequential damages.

SOME STATES DO NOT ALLOW THE EXCLUSION OR LIMITATIONS OF INCIDENTAL OR CONSEQUENTIAL DAMAGES, SO THE ABOVE LIMITATION OR EXCLUSION MAY NOT APPLY TO YOU.

THIS WARRANTY GIVES YOU SPECIFIC LEGAL RIGHTS, AND YOU MAY ALSO HAVE OTHER RIGHTS WHICH MAY VARY FROM STATE TO STATE.