

Fisher-Price®

Instructions

Model Number 72722

POWER CHANGE™

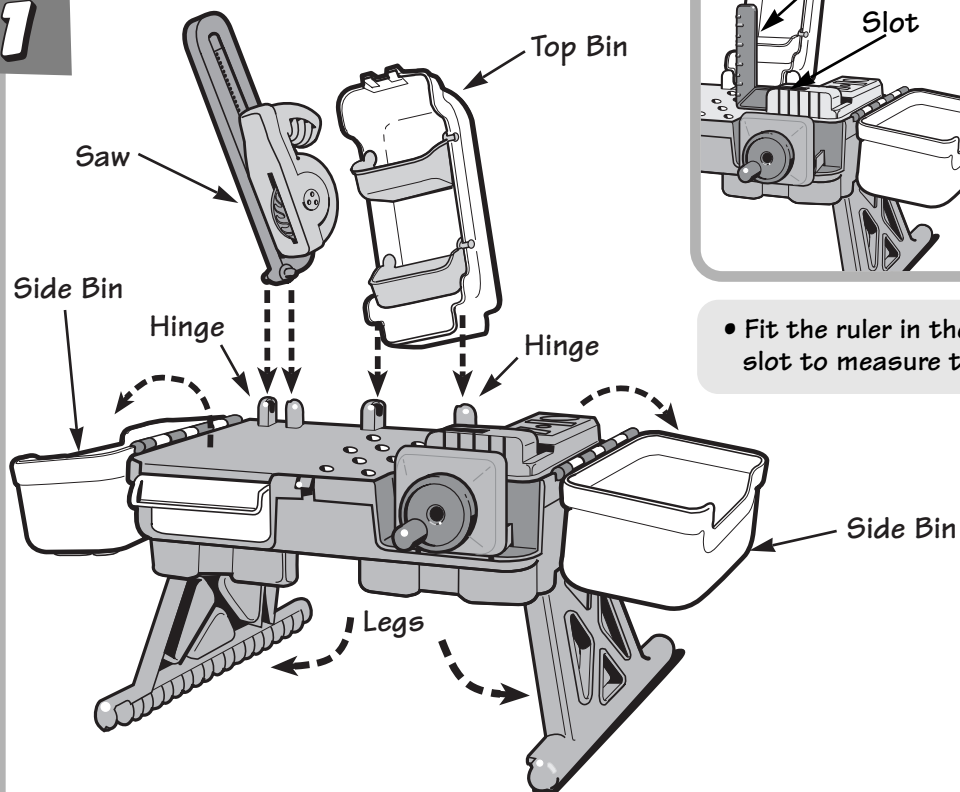
Workshop®

Please keep these instructions
for future reference.

Adult assembly is required.

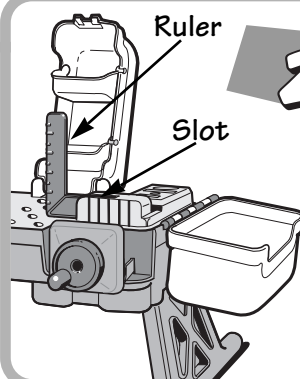
No tools needed for assembly.



1

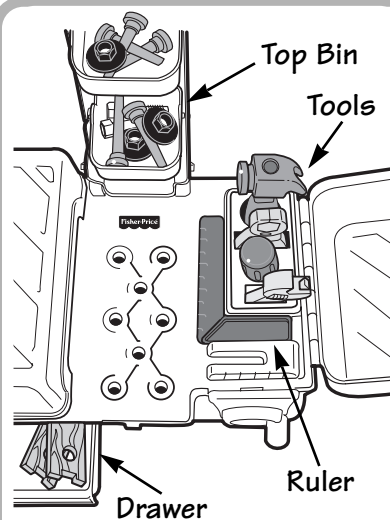
- Grasp the legs on the bottom of the workshop. Pull the legs down and out until they "snap" into position.
- Open the side bins.
- At an angle, fit one of the pegs on the saw into a hole in the hinge on the tabletop. Insert and snap the other peg on the saw into the other hole in the hinge.
- At angle, fit one of the pegs on the top bin into a hole in the hinge on the tabletop. Insert and snap the other peg on the top bin into the other hole in the hinge.

Note: When closing the side bins, be sure to press down on them until they "snap" into place.

2

- Fit the ruler in the slot to measure things!

CLEAN-UP



- Put the nuts, bolts and nails into the top bin.
- Put the wood into the drawer.
- Fit the tools into the slots in the tabletop.
- Fit the ruler, as shown, on the tabletop.

Questions?

We'd like to hear from you!

Call Fisher-Price® Consumer Affairs, toll-free at 1-800-432-KIDS, 8 AM-5 PM EST Monday through Friday. Hearing-impaired consumers using TTY/TDD equipment, please call 1-800-382-7470. Or, write to: Fisher-Price® Consumer Affairs, 636 Girard Avenue, East Aurora, New York 14052.

If you have any questions about this product:
In Canada, call 1-800-567-7724, or write to: Mattel Canada Inc., 6155 Freemont Blvd., Mississauga, Ontario L5R 3W2.

In Great Britain, telephone 01628 500303.

In Australia, call the Fisher-Price Australian Consumer Advisory Service toll-free at 1-800-800-812, or write to: Mattel Pty. Ltd., 658 Church Street, Locked Bag #870, Richmond Victoria, 3121 Australia.

www.fisher-price.com