



Please keep this instruction sheet for future reference,  
as it contains important information.

Requires four "D" (LR20) **alkaline** batteries for operation (not included).

Adult assembly is required for battery installation.

Tool required for battery installation:  
Phillips screwdriver (not included).



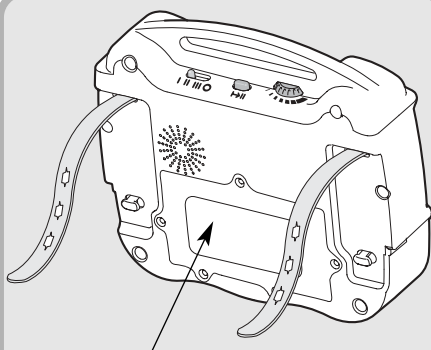
[www.fisher-price.com](http://www.fisher-price.com)

# Aquarium

## **WARNING**

To prevent entrapment of baby's head, keep distance between the bottom of the product and the crib mattress to at least 7 inches.

## **Battery Installation**



**Battery Compartment Door**

- Loosen the screws in the battery compartment door with a Phillips screwdriver. Remove the battery compartment door.
- Insert four "D" (LR20) **alkaline** batteries.

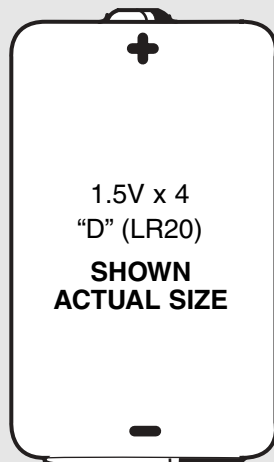
**Hint:** We recommend using **alkaline** batteries for longer battery life.

- Replace the battery compartment door and tighten the screws with a Phillips screwdriver. Do not over-tighten.
- If sounds or lights from this toy become faint or stop, it's time for an adult to change the batteries.

## **Battery Safety Information**

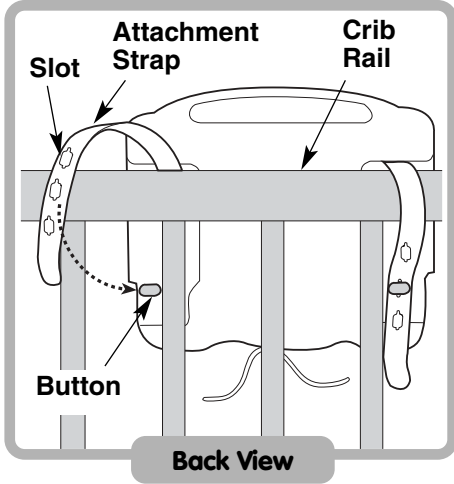
Batteries may leak fluids that can cause a chemical burn injury or ruin your toy. To avoid battery leakage:

- Do not mix old and new batteries or batteries of different types: alkaline, standard (carbon-zinc) or rechargeable (nickel-cadmium).
- Insert batteries as indicated inside the battery compartment.
- Remove batteries during long periods of non-use. Always remove exhausted batteries from the toy. Dispose of batteries safely. Do not dispose of batteries in a fire. The batteries may explode or leak.
- Never short-circuit the battery terminals.
- Use only batteries of the same or equivalent type, as recommended.
- Do not charge non-rechargeable batteries.
- Remove rechargeable batteries from the toy before charging.
- If removable, rechargeable batteries are used, they are only to be charged under adult supervision.



# Crib Attachment

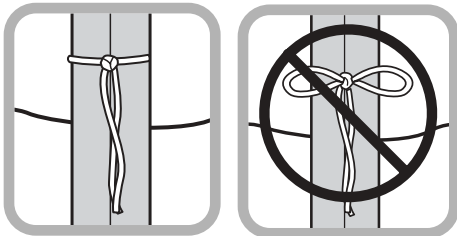
**IMPORTANT!** Always use the straps provided to attach this toy to a crib.



**Note:** If you are attaching this toy to a crib side rail that can be lowered and raised, make sure the crib side rail is in the raised (locked) position.

- Position the toy inside the crib.
- Wrap one of the toy's attachment straps around the crib rail.
- Fasten the attachment strap slot to the button on the back of the toy.
- Repeat this procedure to secure the other attachment strap.

**Note:** This toy should be snug against the crib rail and spindles. Use the strap slot that provides the tightest fit.

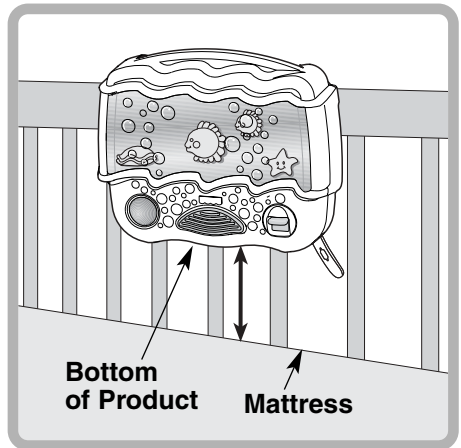


- Tie the toy's strings to a crib spindle.

**Note:** It is better to tie the strings in a knot than a bow, since a bow may be easily untied.

## **WARNING**

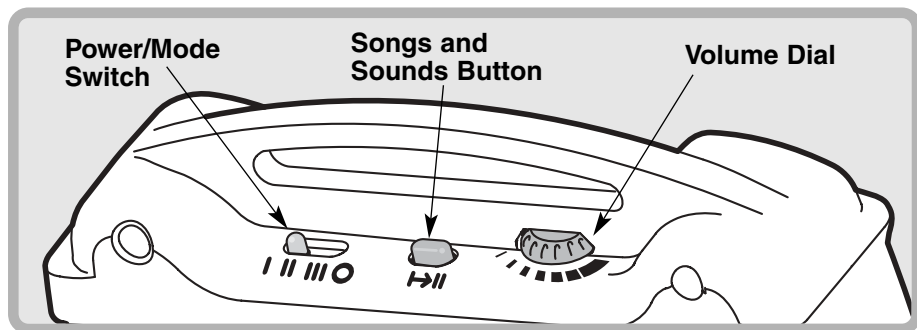
To prevent entrapment of baby's head, keep distance between the bottom of the product and the crib mattress to at least 7 inches.



- Make sure the distance between the bottom of the product and the crib mattress is **at least 7 inches**.
- If the distance is less than 7 inches: readjust the attachment straps to lift the product; or lower the crib mattress.

**IMPORTANT!** If this toy is attached to a crib side rail that can be lowered and raised, make sure it is in the raised (locked) position whenever a child is in the crib.

# Soothing Sights and Sounds



## Power/Mode Switch

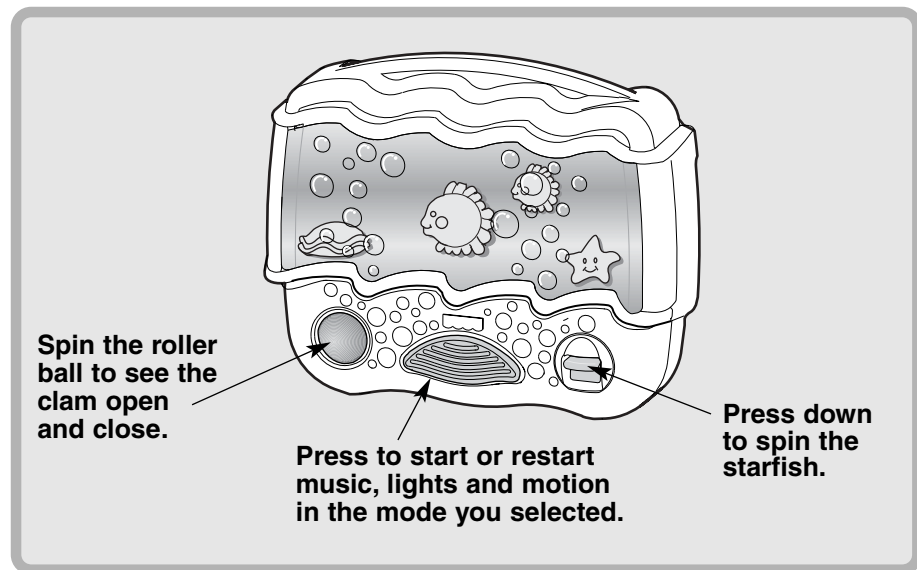
- III Enjoy about 5 minutes of music, lights, bubbles and swimming fish.
- II Listen and watch 10 minutes of music and lights.
- I Listen to music only.
- Slide the switch to the off position when the toy is not in use.

## Songs and Sounds Button

- ↔ Press to choose from three different songs, a random play of one of these songs or three different aquatic sounds.

## Volume Dial

- Turn to a comfortable listening level for baby.



Spin the roller ball to see the clam open and close.

Press to start or restart music, lights and motion in the mode you selected.

Press down to spin the starfish.

## Care

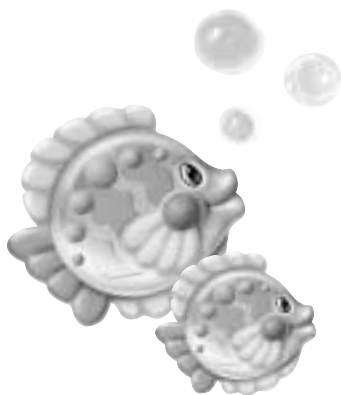
- To clean, wipe the surface of this toy with a damp cloth. Do not immerse this toy.
- Do not drop this toy on a hard surface.
- This toy has no consumer serviceable parts. Please do not take this toy apart.

## FCC Note (United States Only)

**Note:** This equipment has been tested and found to comply with the limits for a Class B digital device, pursuant to Part 15 of the FCC Rules. These limits are designed to provide reasonable protection against harmful interference in a residential installation. This equipment generates, uses and can radiate radio frequency energy and, if not installed and used in accordance with the instructions, may cause harmful interference to radio communications. However, there is no guarantee that interference will not occur in a particular installation. If this equipment does cause harmful interference to radio or television reception, which can be determined by turning the equipment off and on, the user is encouraged to try to correct the interference by one or more of the following measures:

- Reorient or relocate the receiving antenna.
- Increase the separation between the equipment and receiver.
- Consult the dealer or an experienced radio/TV technician for help.

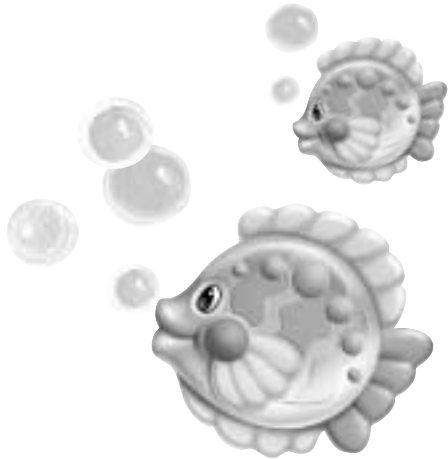
**Note:** Changes or modifications not expressly approved by the manufacturer responsible for compliance could void the user's authority to operate the equipment.



## Consumer Information

### Questions? We'd like to hear from you!

Call Fisher-Price® Consumer Relations, toll-free at **1-800-432-5437**, 8 AM- 6 PM EST Monday through Friday. Hearing-impaired consumers using TTY/TDD equipment, please call 1-800-382-7470. Or, write to: Fisher-Price® Consumer Relations, 636 Girard Avenue, East Aurora, New York 14052.



### For countries outside the United States:

**CANADA:** Questions? **1-800-567-7724**. Mattel Canada Inc., 6155 Freemont Blvd., Mississauga, Ontario L5R 3W2.

**GREAT BRITAIN:** Mattel UK Ltd, Vanwall Business Park, Maidenhead SL6 4UB. Helpline: 01628 500302.

**AUSTRALIA:** Mattel Australia Pty. Ltd., 658 Church Street, Locked Bag #870, Richmond, Victoria 3121 Australia. Consumer Advisory Service 1300 135 312.

**NEW ZEALAND:** 16-18 William Pickering Drive, Albany 1331, Auckland.

**ASIA:** Mattel East Asia Ltd, Room 1106, South Tower, World Finance Centre, Harbour City, Tsimshatsui, HK, China.