

Fisher-Price®

Ocean Wonders Aquarium



Product Number 73545

Please keep this instruction sheet for future reference,
as it contains important information.

Requires four "D" (LR20) **alkaline** batteries for operation (not included).

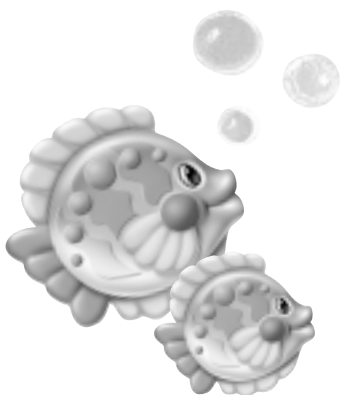
Adult assembly is required for battery installation.

Tool required for battery installation:
Phillips screwdriver (not included).

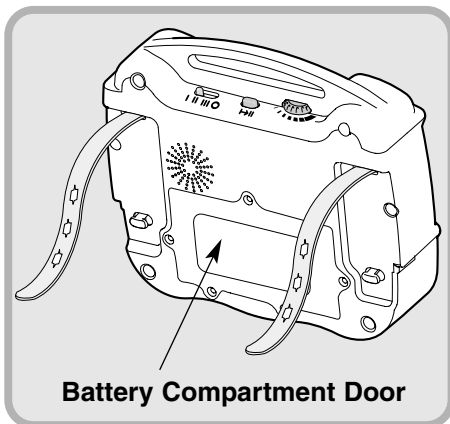
Discover what's possible™...www.fisher-price.com

Before Use

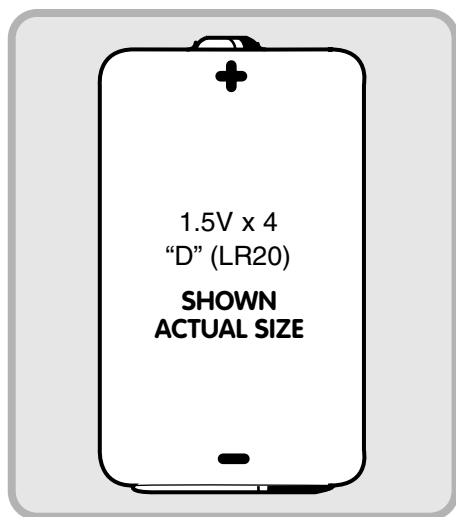
A plastic tab was attached to the toy for in-store demonstration purposes. While the tab may have already been removed, check the back of the toy to be sure. If the plastic tab is still attached, pull and remove the tab from the toy. Throw the plastic tab away.



Battery Installation



- Loosen the screws in the battery compartment door with a Phillips screwdriver. Lift to open the battery compartment door.
- Insert four "D" (LR20) **alkaline** batteries, as indicated inside the battery compartment.
- Replace the battery compartment door and tighten the screws with a Phillips screwdriver. Do not over-tighten.

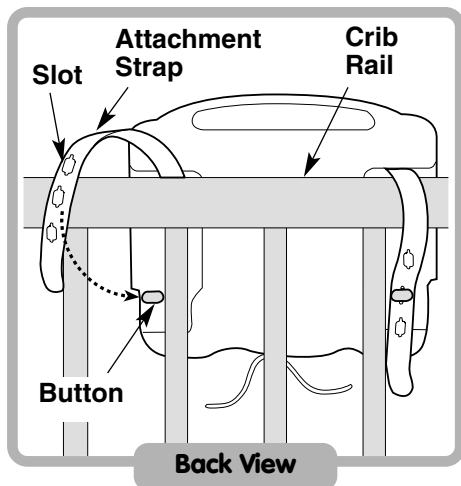


Battery Tips

- Low battery power causes this product to operate erratically: no sounds/no lights/no movement; and product may not turn off. Remove and discard all four batteries and replace with four new "D" (LR20) **alkaline** batteries.
- Do not mix old and new batteries.
- Do not mix different types of batteries: alkaline, standard (carbon-zinc) or rechargeable (nickel-cadmium).
- Remove the batteries during long periods of non-use. Always remove exhausted batteries from the toy. Battery leakage and corrosion can damage this toy. Dispose of batteries safely.
- Do not dispose of batteries in a fire. The batteries may explode or leak.
- Never short circuit the battery terminals.
- Non-rechargeable batteries are not to be recharged.
- Only batteries of the same or equivalent type as recommended in the "Battery Installation" instructions are to be used.
- If removable rechargeable batteries are used, they are only to be charged under adult supervision.
- Rechargeable batteries are to be removed from the toy before they are charged.
- If you use a battery charger, it should be examined regularly for damage to the cord, plug, enclosure and other parts. Do not use a damaged battery charger until it has been properly repaired.
- If sounds or lights from this toy become faint or stop, it's time for an adult to change the batteries. Remove exhausted batteries and dispose of them. Replace the batteries with four, new "D" (LR20) **alkaline** batteries.

Crib Attachment

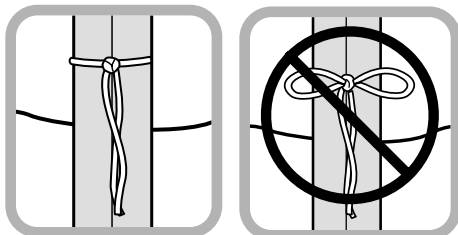
IMPORTANT! Always use the straps provided to attach this toy to a crib.



Note: If you are attaching this toy to a crib side rail that can be lowered and raised, make sure the crib side rail is in the raised (locked) position.

- Position the toy inside the crib.
- Wrap one of the toy's attachment straps around the crib rail.
- Fasten the attachment strap slot to the button on the back of the toy.
- Repeat this procedure to secure the other attachment strap.

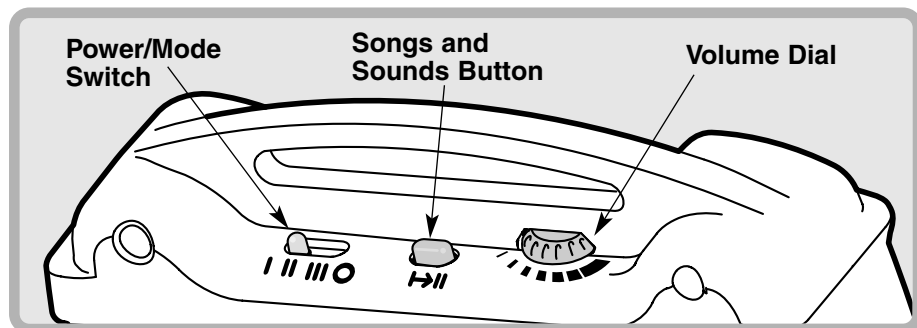
Note: This toy should be snug against the crib rail and spindles. Use the strap slot that provides the tightest fit.



- Tie the toy's strings to a crib spindle.

Note: It is better to tie the strings in a knot than a bow, since a bow may be easily untied.

Soothing Sights and Sounds



Power/Mode Switch

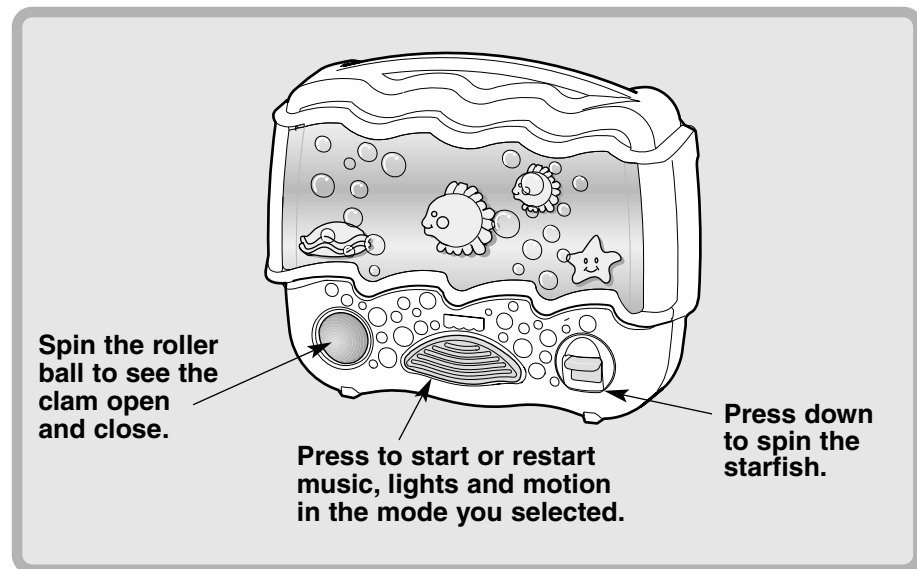
- III** Enjoy 5 minutes of music, lights, bubbles and swimming fish.
- II** Listen and watch 10 minutes of music and lights.
- I** Listen to music only.
- Slide the switch to the off position when the toy is not in use.

Songs and Sounds Button

- ➡II** Press to choose from three different songs, a random play of one of these songs or three different aquatic sounds.

Volume Dial

-  Turn to a comfortable listening level for baby.



Spin the roller ball to see the clam open and close.

Press to start or restart music, lights and motion in the mode you selected.

Press down to spin the starfish.

Care

- To clean, wipe the surface of this toy with a damp cloth. Do not immerse this toy.
- If sounds or lights from this toy become faint or stop, it's time for an adult to change the batteries. Remove exhausted batteries and dispose of them safely. Replace the batteries with four "D" (LR20) **alkaline** batteries.
- Do not drop this toy on a hard surface.
- This toy has no consumer serviceable parts. Please do not take this toy apart.

FCC Note (United States Only)

Note: This equipment has been tested and found to comply with the limits for a Class B digital device, pursuant to Part 15 of the FCC Rules. These limits are designed to provide reasonable protection against harmful interference in a residential installation. This equipment generates, uses and can radiate radio frequency energy and, if not installed and used in accordance with the instructions, may cause harmful interference to radio communications. However, there is no guarantee that interference will not occur in a particular installation. If this equipment does cause harmful interference to radio or television reception, which can be determined by turning the equipment off and on, the user is encouraged to try to correct the interference by one or more of the following measures:

- Reorient or relocate the receiving antenna.
- Increase the separation between the equipment and receiver.
- Consult the dealer or an experienced radio/TV technician for help.

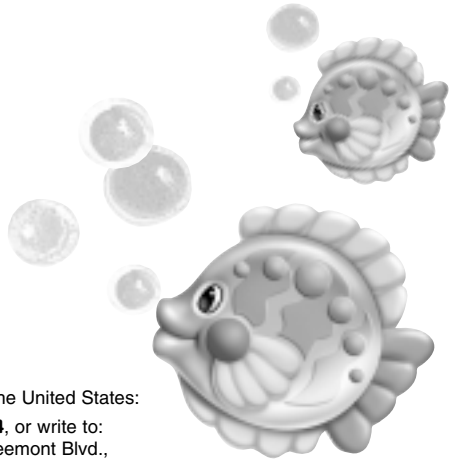
CAUTION: Changes or modifications not expressly approved by the manufacturer responsible for compliance could void the user's authority to operate the equipment.

Consumer Information

Questions? We'd like to hear from you!

Call Fisher-Price® Consumer Relations, toll-free at **1-800-432-KIDS**, 8 AM – 6 PM EST Monday through Friday. Hearing-impaired consumers using TTY/TDD equipment, please call 1-800-382-7470. Or, write to:

Fisher-Price® Consumer Relations
636 Girard Avenue
East Aurora, New York 14052



For other countries outside the United States:

Canada: call **1-800-567-7724**, or write to:
Mattel Canada Inc., 6155 Freemont Blvd.,
Mississauga, Ontario L5R 3W2.

Great Britain: telephone 01628 500302.

Australia: Mattel Australia Pty. Ltd., 658 Church Street,
Locked Bag #870, Richmond,
Victoria 3121 Australia. Consumer Advisory Service 1300 135 312.

New Zealand: 16-18 William Pickering Drive, Albany 1331, Auckland.