

Fisher-Price®

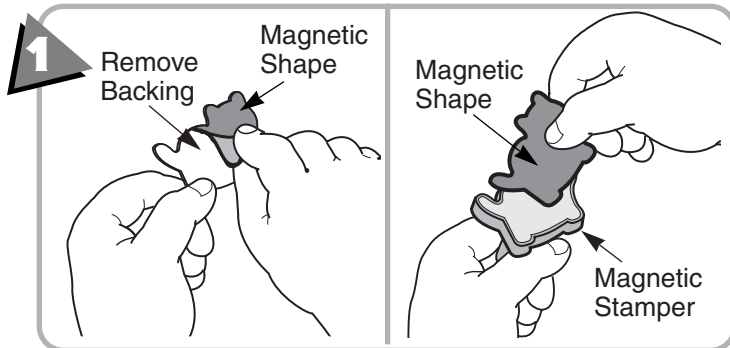
MagnaDoodle®

+ COLOR

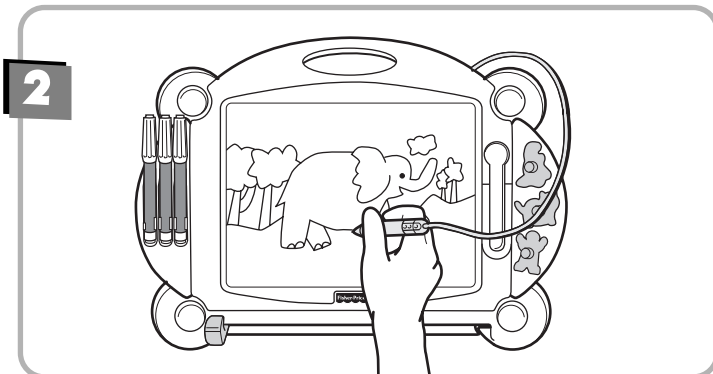
Instructions - Model Number 73945

Magnetic Drawing

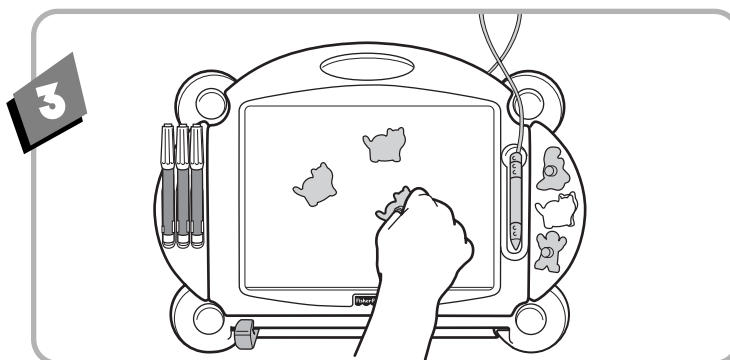
IMPORTANT! Before first-time use, completely darken the drawing screen with one of the magnetic stampers. Slide the eraser lever from side to side to clear the drawing screen. Repeat this procedure several times to enable the drawing screen to create the cleanest, darkest images.



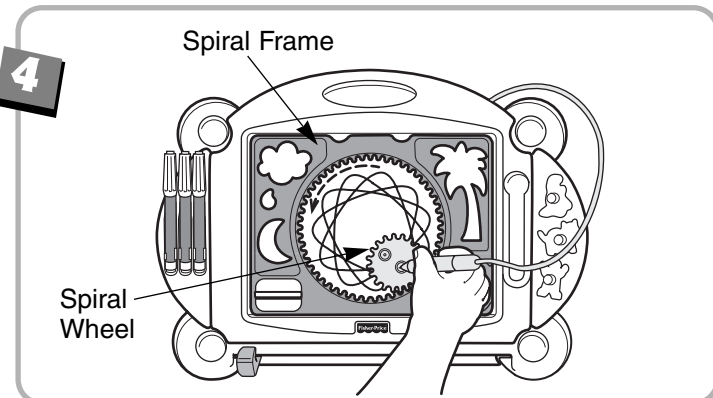
- Carefully remove the backing from a magnetic shape.
- Apply the magnetic shape to the appropriate stamper. Repeat this procedure to apply all of the magnetic shapes. One-time assembly is now complete.



- Use the magnetic pencil to: create tracings, your own drawings, play games or write messages.

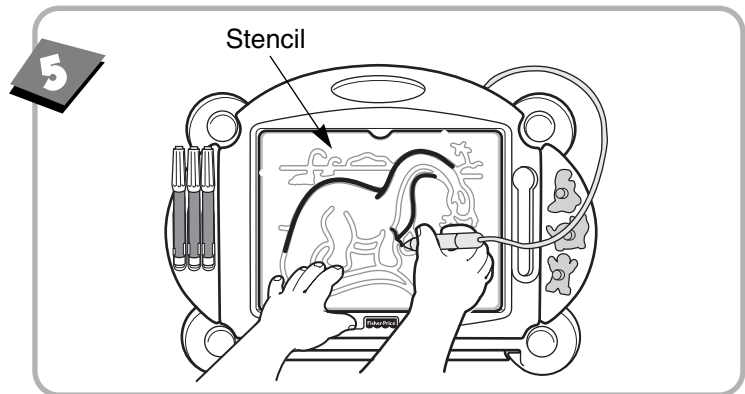


- Use the magnetic stampers to make people, dinosaurs and cats.

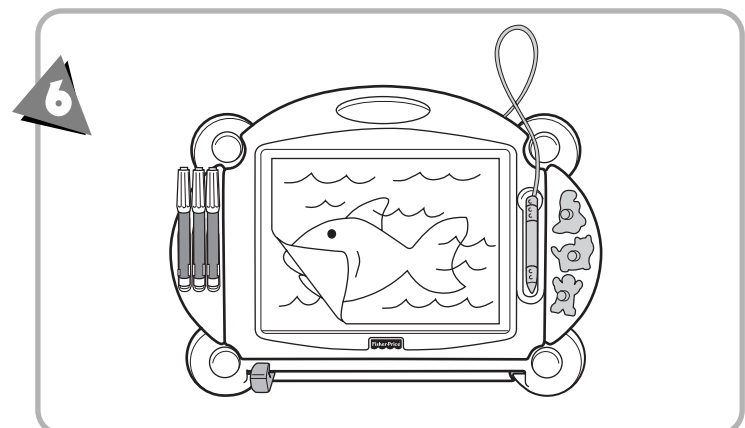


- Use the spiral wheel and frame to make spiral designs, funny faces, a moon, cloud or a palm tree!
- To make spiral designs, place the spiral frame over the drawing surface.

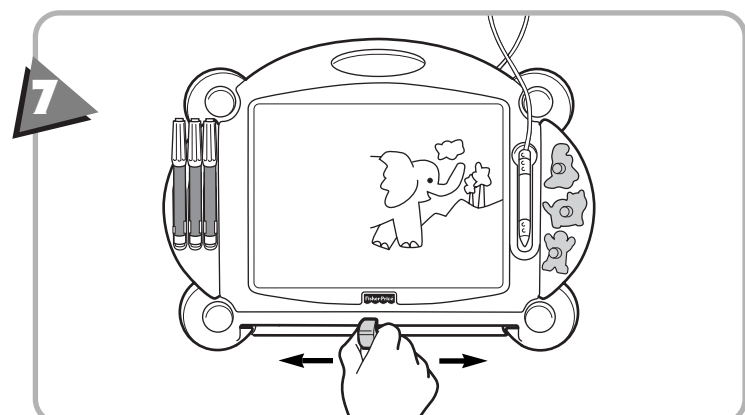
- Fit the teeth on the spiral wheel into the grooves on the spiral frame.
- To create two different spiral designs, insert the magnetic pencil into one of the two holes in the spiral wheel.
- Grasp the pencil and use a circular motion to create spiral designs.



- To make a drawing from a stencil, remove the spiral frame and place a stencil on the drawing screen.
- Use the magnetic pencil to trace the design.



- To copy a drawing from a piece of paper onto the drawing screen, place the paper on the drawing screen and trace over the lines of the drawing with the magnetic pencil.



- To erase the drawing screen, slide the eraser lever slowly from side to side.

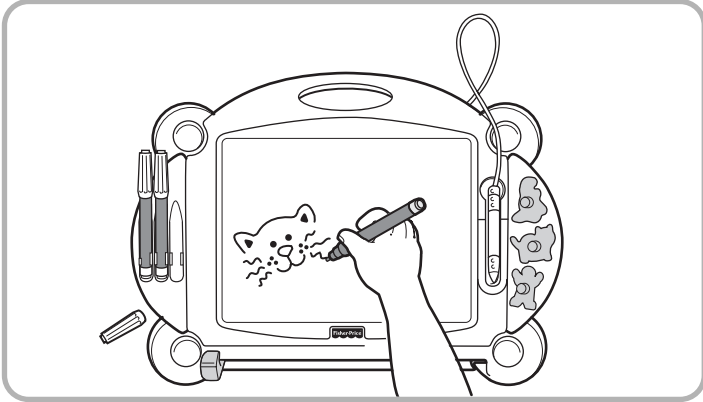
Helpful Hint: Hang Magna Doodle® + Color on a wall and use it as a message board!

IMPORTANT!

To avoid damage to the drawing screen:

- Do not leave the magnetic stampers on the drawing screen for extended periods of time.
- Use only the fine line pen or markers included.
- Do not use regular pencils, pens, crayons, or markers.
- To avoid damaging the drawing screen, keep Magna Doodle + Color away from extreme heat sources such as ovens, heaters and radiators.

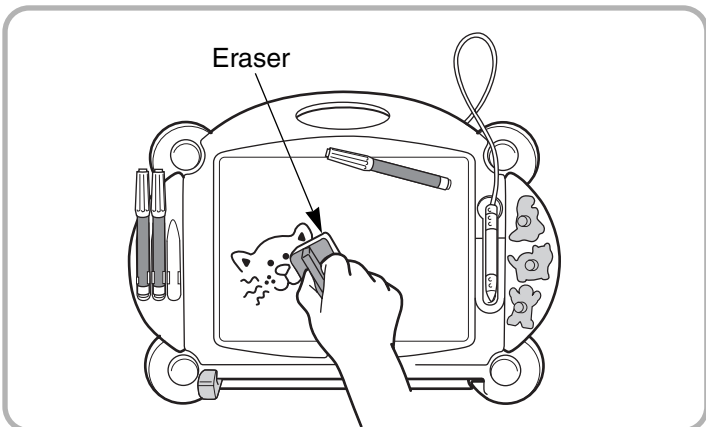
Dry Marker Drawing



IMPORTANT! Use only Fisher-Price® dry-erase markers included. Not all dry-erase markers are made especially for children. To purchase Fisher-Price dry-erase markers, please call Fisher-Price Consumer Relations at 1-800-432-KIDS.

- Remove the spiral frame or any stencil from the drawing surface.
- Use Fisher-Price dry-erase markers to create images on the drawing surface.

Hint: Be sure to let markings dry for at least 15 seconds before touching.



- To remove markings from the drawing surface, simply wipe the surface with the eraser. The eraser stores in the spiral frame.

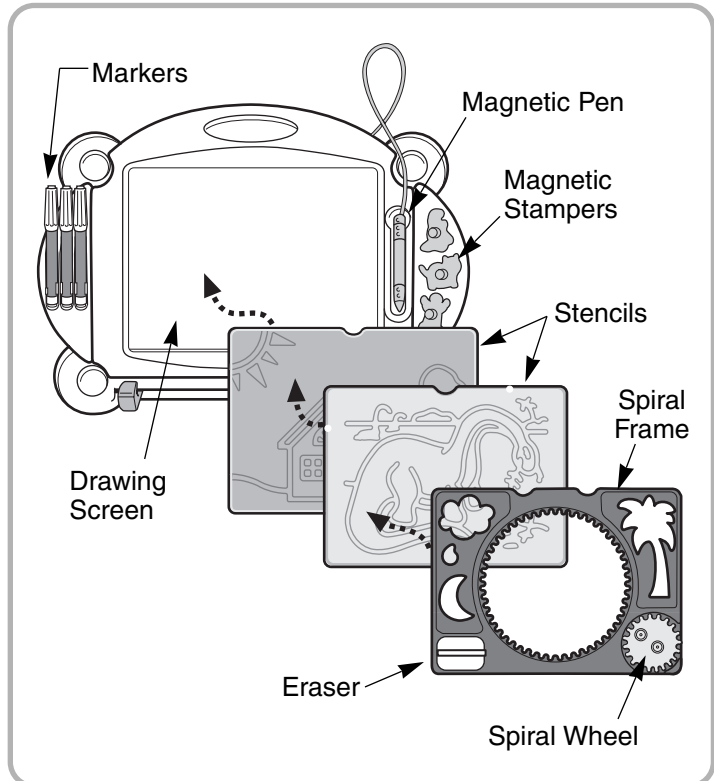
IMPORTANT! To completely remove any marker residue from the drawing surface, wipe it with a damp cloth after each use. Marker images left on the drawing surface for extended periods of time should also be removed this way.

Fisher-Price® dry-erase markers are non-toxic and safe for use by children.

Hint: To remove markings from skin, simply use soap and water.

- Use only Fisher-Price dry-erase markers with this product. Never use regular or permanent markers because they cannot be erased and will damage the drawing surface.
- Never use Fisher-Price dry-erase markers on any other surfaces. Markings from Fisher-Price dry-erase markers may not erase from porous surfaces such as cloth, unfinished wood, matte finish paint, wallpaper, vinyl, etc.
- Be sure to replace the cap tightly on Fisher-Price dry-erase markers to prevent them from drying out when not in use.

Storage



- Replace the magnetic pencil in the slot on the right side of the Magna Doodle® + Color.
- Fit the Fisher-Price dry-erase markers into the left side of the Magna Doodle + Color.
- Fit the magnetic stampers into the right side of the Magna Doodle + Color.
- Place both large stencils on the drawing screen.
- Snap the spiral frame into the drawing screen.
- Fit the eraser and spiral wheel into the spiral frame.



Do not apply heavy pressure or force to the drawing screen. Heavy pressure is not necessary and could damage the drawing screen. A light touch makes a black line.



Use only the special, fine line pen and Fisher-Price® dry eraser markers included. Do not use any other object on the drawing screen.

Questions? We'd like to hear from you!

Call Fisher-Price® Consumer Relations, toll-free at **1-800-432-KIDS**, 8 AM - 6 PM EST Monday through Friday. Hearing-impaired consumers using TTY/TDD equipment, please call 1-800-382-7470. Or, write to: Fisher-Price® Consumer Relations, 636 Girard Avenue, East Aurora, New York 14052.

CANADA, Mattel Canada Inc., 6155 Freemont Blvd., Mississauga, Ontario L5R 3W2. Questions? 1-800-567-7724. **GREAT BRITAIN**, Mattel U.K., Ltd., Helpline: 01628 500303. **AUSTRALIA**, Mattel Australia Pty. Ltd., 658 Church Street, Locked Bag #870, Richmond, Victoria 3121 Australia. Consumer Advisory Service 1-800-800-812 (valid only in Australia).

www.fisher-price.com