



Model Number 77149



- Please keep these instructions for future reference.
- Requires four "C" (LR14) batteries for the RC snake and one 9 volt (6LR61) alkaline battery for the remote (not included).
- Adult assembly is required.
- Tool needed for battery installation: Phillips screwdriver (not included).

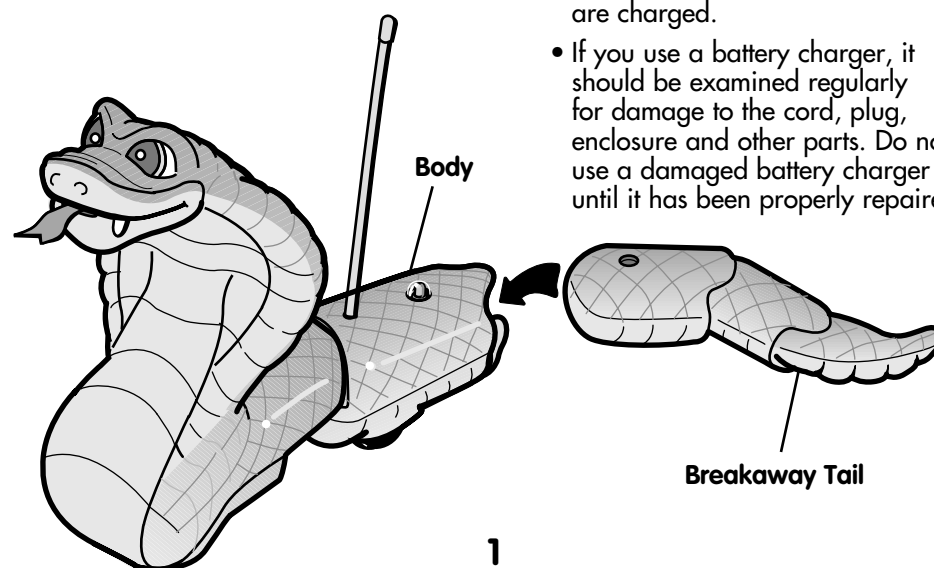
Fisher-Price®

ASSEMBLY

- Insert and "snap" the breakaway tail into the RC snake's body.
- **Hint:** The RC snake's breakaway tail may detach from the body during play. If this happens, simply insert and "snap" the breakaway tail into the body.

BATTERY TIPS

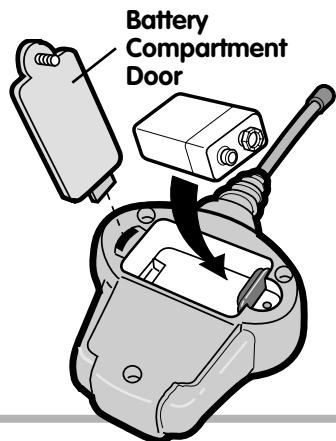
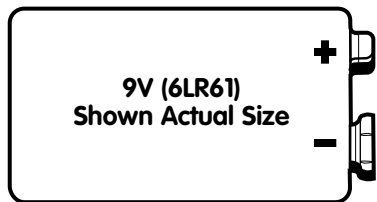
- Do not mix old and new batteries.
- Do not mix different types of batteries: alkaline, standard (carbon-zinc) or rechargeable (nickel-cadmium).
- Remove the batteries during long periods of non-use. Always remove exhausted batteries from the toy. Battery leakage and corrosion can damage this toy. Dispose of battery(ies) safely.
- Never short circuit the battery terminals.
- Non-rechargeable batteries are not to be recharged.
- Only batteries of the same or equivalent type as recommended in the "Battery Installation" instructions are to be used.
- If removable rechargeable batteries are used, they are only to be charged under adult supervision.
- Rechargeable batteries are to be removed from the toy before they are charged.
- If you use a battery charger, it should be examined regularly for damage to the cord, plug, enclosure and other parts. Do not use a damaged battery charger until it has been properly repaired.



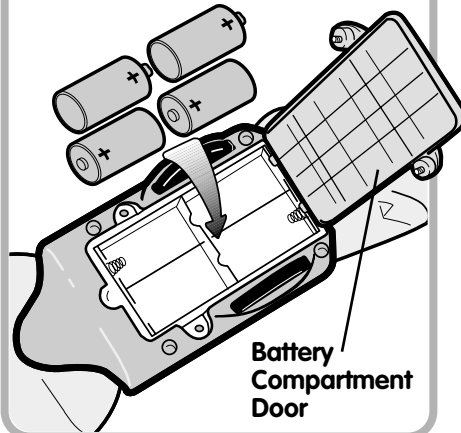
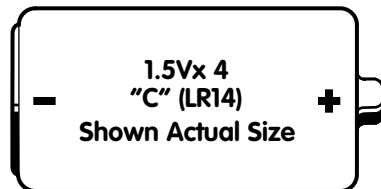
BATTERY INSTALLATION

- **Hint:** The 9 volt (6LR61) battery in the remote has a longer life than the "C" batteries in the RC snake. You may need to change the "C" batteries more often than the 9 volt battery.
- When you notice that the RC snake does not respond to the remote, try replacing the batteries in the RC snake before replacing the batteries in the remote.
- When the RC snake stops working or works erratically, it's time for an adult to replace the batteries!

REMOTE



RC SNAKE



- Locate the battery compartment on the bottom of the remote and bottom of the RC snake.
- Loosen the screw in each battery compartment door with a Phillips screwdriver. Lift to remove each door. (The screw will remain in each door.)
- Snap the battery into the battery contacts, as indicated inside the battery compartment. Insert the batteries into the battery compartment, as indicated inside the battery compartment.
- Replace each battery compartment door and tighten each screw with a Phillips screwdriver. Do not over-tighten.

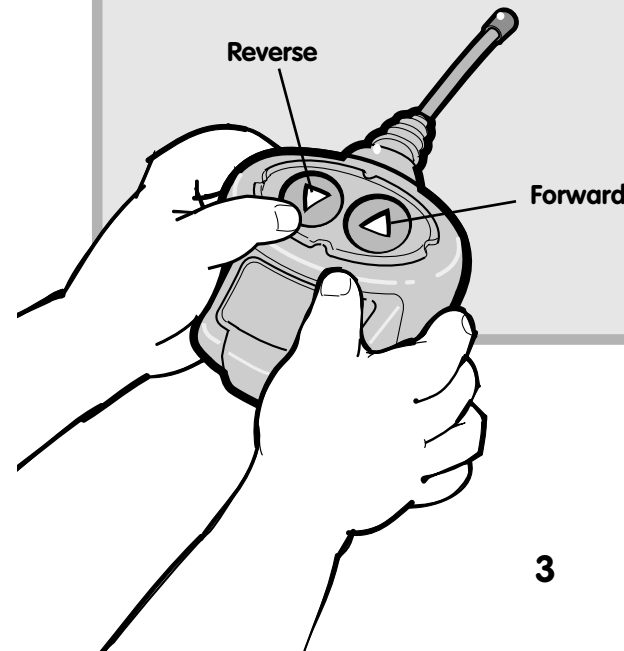
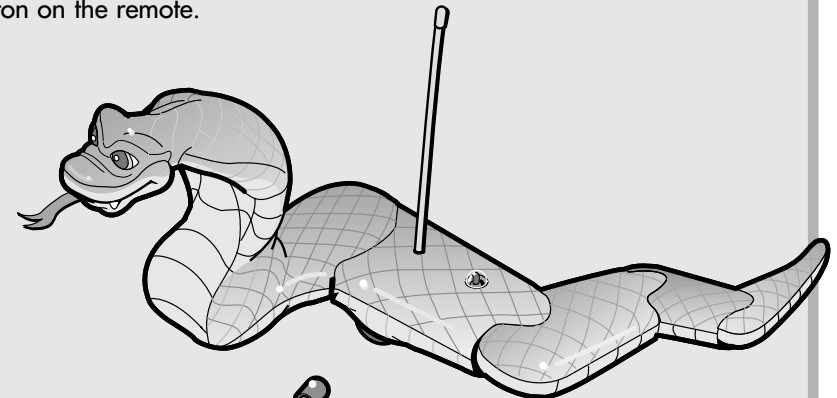
USING THE REMOTE

⚠ CAUTION

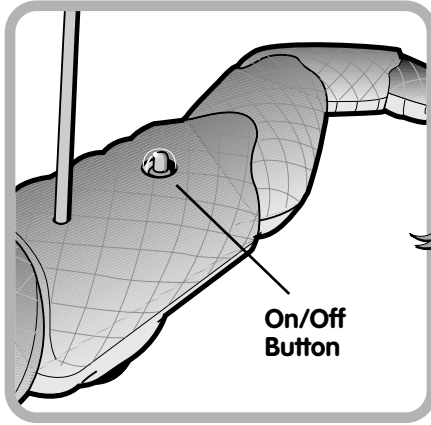
To prevent entanglement, keep hair away from wheels.

Play Safely! Do not operate RC snake in the street.

- **FORWARD:** Press and hold the right button on the remote.
- **REVERSE:** Press and hold the left button on the remote.

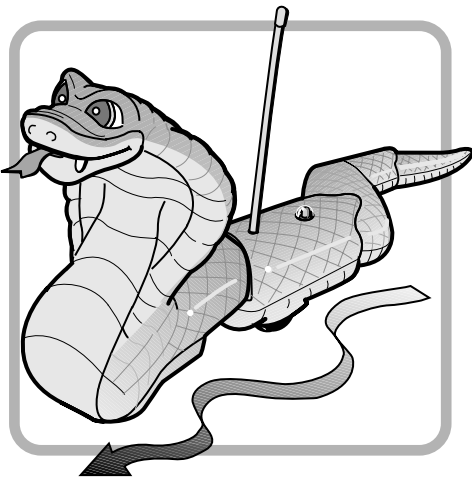


LET'S GO



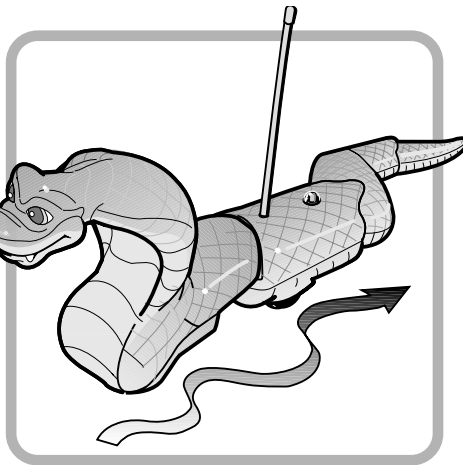
- Press the on/off button to turn the RC snake on or off.

Note: The button lights up when power is on.



To move Forward:

- Point the remote at the RC snake. Press and hold the forward button.
- As Slithering Jake™ slithers forward, his tongue moves in and his eyes light up!



To move Backward:

- Point the remote at the RC snake. Press and hold the reverse button.
- Slithering Jake™ strikes, coils back into a circle and turns. Watch his tongue as he strikes!

To change direction:

- Point the remote at the RC snake. Press and hold the reverse button. Slithering Jake™ coils back into a circle and turns.
- When Slithering Jake™ is facing the direction you want to go, press and hold the forward button on the remote.

IMPORTANT NOTES

- The RC snake works best on smooth, hard surfaces. We do not recommend use on grass, loose dirt or wet surfaces.
- For best performance, make sure the transmitter and the receiver are in direct line of sight, free of obstacles.
- If the RC snake operates erratically or does not respond to the remote, move the RC snake closer to the remote. If the RC snake still fails to respond to the remote, it's probably time for an adult to replace the batteries.
- In the unlikely event that use of the remote interferes with normal use of other remote controlled equipment, such as televisions and stereos, or use of other electric or battery powered appliances interfere with operation of the RC snake, do not use both appliances at the same time.

CARE

- Do not lift up or carry the RC snake or remote by the antenna.
- Do not leave the remote face down or in a drawer or toy box. Light pressure on the remote buttons can activate the remote and drain the batteries.
- To clean, wipe all parts with a damp cloth. Never immerse the remote or the RC snake.

FCC NOTE (UNITED STATES ONLY)

Slithering Jake™ the RC Snake®

Model Number: 77149

This device complies with part 15 of the FCC Rules. Operation is subject to the following two conditions: (1) This device may not cause harmful interference and (2) this device must accept any interference received, including interference that may cause undesired operation.

Slithering Jake™ the RC Snake®

Consumer Affairs Department
636 Girard Avenue
East Aurora, New York 14052

This device generates and uses radio frequency and if not used properly, may cause interference to radio and television reception. It has been tested and found to comply with the limits set by the FCC, which are designed to provide reasonable protection against such interference.

Caution: FCC Regulations state that changes or modifications to this product not expressly approved by the party responsible for compliance may void the user's authority to operate the equipment.

ONE YEAR LIMITED WARRANTY

Fisher-Price, Inc. 636 Girard Avenue, East Aurora, New York 14052 warrants to the original owner that the Slithering Jake™ the RC Snake® is free from all defects in material and workmanship when used under normal conditions for a period of one (1) year from date of purchase.

Should the product fail to perform properly, we will repair or replace it at our option, free of charge. Purchaser is responsible for shipping the product to Fisher-Price Consumer Affairs at the address indicated above and for all associated freight and insurance cost. Fisher-Price will bear the cost of shipping the repaired or replaced items to you. This warranty is void if the owner repairs or modifies the product. This warranty excludes any liability other than that expressly stated above, including, but not limited to, any incidental or consequential damages.

SOME STATES DO NOT ALLOW THE EXCLUSION OR LIMITATION OF INCIDENTAL OR CONSEQUENTIAL DAMAGES, SO THE ABOVE LIMITATION OR EXCLUSION MAY NOT APPLY TO YOU.

THIS WARRANTY GIVES YOU SPECIFIC LEGAL RIGHTS, AND YOU MAY ALSO HAVE OTHER RIGHTS WHICH MAY VARY FROM STATE TO STATE.



- Meets requirements of Council Directives - 99/5/EC, 89/336/EEC, 88/378/EEC
- Suitable for use in all EC member states



Questions? We'd like to hear from you!

Call Fisher-Price® Consumer Affairs, toll-free at **1-800-432-KIDS**, 8 AM - 6 PM EST Monday through Friday. Hearing-impaired consumers using TTY/TDD equipment, please call 1-800-382-7470. Or, write to: Fisher-Price® Consumer Affairs, 636 Girard Avenue, East Aurora, New York 14052.

CANADA, Mattel Canada Inc., 6155 Freemont Blvd., Mississauga, Ontario L5R 3W2.
Questions? 1-800-567-7724. **GREAT BRITAIN**, Mattel U.K., Ltd., Helpline: 01628 500303.
AUSTRALIA, Mattel Australia Pty. Ltd., 658 Church Street, Locked Bag #870, Richmond, Victoria 3121 Australia.
Consumer Advisory Service 1-800-800-812 (valid only in Australia).

www.fisher-price.com

Fisher-Price, Inc., a subsidiary of Mattel, Inc., East Aurora, NY 14052 U.S.A.
©2000 Mattel, Inc. All Rights Reserved. ® and ™ designate U.S. trademarks of Mattel, Inc.