



Rescue Fire Truck

Instructions

Product Number 77455



(Figures sold separately. Product features and decoration may vary from the picture above.)

Please save these instructions for future reference.

Adult assembly is required.

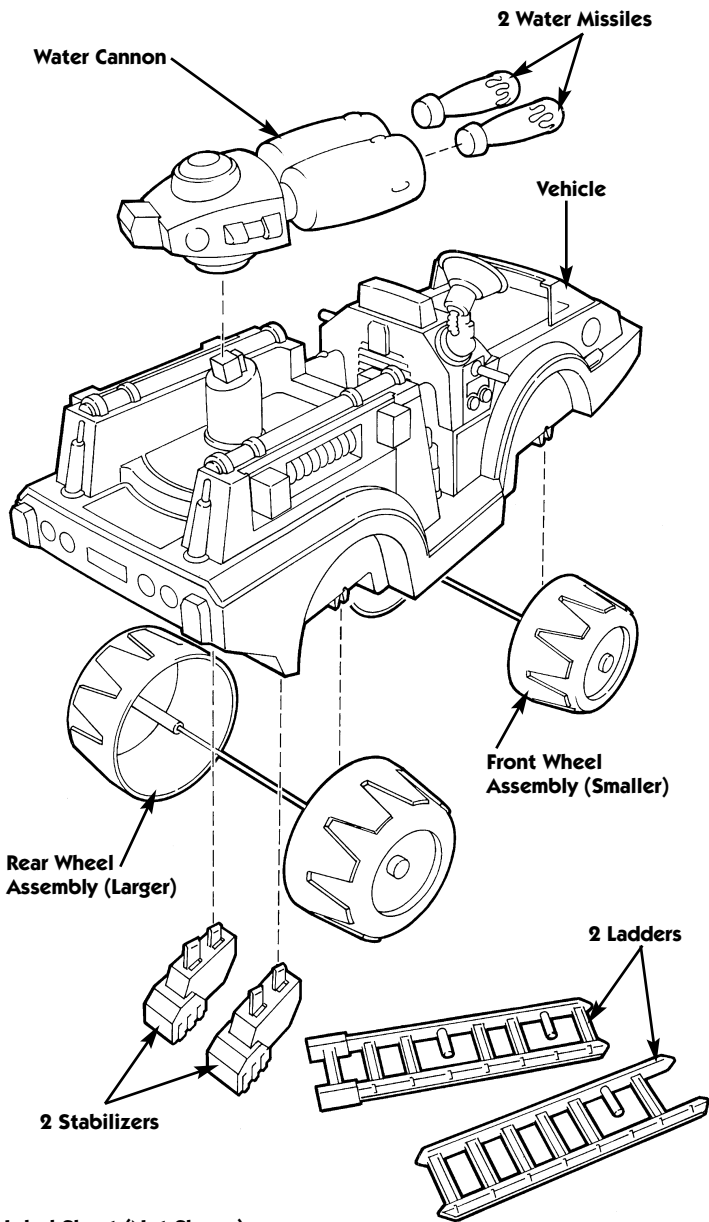
Requires four "C" (LR14) alkaline batteries for operation (not included).

Tool required for battery installation: Phillips screwdriver (not included).

This toy is not intended to be used in water.



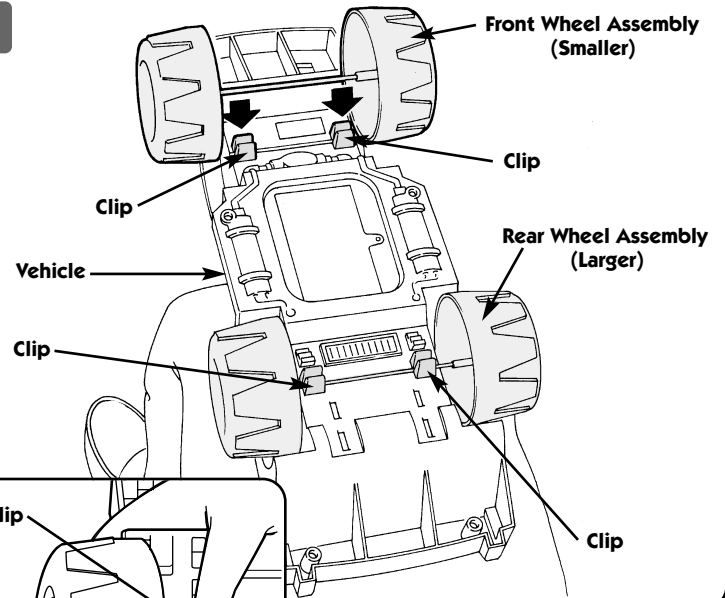
Parts



Label Sheet (Not Shown)

One-Time Assembly

1



- Position the vehicle upside-down on your lap.
- Insert and snap the front wheel assembly (smaller) into the clips in the front end of the vehicle.

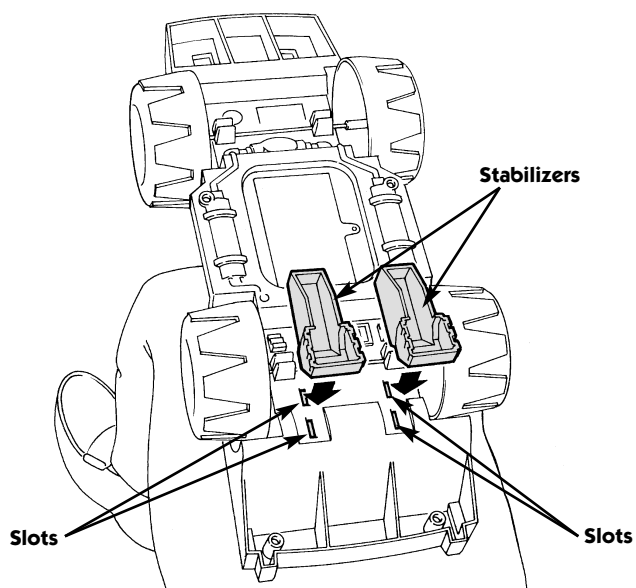
- Insert and snap the rear wheel assembly (larger) into the clips in the back end of the vehicle.

Hint:

Since inserting the wheel assembly axles requires a lot of force, we recommend that you press one side of each clip while inserting the wheel assembly axles. This makes it easier to insert the wheel assembly axles.

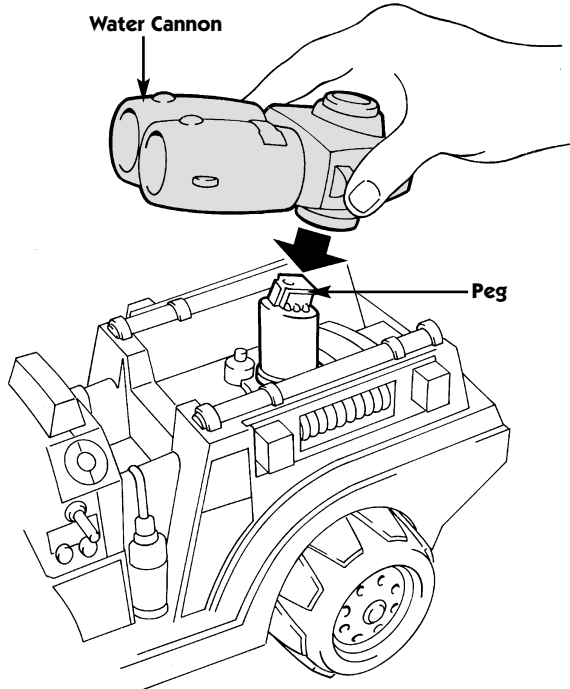
- Pull up on the wheel assemblies to be sure they are secure.

2



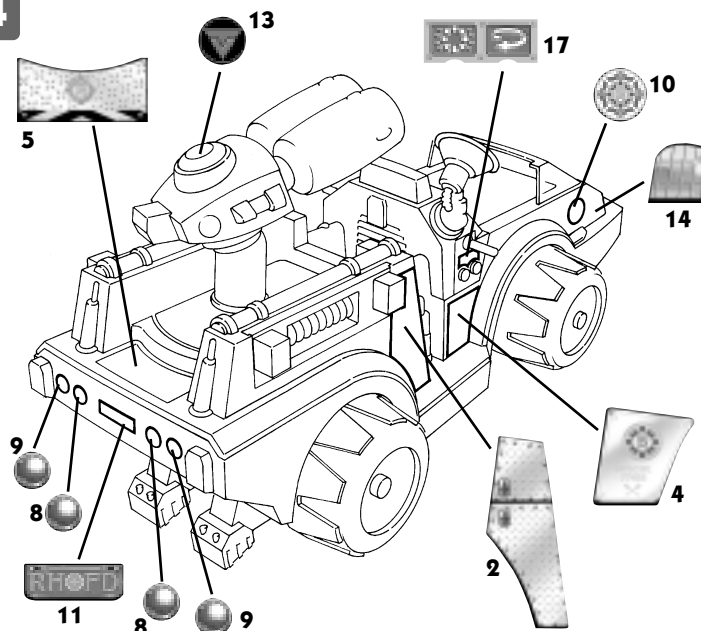
- Position the stabilizers so that the squared ends are toward the back end of the vehicle.
- Insert and snap the tabs on the stabilizers into the slots near the back end of the vehicle.
- Pull up on the stabilizers to be sure they are secure.

3

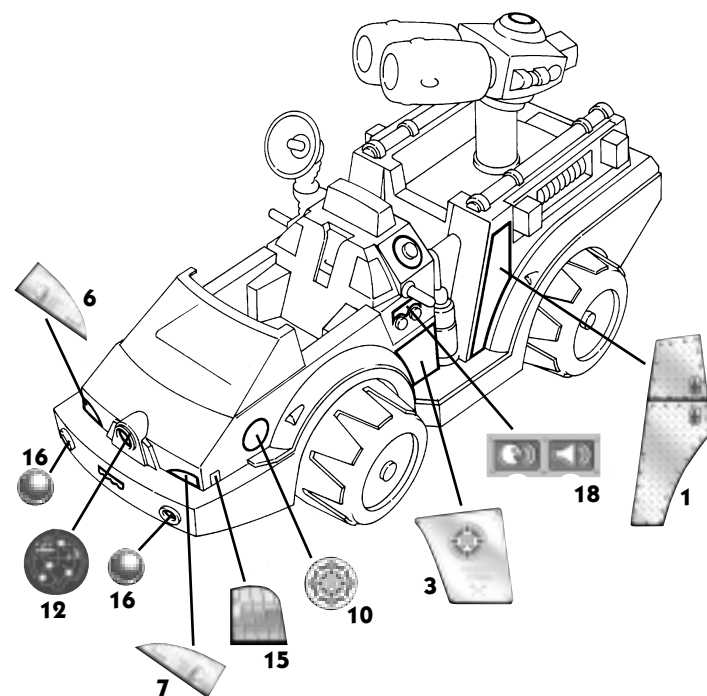


- Turn the vehicle upright on a flat surface.
- Fit the water cannon to the peg on the vehicle. **Make sure you hear a "snap".**

4



Rear Right Side View



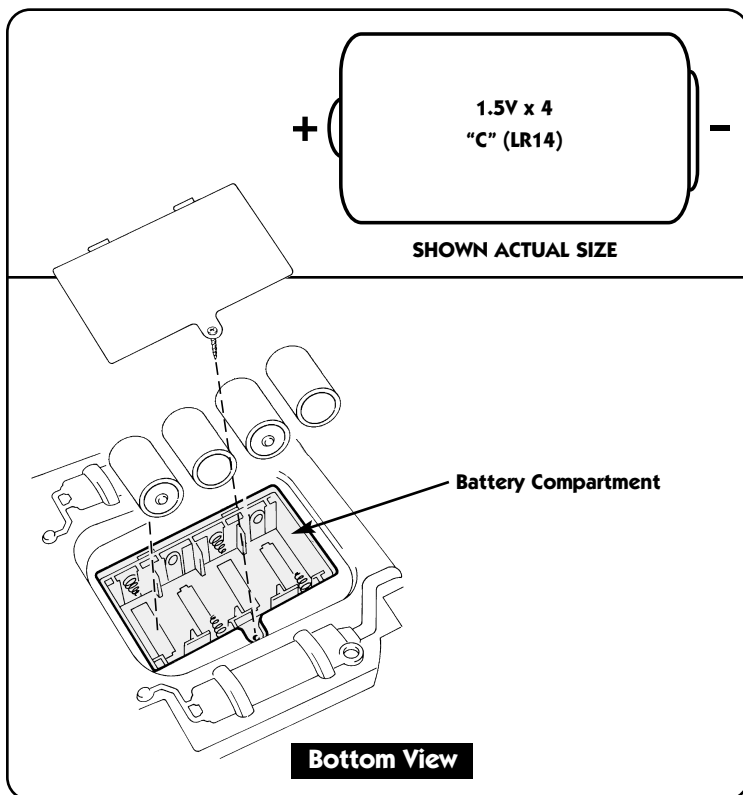
Front Left Side View

Proper label application will help to keep the labels looking their best.

- Wash your hands before applying the labels.
- Make sure the areas where the labels will be applied are clean and dry. Wipe this toy with a clean, soft, dry cloth to remove any dust or oils.
- For best results, do not attempt to apply a label more than once.
- Apply the labels as shown in the illustrations.

Battery Installation

Hint: We recommend the use of alkaline batteries for longer battery life!



- Loosen the screw in the battery compartment door with a Phillips screwdriver.
- Remove the battery compartment door.
- Insert four "C" (LR14) alkaline batteries, as indicated in the battery compartment.
- Replace the battery compartment door and tighten the screw with a Phillips screwdriver. Do not over-tighten.

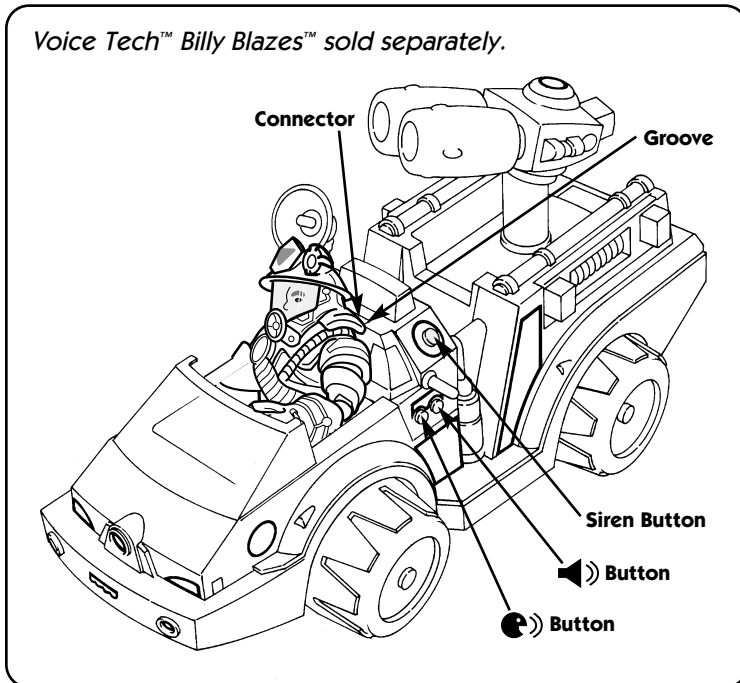
Battery Tips

- Do not mix old and new batteries.
- Do not mix different types of batteries: alkaline, standard (carbon-zinc) or rechargeable (nickel-cadmium).
- Remove the batteries during long periods of non-use. Always remove exhausted batteries from the toy. Battery leakage and corrosion can damage this toy. Dispose of batteries safely.
- Never short circuit the battery terminals.
- Non-rechargeable batteries are not to be recharged.
- Only batteries of the same or equivalent type as recommended in the Battery Installation instructions are to be used.
- If removable rechargeable batteries are used, they are only to be charged under adult supervision.
- Rechargeable batteries are to be removed from the toy before they are charged.
- If you use a battery charger, it should be examined regularly for damage to the cord, plug, enclosure and other parts. Do not use a damaged battery charger until it has been properly repaired.

To the rescue

Hint: Make daring rescues even more thrilling with a Voice Tech™ Rescue Heroes™ figure (sold separately).

Voice Tech™ Billy Blazes™ sold separately.



- Be sure to remove the backpack from the Voice Tech™ Rescue Heroes™ figure.
- Slide the connector on the back of the figure into the groove in the fire truck cab seat back.
- Press the button on the fire truck (🔊) for one of several phrases from your Rescue Heroes™ figure. The fire truck "recognizes" which Voice Tech™ Rescue Heroes™ is in the cab! **"Billy Blazes™ here. No one gets left behind."** (Voice Tech™ Billy Blazes™ sold separately.)

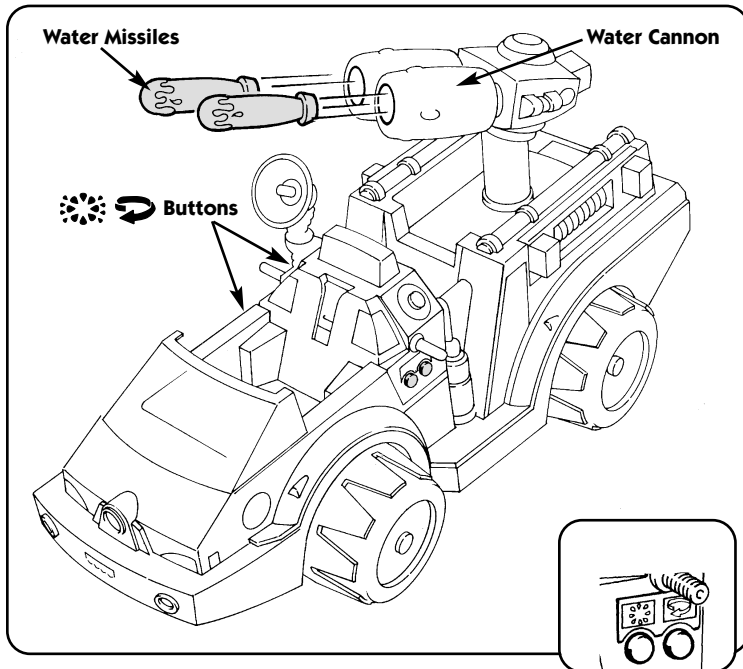
Hint: If a Voice Tech™ Rescue Heroes™ figure is not inserted into the cab, pressing the button on the side of the fire truck will result only in horn sounds.

- Press 🔊 button on the side of the fire truck for truck sounds and lights.
- Press the siren button for siren sounds and emergency lights.

Let's Put the Fire Out

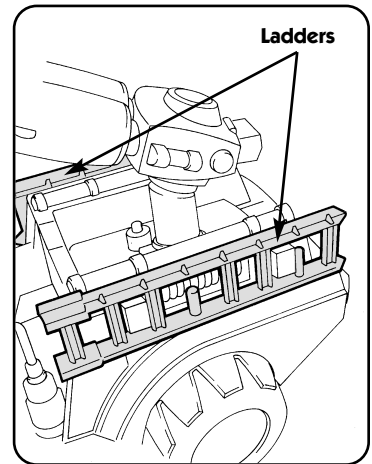
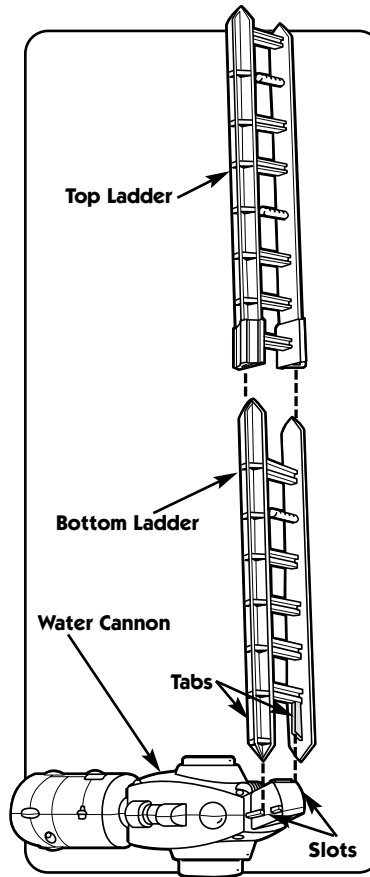
⚠ CAUTION

- Only use the projectiles (water missiles) supplied with this toy.
- Do not fire at people or animals.



- Fit the water missiles into the water cannon. Press the water missiles until the spring cocks.
- Press the button to turn the water cannon toward the target area.
- Press the button to launch the water missile.

Ladder Up...



- Hang the ladders on the side of the fire truck when not in use.
- Fit the bottom ladder tabs into the slots on the back of the water cannon.
- Fit the top ladder to the bottom ladder.

One (1) Year Limited Warranty

Fisher-Price, Inc., 636 Girard Avenue, East Aurora, New York 14052 warrants that Voice Tech™ Rescue Heroes™ Fire Truck is free from all defects in material and workmanship when used under normal conditions for a period of one (1) year from the date of purchase. Should the product fail to perform properly, we will repair or replace it at our option, free of charge. Purchaser is responsible for shipping the product to Consumer Relations at the address indicated above and for all associated freight and insurance cost. Fisher-Price, Inc. will bear the cost of shipping the repaired or replaced item to you. This warranty is void if the owner repairs or modifies the product. This warranty excludes any liability other than that expressly stated above including but not limited to any incidental or consequential damages.

SOME STATES DO NOT ALLOW THE EXCLUSION OR LIMITATION OF INCIDENTAL OR CONSEQUENTIAL DAMAGES, SO THE ABOVE LIMITATION OR EXCLUSION MAY NOT APPLY TO YOU.

THIS WARRANTY GIVES YOU SPECIFIC LEGAL RIGHTS, AND YOU MAY ALSO HAVE OTHER RIGHTS WHICH MAY VARY FROM STATE TO STATE.

FCC Note (United States Only)

Note: This equipment has been tested and found to comply with the limits for a Class B digital device, pursuant to Part 15 of the FCC Rules. These limits are designed to provide reasonable protection against harmful interference in a residential installation. This equipment generates, uses and can radiate radio frequency energy and, if not installed and used in accordance with the instructions, may cause harmful interference to radio communications. However, there is no guarantee that interference will not occur in a particular installation. If this equipment does cause harmful interference to radio or television reception, which can be determined by turning the equipment off and on, the user is encouraged to try to correct the interference by one or more of the following measures:

- Reorient or relocate the receiving antenna.
- Increase the separation between the equipment and receiver.
- Consult the dealer or an experienced radio/TV technician for help.

Care

- If sound or lights become faint or stop, it's time for an adult to replace the batteries!
- Wipe this toy with a clean cloth dampened with a mild soap and water solution. Do not immerse this toy.
- This toy has no consumer serviceable parts. Do not take this toy apart.

Consumer Information

Call Fisher-Price® Consumer Relations, toll-free at **1-800-432-KIDS**, 8 AM - 6 PM EST Monday through Friday. Hearing-impaired consumers using TTY/TDD equipment, please call 1-800-382-7470. Or, write to: Fisher-Price® Consumer Relations, 636 Girard Avenue, East Aurora, New York 14052.

Collect the Voice Tech™ team for exciting interaction!

Voice Tech™ Rescue Heroes interact with Voice Tech™ Fire Truck and Jet! (Each sold separately.)

