



Jake Justice™

Police Officer



Model Number: 78439

Please keep this instruction sheet for future reference,
as it contains important information.

Requires two "AA" batteries (included).

Adult assembly is required for battery replacement.

Tool required for battery replacement:

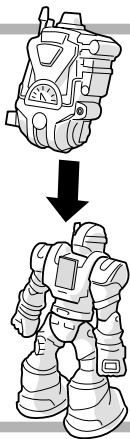
Phillips screwdriver (not included).

Fisher-Price®

www.rescueheroes.com

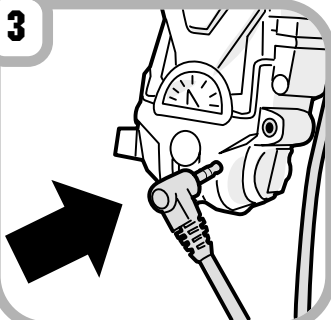
ATTACHING THE BACKPACK AND THE TOOL ARM

1



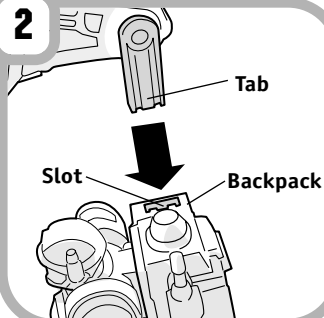
- Slide the backpack onto the connector on back of the figure as shown.

3



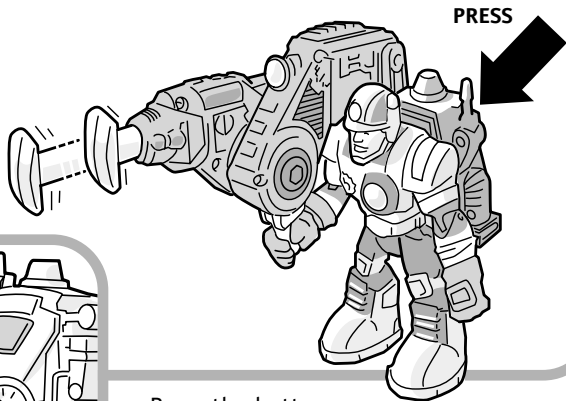
- Insert the plug from the tool arm into the socket in the backpack.

2



- Slide the tab on the tool arm into the slot on top of the backpack.

TAKING RESCUE POWER TO THE MAX!

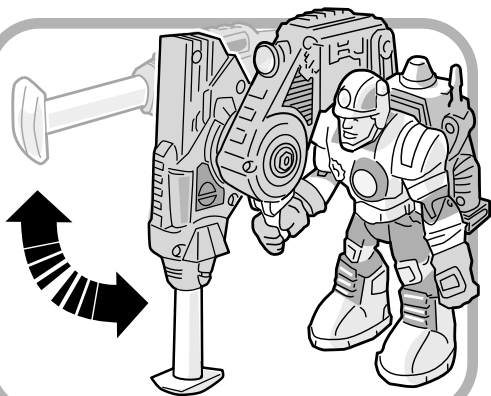


- Press the button on the backpack to activate the battering ram!

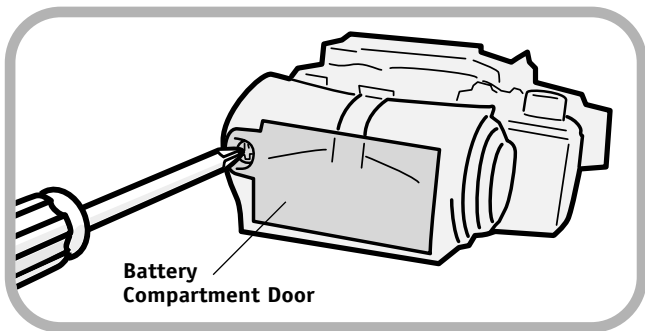


Back View

- Adjust the battering ram to either a horizontal or vertical position. It will “click” in place.



BATTERY REPLACEMENT



- Locate the battery compartment door on the bottom of the backpack.
- Loosen the screw in the battery compartment door with a Phillips screwdriver. Remove the battery compartment door.
- Insert two new “AA” **alkaline** batteries, as indicated inside the battery compartment.

*Hint: We recommend using **alkaline** batteries for longer battery life.*

- Replace the battery compartment door and tighten the screw with a Phillips screwdriver. Do not over-tighten.
- When actions on this toy become slow or stop, it’s time for an adult to change the batteries!

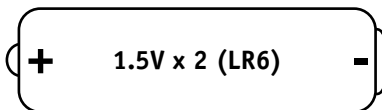
CARE

- Wipe the toy with a clean cloth dampened with a mild soap and water solution.
- Do not immerse the toy.

Fisher-Price, Inc., a subsidiary of Mattel, Inc. East Aurora, New York 14052, U.S.A.
©2002 Mattel, Inc. All Rights Reserved. ® and ™ designate U.S. trademarks of Mattel, Inc.

BATTERY TIPS

For best results, use only alkaline batteries.



SHOWN ACTUAL SIZE

- Do not mix old and new batteries.
- Do not mix different types of batteries: alkaline, standard (carbon-zinc) or rechargeable (nickel-cadmium).
- Remove the batteries during long periods of non-use. Always remove exhausted batteries from the toy. Battery leakage and corrosion can damage this toy. Dispose of batteries safely.
- Do not dispose of batteries in a fire. The batteries may explode or leak.
- Never short circuit the battery terminals.
- Non-rechargeable batteries are not to be recharged.
- Only batteries of the same or equivalent type as recommended in the "Battery Replacement" instructions are to be used.
- If removable rechargeable batteries are used, they are only to be charged under adult supervision.
- Rechargeable batteries are to be removed from the toy before they are charged.
- If you use a battery charger, it should be examined regularly for damage to the cord, plug, enclosure and other parts. Do not use a damaged battery charger until it has been properly repaired.

GET THE REST OF TEAM POWERMAX™!

Each sold separately and subject to availability.



PowerMax™
Billy Blazes™

Firefighter
78369



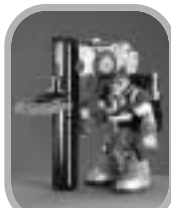
PowerMax™
Jack Hammer™

Construction Expert
78370



PowerMax™
Rocky Canyon™

Mountain Hero
78371



PowerMax™
Matt Medic™

Physician
78500



U.R.V.™
Ultimate
Robotic Vehicle™ (U.R.V.)

78362

Questions? We'd like to hear from you!

Call Fisher-Price® Consumer Relations, toll-free at **1-800-432-KIDS**,
8 AM - 6 PM EST Monday through Friday. Hearing-impaired consumers using
TTY/TDD equipment, please call 1-800-382-7470. Or, write to:
Fisher-Price® Consumer Relations, 636 Girard Avenue,
East Aurora, New York 14052.

For other countries, outside the United States: **Canada:** call **1-800-567-7724**, or write to:
Mattel Canada Inc., 6155 Freemont Blvd., Mississauga, Ontario L5R 3W2.

Great Britain: telephone 01628 500302.

Australia: Mattel Australia Pty. Ltd., 658 Church Street, Locked Bag #870, Richmond,
Victoria 3121 Australia. Consumer Advisory Service 1300 135 312.

New Zealand: 16-18 William Pickering Drive, Albany 1331, Auckland.