

**Fisher-Price®**

# Roll 2 Pro Scooter

Product Numbers: 78558, 76927



## **Beginner**

with training wheels



## **Advanced**

without training wheels

(Helmet, wrist guards and protective pads not included.)

**Please keep this instruction sheet for future reference,  
as it contains important information.**

**Adult assembly is required.**

**Tool needed for assembly: One Allen Wrench (included)  
and a Phillips Screwdriver (not included).**

**Tool needed for removal of training wheels  
Two Allen Wrenches (included).**

**Ages 5+. Weight Limit: 150 lbs. (68 kg).**

[www.fisher-price.com](http://www.fisher-price.com)



# WARNING

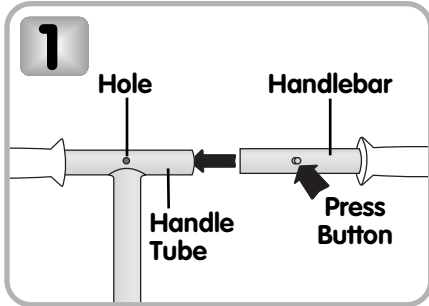
## To prevent injury:

- Keep away from cars and streets.
- Protective equipment should be worn, including helmet, wrist guards, knee pads and elbow pads.
- Never allow more than one rider.

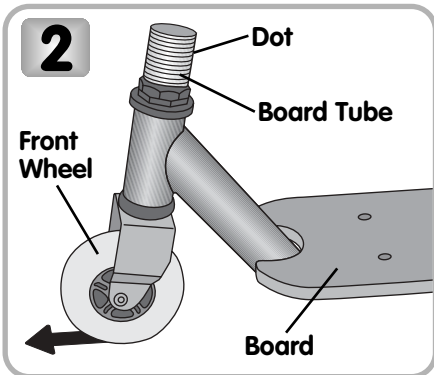
## **IMPORTANT! Please take a few moments to review the following safety tips with your rider.**

- Rider should wear shoes or sneakers that provide good support.
- Rider should not wear open-toe shoes.
- Rider should wear a helmet, knee pads, elbow pads and wrist guards to guard against bumps and bruises.
- Keep loose laces and pant legs away from the wheels.
- Adults must assist children in the initial adjustment procedures to the handlebar for proper height.
- Adults should supervise beginners.
- Choose areas for riding that are free of obstacles.
- Ride on smooth, paved surfaces away from motor vehicles.
- Avoid surfaces with water, sand, gravel, dirt, leaves, and other debris. Wet weather impairs traction, braking and visibility.
- Avoid sharp bumps, drainage grates, and sudden surface changes. Scooter may suddenly stop.
- Avoid excessive speed associated with downhill rides.
- Never ride on streets, roadways and driveways which enter vehicle traffic routes.
- Towing riders with bicycles or cars is unsafe.
- Never ride at night.
- Avoid colliding with pedestrians.

# Assembly

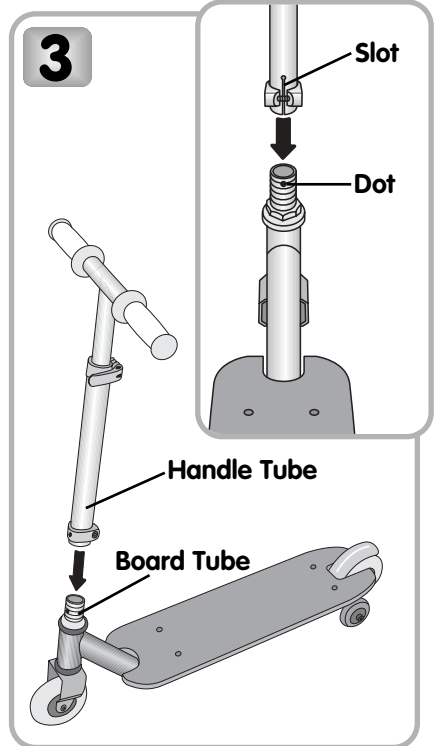


- While pressing the button on the handlebar, insert it into the end of the handle tube.
- Push the handlebar into the handle tube until the button "clicks" into the hole in the handle tube.
- Pull on the handlebar to be sure it is secure.



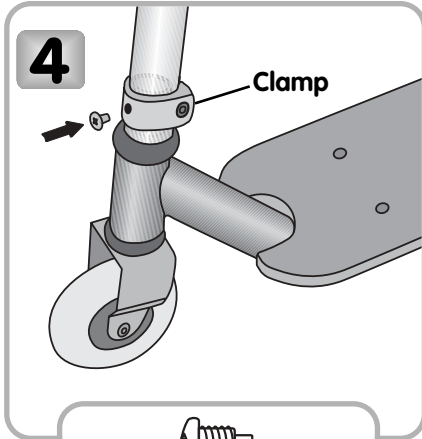
- Position the board upright on a flat surface.
- Position the front wheel so that it is aligned with the board.

**Hint:** Note the location of the colored dot on the board tube.



- Fit the handle tube onto the board tube.
- IMPORTANT!** Make sure the colored dot on the board tube is visible through the slot in the handle tube.

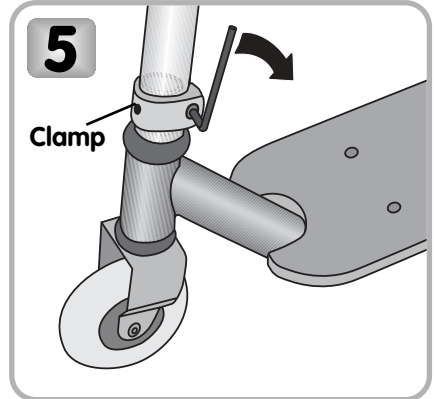
# Assembly



**M5 x 7mm Screw**

**SHOWN ACTUAL SIZE**

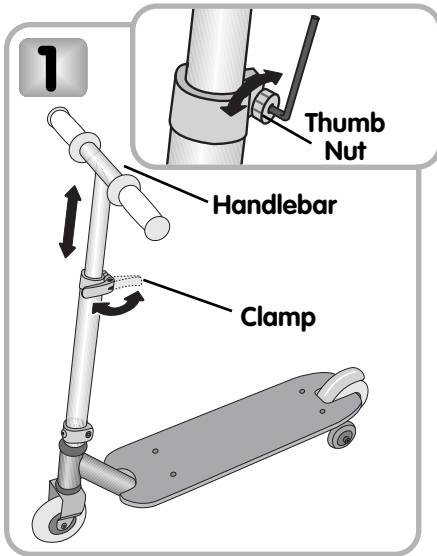
- Align the hole in the clamp and the handle tube.
- Insert the screw through the hole in the clamp and into the handle tube. Tighten the screw with a Phillips screwdriver.



- Tighten the bolt in the clamp with an Allen wrench.
- Pull the handle tube up to be sure it is secure. If it is not secure, please review assembly steps 3-5.

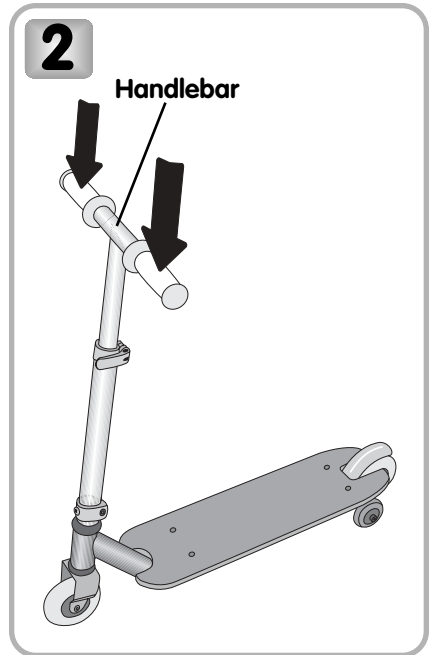
**Assembly is now complete.**

# Handle Height Adjustment



- Open the handle tube clamp to unlock the handle tube.
- Lift or lower the handle tube so that the handlebar is at a comfortable height for your child.
- Close the handle tube clamp to **lock** the handle tube in place.

**IMPORTANT!** If the handle tube clamp does not lock the handle tube in place, or, you cannot close the handle tube clamp to lock the handle tube in place, **you may need to tighten or loosen the handle tube clamp.** With the clamp opened, rotate the thumb nut, as necessary, to tighten or loosen the clamp. Or, tighten the clamp by inserting an Allen wrench (included) into the thumb nut and tighten. Be sure to close the handle tube clamp to **lock** the handle tube in place.



- Push down on the handlebar to be sure the handlebar tube is **locked** in place.

**IMPORTANT!** If the handlebar tube moves, please refer back to step 1 on this page to be sure you **lock** the handle tube in place.



## WARNING

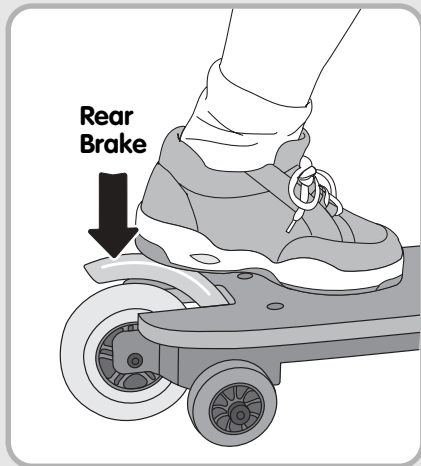
### To prevent injury:

- Keep away from cars and streets.
- Protective equipment should be worn, including helmet, wrist guards, knee pads and elbow pads.
- Never allow more than one rider.

## Beginner

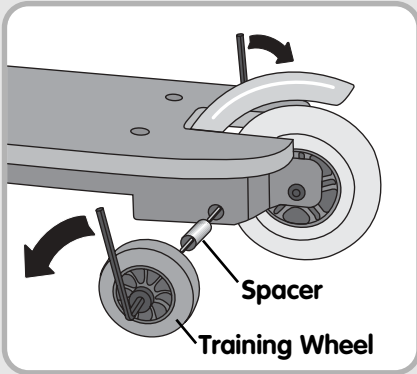


- Make sure your rider stands in the middle of the board.



- **To stop the scooter**, your child should press down with one foot on the rear brake, as shown.

# Advanced

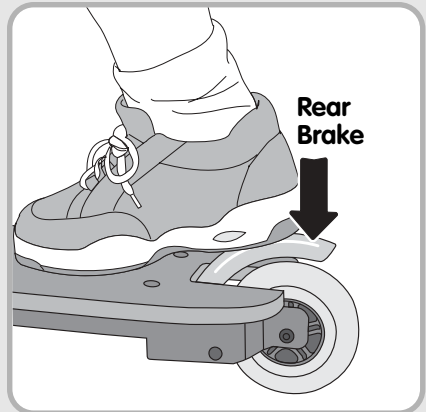


**For advanced use, remove the training wheels!**

- While holding one training wheel in place with an Allen wrench, loosen the other training wheel with another Allen wrench. Remove the training wheels and all hardware: (2) wheel bushings, (2) spacers, (1) barrel nut and (1) barrel screw.
- Store the training wheels and hardware in a safe place for future use.



- Make sure your rider stands in the middle of the board.



- **To stop the scooter**, your child should press down with one foot on the rear brake, as shown.

# Care

- Periodically inspect this product for wear or damage. Check all nuts and bolts and tighten as required.
- Check the plastic parts regularly and if broken or cracked, dispose of them properly.
- To clean, use a mild soap and water solution and clean cloth. Rinse clean with water to remove soap residue.

# Consumer Information

## Questions? We'd like to hear from you!

If you have any questions about this product, please call Fisher-Price® Consumer Relations, toll-free at **1-800-432-KIDS (5437)**, 8 AM - 6 PM EST Monday through Friday. Hearing-impaired consumers using TTY/TDD equipment, please call 1-800-382-7470. Or, write to: Fisher-Price® Consumer Relations, 636 Girard Avenue, East Aurora, New York 14052.

### For countries outside the United States:

**CANADA Questions? 1-800-567-7724.** Mattel Canada Inc., 6155 Freemont Blvd., Mississauga, Ontario L5R 3W2.

**GREAT BRITAIN** Mattel UK Ltd, Vanwall Business Park, Maidenhead SL6 4UB. Helpline: 01628 500302.

**AUSTRALIA** Mattel Australia Pty. Ltd., 658 Church Street, Locked Bag #870, Richmond, Victoria 3121 Australia. Consumer Advisory Service 1300 135 312.

**NEW ZEALAND** 16-18 William Pickering Drive, Albany 1331, Auckland.

**ASIA** Mattel East Asia Ltd, Room 1106, South Tower, World Finance Centre, Harbour City, Tsimshatsui, HK, China.