



# SOOTHING SOUNDS DELUXE BOUNCER SEAT

**Model Number: 79011**

Adult assembly is required.

Please save these instructions for future reference.

Tool needed for assembly: Phillips screwdriver (not included).

Requires three "C" (LR14) alkaline batteries (not included) in the soothing unit.



# WARNINGS



## WARNING

### **To prevent serious injury and/or falls:**

- Never use on any elevated surface.
- Never use as a carrier or lift while child is seated.
- Always use the restraint system.
- Never leave child unattended.
- Never use as a car seat.
- Never use with a child able to sit up unassisted.

# CONSUMER INFORMATION

Occasionally a consumer may experience a problem with one of our products.

If this should happen, please call us toll-free, rather than return this product to the store.

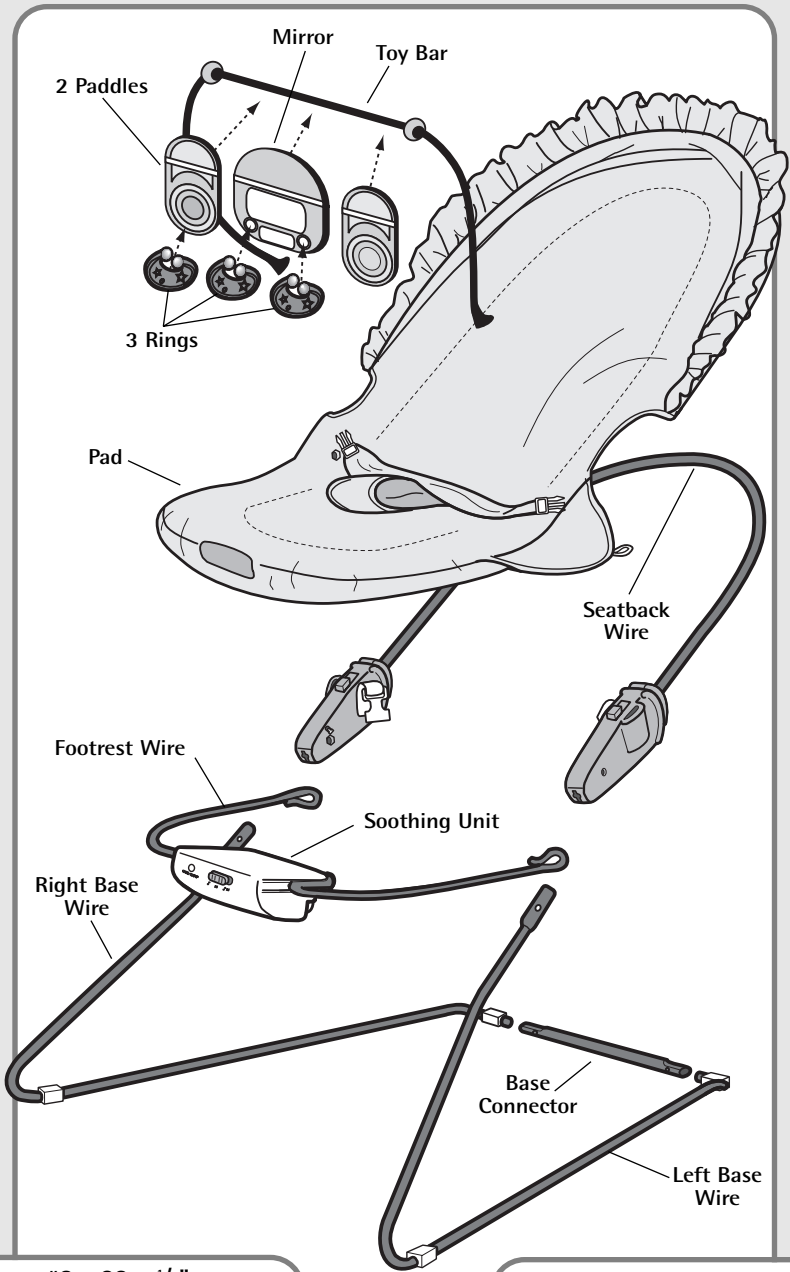
Usually, we can solve the problem over the telephone or send you replacement parts.

Please call Fisher-Price® Consumer Affairs, toll-free at **1-800-432-KIDS**, between 8 AM - 5 PM EST, Monday through Friday. Hearing-impaired consumers using TTY/TDD equipment, please call 1-800-382-7470.

Or write to:

Fisher-Price® Consumer Affairs  
636 Girard Avenue  
East Aurora, New York 14052

# PARTS



#8 - 32 x 1/2"  
Screw - 2



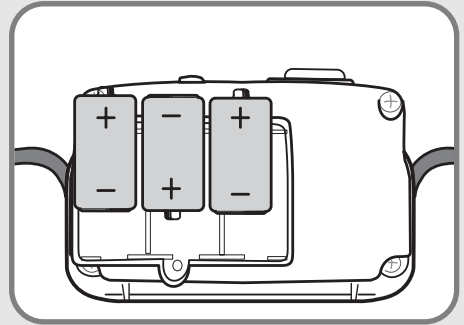
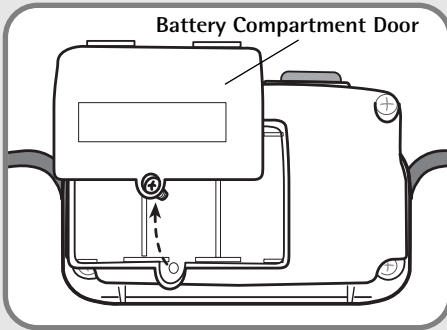
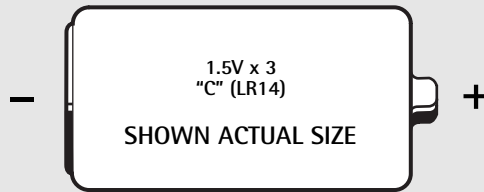
Shown Actual Size

#8 - 32 Nut - 2



Shown Actual Size

# BATTERY INSTALLATION



- Locate the soothing unit on the footrest wire.
- Loosen the screw in the soothing unit battery compartment door with a Phillips screwdriver.
- Remove the battery compartment door.
- Insert three "C" (LR14) batteries, as indicated inside the battery compartment.
- Replace the battery compartment door. Tighten the screw with a Phillips screwdriver. Do not over-tighten.

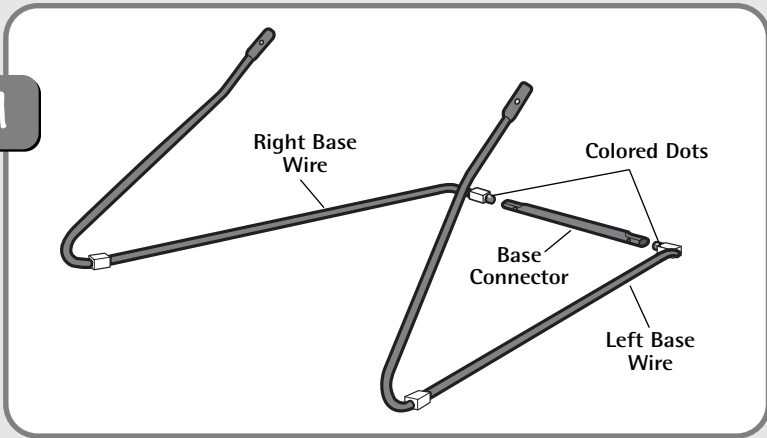
## Battery Tips

- Do not mix old and new batteries.
- Do not mix different types of batteries: alkaline, standard (carbon-zinc) or rechargeable (nickel-cadmium).
- Remove the batteries during long periods of non-use. Always remove the exhausted batteries from the product. Battery leakage and corrosion can damage the product. Dispose of the batteries safely.
- Never short circuit the battery terminals.
- Non-rechargeable batteries are not to be recharged.
- Only batteries of the same or equivalent type as recommended in the "Battery Installation" instructions are to be used.
- If removable rechargeable batteries are used, they are only to be charged under adult supervision.
- Rechargeable batteries are to be removed from the product before they are charged.
- If you use a battery charger, it should be examined regularly for damage to the cord, plug, enclosure and other parts. Do not use a damaged battery charger until it has been properly repaired.

# ASSEMBLY

## ⚠ CAUTION

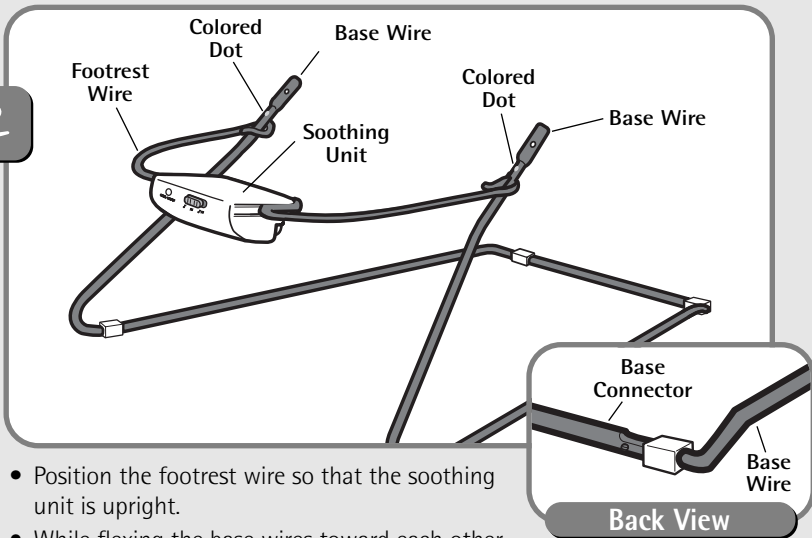
This package contains small parts.  
Adult assembly is required.



- Place the base connector on a flat surface as shown.
- Position the left and right base wires as shown. Note the locations of the colored dots on the left and right base wire.
- Fit the left base wire into the base connector.
- Fit the right base wire into the base connector.
- **Make sure both colored dots on the base wires are covered by the base connector.**

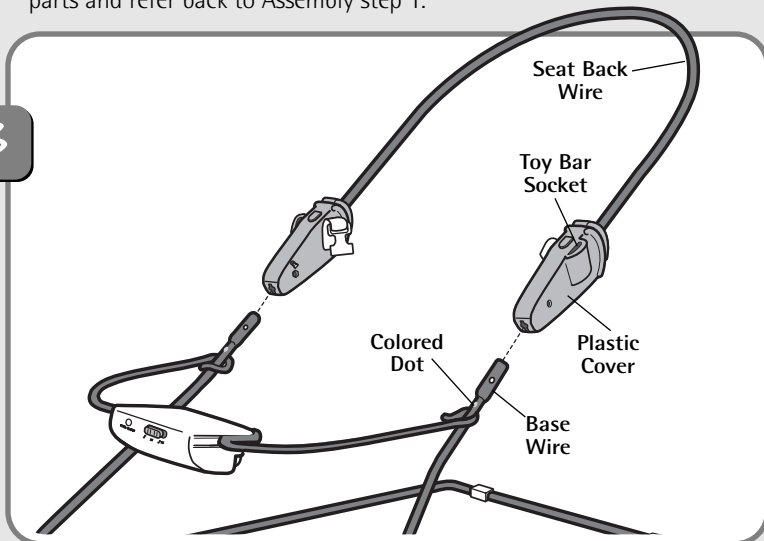
# ASSEMBLY

2



- Position the footrest wire so that the soothing unit is upright.
- While flexing the base wires toward each other, hook the footrest wire onto the ends of the base wires.
- Push the footrest wire down completely **below the colored dots** on the base wires.
- Make sure the small tabs on the left and right base wires are secure in the base connector holes (see inset). If the small tabs are not secure in the base connector holes, you have assembled the base incorrectly. Disassemble all parts and refer back to Assembly step 1.

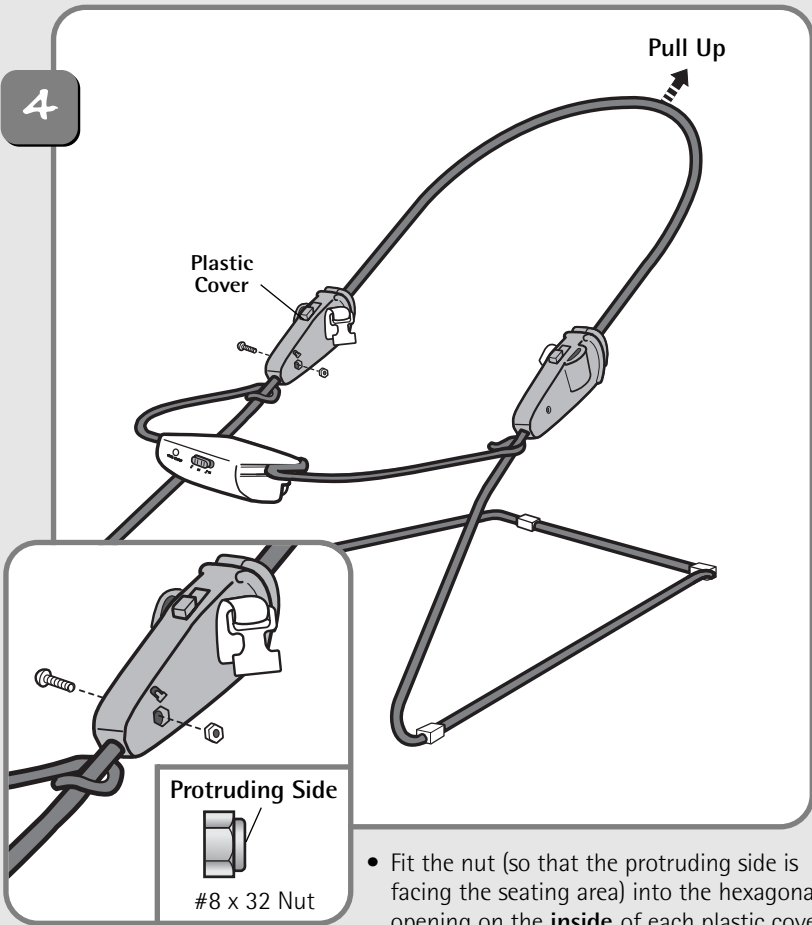
3



- Position the seat back wire **with the toy bar sockets upright**.
- Fit the seat back wire completely onto the base wires, so that each end covers the colored dot on each base wire.
- **Make sure the plastic covers on the seat back wire cover the colored dots on the base wire.**

# ASSEMBLY

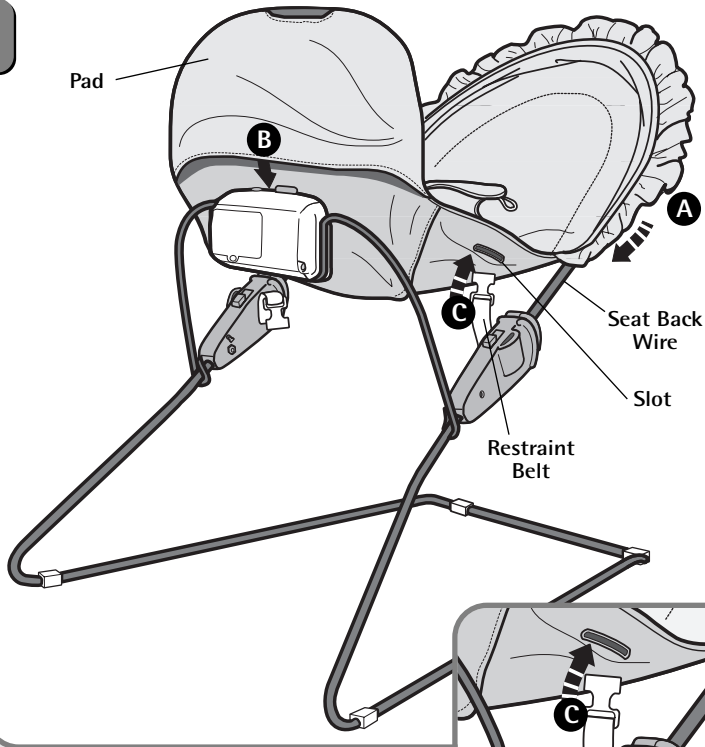
4



- Fit the nut (so that the protruding side is facing the seating area) into the hexagonal opening on the **inside** of each plastic cover.
- Insert a screw through the **outside** of each plastic cover and tighten with a Phillips screwdriver. Do not over-tighten.
- Pull up on the seat back wire to be sure it is secure. If you can remove either end of the seat back wire, you have not assembled it correctly. Remove the screws, re-read and repeat Assembly steps 3 and 4.

# ASSEMBLY

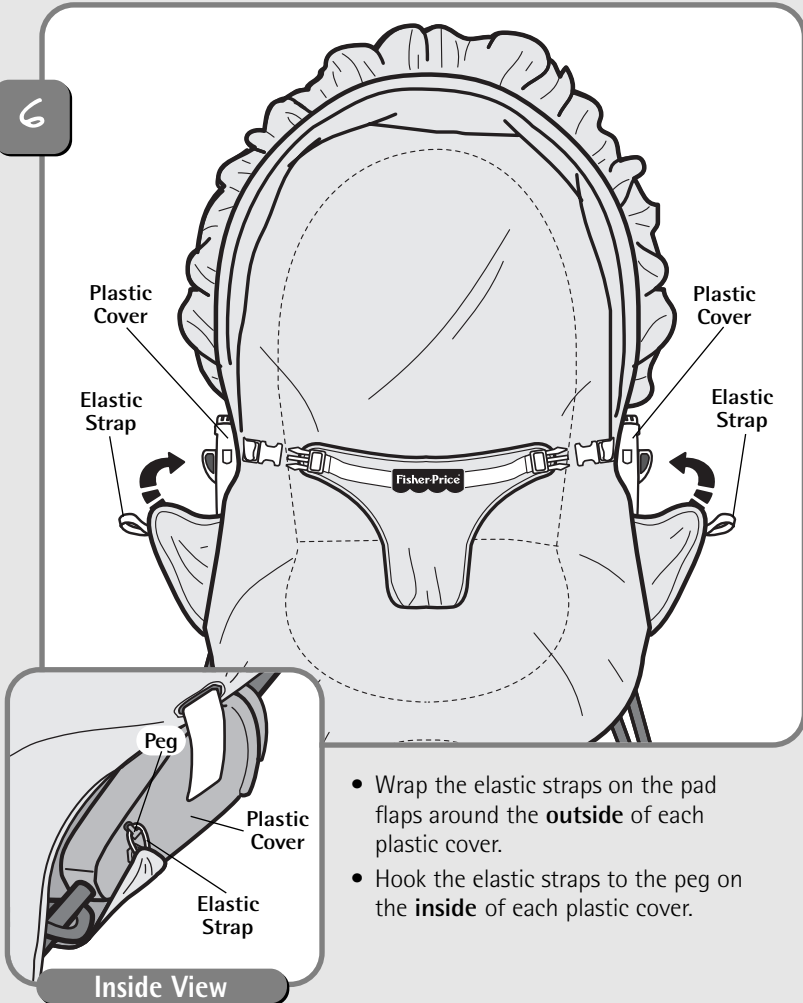
5



- Position the pad with the canopy upright.
- Fit the upper pocket on the back of the pad onto the seat back wire **A**.
- Lift the footrest wire. Fit the lower pocket on the back of the pad onto the footrest wire **B**. Lower the footrest wire.
- Fit the restraint belts through the slots in the pad **C**.

# ASSEMBLY

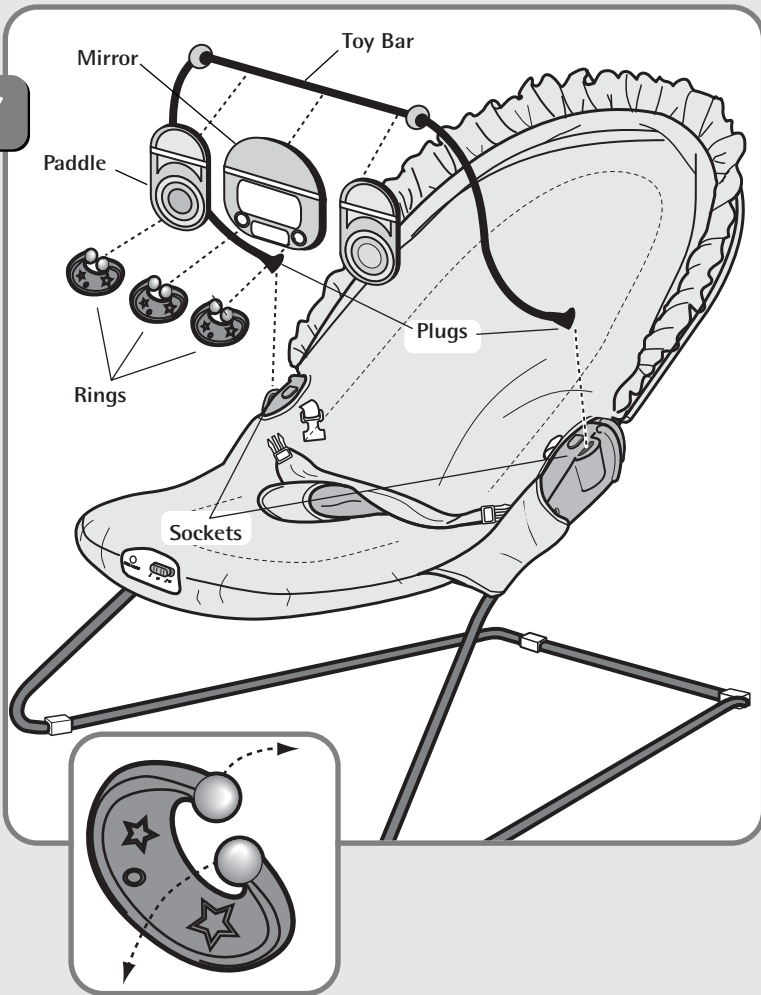
6



- Wrap the elastic straps on the pad flaps around the **outside** of each plastic cover.
- Hook the elastic straps to the peg on the **inside** of each plastic cover.

# ASSEMBLY

7



- Fit the toy bar plugs into the socket in each plastic cover.
  - Snap the mirror and paddles to the toy bar.
  - The rings can be attached to the mirror and one of the paddles as shown.
- Hint:** *Twist the ends of the rings apart to attach them to the mirror or paddles.*

**Assembly is now complete.**

- The toy bar is removable. Simply pull up to remove.

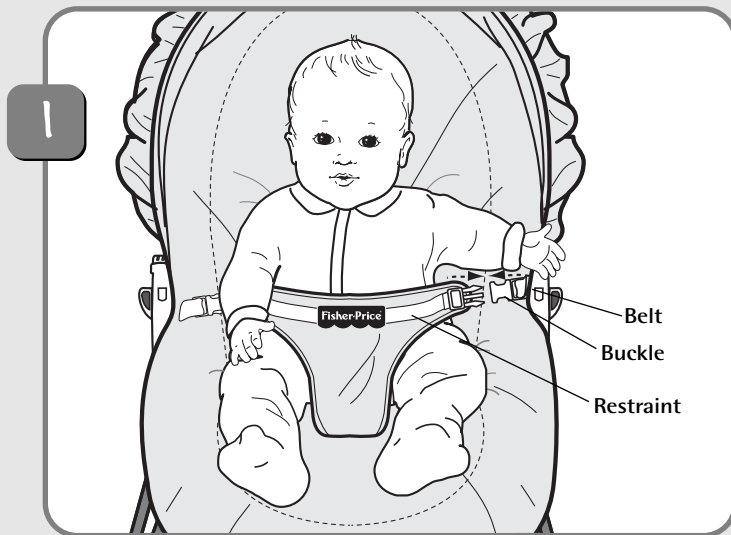
# SET-UP & USE



## WARNING

### To prevent serious injury and/or falls:

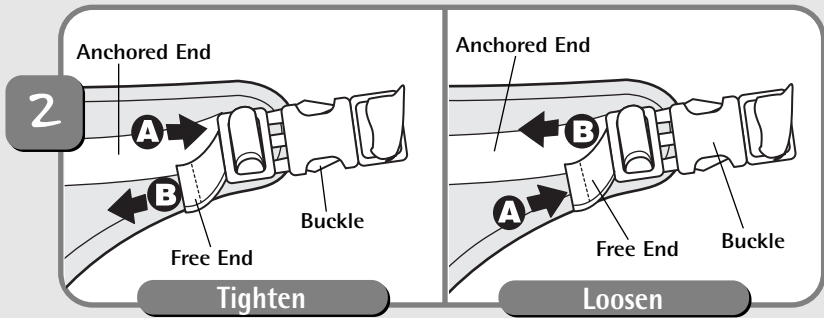
- Never use on any elevated surface.
- Never use as a carrier or lift while child is seated.
- Always use the restraint system.
- Never leave child unattended.
- Never use with a child able to sit up unassisted.



### Securing Your Child

- If the toy bar is attached, remove it before placing your child in the seat.
- Place your child in the seat. Position the restraint between your child's legs.
- Fasten both belts to the buckles on each side of the restraint. **Make sure you hear a "click" on both sides.**
- Check to be sure the restraint is securely attached by pulling it away from your child. The restraint should remain attached.
- Attach the toy bar, if desired (see Assembly step 7).

# SET-UP & USE



## To tighten the restraint:

- Feed the anchored end of the restraint strap up through the buckle to form a loop **A**.
- Pull the free end of the restraint strap **B**.
- Repeat this procedure to tighten the other restraint strap.

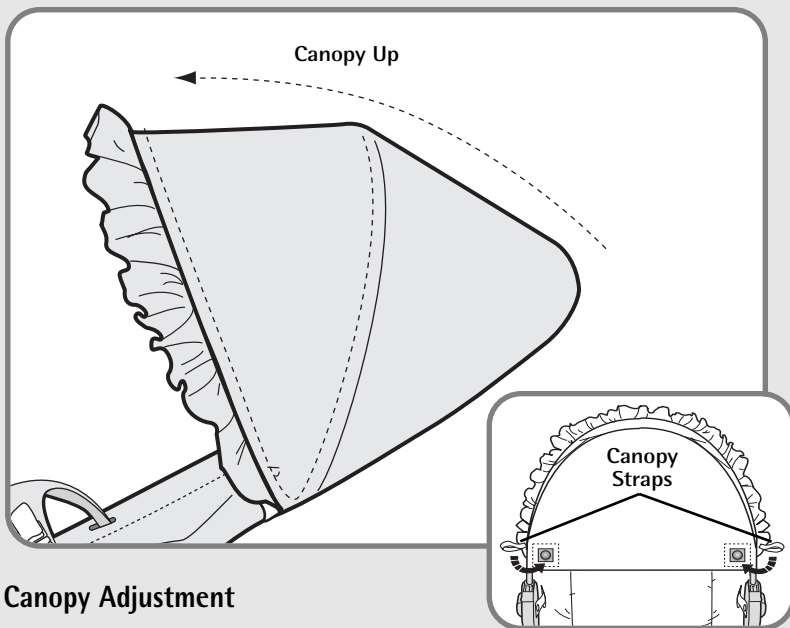
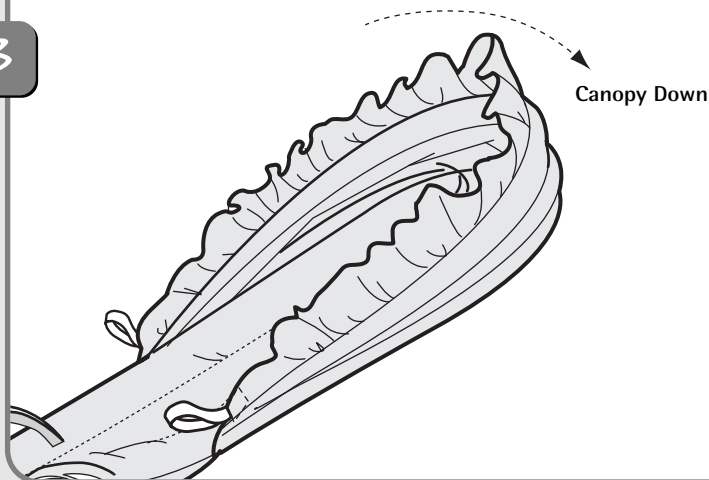
## To loosen the restraint:

- Feed the free end of the restraint strap up through the buckle to form a loop **A**.
- Enlarge the loop by pulling on the end of the loop toward the buckle.
- Pull the anchored end of the restraint strap to shorten the free end of the restraint strap **B**.
- Repeat this procedure to loosen the other restraint strap.

**Please Note:** After adjusting the restraint straps to fit your child, make sure you pull on them to be sure they are securely fastened.

# SET-UP & USE

3



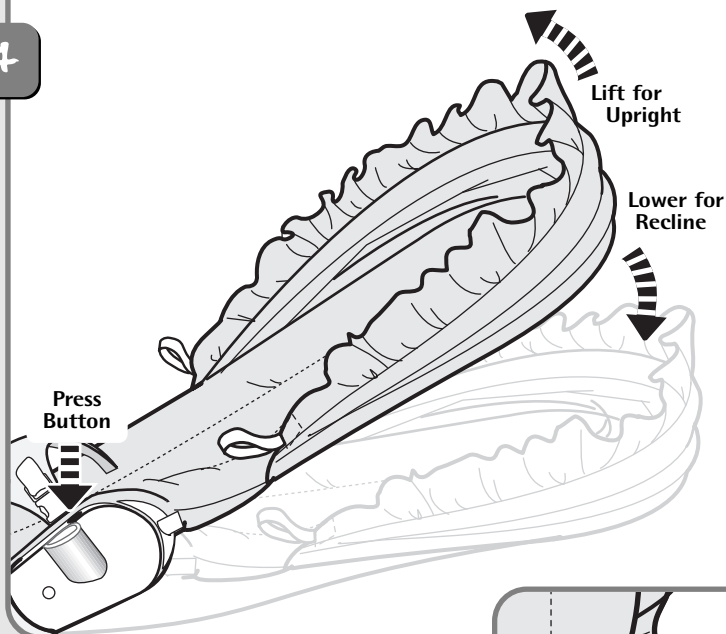
## Canopy Adjustment

The canopy can be adjusted down or up:

**Down** – Remove the canopy straps from the buttons on the back side of the seat. Push the canopy down and fit it behind the seat back wire.

**Up** – Pull and straighten the canopy up. Fasten the canopy straps to the buttons on the back side of the seat.

4



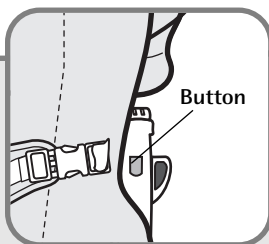
## Seat Back Adjustment

The seat back can be adjusted upright or reclined for baby's comfort.

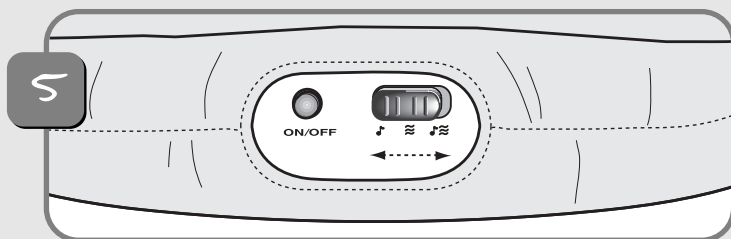
**Reclined** – Press the button on each plastic cover to lower the seat back.

**Hint:** If your child is not seated in the seat, you will need to push the seat back at the same time you are pressing both buttons on the plastic covers.

**Upright** – Lift the seat back until the buttons snap into the opening in each plastic cover. **Make sure you hear a "click" on each side.** Push the seat back to be sure it is secure in the upright position.



# SET-UP & USE



## Soothing Sounds and Vibrations

- Make sure your child is properly secured in the seat.
- First, slide the switch on the soothing unit to select soothing sounds, soothing vibrations or both!

🎵 Soothing Sounds (various lullabies)

🌀 Soothing Vibrations

🎵🌀 Soothing Sounds and Vibrations

- Then press the ON/OFF button on the soothing unit to turn the unit on.

### Hints:

- After each soothing selection, be sure to press the ON/OFF button again to turn the soothing unit on.
- If you slide the switch too quickly, the soothing unit will not turn off. Simply press the ON/OFF button to turn the soothing unit off, then press again to turn back on.
- Press the ON/OFF button to turn the soothing unit off.
- Soothing sounds and/or vibrations will shut off automatically after 10-15 minutes. To turn back on, simply press the ON/OFF button.

**IMPORTANT!** If vibrations or sounds from the soothing unit become faint, or if there are no vibrations or sounds, remove the batteries from the soothing unit and dispose of them properly. Replace the batteries with three new "C" (LR14) alkaline batteries.

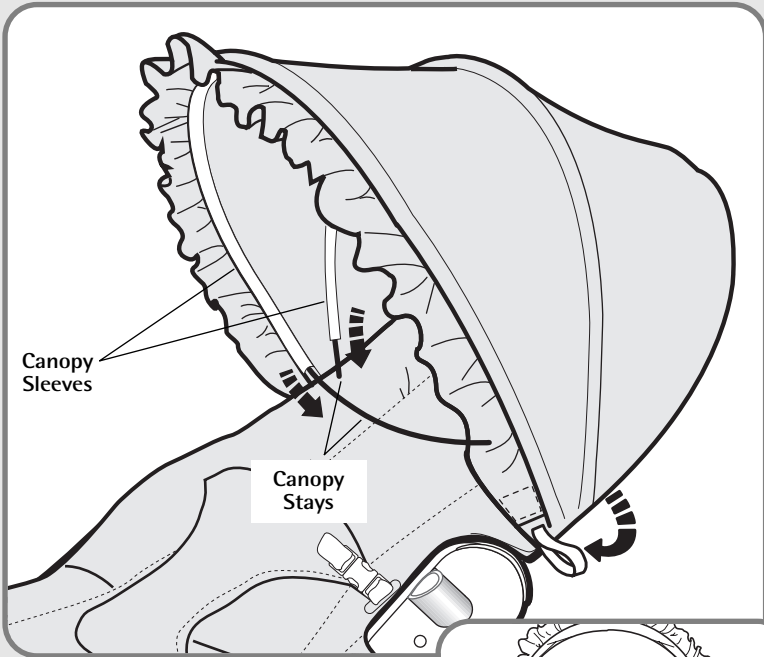
## FCC Note (United States Only)

Note: This equipment has been tested and found to comply with the limits for a Class B digital device, pursuant to Part 15 of the FCC Rules. These limits are designed to provide reasonable protection against harmful interference in a residential installation. This equipment generates, uses and can radiate radio frequency energy and, if not installed and used in accordance with the instructions, may cause harmful interference to radio communications. However, there is no guarantee that interference will not occur in a particular installation. If this equipment does cause harmful interference to radio or television reception, which can be determined by turning the equipment off and on, the user is encouraged to try to correct the interference by one or more of the following measures:

- Reorient or relocate the receiving antenna.
- Increase the separation between the equipment and receiver.
- Consult the dealer or an experienced radio/TV technician for help.

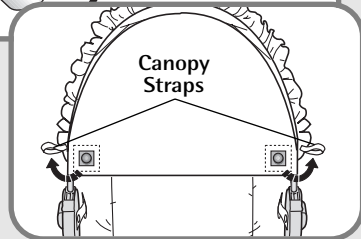
# CARE

The pad is machine washable. Wash the pad separately in cold water on the gentle cycle. Do not use bleach. Tumble dry separately on low heat and remove promptly. The frame, toy bar, mirror, paddles and rings may be wiped clean using a mild cleaning solution and a damp cloth. Do not immerse the soothing unit.



## To remove the pad:

- Remove the toy bar.
- Unhook the canopy straps from the buttons on the back of the product.
- Unhook the elastic straps on the pad side flaps from the peg on each plastic cover.
- Remove both canopy stays from the canopy sleeves.
- Lift the footrest wire and remove the pad lower pocket.
- Fit the restraint straps back through the slots in the pad.
- Slide the pad upper pocket off of the seat back wire.



## To re-assemble the pad:

- Replace the canopy stays into the canopy sleeves.
- Refer to Assembly steps 5 and 6.