

Step by Step Walker

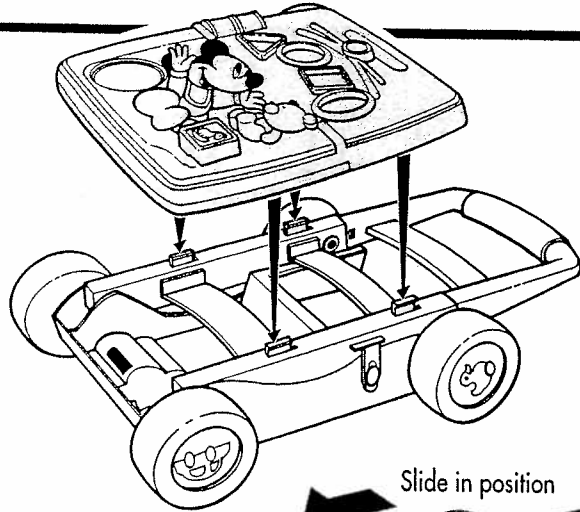
Instructions

MESSAGE TO PARENTS: Should only be used under adult supervision.

CAUTION: To prevent pinching or crushing, always lock product in its upright position, or in its folded position.

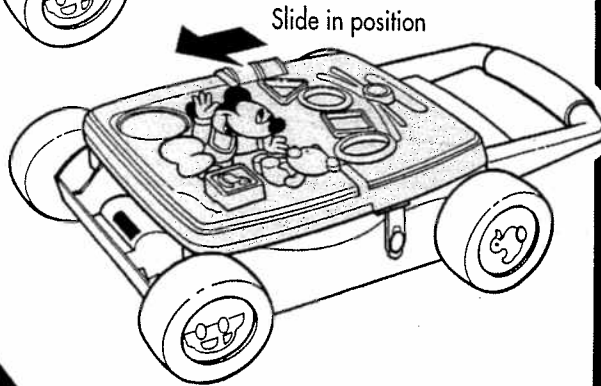
IMPORTANT NOTE: An adult should convert toy to a walker or an activity center. The Step-by-Step Walker is intended for use as a floor activity board and as a walker. It is not designed for sitting or standing on. Please show your child the proper use of this product.

4 In storing position.



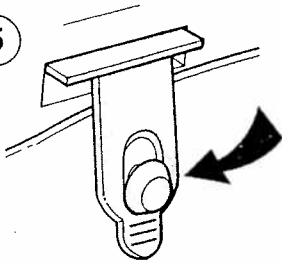
Step 1

Step 2



Slide in position

5



Pull strap down and attach to button on frame (Both sides).

THIS IS NOT DESIGNED FOR SITTING OR STANDING ON.

IMPORTANT NOTE:

Make sure both straps are securely fastened to frame, locking Activity Center in its folded position.

2 YEAR LIMITED WARRANTY

Mattel, Inc. warrants to the original consumer purchaser that this product will be free from defects in materials or workmanship for 2 years (unless otherwise specified in alternate warranties) from the date of purchase. If defective, return the product along with proof of the date of purchase, postage prepaid, to Consumer Adjustment Center, 15930 E. Valley Boulevard, City of Industry, CA 91744 for replacement or refund at our option. This warranty does not cover damage resulting from unauthorized modification, accident, misuse or abuse. **VALID ONLY IN U.S.A.** This warranty gives you specific legal rights and you may also have other rights which vary from state to state.

9956-0700400

Fisher-Price

Fisher-Price, Inc., a subsidiary of Mattel, Inc.,
New York, New York 10010 U.S.A.

Manufactured for Fisher-Price.
© 2000 Mattel, Inc. All Rights Reserved.

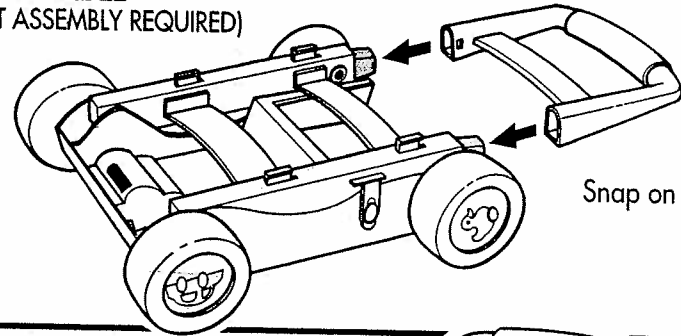
Fisher-Price, the Fisher-Price logo are U.S. trademarks of Mattel, Inc.

PRINTED IN CHINA

Visit the Disney web site at www.Disney.com.
© Disney

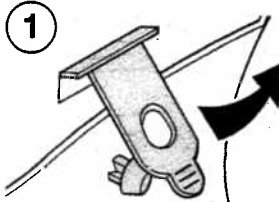
Helpline: 01 628 500 303

TO ASSEMBLE:
(ADULT ASSEMBLY REQUIRED)

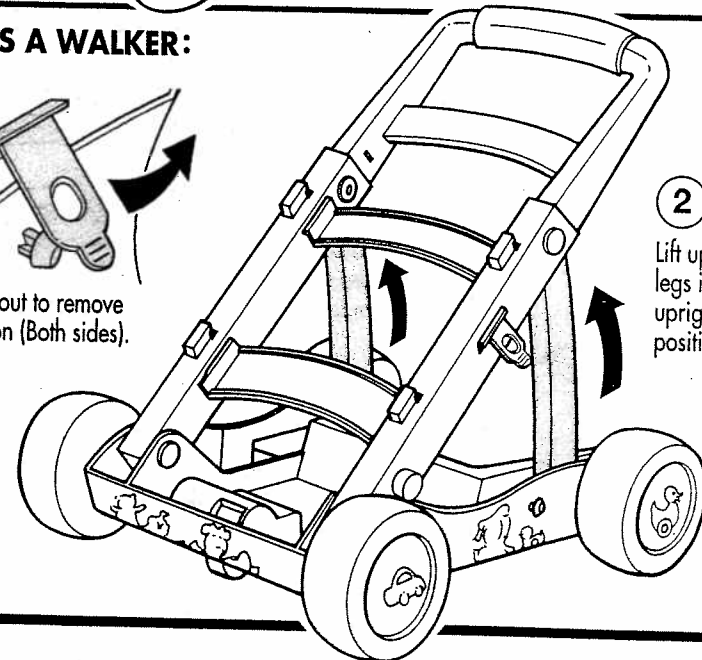


Snap on handle.

USE AS A WALKER:

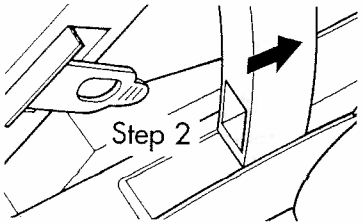
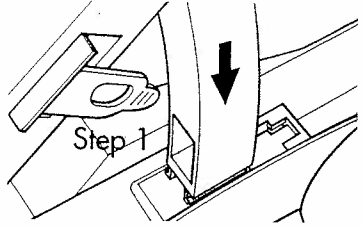


1
Pull strap out to remove from button (Both sides).



2
Lift up the legs into upright position.

3 Slide and lock the legs into locking area. Repeat this procedure to attach other leg to frame.



4 Slide down the activity board in position.



Child can play with walker when the legs are locked.

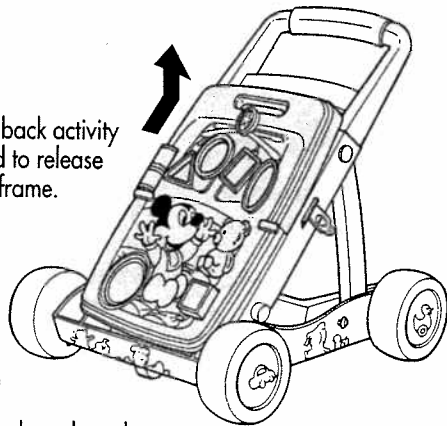
ADULT SUPERVISION REQUIRED.

Make sure both legs are locked in place.

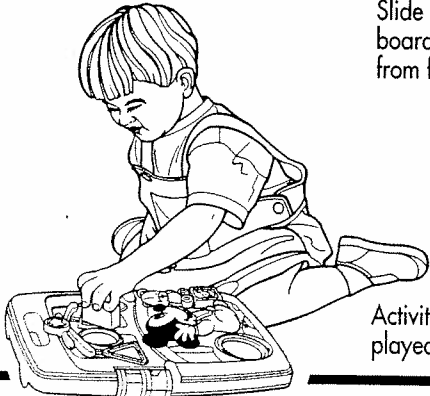
USE AS AN ACTIVITY CENTER:

Keep the frame out of child's reach.

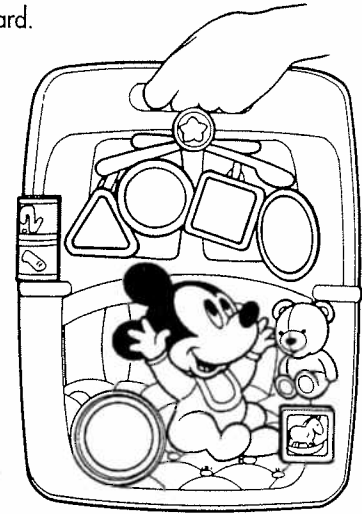
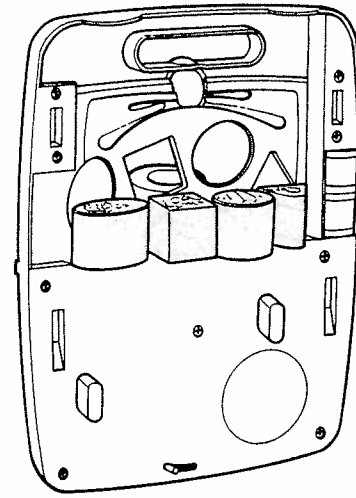
Slide back activity board to release from frame.



Activity board can be played as a floor toy.

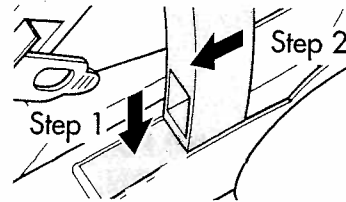


Store shape sorter blocks on back of activity board.

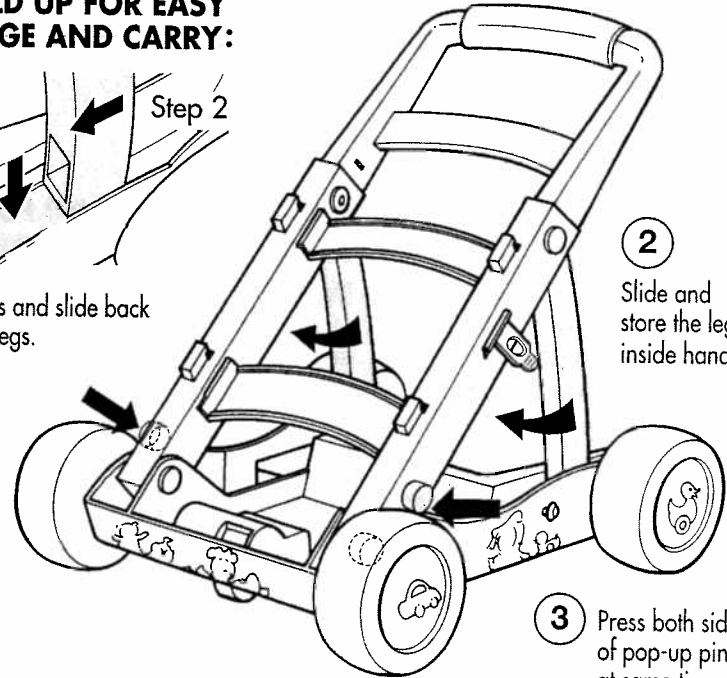


Use as a take along with activity board.

TO FOLD UP FOR EASY STORAGE AND CARRY:



1 Press and slide back the legs.



2 Slide and store the legs inside handle

3 Press both sides of pop-up pins at same time.