

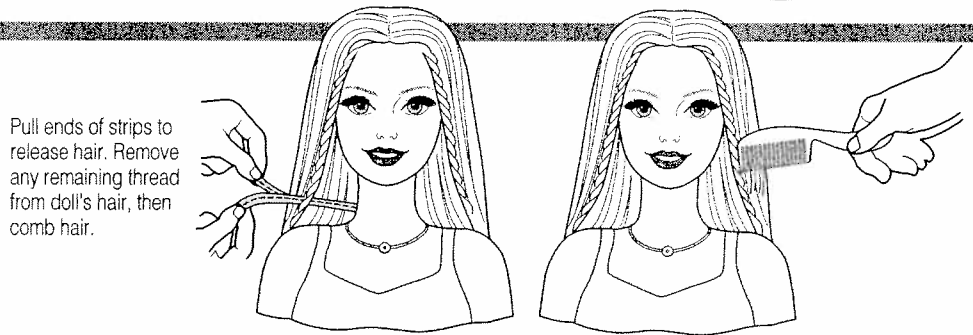
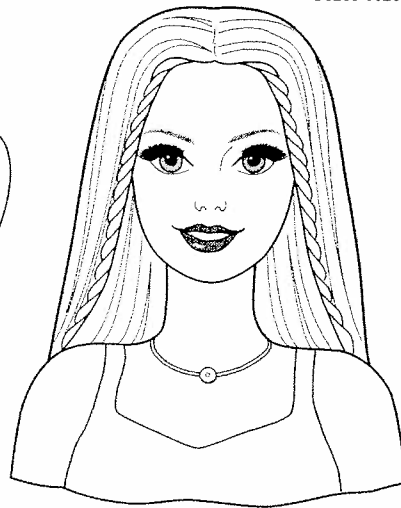
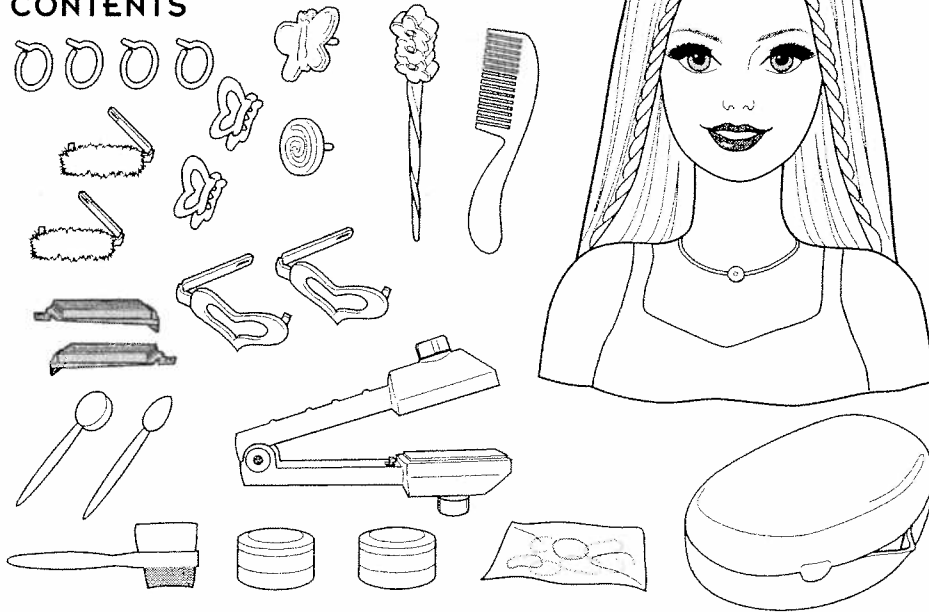


Instructions



B5203-0920G1

CONTENTS



Pull ends of strips to release hair. Remove any remaining thread from doll's hair, then comb hair.

ADULT ASSISTANCE MAY BE REQUIRED.

Please remove everything from the package and compare to the contents shown here. If any items are missing, please call 1-800-524-TOYS.

Keep these instructions for future reference as they contain important information.

© 2003 Mattel, Inc., El Segundo, CA 90245 U.S.A. All Rights Reserved.

cool lookz

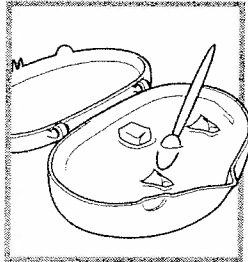
4+

cool crimpin' styling head

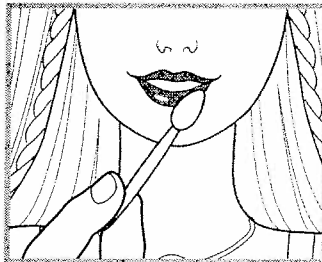
Play Time!

Water toys sometimes get messy. Protect play surfaces before use. Do not use on surfaces that can be damaged by water.

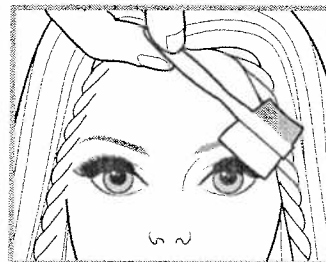
TO APPLY "MAKE-UP"



Fill jewel case with ice and water then wet the applicators.

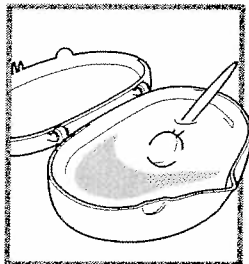


Apply **icy cold** water to doll's face to reveal "lipstick" and "mascara".

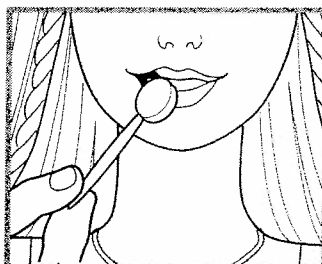


***HELPFUL TIP:** The colder the applicators the better the makeup appears.*

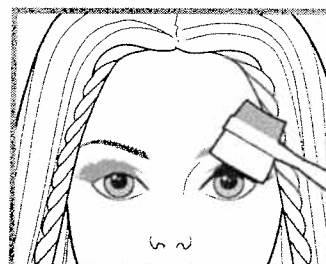
TO REMOVE "MAKE-UP"



Fill a jewel case with warm (not hot) water then wet the applicators.

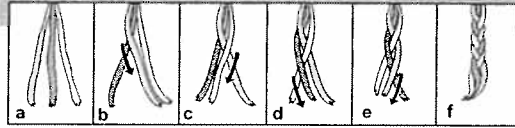


Apply **warm** (not hot) water to doll's face to remove "lipstick" and "mascara".



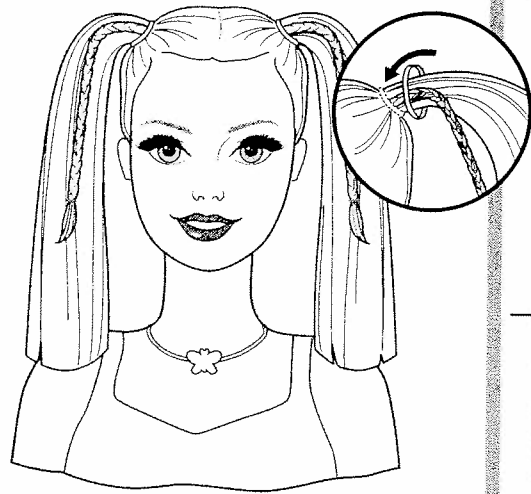
***HELPFUL TIP:** Keep applying warm water until the make-up disappears. Change the warm water in the container regularly. To avoid burns do not use water that is too hot (above 120° F).*

HAIR STYLES AND ACCESSORIES



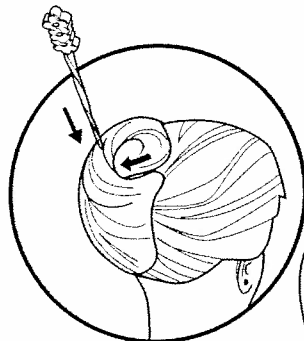
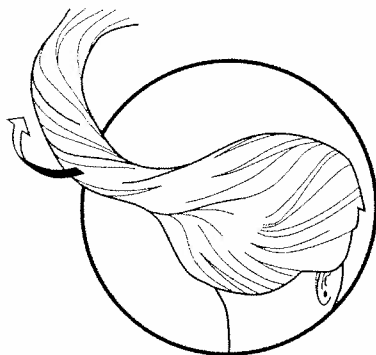
Trendy

Tie locks of hair into ponytails.



Sporty

Comb hair into ponytails. Braid hair (see steps a to f) then fasten with rubber bands.



Glamorous

Twirl doll's hair into a "French twist" and hold together with the hair stick.



G

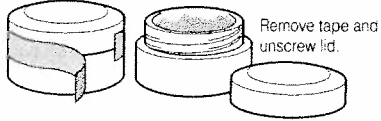
B
P

L

L

GLITTER GEL

*Glitter gel may stain or stick to some surfaces.
Protect play area before use.*

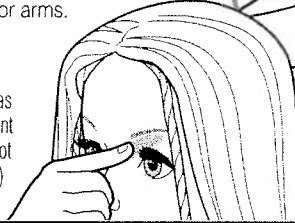


Remove tape and
unscrew lid.

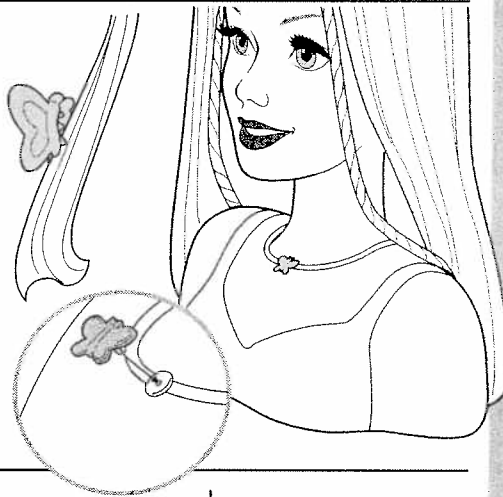
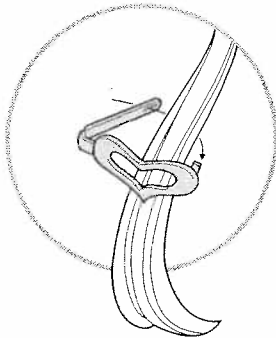
Apply glitter gel for streaks and eye shadow.
Decorate your own face or arms.

SAFETY TESTED GENTLE

The Glitter Gel in this product has
been sealed with a tamper-evident
seal. If this seal is broken, do not
use this product and call 1 (800)
524-TOYS for a replacement.

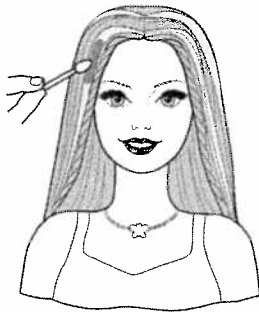


BARRETTES AND PENDANTS



f)

HAIR COLOR CHANGE



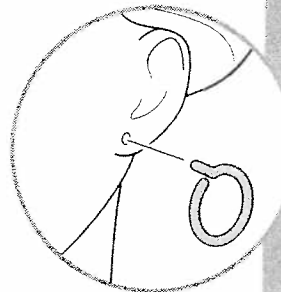
Apply **icy cold** water to
make the **lighter strands**
of doll's hair change color.

**The darker doll hair does not
color change.**

Apply **warm** water to make
doll's hair return to its
original color.

IMPORTANT! Color changes will last longer if you **DO NOT** expose doll or hair falls to intense heat or direct sunlight for prolonged periods of time.

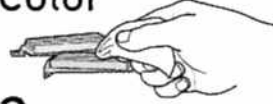
EARRINGS



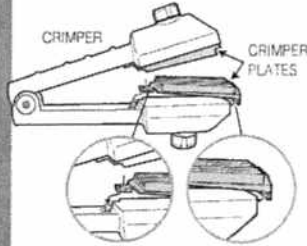
Crimp and Color



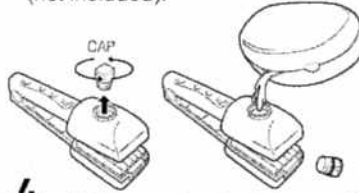
1. Place crimper plates into jewel case filled with **icy-cold** water until plates become chilled.



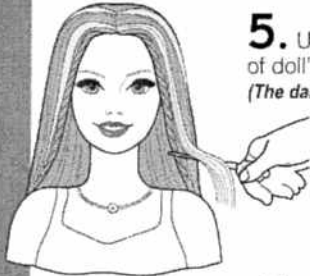
2. Remove moisture from crimper plates with a paper towel or a cloth (not included).



3. Insert crimper plates into the top and bottom crimpers.



4. Rotate counterclockwise and lift up to remove caps, then pour **icy-cold** water into the top and bottom crimpers. To replace caps rotate clockwise.



5. Use the hairpick to separate out the **lighter strands** of doll's hair to be crimped and colored.
(The darker doll hair does not color change.)

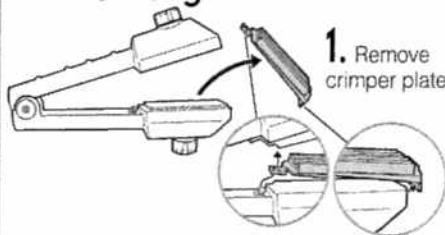
6. Warm the doll's hair between your hands.



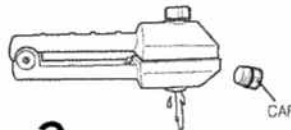
7. Spread out the hair strand between the crimper plates then press crimpers onto the hair. Clamp down on one section for several seconds, then move down and clamp onto the next section. Hair crimps and color-streaks!



Straighten Hair and Remove Color



1. Remove crimper plates.



2. Remove caps and drain out icy-cold water.

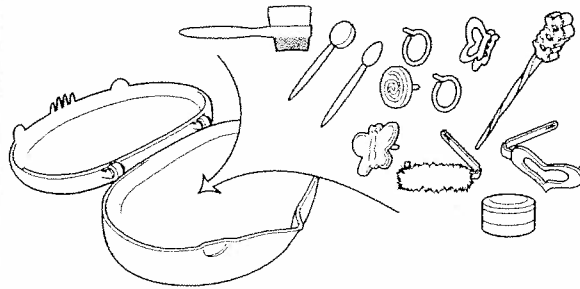
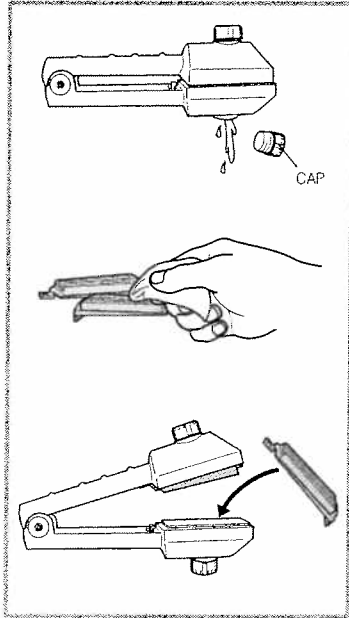


3. Pour **warm** (not hot) water into top and bottom of crimpers. Replace caps.

4. Press crimper handles onto crimped strand of hair. Slide down. (Repeat if necessary.) Crimps and color streaks disappear!



HINT: If color change, crimping or straightening effects slow down, replace water at recommended temperatures.



Storage

Drain, clean, rinse and dry all toy parts before storing.

Colors and decorations may vary from those shown.

Glitter Gel Ingredients: Water (Aqua), Propylene Glycol, Polyethylene, Terephthalate, Acrylates Copolymer, Carbomer, Phenoxyethanol, Triethanolamine, Methylparaben.

CONSUMER INFORMATION

YOU CAN TELL IT'S MATTEL!™ CALL us toll-free or write with any comments or questions about our products or service. Monday-Friday 8:00 a.m.-6:00 p.m. Eastern Time. Outside U.S.A., see telephone directory for Mattel listing.

Consumer Relations, Mattel, Inc.
333 Continental Blvd.
El Segundo, CA 90245 USA

1 (800) 524-TOYS

WE ARE DEDICATED TO QUALITY PRODUCTS.

⚠ WARNING:

CHOKING HAZARD – Small parts.
Not for children under 3 years.

Retain this address for future reference:

Mattel, U.K., Ltd., Vanwall Business Park, Maidenhead SL6 4UB.

Mattel Australia Pty., Ltd., Richmond, Victoria 3121.

Consumer Advisory Service 1800 800 812 (valid only in Australia).

Mattel East Asia Limited, Rm. 1106, South Tower, World Finance Centre, Harbour City, Tsimshatsui,

HK, China. Mattel Canada Inc., Mississauga, Ontario L5R 3W2.

©2002 Mattel, Inc. All Rights Reserved. Tous droits réservés.