

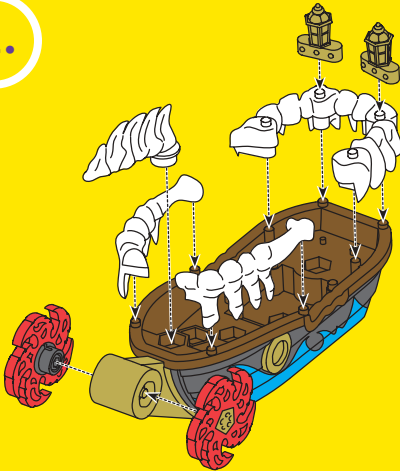
Fisher-Price®

imaginext™

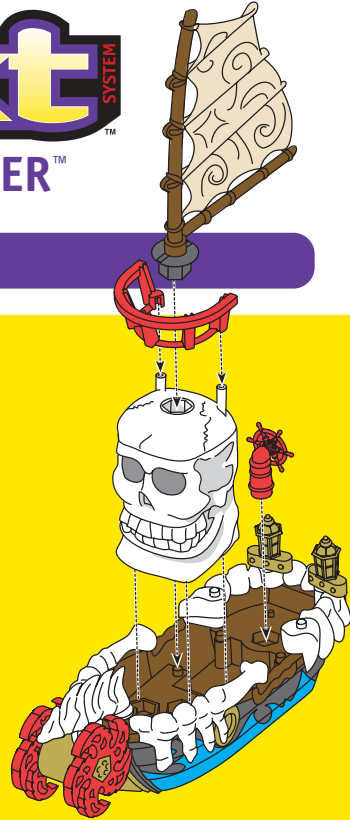
GHOST RAIDER™

Let's Build It!

1.



2.



⚠ WARNING

Warning – Choking Hazard Not recommended for children under 3 years because it contains small parts that can be swallowed.

IMPORTANT!

The glow-in-the-dark feature will last longer if you do not expose this toy to intense heat or direct sunlight for prolonged periods of time. Place the skull, figure and/or railings approximately five feet (1.52 m) away from a light source for 30 seconds. Placing these items closer will not intensify the glow-in-the-dark feature.

Questions? We'd like to hear from you!

Call Fisher-Price® Consumer Relations, toll-free at **1-800-432-5437**, 8 AM - 6 PM EST Monday through Friday. Hearing-impaired consumers using TTY/TDD equipment, please call 1-800-382-7470. Or, write to: Fisher-Price® Consumer Relations, 636 Girard Avenue, East Aurora, New York 14052, U.S.A.

For other countries outside the United States:

Canada: call **1-800-567-7724**, or write to: Mattel Canada Inc., 6155 Freemont Blvd., Mississauga, Ontario L5R 3W2.

Great Britain: telephone **01628 500302**.

Australia: Mattel Australia Pty. Ltd., 658 Church Street, Locked Bag #870, Richmond, Victoria 3121 Australia. Consumer Advisory Service 1300 135 312.

New Zealand: 16-18 William Pickering Drive, Albany 1331, Auckland

Asia: Mattel East Asia Ltd, Room 1106, South Tower, World Finance Centre, Harbour City, Tsimshatsui, HK, China.