

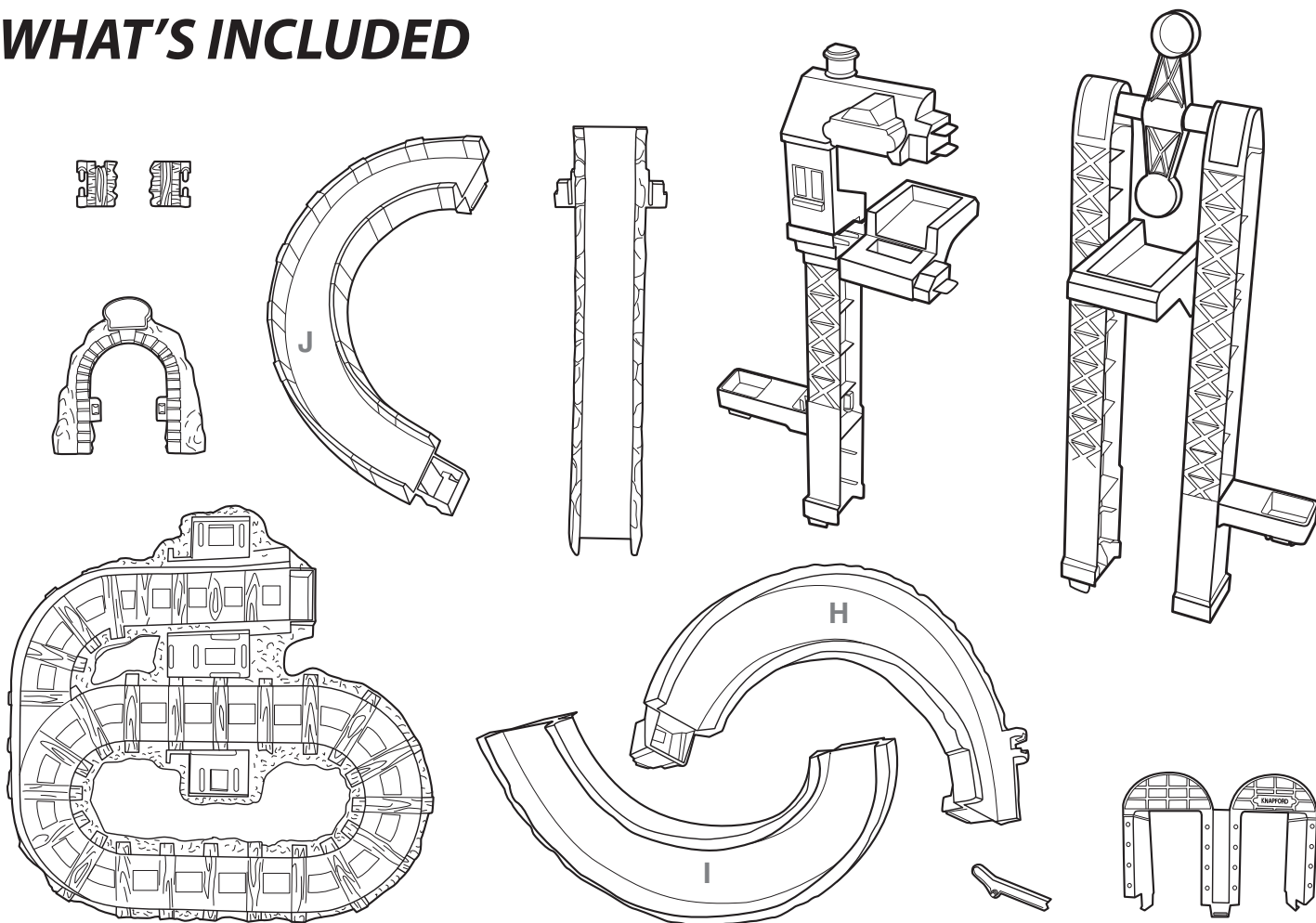


# Twisting Tower Tracks

## INSTRUCTIONS

Keep these instructions for future reference as they contain important information.

### WHAT'S INCLUDED



**ADULT ASSEMBLY REQUIRED.** No tools needed.

**CONSUMER ASSISTANCE**  
1-800-432-5437 (US & Canada)  
1300 135 312 (Australia)  
**service.fisher-price.com**

Fisher-Price, Inc., 636 Girard Avenue, East Aurora, NY 14052.  
Hearing-impaired consumers: 1-800-382-7470.

#### Outside the United States:


Canada: Mattel Canada Inc., 6155 Freemont Blvd.,  
Mississauga, Ontario L5R 3W2; [www.service.mattel.com](http://www.service.mattel.com).

Great Britain: Mattel UK Ltd, Vanwall Business Park,  
Maidenhead SL6 4UB. Helpline: 01628 500303.  
[www.service.mattel.com/uk](http://www.service.mattel.com/uk)

Mattel Europa B.V., Gondel 1, 1186 MJ Amstelveen, Nederland.

Australia: Mattel Australia Pty. Ltd., 658 Church Street,  
Locked Bag #870, Richmond, Victoria 3121 Australia.

New Zealand: 16-18 William Pickering Drive,  
Albany 1331, Auckland.

Thomas the Tank Engine & Friends™ 

CREATED BY BRIFF ALLCROFT  
Based on the Railway Series by The Reverend W Awdry.  
©2014 Gullane (Thomas) Limited. Thomas the Tank Engine & Friends and  
Thomas & Friends are trademarks of Gullane (Thomas) Limited.  
©2014 HIT Entertainment Limited. HIT and the HIT logo are trademarks of HIT  
Entertainment Limited.

©2014 Mattel. All Rights Reserved.

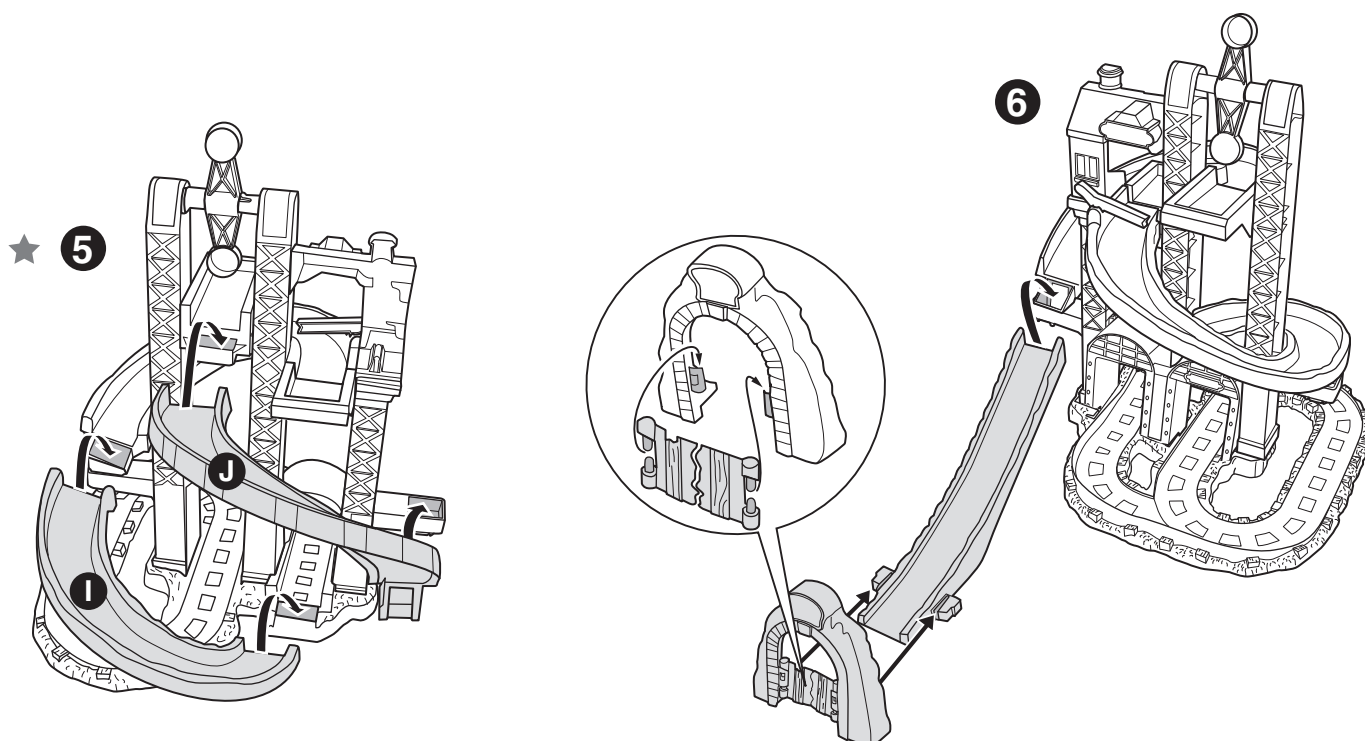
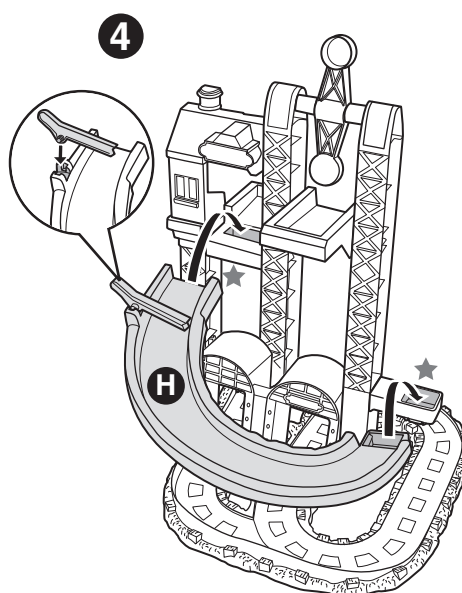
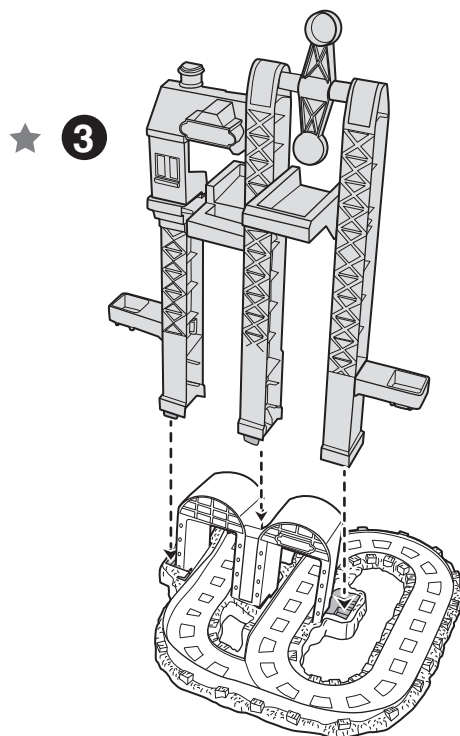
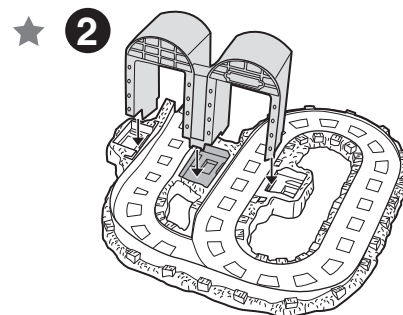
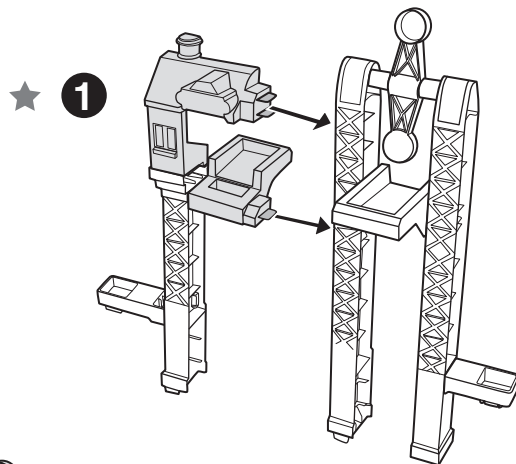
\* and ™ designate U.S. trademarks of Mattel, except as noted. **PRINTED IN CHINA.**  
Mattel East Asia Ltd., Room 503-09, North Tower, World Finance Centre,  
Harbour City, Tsimshatsui, HK, China.



BCX81

**Fisher-Price**

# ASSEMBLY



**NOTE:** Click all assemblies together until you hear them snap firmly into place.  
Be sure all pieces are facing in the proper orientation before assembling.

★ These assemblies are "one-time snaps". Once they are put together, they cannot be taken apart.