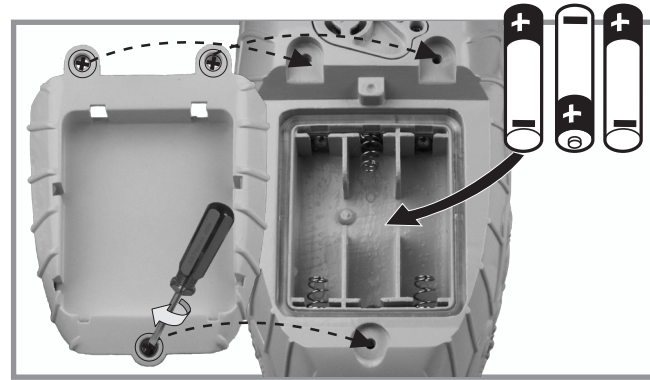


- Requires 3 AA (LR6) alkaline batteries (not included).
- Unscrew the battery cover with a Phillips head screwdriver (not included).
- Install 3 new AA (LR6) alkaline batteries in the orientation (+/-) shown.
- Replace battery cover and tighten screws.
- Replace the batteries when the toy slows down or does not respond.
- For longer life, use alkaline batteries.



In exceptional circumstances batteries may leak fluids that can cause a chemical burn injury or ruin your product. To avoid battery leakage:

- Non-rechargeable batteries are not to be recharged.
- Rechargeable batteries are to be removed from the product before being charged (if designed to be removable).
- Rechargeable batteries are only to be charged under adult supervision (if designed to be removable).
- Do not mix alkaline, standard (carbon-zinc), or rechargeable (nickel-cadmium) batteries.
- Do not mix old and new batteries.
- Only batteries of the same or equivalent type as recommended are to be used.
- Batteries are to be inserted with the correct polarity.
- Exhausted batteries are to be removed from the product.
- The supply terminals are not to be short-circuited.
- Dispose of battery(ies) safely.
- Do not dispose of this product in a fire. The batteries inside may explode or leak.



Protect the environment by not disposing of this product with household waste [2002/96/EC]. Check your local authority for recycling advice and facilities.

Need Assistance? Visit service.mattel.com or call 1-800-524-8697 (US and Canada only).

SERVICE.MATTEL.COM

World Finance Centre, Harbour City, Tsimshatsui, HK, China. Diimport & Diedarkan Oleh: Mattel SEA Ptd Ltd.(993532-P) Lot 13.5, 13th Floor, Menara Lien Hoe, Persiaran Tropicana Golf Country Resort, 47410 PJ. Tel:03-78803817, Fax:03-78803867.

Mattel, Inc., 636 Girard Avenue, East Aurora, NY 14052, U.S.A. Consumer Relations 1-800-524-8697. Mattel U.K. Ltd., Vanwall Business Park, Maidenhead SL6 4UB. Helpline 01628 500303. Mattel Australia Pty., Ltd., Richmond, Victoria. 3121. Consumer Advisory Service - 1300 135 312. Mattel East Asia Ltd., Room 1106, South Tower,



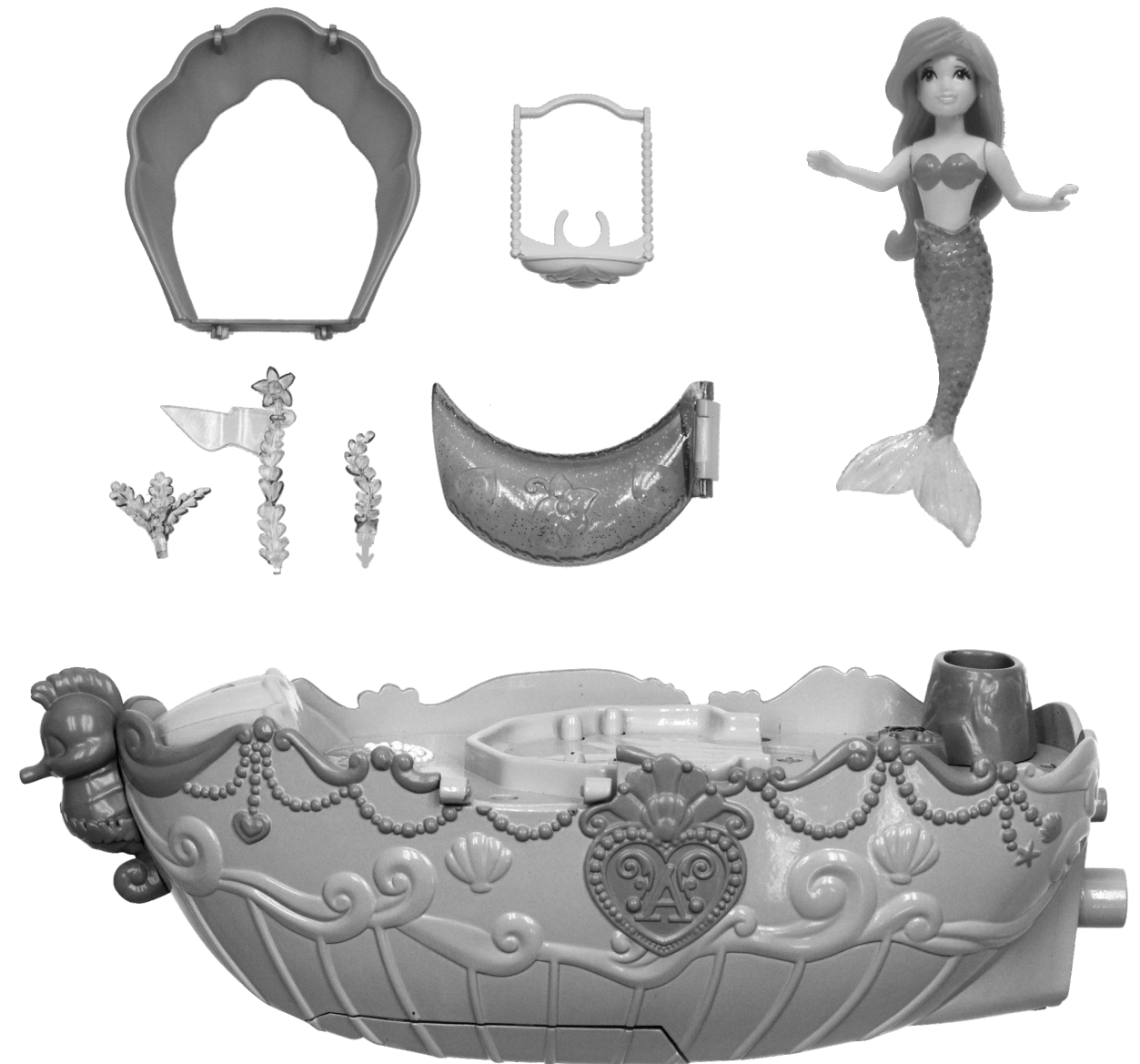
INSTRUCTIONS

CONTENTS



FH99-0920

3+

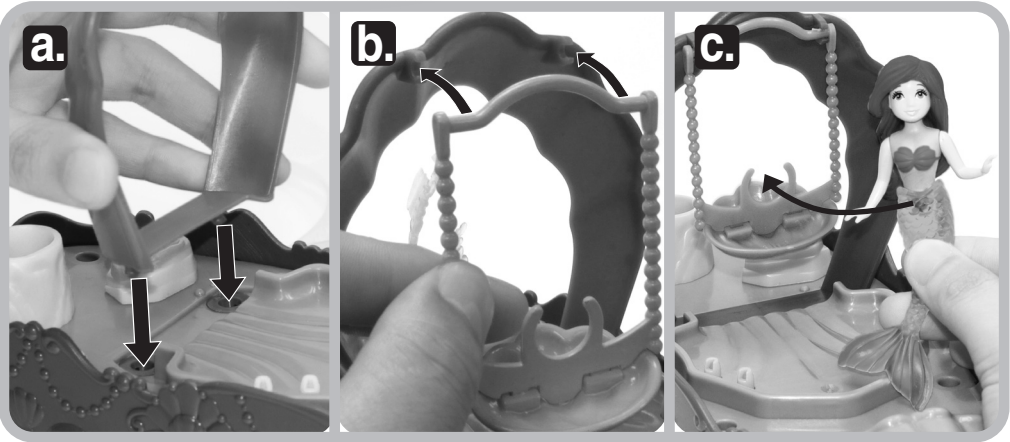


The toy is to be operated in water only when fully assembled in accordance with the instruction.
Doll cannot stand alone. Requires 3 AA (LR6) alkaline batteries, not included. Dispose of batteries safely.



Please remove everything from the package and compare to the contents shown here.
If any items are missing, please contact your local Mattel office.
Keep these instructions for future reference as they contain important information.

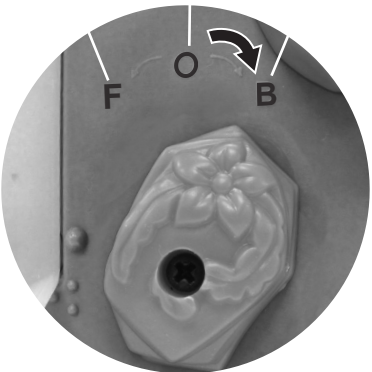
ASSEMBLY



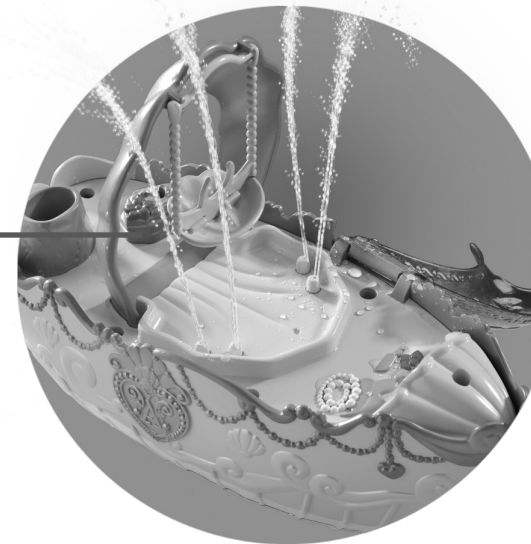
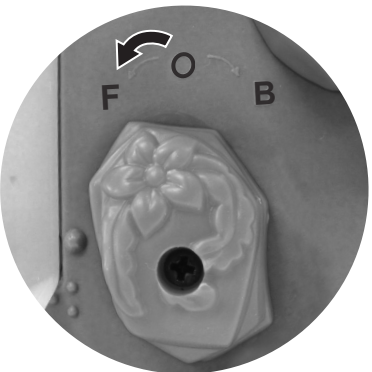
3 WAYS TO PLAY

1

F:Fountain O:Off B:Bubble



2



3



TROUBLESHOOTING
Pull up seaweed and drain when boat fills with water and sinks.



Water toys sometimes get messy.
Protect play area before use. Drain,
rinse, clean and dry all items
thoroughly before storing.