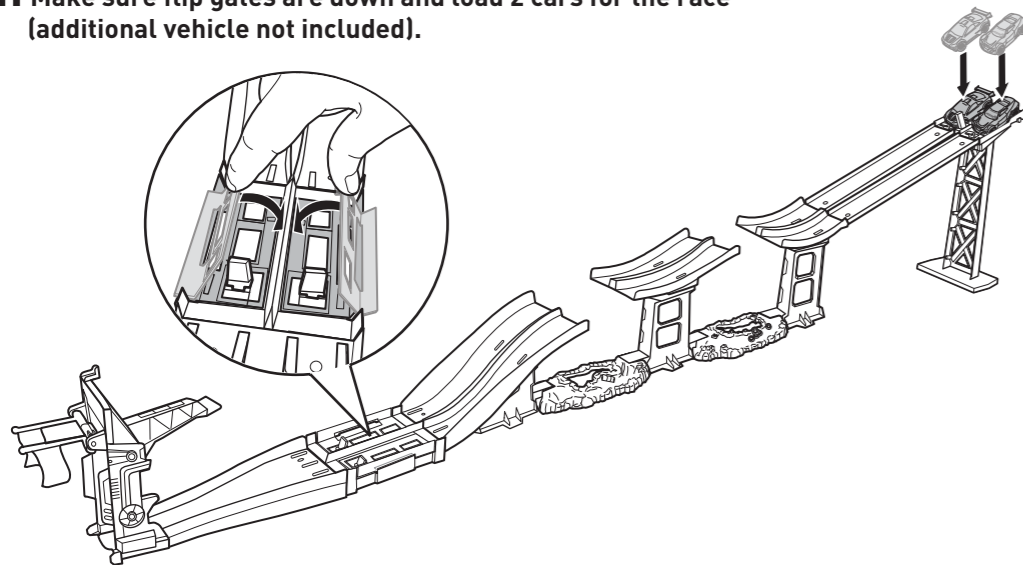
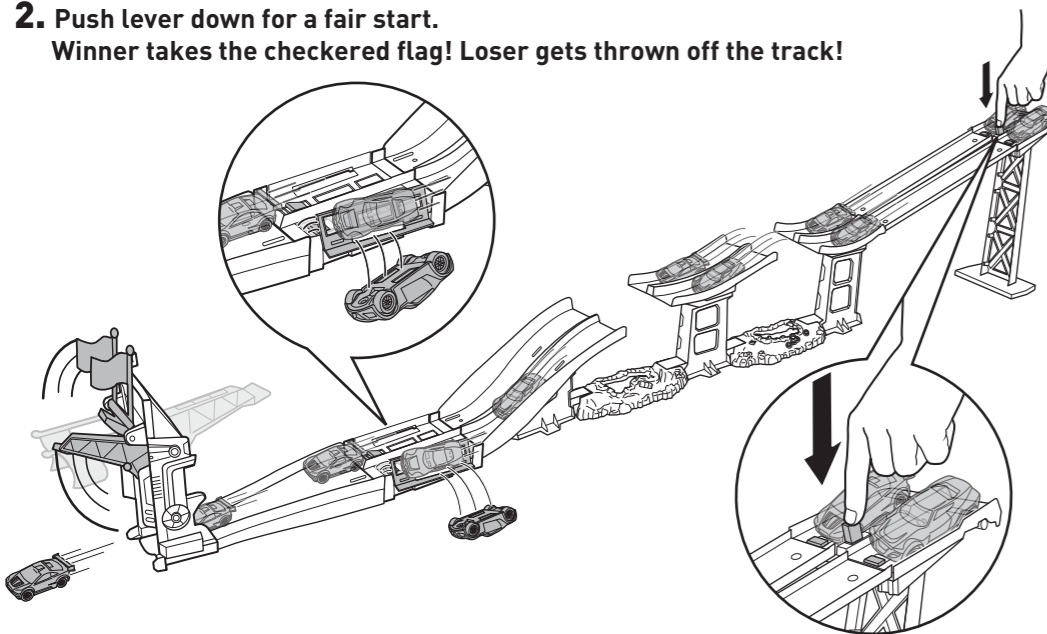


1. Make sure flip gates are down and load 2 cars for the race (additional vehicle not included).

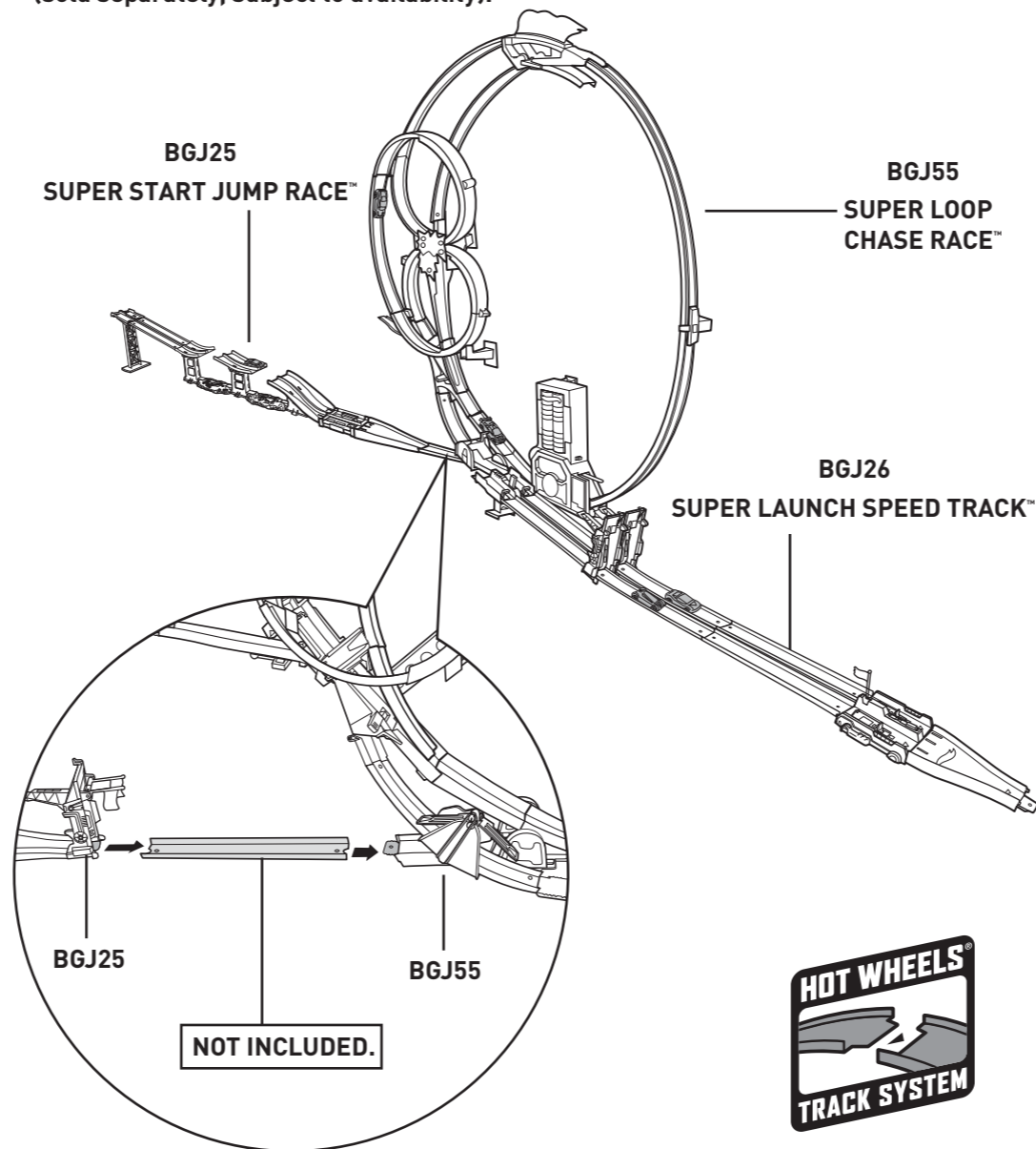


2. Push lever down for a fair start. Winner takes the checkered flag! Loser gets thrown off the track!



INCLUDES 1 VEHICLE. ADDITIONAL VEHICLE SOLD SEPARATELY. NOT FOR USE WITH SOME HOT WHEELS® VEHICLES.

Connects to SUPER LOOP CHASE RACE™ and SUPER LAUNCH SPEED TRACK™ (sold separately, subject to availability).

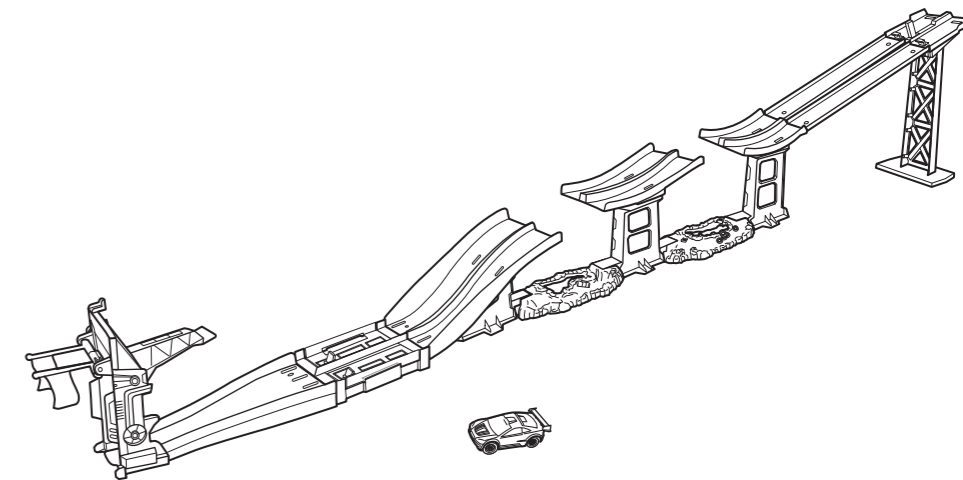


©2014 Mattel. All Rights Reserved. Mattel, Inc., 636 Girard Avenue, East Aurora, NY 14052, U.S.A. Consumer Relations 1-800-524-8697. Mattel U.K. Ltd., Vanwall Business Park, Maidenhead SL6 4UB. Helpline 01628 500303. Mattel Australia Pty., Ltd., Richmond, Victoria. 3121. Consumer Advisory Service - 1300 135 312. Mattel East Asia Ltd., Room 503-09, North Tower, World Finance Centre, Harbour City, Tsimshatsui, HK, China. Diimport & Diedarkan Oleh: Mattel SEA Ptd Ltd. (993532-P) Lot 13.5, 13th Floor, Menara Lien Hoe, Persiaran Tropicana Golf Country Resort, 47410 PJ, Malaysia. Tel:03-78803817, Fax:03-78803867.



RACE

SUPER START JUMP RACE™



4+

service.mattel.com
HOTWHEELS.COM

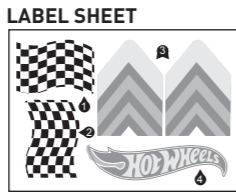
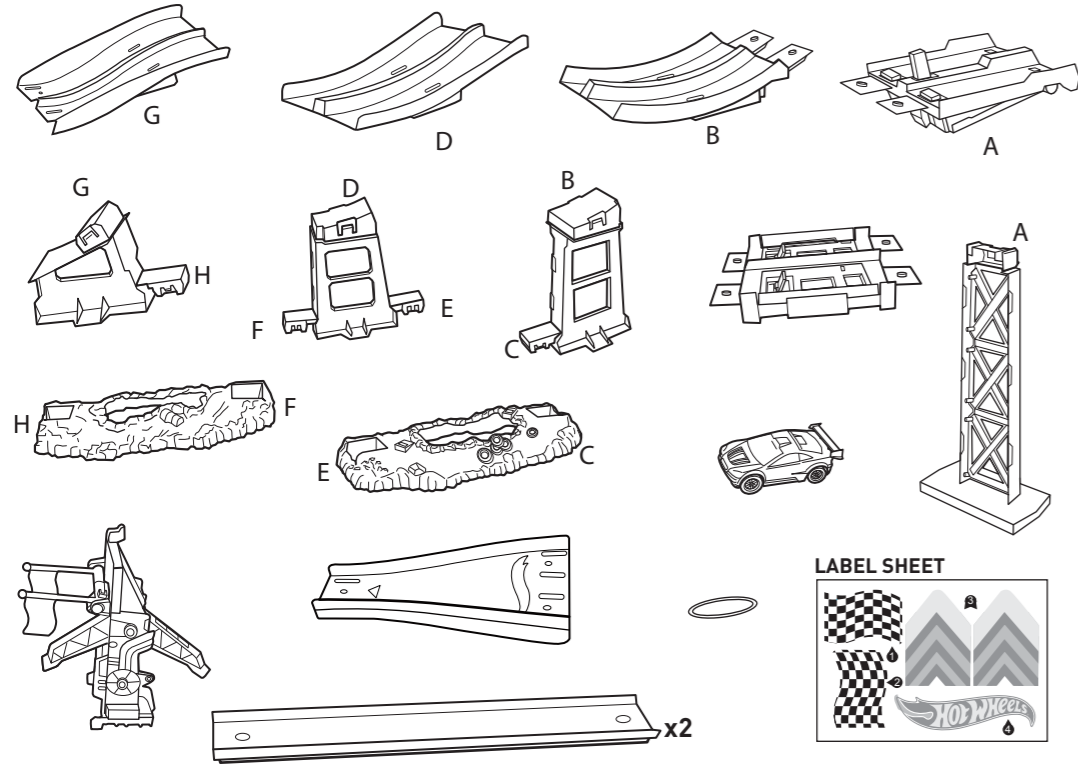
WARNING:
CHOKING HAZARD - Small parts.
Not for children under 3 years.



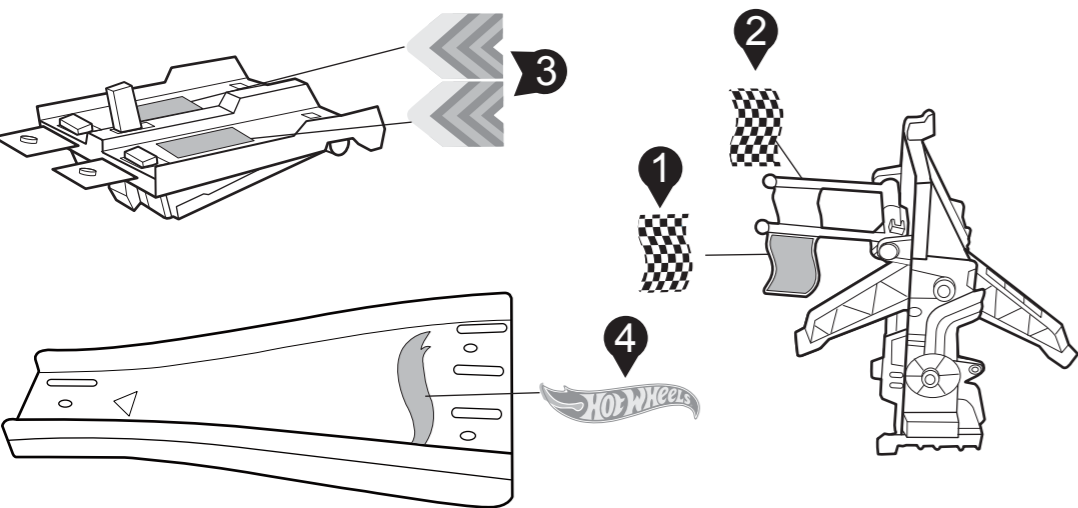
ASST.BGJ24
BGJ25-0920

PLEASE KEEP THESE INSTRUCTIONS FOR FUTURE REFERENCE AS THEY CONTAIN IMPORTANT INFORMATION.

CONTENTS



APPLY LABELS



ASSEMBLY



Refer to letter on toy parts and this page to help with assembly.

