



Please keep this instruction sheet for future reference,
as it contains important information.

This product includes four AA batteries in a disposable box. Batteries included are for demonstration purposes only. Before first time use, remove the AA batteries in the disposable box and throw them away.

Requires four C (LR14) **alkaline** batteries (not included) for operation.

Adult assembly is required. Tool required for assembly: Phillips screwdriver (not included).

The mobile portion of this product may be used from birth until 5 months.

The soother portion of this product may be used from birth until 24 months.

A crib mobile is intended for visual stimulation and is not to be grasped by a child.

Consumer Information

**CONSUMER ASSISTANCE**

1-800-432-5437 (US & Canada)
1300 135 312 (Australia)

service.fisher-price.com

Fisher-Price, Inc., 636 Girard Avenue, East Aurora, NY 14052.
Hearing-impaired consumers: 1-800-382-7470.

Outside the United States:

Canada: Mattel Canada Inc., 6155 Freemont Blvd.,
Mississauga, Ontario L5R 3W2; www.service.mattel.com.

Great Britain: Mattel UK Ltd, Vanwall Business Park,
Maidenhead SL6 4UB. Helpline: 01628 500303.
www.service.mattel.com/uk

Mattel Europa B.V., Gondel 1, 1186 MJ Amstelveen, Nederland.

Australia: Mattel Australia Pty. Ltd., 658 Church Street,
Locked Bag #870, Richmond, Victoria 3121 Australia.

New Zealand: 16-18 William Pickering Drive,
Albany 1331, Auckland.

FCC STATEMENT (UNITED STATES ONLY)

This equipment has been tested and found to comply with the limits for a Class B digital device, pursuant to Part 15 of the FCC rules. These limits are designed to provide reasonable protection against harmful interference in a residential installation. This equipment generates uses and can radiate radio frequency energy and, if not installed and used in accordance with the instructions, may cause harmful interference to radio communications. However, there is no guarantee that interference will not occur in a particular installation. If this equipment does cause harmful interference to radio or television reception, which can be determined by turning the equipment off and on, the user is encouraged to try to correct the interference by one or more of the following measures:

- Reorient or relocate the receiving antenna.
- Increase the separation between the equipment and receiver.
- Consult the dealer or an experienced radio/TV technician for help.

NOTE: Changes or modifications not expressly approved by the manufacturer responsible for compliance could void the user's authority to operate the equipment. This device complies with Part 15 of the FCC Rules. Operation is subject to the following two conditions: (1) This device may not cause harmful interference, and (2) this device must accept any interference received, including interference that may cause undesired operation.

Care

Wipe this toy with a clean cloth dampened with a mild soap and water solution. Do not immerse this toy. The soft toys are surface washable.

CAN ICES-3 (B)/NMB-3 (B)

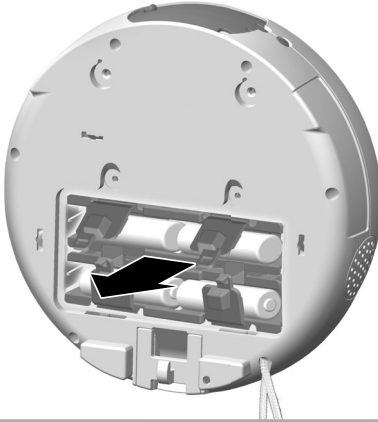
Operation is subject to the following two conditions: (1) this device may not cause interference, and (2) this device must accept any interference, including interference that may cause undesired operation of the device.

L'utilisation de ce dispositif est autorisée seulement aux conditions suivantes :

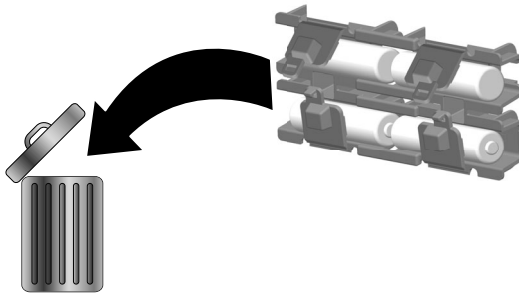
- (1) il ne doit pas produire de brouillage et
- (2) l'utilisateur du dispositif doit être prêt à accepter tout brouillage radioélectrique reçu, même si ce brouillage est susceptible de compromettre le fonctionnement du dispositif.

Soother Battery Replacement

Before First Time Use: The soother includes four AA batteries in a disposable box for demonstration purposes only. Remove the disposable box with AA batteries and **install four C (LR14) alkaline batteries**.

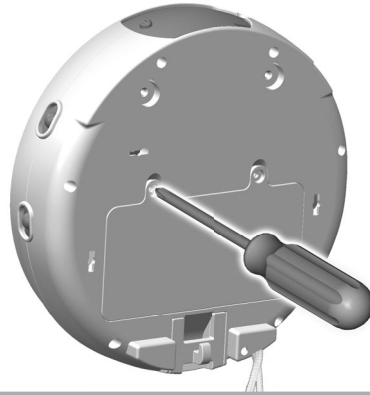
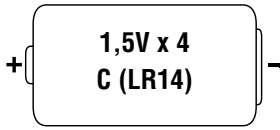


- Locate the battery compartment on the back of the soother.
- Loosen the screws in the battery compartment door and remove the door.
- Open the tabs on the disposable box and lift to remove it.



- Throw away the disposable box and the included AA batteries.

Soother Battery Replacement



3

- Insert four, new C (LR14) **alkaline** batteries in the battery compartment.
- Hint: We recommend **alkaline** batteries for longer battery life.*
- Replace the battery compartment door and tighten the screws.
- If the soother begins to operate erratically, you may need to reset the electronics. Slide the power/volume switch off and then back on.
- When sounds and lights from this soother become faint or stop, it's time for an adult to change the batteries.
- Protect the environment by not disposing of this product with household waste (2002/96/EC). Check your local authority for recycling advice and facilities.



Battery Safety Information

In exceptional circumstances, batteries may leak fluids that can cause a chemical burn injury or ruin your product. To avoid battery leakage:

- Do not mix old and new batteries or batteries of different types: alkaline, standard (carbon-zinc) or rechargeable (nickel-cadmium).
- Insert batteries as indicated inside the battery compartment.
- Remove batteries during long periods of non-use. Always remove exhausted batteries from the product. Dispose of batteries safely. Do not dispose of this product in a fire. The batteries inside may explode or leak.
- Never short-circuit the battery terminals.
- Use only batteries of the same or equivalent type, as recommended.
- Do not charge non-rechargeable batteries.
- Remove rechargeable batteries from the product before charging.
- If removable, rechargeable batteries are used, they are only to be charged under adult supervision.

Assembly

Note: All of the screws used to assemble this toy are attached to the product.

Follow these instructions carefully to fully secure the screws.

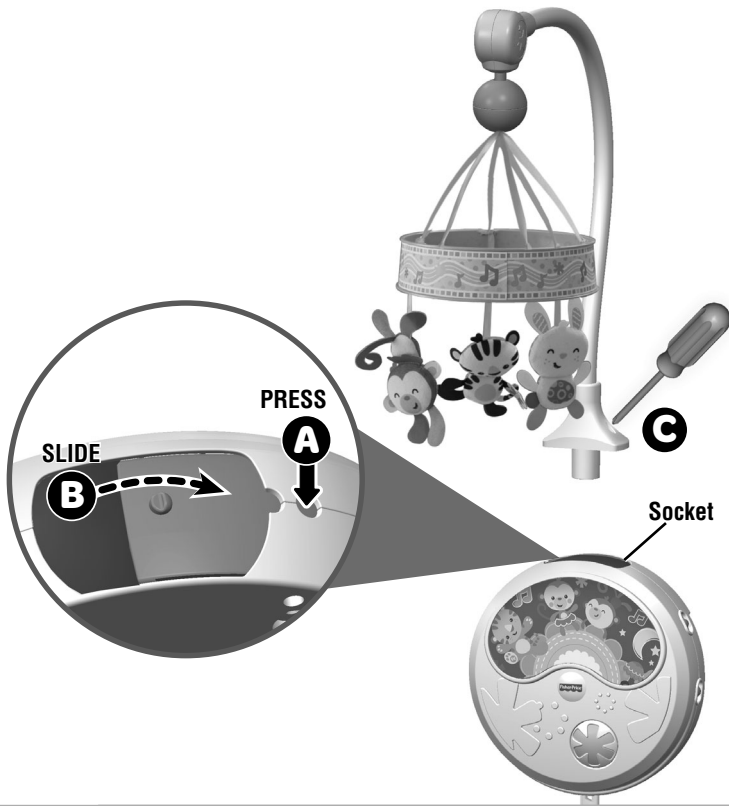
Tighten and loosen all screws with a Phillips screwdriver. Do not over-tighten the screws.



1

- Fit the crib adaptor to the soother and tighten the screws.

Assembly



2

- Press the button on the soother next to the socket **A** and then slide the socket door open **B**.
- Fit the arm into the socket in the soother and tighten the screws **C**.

Crib Attachment



WARNING

Prevent Entanglement Injury

- Keep out of baby's reach.
- Remove mobile portion of product from crib or playpen when baby begins to push up on hands and knees.
- This product may not attach to all crib designs. Do not add additional strings or straps to attach to crib or playpen.
- Use **ONLY** attached to a crib.



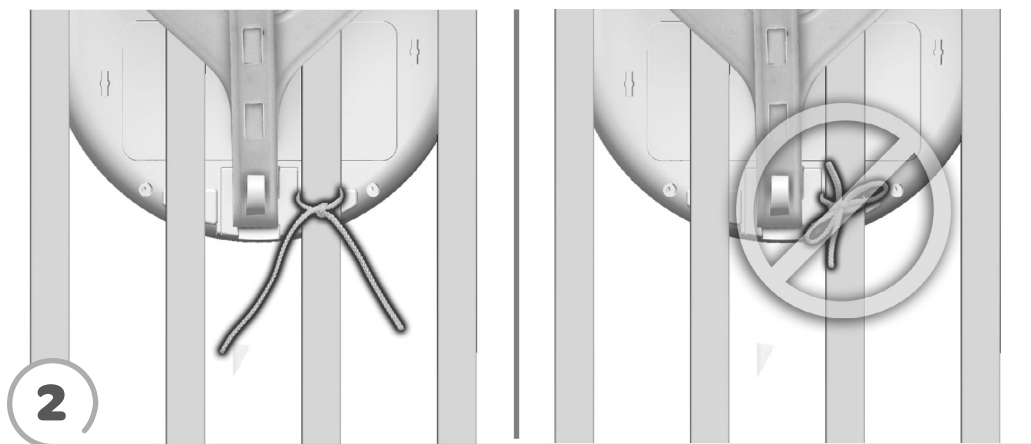
IMPORTANT! Always attach with all provided fasteners tightly to a crib or playpen according to the instructions. Do not add additional strings or straps to attach to a crib. Check frequently.

- Position the toy inside the crib. Wrap the toy's attachment strap around the crib top rail **A**.
- Slide the end of the attachment strap through the slot on the back of the toy **B**. Pull the end of the attachment strap up and fasten the slot to the peg on the back of the toy **C**.

Note: This toy should be snug against the crib rail and spindles. Use the strap slot that provides the tightest fit.

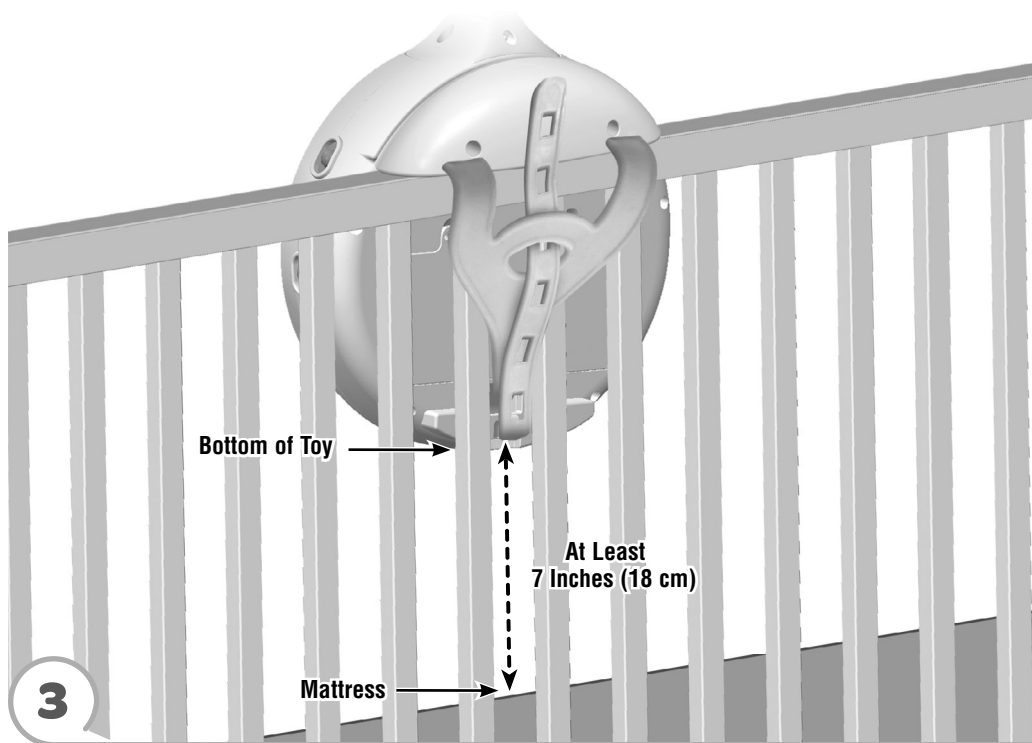
- If you have excess strap, slide the free end of the attachment strap under the slot at the top of the attachment strap **D**.

Crib Attachment



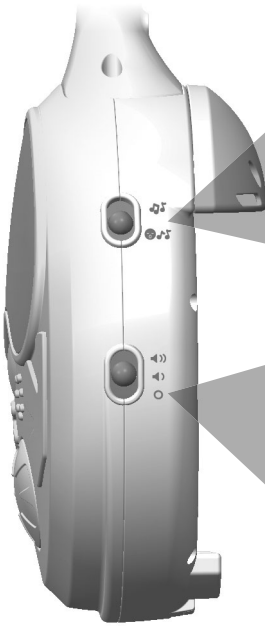
- Tie the toy strings to a crib spindle.

Note: *It is better to tie the strings in a knot than a bow, since a bow may be easily untied.*



- If the distance between the toy and the mattress is less than 7 inches (18 cm), lower the crib mattress.

Use



Mode Switch

Mode Switch



Listen to music along with a moving light show. Light show will fade off after about 15 minutes. Sound volume will begin to decrease after 30 minutes and then fade off completely after 60 minutes.



Listen to 20 minutes of music and watch a moving light show.

Power/Volume Switch

Power/Volume Switch



ON with low volume



ON with high volume



OFF

SIDE VIEW



Activation Button

Press to start.

Press and hold to turn off.

FRONT VIEW

Convert to Soother

Remove the mobile and use as a soother.



- Loosen both screws in the the base of the arm. Lift and remove the arm.
- Close the socket door on top of the soother.

Note: The socket door must be closed for moving light show operation. If display is not moving, make sure the door is completely closed.

- Store the mobile in a safe place for future use.