



STUNT 'N DUNK®

INSTRUCTIONS

Keep these instructions for future reference as they contain important information.

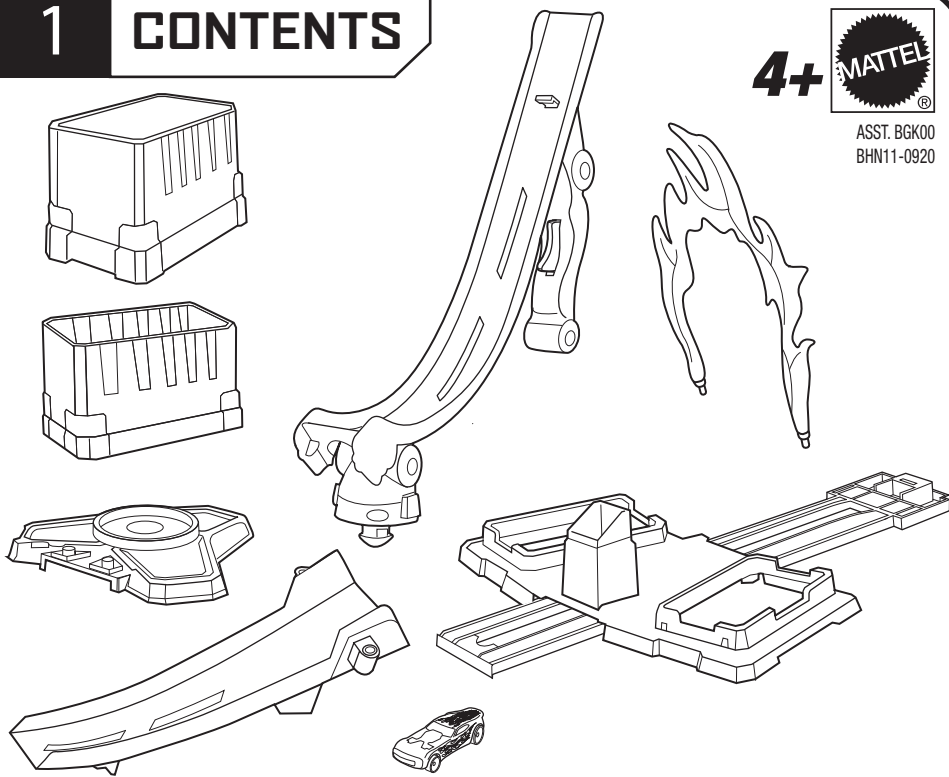
1

CONTENTS

4+



ASST. BGK00
BHN11-0920

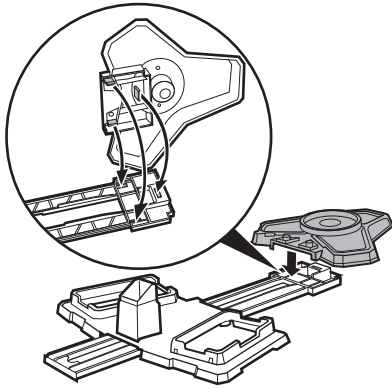


©2013 Mattel. All Rights Reserved. Mattel, Inc., 636 Girard Avenue, East Aurora, NY 14052, U.S.A. Consumer Relations 1-800-524-8697. Mattel U.K. Ltd., Vanwall Business Park, Maidenhead SL6 4UB. Helpline 01628 500303. Mattel Australia Pty., Ltd., Richmond, Victoria. 3121. Consumer Advisory Service - 1300 135 312. Mattel East Asia Ltd., Room 503-09, North Tower, World Finance Centre, Harbour City, Tsimshatsui, HK, China. Diimport & Diedarkan Oleh: Mattel SEA Ptd Ltd.(993532-P) Lot 13.5, 13th Floor, Menara Lien Hoe, Persiaran Tropicana Golf Country Resort, 47410 PJ. Malaysia. Tel:03-78803817, Fax:03-78803867. service.mattel.com

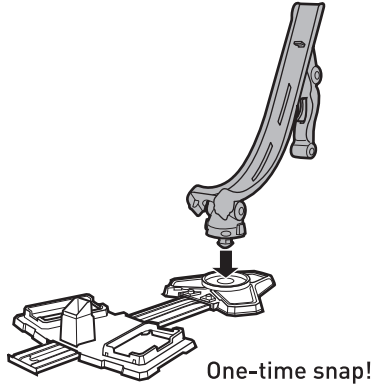
2

ASSEMBLY

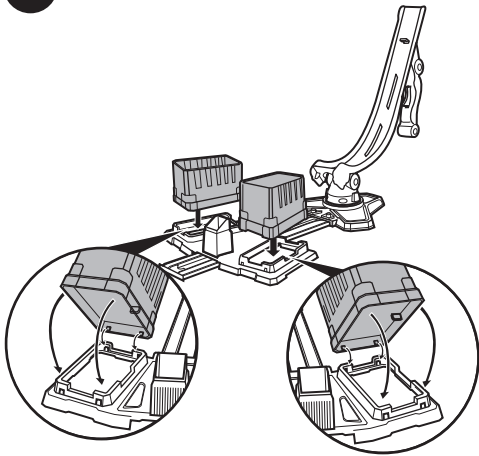
1



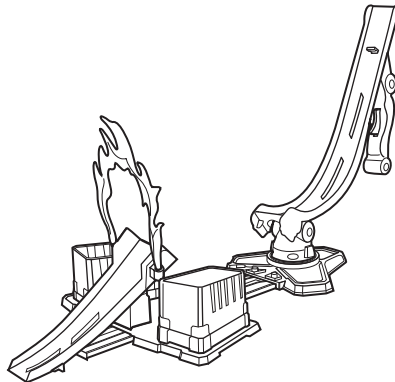
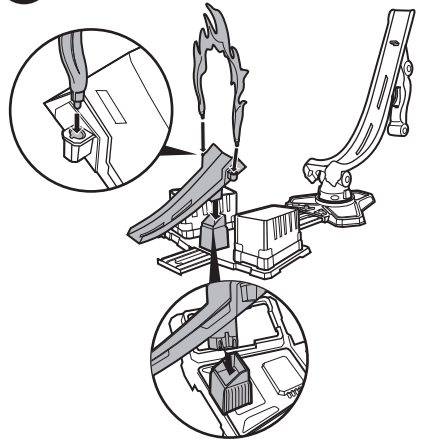
2



3

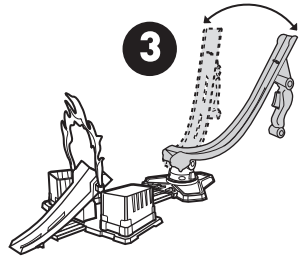
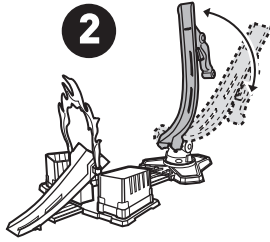
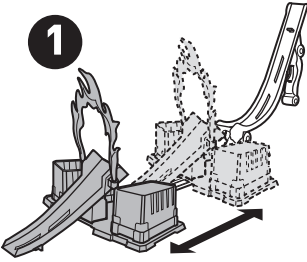


4

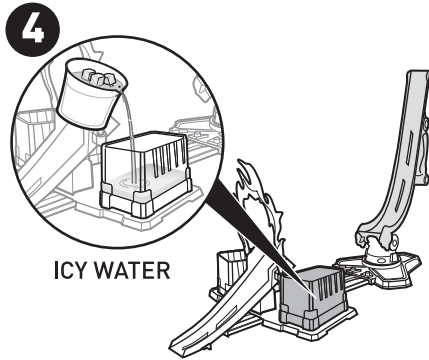


3

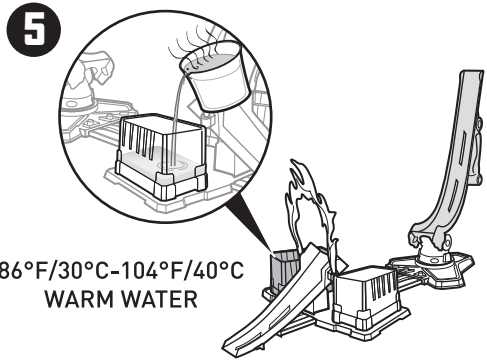
SET UP



To avoid burns, do not use water that is too hot, above 120°F (48°C).
For best performance of color change feature, please use icy water under 50°F (10°C).



ICY WATER



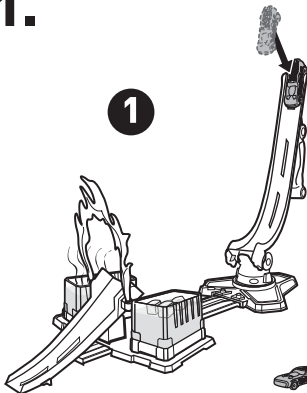
86°F/30°C-104°F/40°C
WARM WATER

Overfilling of reservoir may cause leakage.

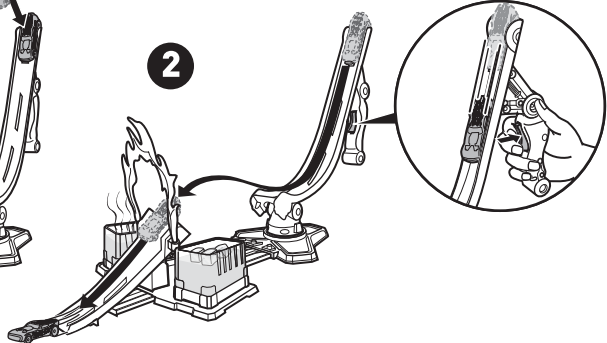
4

TO PLAY

1.



1

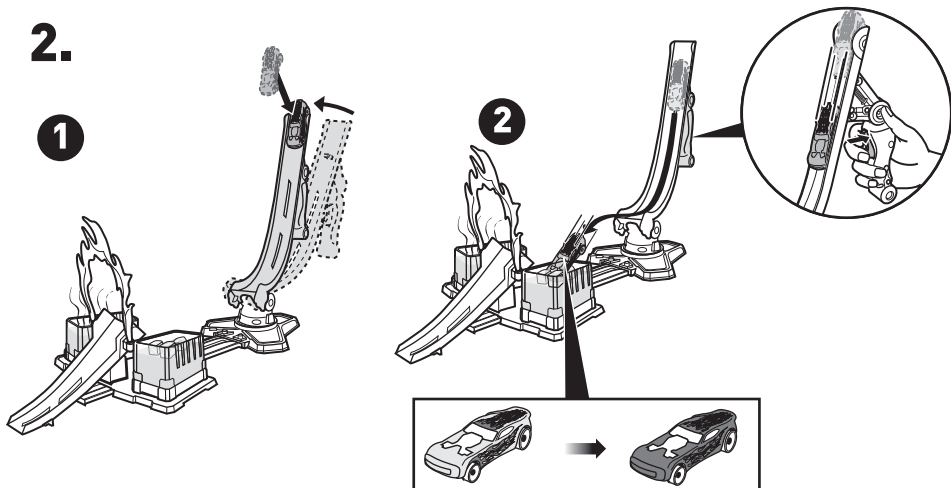


2

4

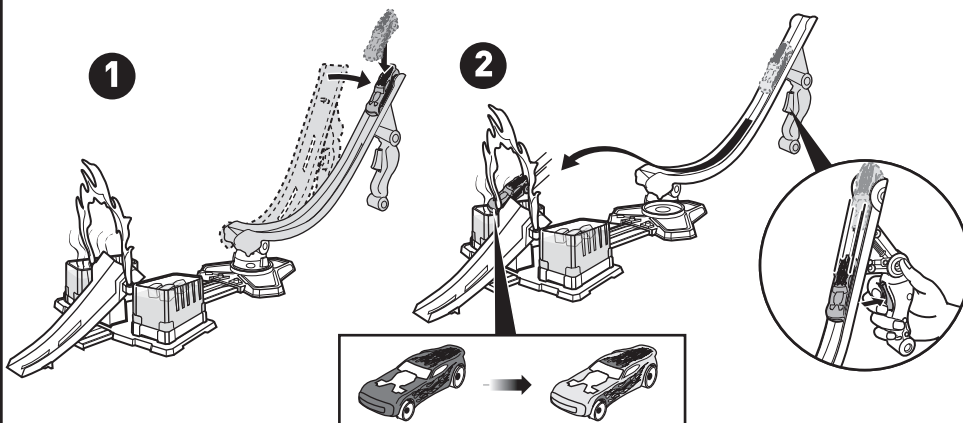
TO PLAY (CONTD.)

2.



Car transforms to cold water color.

3.



Car transforms to warm water color.

- Color change will last longer if you do not expose this toy to intense heat or direct sunlight for prolonged periods of time.
- Water toys sometimes get messy. Protect play surfaces before use.
- Drain, rinse, clean and dry all items thoroughly before storing.