



Talking Dora & Smartphone

Keep these instructions for future reference as they contain important information.

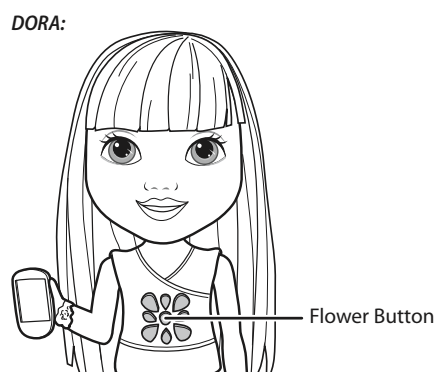
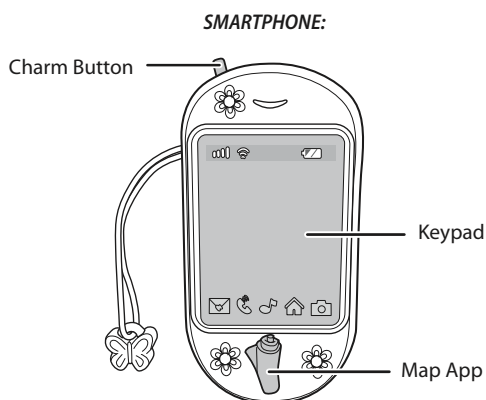
NOTE:

- This product operates at a higher volume in the package for demonstration purposes. When the smartphone is removed from the package, volume reduces to a more comfortable level for your child.
- For best results, make sure the smartphone is no further than 3 feet away from Dora while playing.
- Be sure to point the smartphone directly at Dora with nothing in between Dora and the smartphone.
- If the toy begins to operate erratically, you may need to reset the electronics by switching both power switches to the OFF position, waiting about 10 seconds, and then switching them both back to ON again.
- If the toy is not played with for more than one minute it will automatically shut-off to preserve battery life. To resume play, press the flower button on the front of Dora's dress first and then press the keypad on the smartphone.

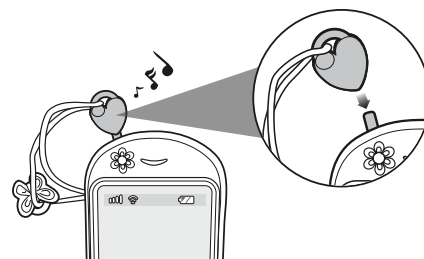
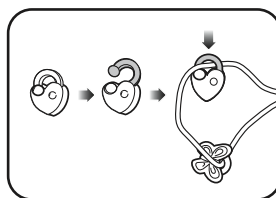
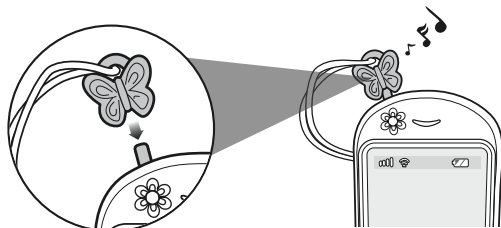
BEFORE YOU BEGIN

- Remove and discard the "Try Me" pull-tab located on the back of the smartphone next to the battery compartment (see battery diagram).
- Switch the power switch on both the smartphone and Dora to the "ON" position for normal play function. The ON/OFF switches are also located next to the battery compartments.

HOW TO PLAY



1. To begin play, press the jeweled flower button on the front of Dora's dress.
2. Now press the number keypad on the smartphone to begin a call. Dora will respond to the smartphone and they will talk to each other.
3. Keep pressing the keypad to move through the conversation.
4. At any time you can press the Map App button to hear phrases from Map App.
5. At any time you can press the charm button with your charm to hear special phrases.
6. You can also press the charm button using the other charms that come with your other Dora and Friends Dolls. The charms can also be attached to the smartphone. (Dora and Friends Dolls sold separately and subject to availability).



7. You can also play with Dora and your smartphone separately just by pressing the flower button on the front of Dora's dress and the keypad on the smartphone.

TROUBLESHOOTING GUIDE

SYMPTOM

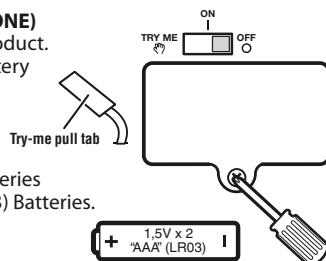
- Dora does not respond to the smartphone.

SOLUTION

- Make sure both power switches are switched to the "ON" position.
- Be sure to press the flower button on the front of Dora's dress every time you want to begin play.
- Re-start by switching the power switches "OFF" and then "ON" again.
- You may be beyond the maximum range of the remote controller. Make sure the smartphone is no more than 3 feet away from Dora.
- You may not have a clear path between the smartphone and Dora. This toy works best when there are no obstructions between the smartphone and Dora.
- Try dimming the lights in the room. Bright sunlight or fluorescent lights may affect the range of the remote controller.
- Battery power in the smartphone or Dora may be weak. Replace ALL the batteries in both the smartphone and Dora with fresh, alkaline batteries.

BATTERY INSTALLATION: (FOR SMARTPHONE)

Unscrew and lift away cover from back of product. Replace batteries as indicated inside the battery compartment. Batteries included are for demonstration purposes only. For longer life use only alkaline batteries. If the toy begins to operate erratically, you may need to reset the electronics by removing the batteries and reinstalling them. Requires 2 "AAA" (LR03) Batteries.

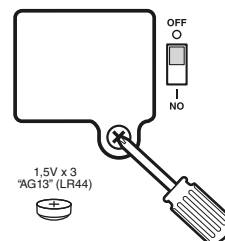


REQUIRED TOOL:

PHILLIPS SCREWDRIVER (NOT INCLUDED).

BATTERY INSTALLATION: (FOR DORA)

Unscrew and lift away cover from back of product. Replace batteries as indicated inside the battery compartment. Batteries included are for demonstration purposes only. For longer life use only alkaline batteries. If the toy begins to operate erratically, you may need to reset the electronics by removing the batteries and reinstalling them. Requires 3 "AG13" (LR44) Batteries.



BATTERY SAFETY INFORMATION

In exceptional circumstances batteries may leak fluids that can cause a chemical burn injury or ruin your product. To avoid battery leakage:

- Non-rechargeable batteries are not to be recharged.
- Rechargeable batteries are to be removed from the product before being charged.
- Rechargeable batteries are only to be charged under adult supervision.
- Do not mix alkaline, standard (carbon-zinc), or rechargeable (nickel-cadmium) batteries.
- Do not mix old and new batteries.
- Only batteries of the same or equivalent type as recommended are to be used.
- Batteries are to be inserted with the correct polarity.
- Exhausted batteries are to be removed from the product.
- The supply terminals are not to be short-circuited.
- Dispose of battery(ies) safely.
- Do not dispose of this product in a fire. The batteries inside may explode or leak.



Protect the environment by not disposing of this product with household waste (2002/96/EC). Check your local authority for recycling advice and facilities.

This equipment has been tested and found to comply with the limits for a Class B digital device, pursuant to part 15 of the FCC rules.

These limits are designed to provide reasonable protection against harmful interference in a residential installation. This equipment generates, uses and can radiate radio frequency energy and, if not installed and used in accordance with the instructions, may cause harmful interference to radio communications. However, there is no guarantee that interference will not occur in a particular installation. If this equipment does cause harmful interference to radio or television reception, which can be determined by turning the equipment off and on, the user is encouraged to try to correct the interference by one or more of the following measures: Reorient or relocate the receiving antenna.

Increase the separation between the equipment and receiver. Connect the equipment into an outlet on a circuit different from that to which the receiver is connected. Consult the dealer or an experienced radio/TV technician for help.

NOTE: Changes or modifications not expressly approved by the manufacturer responsible for compliance could void the user's authority to operate the equipment.

This device complies with part 15 of the FCC Rules. Operation is subject to the following two conditions:

- (1) This device may not cause harmful interference, and
- (2) this device must accept any interference received, including interference that may cause undesired operation.

• THIS CLASS B DIGITAL APPARATUS COMPLIES WITH CANADIAN ICES-003.

• CET APPAREIL NUMERIQUE DE LA CLASSE B EST CONFORME A LA NORME NMB-003 DU CANADA.

• Operation is subject to the following two conditions: (1) this device may not cause interference, and (2) this device must accept any interference, including interference that may cause undesired operation of the device.

• L'utilisation de ce produit est sujette aux conditions suivantes : (1) il ne doit pas produire de brouillage et (2) il doit pouvoir tolérer tout brouillage reçu, même si ce brouillage est susceptible de compromettre son fonctionnement.



CONSUMER ASSISTANCE

1-800-432-5437 (US & Canada)
1300 135 312 (Australia)

service.fisher-price.com

Fisher-Price, Inc., 636 Girard Avenue, East Aurora, NY 14052.
Hearing-impaired consumers: 1-800-382-7470.

Outside the United States:

Canada: Mattel Canada Inc., 6155 Freemont Blvd.,
Mississauga, Ontario L5R 3W2; www.service.mattel.com.

Great Britain: Mattel UK Ltd, Vanwall Business Park,
Maidenhead SL6 4UB. Helpline: 01628 500303.
www.service.mattel.com/uk

Mattel Europa B.V., Gondel 1, 1186 MJ Amstelveen, Nederland.

Australia: Mattel Australia Pty. Ltd., 658 Church Street,
Locked Bag #870, Richmond, Victoria 3121 Australia.

New Zealand: 16-18 William Pickering Drive,
Albany 1331, Auckland.

© 2014 Viacom International Inc. All Rights Reserved.
Nickelodeon, Dora and Friends, and all related titles,
logos and characters are trademarks of Viacom International Inc.

©2014 Mattel. All Rights Reserved.
® and ™ designate U.S. trademarks of Mattel,
except as noted. **PRINTED IN CHINA.**
Mattel East Asia Ltd., Room 503-09, North Tower,
World Finance Centre, Harbour City, Tsimshatsui, HK, China.

ID. BHT48-0920

Fisher-Price®