

Ages
6+



Spellbinding Secret Chest™

KEEPSAKE BOX

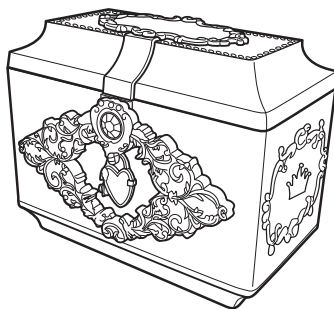
INSTRUCTION MANUAL

Keep these instructions for future reference as they contain important information.

CONTENTS:

- 1 Chest
- 6 Memory Keys
- 6 Reusable Memory Stickers
- 6 Character Cards

Please remove all components from the container and compare them to the contents list. If any items are missing, please call 1-800- 524-8697. Outside the U.S., please consult the listing of your local Mattel offices at the end of these instructions.



BATTERY INFORMATION:

- Requires 3 "AA" Alkaline batteries (not included).
- For longer life use only alkaline batteries.
- If unit malfunctions, check the battery installation.
- BATTERIES SHOULD BE CHANGED WHEN SOUND DISTORTS OR LOCKING MECHANISM MALFUNCTIONS.

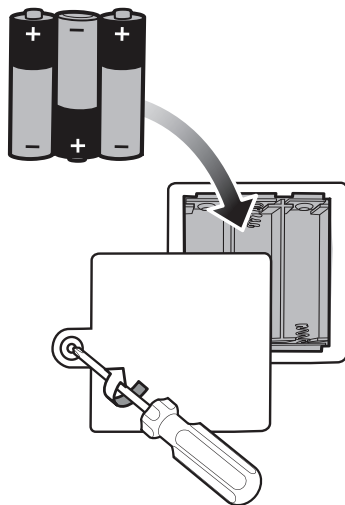
- AA + x 3
(Not Included)

ADULT SUPERVISION RECOMMENDED WHEN CHANGING BATTERIES.

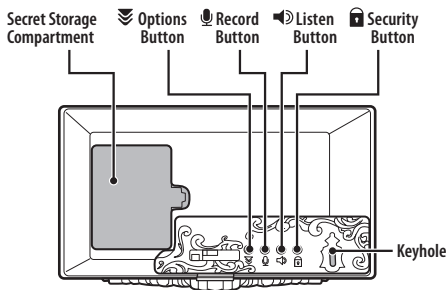
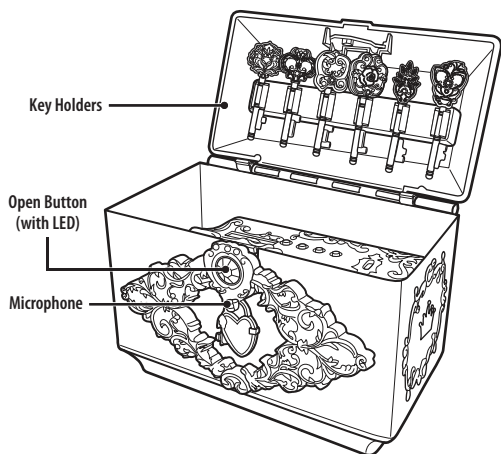
BATTERY SAFETY INFORMATION:

In exceptional circumstances batteries may leak fluids that can cause a chemical burn injury or ruin your product. To avoid battery leakage:

- Non-rechargeable batteries are not to be recharged.
- Rechargeable batteries are to be removed from the product before being charged.
- Rechargeable batteries are only to be charged under adult supervision.
- Do not mix alkaline, standard (carbon-zinc), or rechargeable (nickel-cadmium) batteries.
- Do not mix old and new batteries.
- Only batteries of the same or equivalent type as recommended are to be used.
- Batteries are to be inserted with the correct polarity.
- Exhausted batteries are to be removed from the product.
- The supply terminals are not to be short-circuited.
- Dispose of battery(ies) safely.
- Do not dispose of this product in a fire. The batteries inside may explode or leak.



SPELLBINDING SECRET CHEST™ FEATURES



SECRET KEYS



"Spellbinding Secret"



"Secret Heart's Desire"



"Secret To Sleep On"



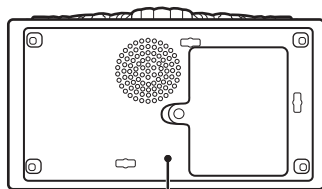
"Tea-rific Secret"



"Fairest Secret Of Them All"



"Big Bad Secret"



Reset Button

MATCHING REUSABLE MEMORY STICKERS



♥ BUTTON FUNCTIONS:

Open Button – Press to open the Spellbinding Secret Chest™ or to cancel what you are doing and return to the main menu.

Options Button – Press to scroll through the following options: your password, or the six different secrets you can record.

Record Button – Press to record whatever you selected with the Options Button – either your password or a secret.

Listen Button – Press to listen to whatever secret you selected with the Options Button.

Security Button – This button allows you to choose your level of protection. Press to toggle through the HIGH, LOW and OFF settings (See SECURITY SETTINGS).

NOTE: The default Security setting is LOW. If you want to change it to HIGH or OFF, you must use the button.

Reset Button – Press the Reset Button with the tip of a pen to reset your password or to open the Spellbinding Secret Chest™ without a password.

RECORDING TIPS: Speak clearly into the Microphone when recording. For best results, record in a quiet environment free of background noise, and from a distance of about an arm's length away (1 foot/30 cm).

♥ RECORDING YOUR PASSWORD:

1. Press the Options Button to scroll through the choices; when you hear the prompt for "Your Password" press the Record Button.
 2. When the "jewel" lights up, the mic is recording; clearly say your chosen password.
 3. You will then be asked to repeat your password. Be sure to speak clearly and say your password the EXACT same way each time! If spoken correctly, your password will be accepted. If not, you will be asked to try again.
- HINT #1:** Sometimes a short password works better than a longer one. "Crown" is easier to say correctly than "Rumplestiltskin."
- HINT #2:** If the Spellbinding Secret Chest™ does not accept your password after speaking it clearly and consistently, you may want to try adjusting your Security Setting to Low (See SECURITY SETTINGS).

NOTE: If you do not want to set a password, switch the Security Setting to OFF. The Open Button will then automatically open the Spellbinding Secret Chest™.

♥ USING YOUR PASSWORD:

When the chest is closed, press the Open Button and the chest will prompt you to “Please enter your password.” Hold the chest at arms length and try to say your password the same way you recorded it. This works best in a quiet environment, and you should speak in a calm, level voice.

♥ CHANGING YOUR PASSWORD:

Press the Reset Button with the tip of a pen to clear your current password, then record a new one following the prompts (See RECORDING YOUR PASSWORD).

♥ RECORDING YOUR SECRETS:

To record a secret, select a key. Each Secret Key has a theme that relates to an Ever After High™ character (ex. The Tea-rrific Secret Key belongs to Madeline Hatter™ – and the voice of each character will call out the name of their key!). You can choose the key by theme, or just whichever key you want.

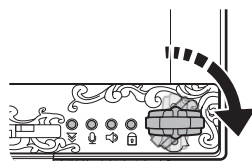
You can record up to 6 secrets: 1 secret per key. So remember to choose one that does not already have a secret unless you want to record over the current secret.

NOTE: The only way to erase a secret is to record over it with a new one.

Insert the key into the keyhole and turn it a ¼ turn clockwise. The Spellbinding Secret Chest™ will ask you to record your secret, and the Ever After High™ character associated with the selected key will call out its name.

You can also record a secret **without** a key. Press the Options Button until you hear the prompt for the Secret Key you want then press the Record Button.

When the LED is lit, record your memory.



Turn key clockwise

♥ USING THE MEMORY STICKERS:

There are reusable plastic stickers that correspond to the keys; use a matching sticker to label a keepsake. Now you'll be able to play back the secret memories of your keepsake anytime you want!

♥ PLAY BACK YOUR MEMORIES:

Insert a key into the keyhole and turn it a ¼ turn clockwise. If there is a secret recorded, the name of the Secret Key and the memory will play back instantly.

You can also play back a secret **without** a key. Press the Options Button until you hear the name for the Secret Key you want (ex. Fairest Secret of Them All) and then press the Listen Button.

♥ SECURITY SETTINGS:

You can adjust the Security Settings to suit the amount of protection you want. Press the Security Button to scroll through the levels of security:

High: On the High setting, you will need to speak your password more clearly and precisely in order to release the lock. This ensures that no one but you will be able to duplicate your password (a great way to keep out nosy intruders!). On this setting, be sure to say your password the EXACT same way each time (be consistent).

Low: On the Low setting, there is a lower level of protection. It is a good level to try if you are having difficulty opening the lock, since you do not have to be as exact. But beware! A snoop who has memorized your password may be able to use it to open your Spellbinding Secret Chest™.

Off: When your Spellbinding Secret Chest™ is in the Off setting, it will open without a password; simply press the Open Button.

NOTE: The first time you use your Spellbinding Secret Chest™ it will be set to Low security. You will need to adjust the setting if you want it on High or Off.

♥ THE SECRET STORAGE COMPARTMENT:

The Secret Storage Compartment is located inside the Spellbinding Secret Chest™ at the bottom. Use it to stash pictures, jewelry, whatever you want to keep safe!

TROUBLESHOOTING

If you are having difficulty opening your Spellbinding Secret Chest™ with your password, consider adjusting your security setting (See SECURITY SETTINGS).

When speaking your password, find a quiet area and hold the chest at arm's length from you (1 foot/30 cm), and speak without shouting. If that doesn't work, try resetting the chest by pressing the Reset Button and record a shorter password.

Sometimes, a build-up of static electricity (from carpets, etc.), or an environment with radio frequency interference, may cause the unit to malfunction. If you encounter any issues, try resetting your password by pressing the Reset Button.

This device complies with Part 15 of the FCC rules

Operation is subject to the following two conditions:

- (1) This device may not cause harmful interference, and
 - (2) this device must accept any interference received, including interference that may cause undesired operation.
- This equipment has been tested and found to comply with the limits for a Class B digital device, pursuant to Part 15 of the FCC rules. These limits are designed to provide reasonable protection against harmful interference in a residential installation. This equipment generates uses and can radiate radio frequency energy and, if not installed and used in accordance with the instructions, may cause harmful interference to radio communications. However, there is no guarantee that interference will not occur in a particular installation. If this equipment does cause harmful interference to radio or television reception, which can be determined by turning the equipment off and on, the user is encouraged to try to correct the interference by one or more of the following measures:
 - Reorient or relocate the receiving antenna. Increase the separation between the equipment and receiver.
 - Connect the equipment into an outlet on a circuit different from that to which the receiver is connected.
 - Consult the dealer or an experienced radio/TV technician for help.

NOTE: Changes or modifications not expressly approved by the manufacturer responsible for compliance could void the user's authority to operate the equipment.



Protect the environment by not disposing of this product with household waste (2002/96/EC). Check your local authority for recycling advice and facilities.

BJH43-0920



©2013 Mattel. All Rights Reserved.

Mattel, Inc., 636 Girard Avenue, East Aurora, NY 14052, U.S.A. Consumer Relations 1-800-524-8697.

Mattel U.K. Ltd., Vanwall Business Park, Maidenhead SL6 4UB. Helpline 01628 500303.

Mattel Australia Pty., Ltd., Richmond, Victoria. 3121. Consumer Advisory Service - 1300 135 312.

Mattel East Asia Ltd., Room 503-09, North Tower, World Finance Centre, Harbour City, Tsimshatsui, HK, China.

Diimport & Diedarkan Oleh: Mattel SEA Ptd Ltd.(993532-P) Lot 13.5, 13th Floor, Menara Lien Hoe, Persiaran

Tropicana Golf Country Resort, 47410 PJ. Malaysia. Tel:03-78803817, Fax:03-78803867.

Mattel Europa B.V., Gondel 1, 1186 MJ Amstelveen, Nederland.