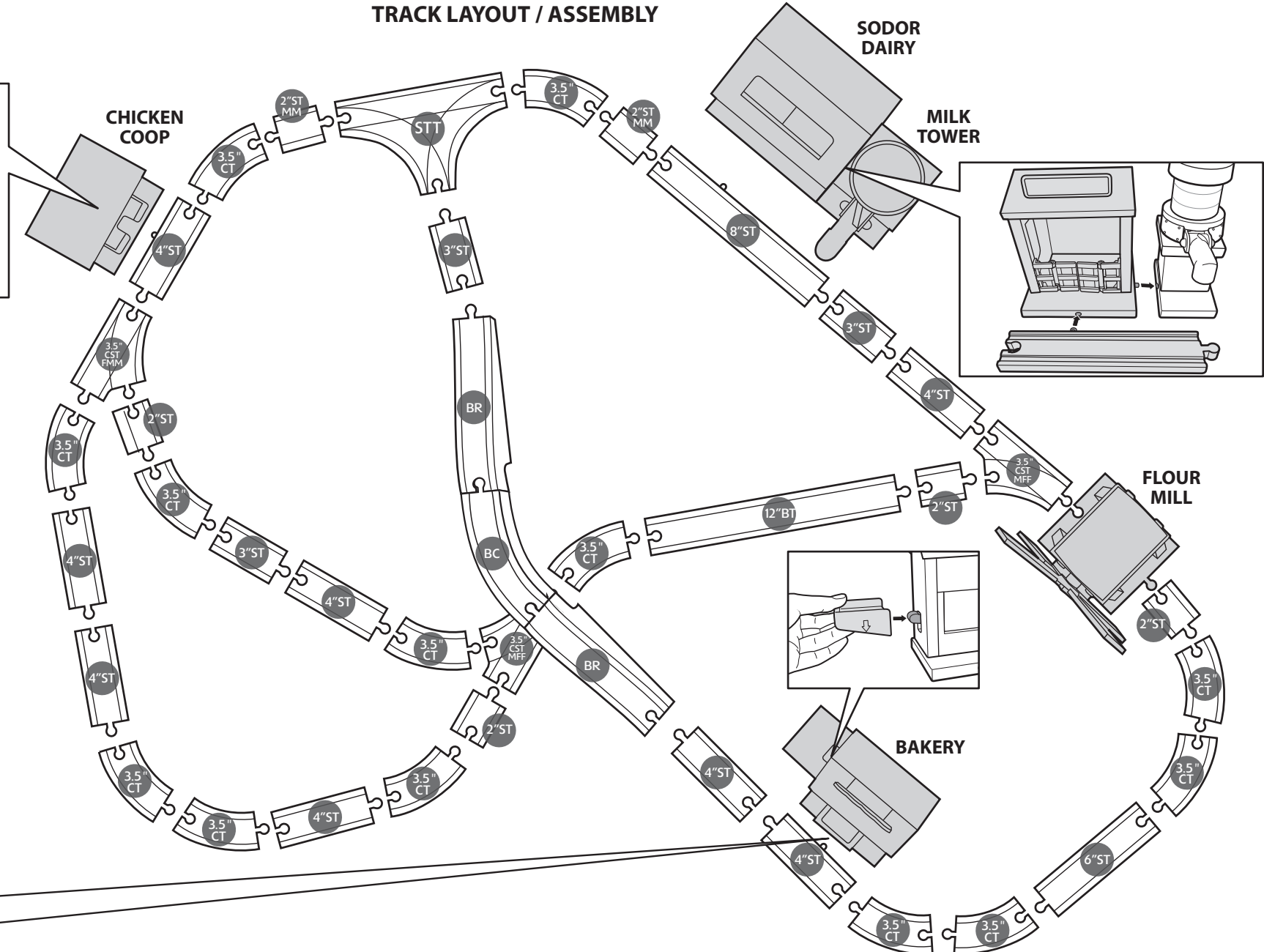
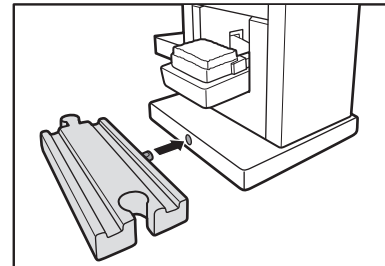




Keep these instructions for future reference as they contain important information.

**BC** = Bridge Crossing  
**BR** = Bridge Riser  
**BT** = Bumpy Track  
**CST** = Curved Swith Track  
**CT** = Curved Track  
**F** = Female  
**M** = Male  
**ST** = Straight Track  
**STT** = Switch T-Track

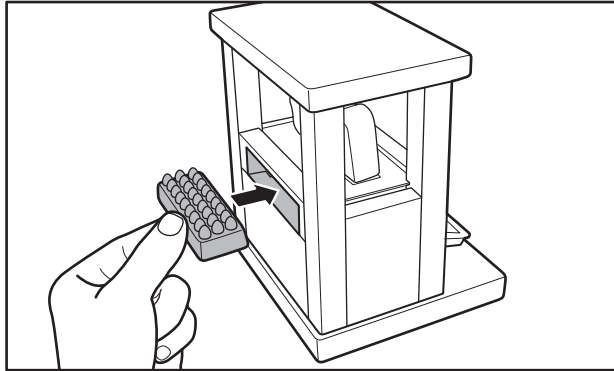


Thomas has to gather all the ingredients and deliver them to the bakery in time for a birthday surprise!

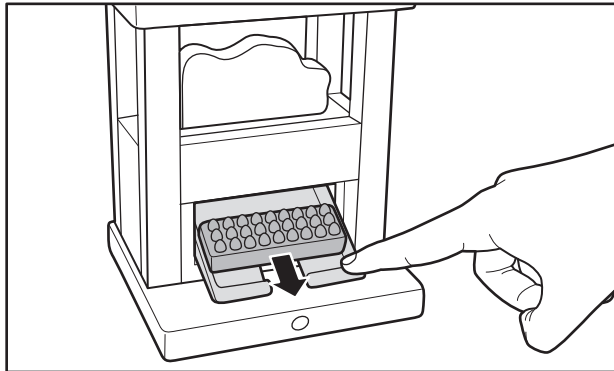
## HOW TO PLAY

### CHICKEN COOP:

Load the egg crate into the back of the chicken coop.

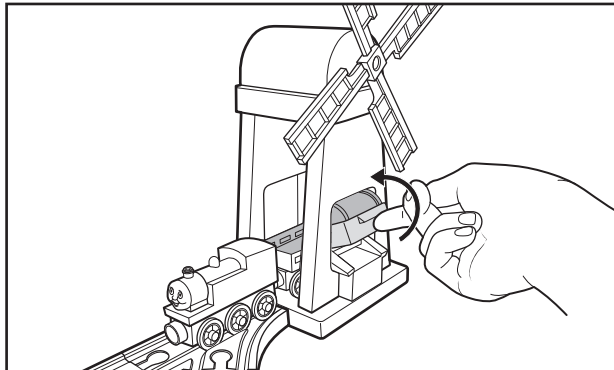


Press down on the red tray in the front of the chicken coop to deliver the eggs.



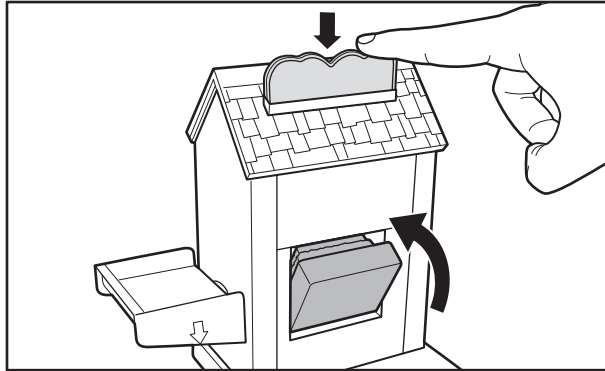
### FLOUR MILL:

Load the flour barrel onto the cargo car by tipping the red loader.

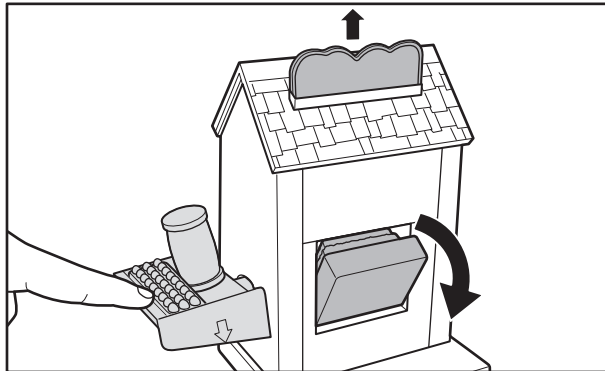


### BAKERY:

Press down on the balloons to reset.

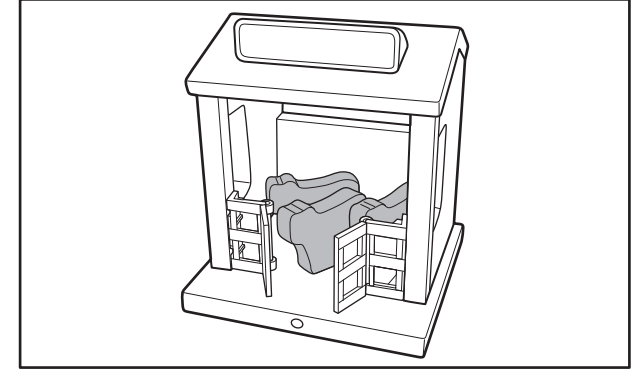


Place the egg crate and flour onto the red tray and press down to reveal the birthday cake and balloons!

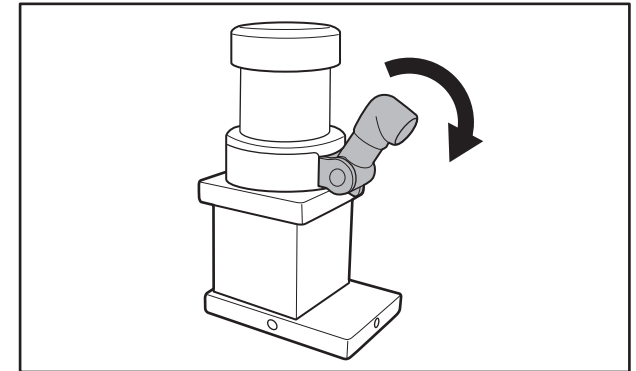


### SODOR DAIRY:

Place the cows in the barn.



Lower the spigot to see the milk level change in the tower.



Thomas the Tank Engine & Friends™



CREATED BY BRITT ALLCROFT

Based on the Railway Series by The Reverend W Awdry. ©2013 Gullane (Thomas) Limited. Thomas the Tank Engine & Friends and Thomas & Friends are trademarks of Gullane (Thomas) Limited.

©2013 HIT Entertainment Limited. HIT and the HIT logo are trademarks of HIT Entertainment Limited.

©2013 Mattel. All Rights Reserved. ® and ™ designate U.S. trademarks of Mattel, except as noted.

**PRINTED IN CHINA.**

Mattel East Asia Ltd., Room 503-09, North Tower,  
World Finance Centre, Harbour City,  
Tsimshatsui, HK, China.



ID. BJP83-0920

?

**CONSUMER ASSISTANCE**

1-800-432-5437 (US & Canada)  
1300 135 312 (Australia)

**service.fisher-price.com**

Fisher-Price, Inc., 636 Girard Avenue, East Aurora, NY 14052.  
Hearing-impaired consumers: 1-800-382-7470.

**Outside the United States:**

Canada: Mattel Canada Inc., 6155 Freemont Blvd.,  
Mississauga, Ontario L5R 3W2; [www.service.mattel.com](http://www.service.mattel.com).

Great Britain: Mattel UK Ltd, Vanwall Business Park,  
Maidenhead SL6 4UB. Helpline: 01628 500303.  
[www.service.mattel.com/uk](http://www.service.mattel.com/uk)

Mattel Europa B.V., Gondel 1, 1186 MJ Amstelveen, Nederland.

Australia: Mattel Australia Pty. Ltd., 658 Church Street,  
Locked Bag #870, Richmond, Victoria 3121 Australia.

New Zealand: 16-18 William Pickering Drive,  
Albany 1331, Auckland.