



Tropical Bird & Beach House

- INCLUDES:**
 1 Plastic AmiGami™ Tropical Bird
 1 AmiGami™ Beach House
 70 AmiGami™ Paper Parts
 65 Reusable* Stickers
 1 Curling Tool
 12 Pins & Caps

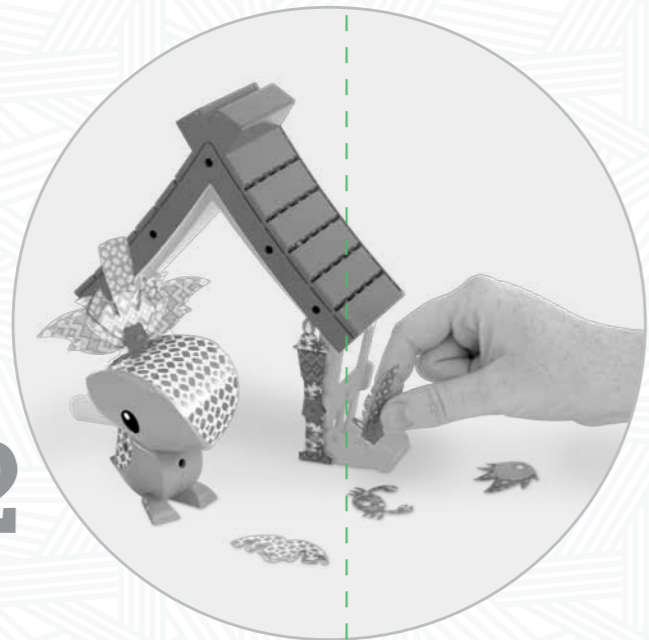
*Stickers can be reused up to 3 times

6+



1

Punch out the Paper Parts and strips.



2

Pins with parts fit into designated holes on the figure. Paper Parts slide into slats on the house.



3

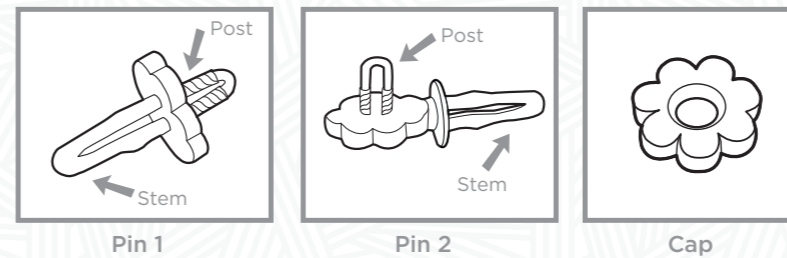
Curl strip before or after you put them on.

Make YOUR AmiGami™ Tropical Bird & Beach House any way YOU want!



Tips for Designing:

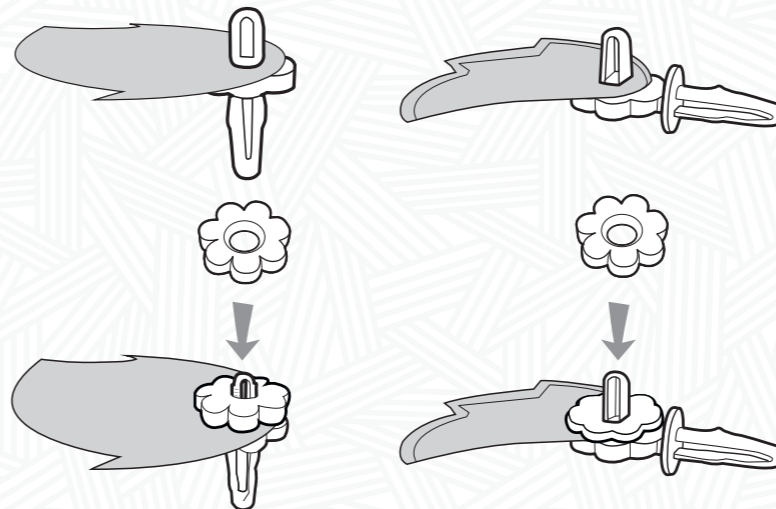
Using Pins:



Pin 1

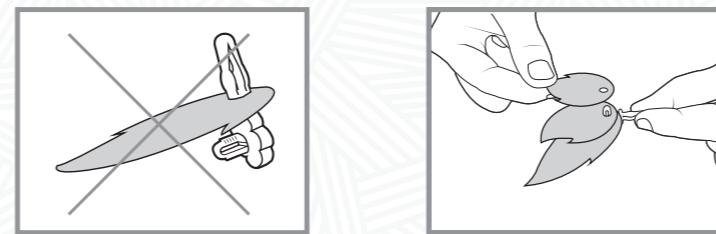
Pin 2

Cap

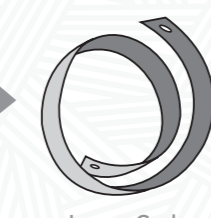
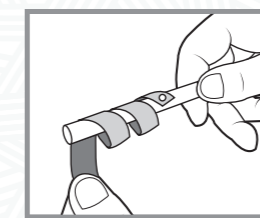
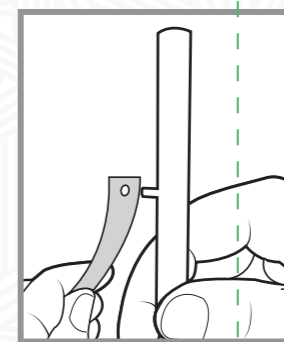


Be sure to put the paper parts on the post and NOT on the stem.

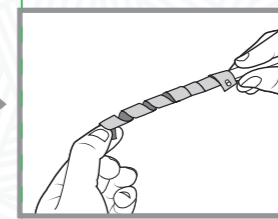
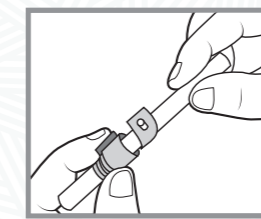
Pins can hold more than one paper part.



Curling AmiGami™ Paper:

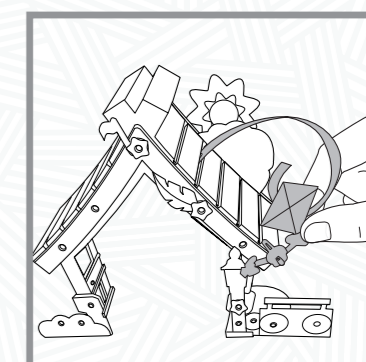
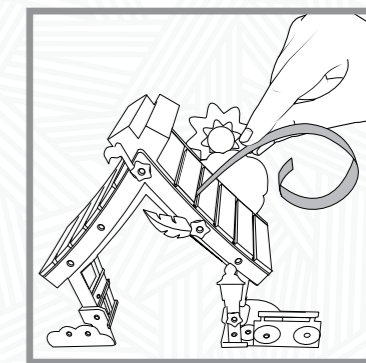
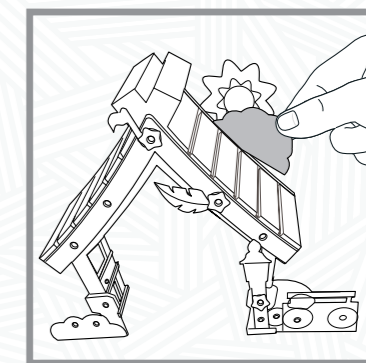


Loose Curl



Tight Curl

Decorating Beach House:



©2014 Mattel. All Rights Reserved. Mattel, Inc., 636 Girard Avenue, East Aurora, NY 14052, U.S.A. Consumer Services 1-800-524-8697. Mattel U.K. Ltd., Vanwall Business Park, Maidenhead SL6 4UB. Helpline 01628 500303. Mattel Australia Pty. Ltd., Richmond, Victoria, 3121 Consumer Advisory Service - 1300 135 312. Mattel East Asia Ltd., Room 503-09, North Tower, World Finance Centre, Harbour City, Tsimshatsui, HK, China. Dimpont & Diedaerkan Oleh: Mattel Southeast Asia Pte. Ltd., No 19-1, Tower 3 Avenue 7, Bangsar South City, No 8, Jalan Kerinchi, 59200 Kuala Lumpur, Malaysia. Tel: 03-78803817, Fax: 03-78803867.

Asst: BHN46
BLV48-T00298060G1_DOM

