

**Fisher-Price®**

# Little Mommy™

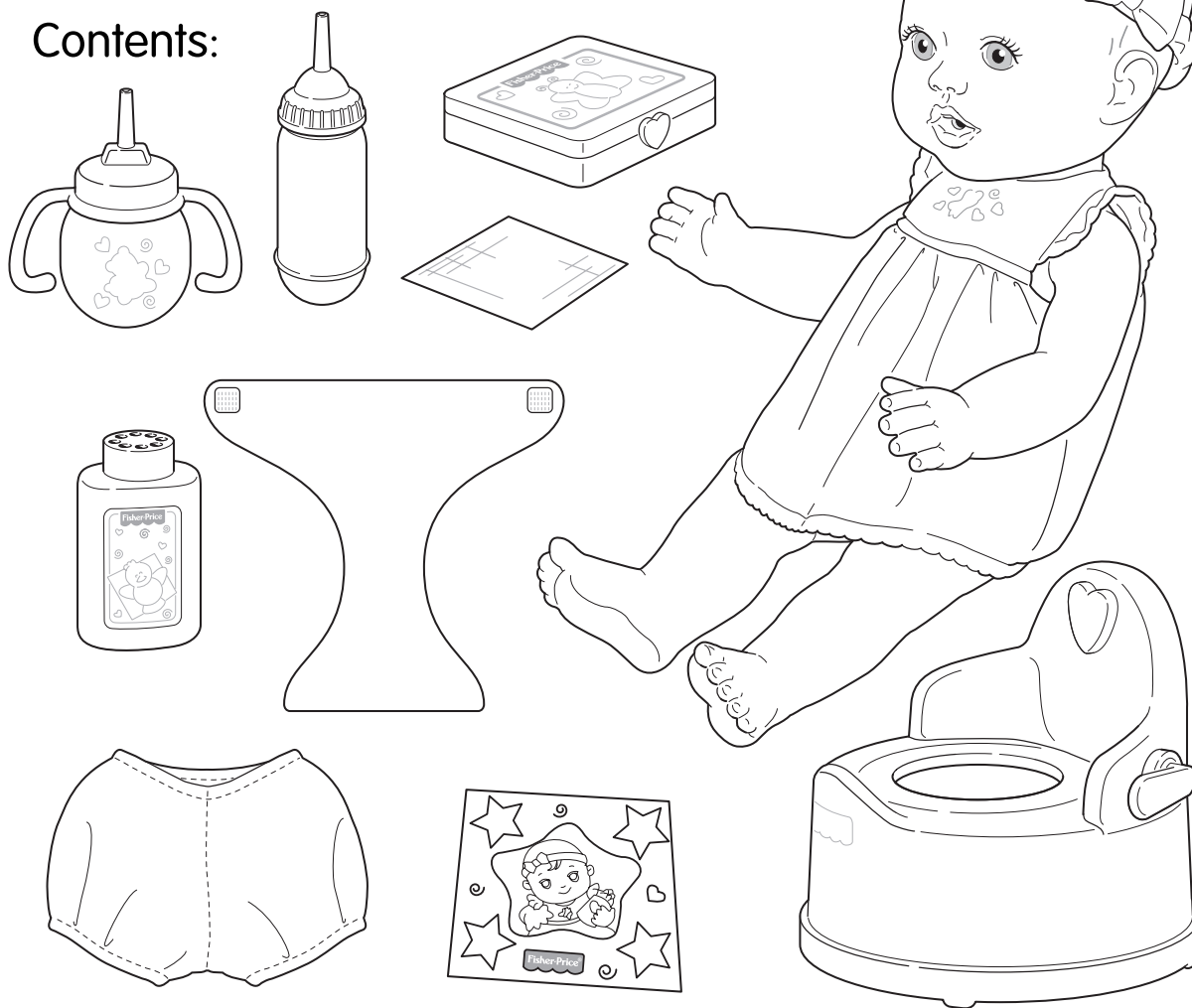
Nurture, Love, Grow™  
**Instructions**



C0776-0920

2+

**Contents:**



Please remove everything from the package and compare to the contents shown here.

If any items are missing, please call 1-800-524-TOYS.

Keep these instructions for future reference as they contain important information.

ADULTS NOTE: Wire cutters are needed to remove the cable ties.

Colors and decorations may vary.

© 2003 Mattel, Inc. All Rights Reserved.

Fisher-Price product designs shown were created by Fisher-Price, Inc., a subsidiary of Mattel, Inc.

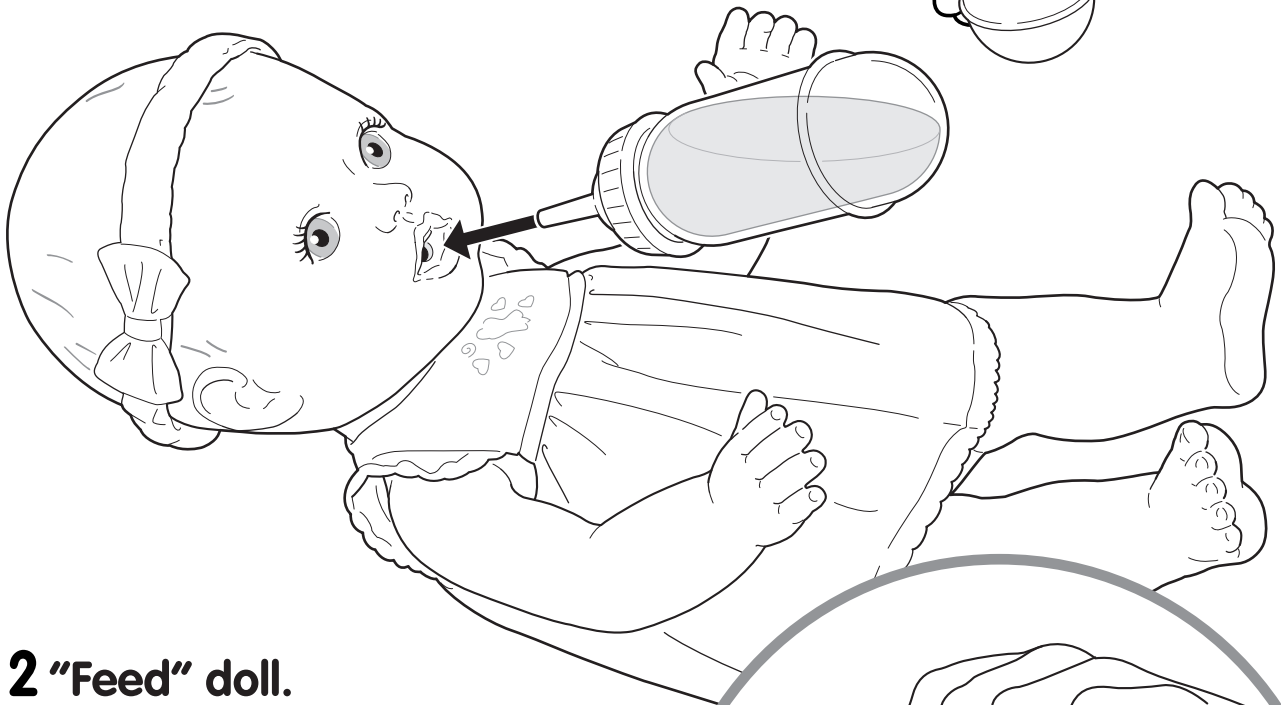
# Play Time!

Water toys sometimes get messy. Protect play surfaces before use.  
After each use, place the doll on the potty to drain the water, then rinse, clean, and dry all items.

## 1 Fill doll's bottle or sipping cup with tap water.

Close tightly.

*NO OTHER LIQUID is to be used aside from plain water.*

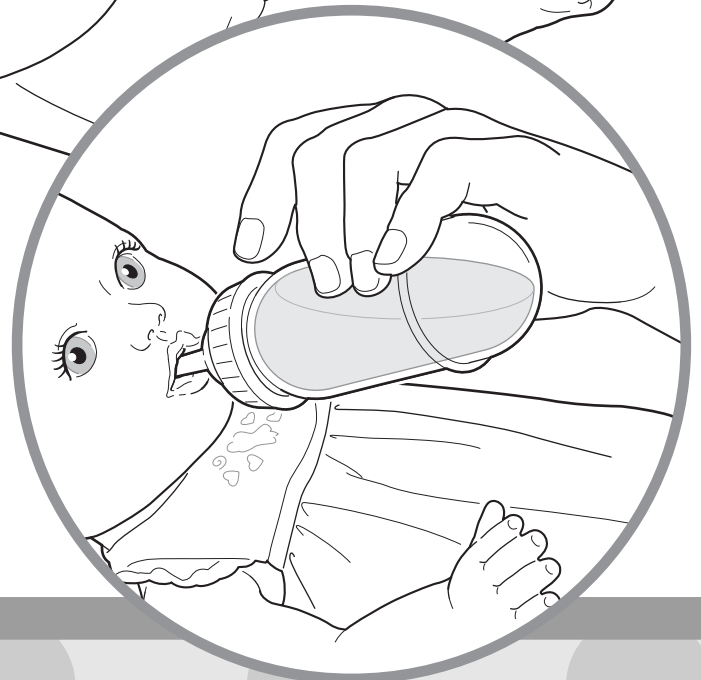


## 2 "Feed" doll.

Insert nipple all the way into doll's mouth in such a way that the tip goes into the hole located inside.

"Feed" your doll with her bottle or sipping cup. Press into her mouth and continually squeeze the bottle or cup gently. If water leaks out while feeding, insert nipple further into doll's mouth.

Do not overfeed, one bottle or cup is enough.



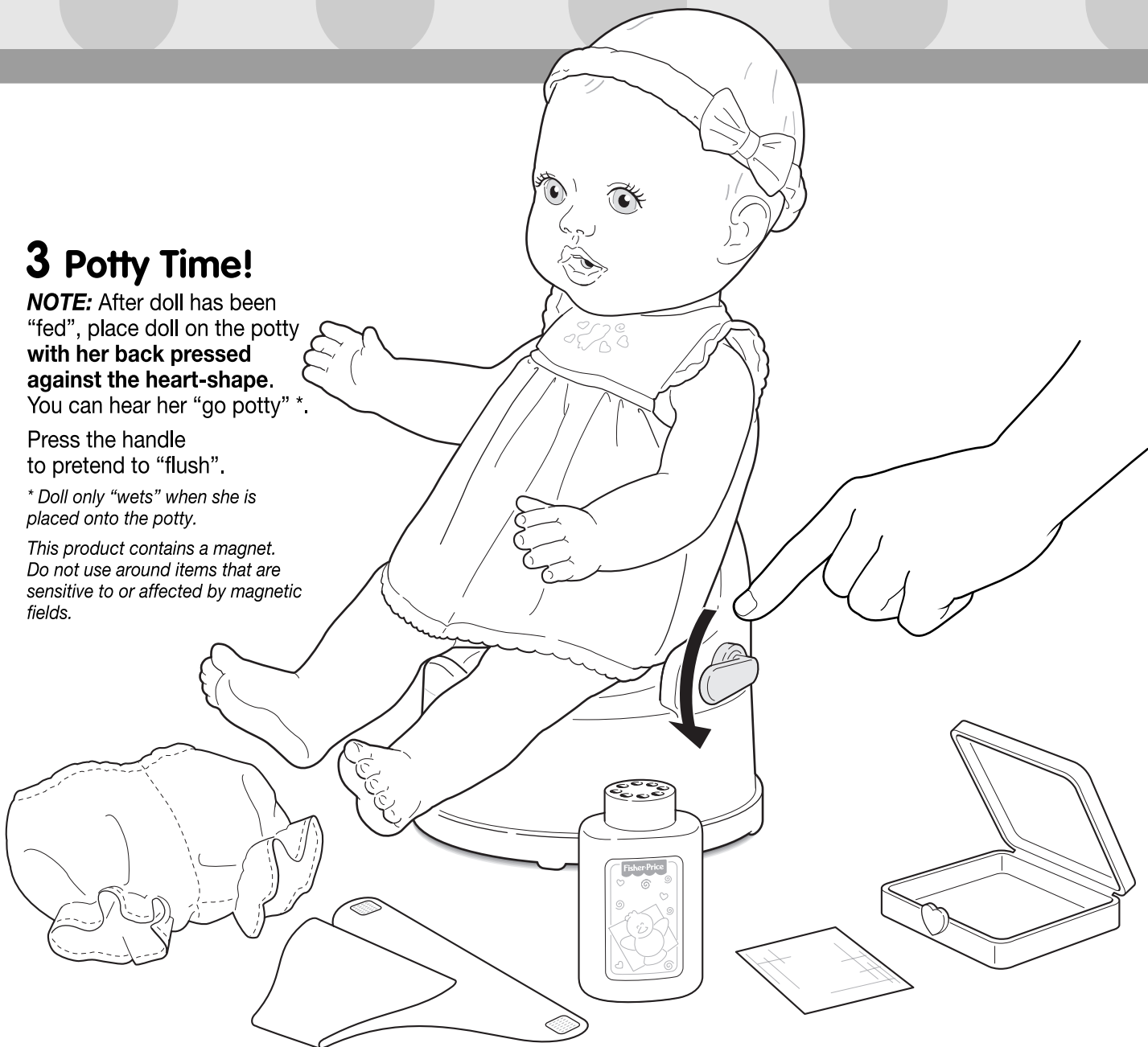
### 3 Potty Time!

**NOTE:** After doll has been “fed”, place doll on the potty with her back pressed against the heart-shape. You can hear her “go potty” \*.

Press the handle to pretend to “flush”.

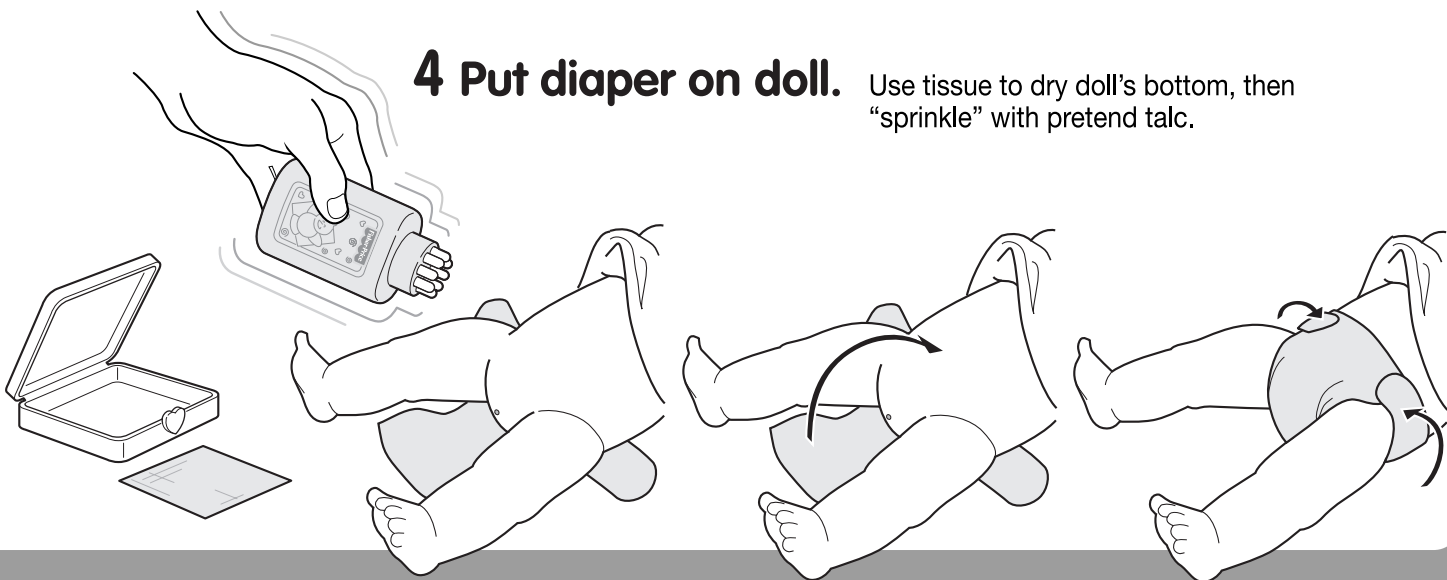
*\* Doll only “wets” when she is placed onto the potty.*

*This product contains a magnet. Do not use around items that are sensitive to or affected by magnetic fields.*

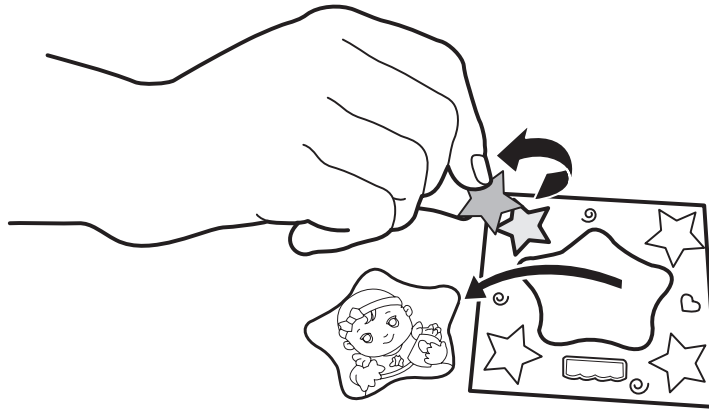


### 4 Put diaper on doll.

Use tissue to dry doll's bottom, then “sprinkle” with pretend talc.



## Play Time! (continued)



## Clean & Store

*Surface washable only.*

*After each use, place the doll on the potty to drain the water, then rinse, clean, and dry all items.*

THIS TOY IS FOR DOLL ONLY. IT IS NOT INTENDED FOR CHILD USE.  
Fits approx. 14" (35. cm) Little Mommy™ Doll.

Mattel Canada Inc., Mississauga, Ontario L5R 3W2.  
You may call us free at 1-800-665-6288.

Mattel U.K. Ltd., Vanwall Business Park, Maidenhead SL6 4UB.  
Helpline 01628500303.

Mattel Australia Pty., Ltd., Richmond, Victoria. 3121.  
Consumer Advisory Service - 1300 135 312.

Mattel East Asia Ltd, Room 1106, South Tower,  
World Finance Centre, Harbour City, Tsimshatsui, HK, China

Diimport & Diedarkan Oleh: Mattel SEA Ptd Ltd.(993532-P) Lot  
13.5, 13th Floor, Menara Lien Hoe, Persiaran Tropicana Golf  
Country Resort, 47410 PJ. Tel:03-78803817, Fax:03-78803867.

Mattel, Inc., El Segundo, CA 90245 U.S.A.  
Consumer Affairs 1 (800) 524-TOYS.

### CONSUMER INFORMATION

**YOU CAN TELL IT'S MATTEL!™** CALL us toll-free or write with any comments or questions about our products or service. Monday-Friday 8:00 a.m.-6:00 p.m. Eastern Time. Outside U.S.A., see telephone directory for Mattel listing.

**Consumer Relations, Mattel, Inc.**  
333 Continental Blvd.  
El Segundo, CA 90245 USA

**1(800) 524-TOYS**

**WE ARE DEDICATED TO QUALITY PRODUCTS.**