

6+

FLAVAS



C1952-0920G3

INSTRUCTIONS

P. BO™ Doll



CONTENTS

Please remove everything from the package and compare to the contents shown here. If any items are missing, please call 1-800-524-TOYS.

Keep these instructions for future reference as they contain important information.

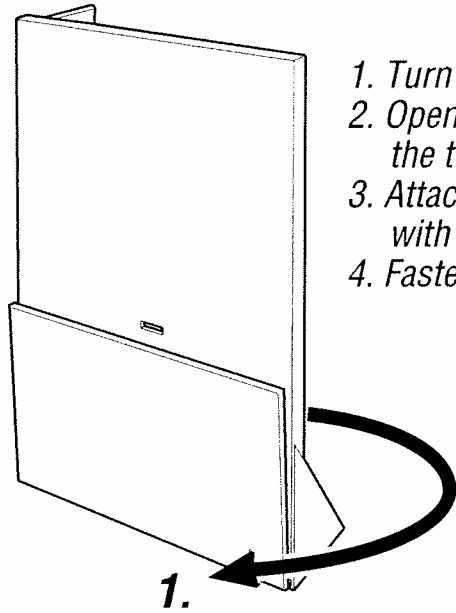
Fashions, colors and decorations may vary from those shown.

Retain this address for future reference:

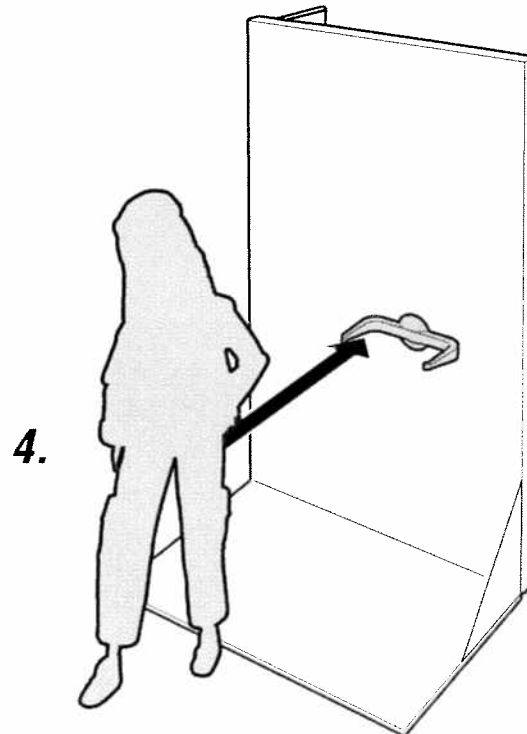
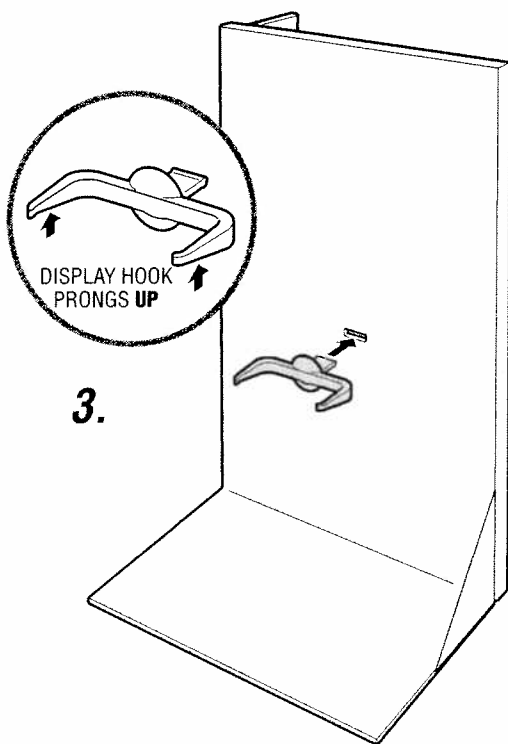
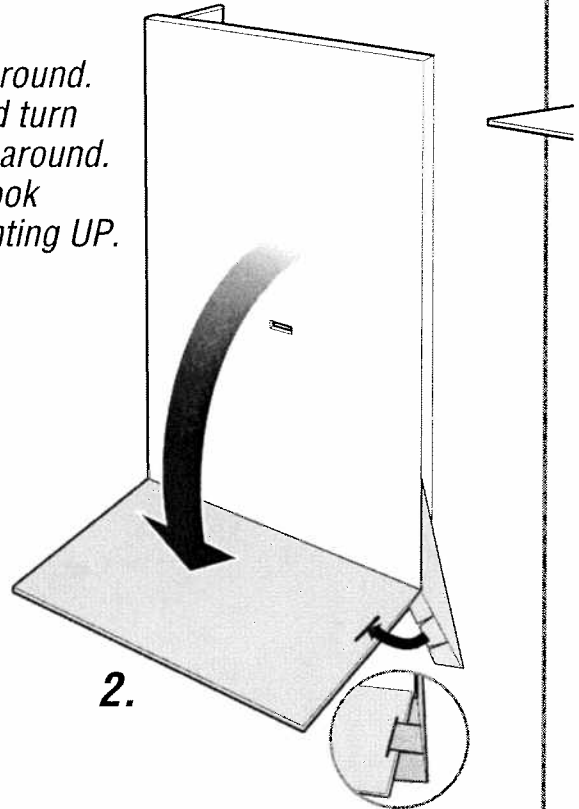
© 2003 Mattel, Inc., El Segundo, CA 90245 U.S.A. All Rights Reserved.

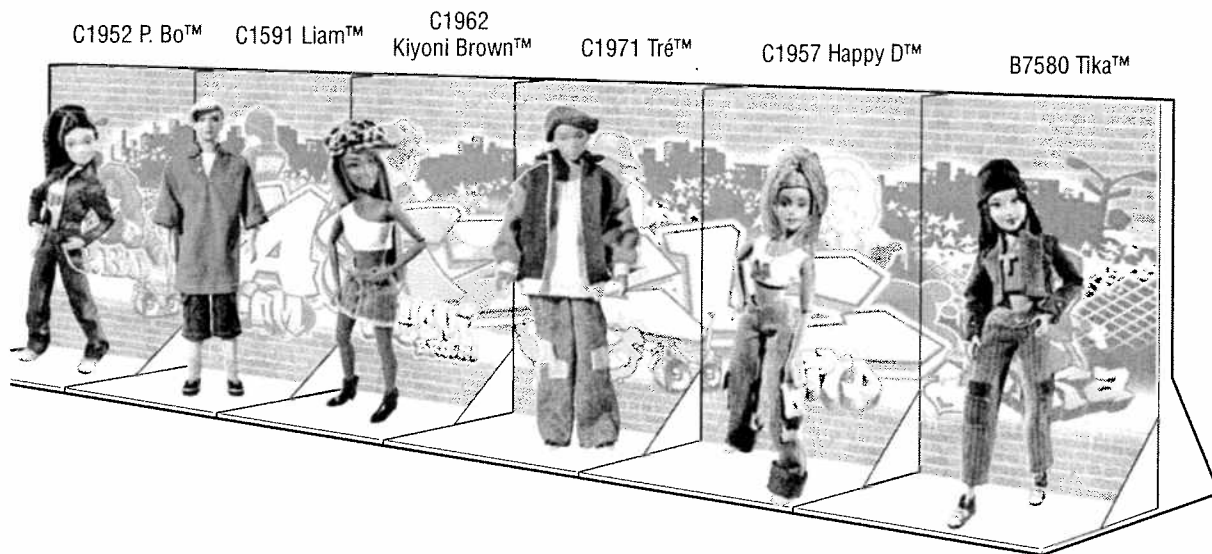
DISPLAY

Create a spot for your doll to "hang out" on the block.



1. Turn doll stand around.
2. Open the flap and turn the triangle side around.
3. Attach display hook with prongs pointing UP.
4. Fasten the doll.





GET THE WHOLE CREW AND PLACE THEM
SIDE BY SIDE FOR A COOL MURAL!

NOW, THEY CAN "HANG" TOGETHER!

*Dolls with their doll stand sold separately and subject to availability.
Fashions, colors and decorations may vary from those shown.*

Mattel Canada Inc., Mississauga, Ontario L5R 3W2. You may call us free at 1-800-665-6288.

Mattel U.K. Ltd., Vanwall Business Park, Maidenhead SL6 4UB.
Helpline 01628500303.

Mattel Australia Pty., Ltd., Richmond, Victoria. 3121.
Consumer Advisory Service - 1300 135 312.

Mattel East Asia Ltd, Room 1106, South Tower,
World Finance Centre, Harbour City, Tsimshatsui, HK, China

Diimport & Diedarkan Oleh: Mattel SEA Ptd Ltd.(993532-P)
Lot 13.5, 13th Floor, Menara Lien Hoe, Persiaran Tropicana Golf
Country Resort, 47410 PJ. Tel:03-78803817, Fax:03-78803867.

Mattel, Inc., El Segundo, CA 90245 U.S.A. Consumer Affairs
1 (800) 524-Toys.

CONSUMER INFORMATION

YOU CAN TELL IT'S MATTEL!™ CALL us toll-free or write with any comments or questions about our products or service. Monday-Friday 8:00 a.m.-6:00 p.m. Eastern Time. Outside U.S.A., see telephone directory for Mattel listing.

Consumer Relations, Mattel, Inc.
333 Continental Blvd.
El Segundo, CA 90245 USA

1(800) 524-TOYS

WE ARE DEDICATED TO QUALITY PRODUCTS.