

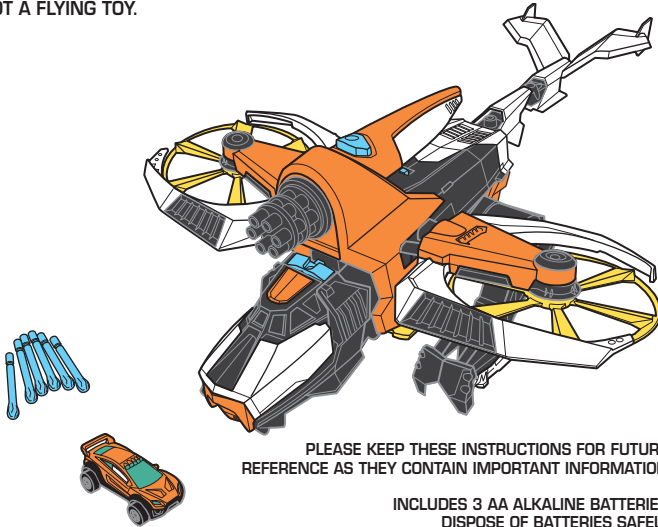
**MATCHBOX**  
ON A MISSION™

**4+**  
**MATTEL**  
CCW77-0970  
1100308782-DOM G1

**INSTRUCTIONS:**  
MISSION™ ELITE RESCUE™ STRIKE HAWK™

## CONTENTS

NOT A FLYING TOY.



PLEASE KEEP THESE INSTRUCTIONS FOR FUTURE  
REFERENCE AS THEY CONTAIN IMPORTANT INFORMATION.

INCLUDES 3 AA ALKALINE BATTERIES.  
DISPOSE OF BATTERIES SAFELY.

©2015 Mattel. All Rights Reserved. Mattel, Inc., 636 Girard Avenue, East Aurora, NY 14052, U.S.A. Consumer Services  
1-800-524-8697. Mattel U.K. Ltd., Vanwall Business Park, Maidenhead SL6 4UB. Helpline 01628 500303. Mattel Australia  
Pty. Ltd., Richmond, Victoria, 3121. Consumer Advisory Service - 1300 135 312. Mattel East Asia Ltd., Room 503-09, North  
Tower, World Finance Centre, Harbour City, Tsimshatsui, HK, China. Tel.: (852) 3185-6500. Dimport & Diederikson Osh:  
Mattel Southeast Asia Pte. Ltd., No 19-1, Tower 3 Avenue 7, Bangsar South City, No 8, Jalan Kerinchi, 59200 Kuala Lumpur,  
Malaysia. Tel: 03-78803817, Fax: 03-78803867.  
**SERVICE.MATTEL.COM**

## 1 BATTERY REPLACEMENT

- Batteries included are for demonstration purpose only.
- Replace batteries when propellers slow down or sounds distort.
- Push button with a pen (not included), then lift mid-section of chopper to separate parts. (see 1)
- Pull mid-section and propellers away from the body. (see 2)
- Flip mid-section over to access the battery compartment. Unscrew the battery cover with a Phillips head screwdriver (not included). Remove batteries and dispose of them safely.
- Install 3 new AA (LR6) alkaline batteries (not included) in the orientation (+/-) shown. Replace battery cover and tighten screw. For longer life, use alkaline batteries. (see 3)
- Fold propellers into the horizontal position. (see 4)
- Rotate and center the handle. (see 5)
- Slide mid-section and propellers back into the body. Make sure the moving joints are aligned correctly or else the parts will not connect. (see 6)
- Press the mid-section down to lock parts together. (see 7)
- When exposed to an electrostatic source, the product may malfunction. To resume normal operation, remove and re-install the batteries.

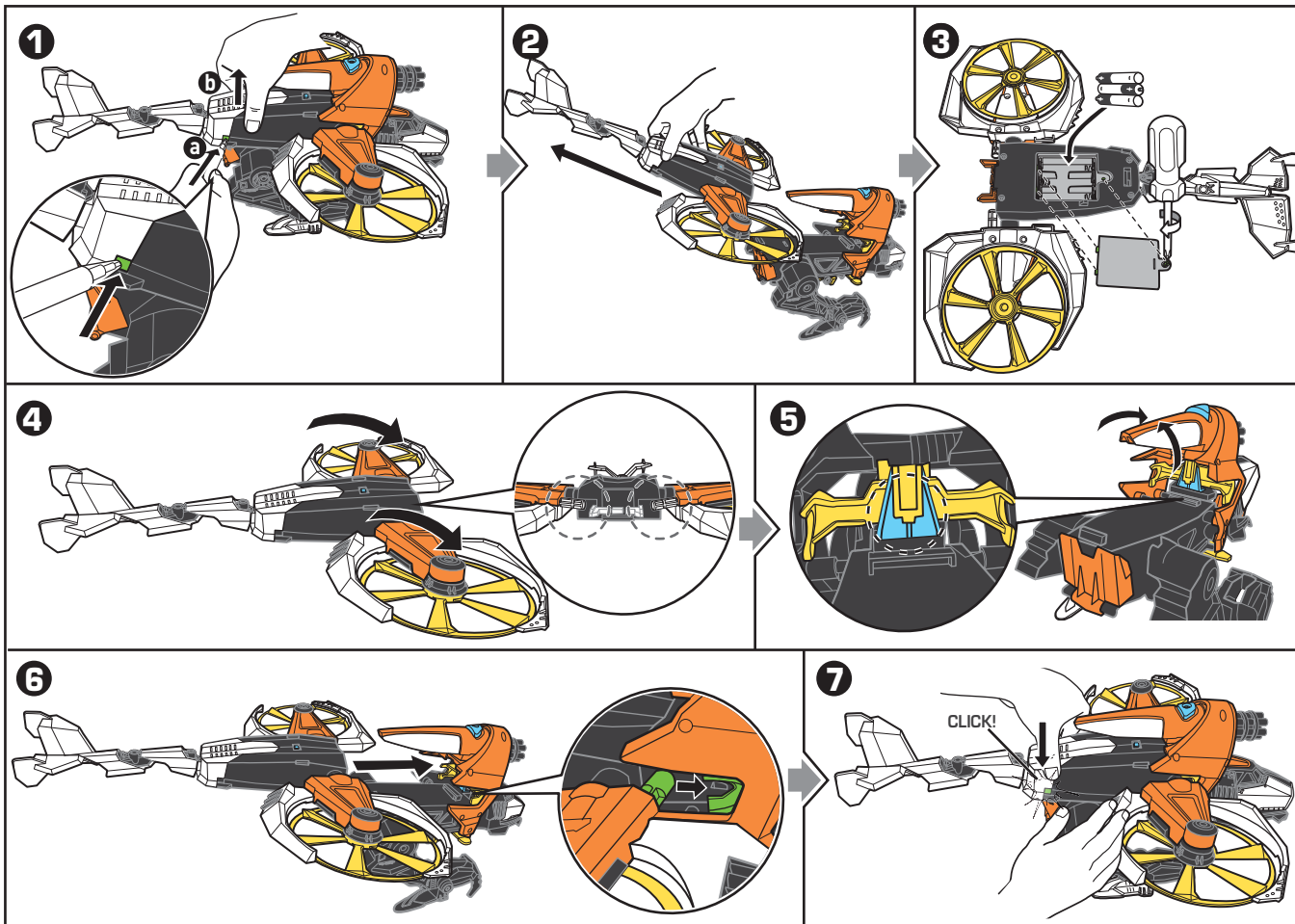
### BATTERY SAFETY INFORMATION

In exceptional circumstances batteries may leak fluids that can cause a chemical burn injury or ruin your product. To avoid battery leakage:

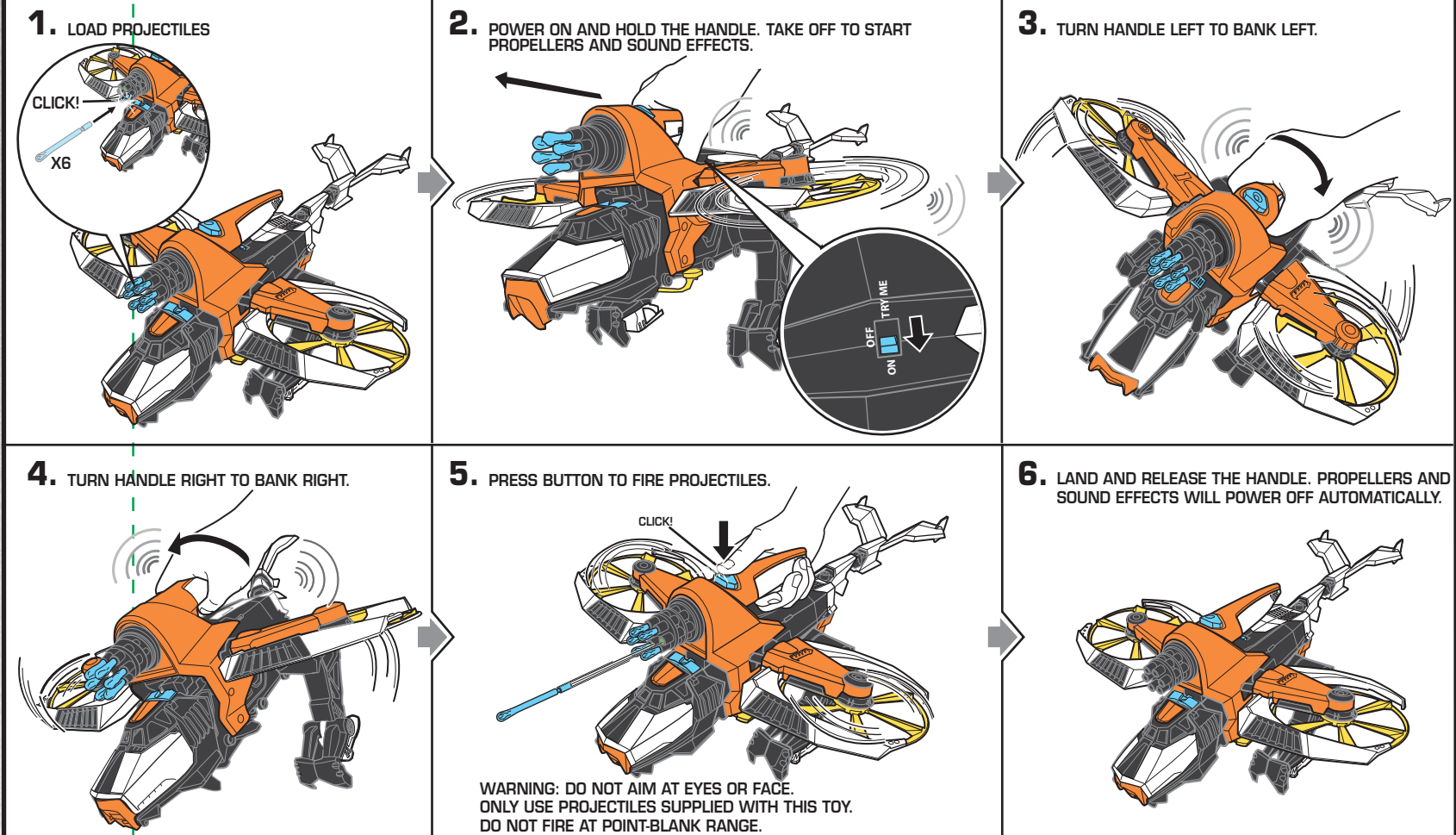
- Non-rechargeable batteries are not to be recharged.
- Rechargeable batteries are to be removed from the product before being charged.
- Rechargeable batteries are only to be charged under adult supervision.
- Do not mix alkaline, standard (carbon-zinc), or rechargeable (nickel-cadmium) batteries.
- Do not mix old and new batteries.
- Only batteries of the same or equivalent type as recommended are to be used.
- Batteries are to be inserted with the correct polarity.
- Exhausted batteries are to be removed from the product.
- The supply terminals are not to be short-circuited.
- Dispose of battery(ies) safely.
- Do not dispose of this product in a fire. The batteries inside may explode or leak.

**Battery Performance Note:**  
For best performance use alkaline batteries. Battery life may vary depending on battery brand.

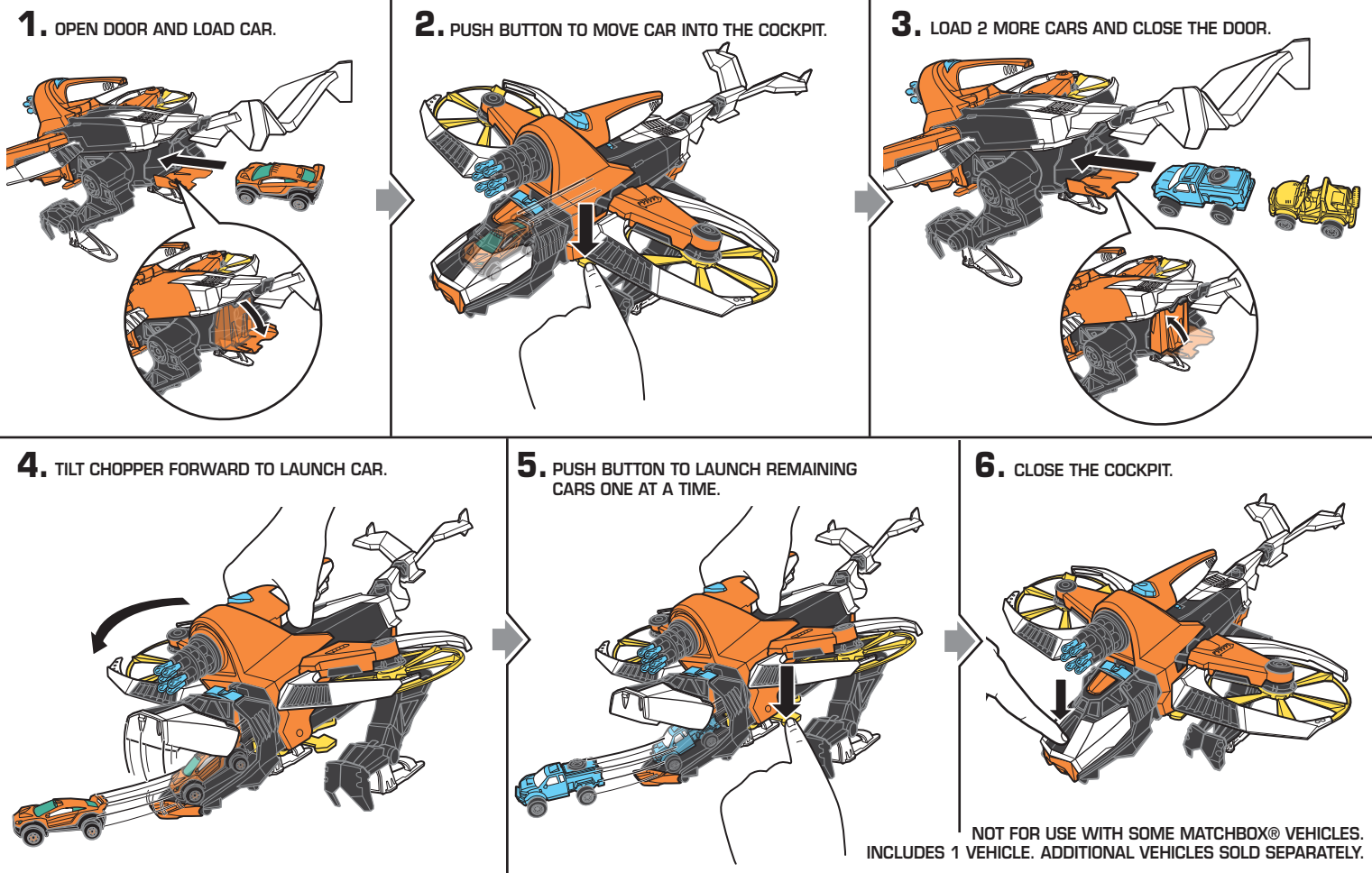
Protect the environment by not disposing of this product with household waste (2002/96/EC). Check your local authority for recycling advice and facilities.



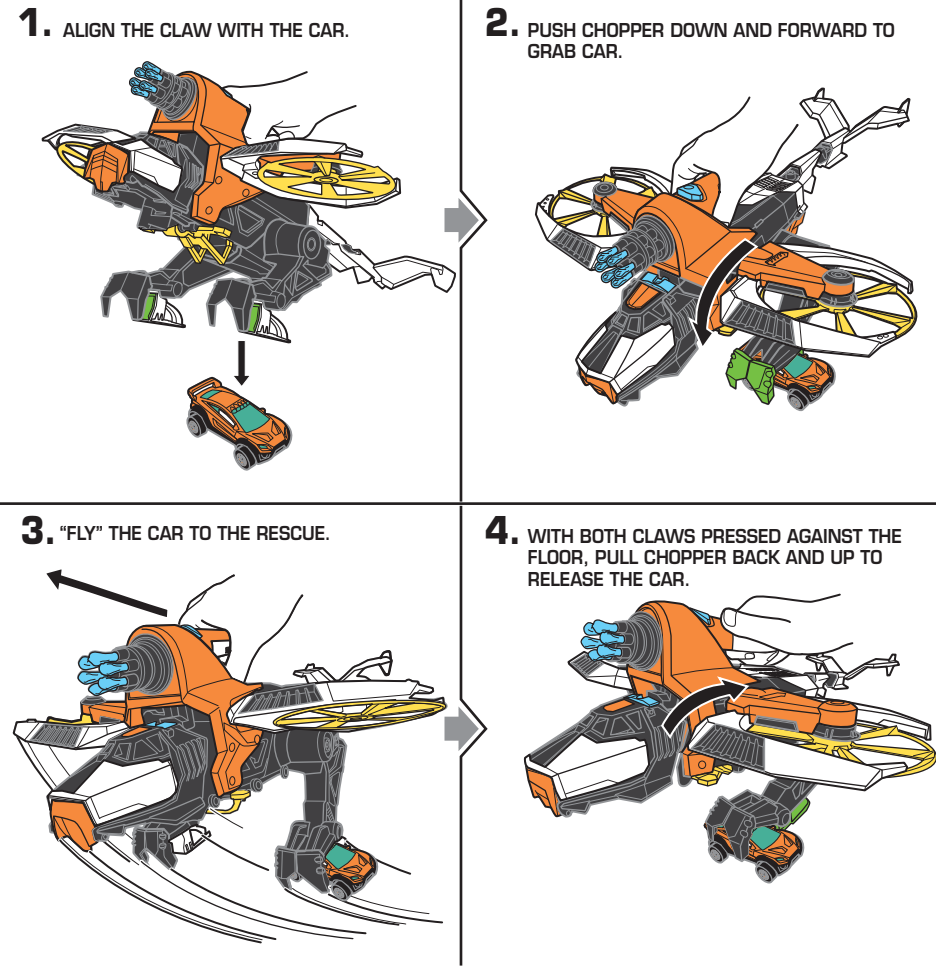
## 2 CHOPPER OPERATIONS



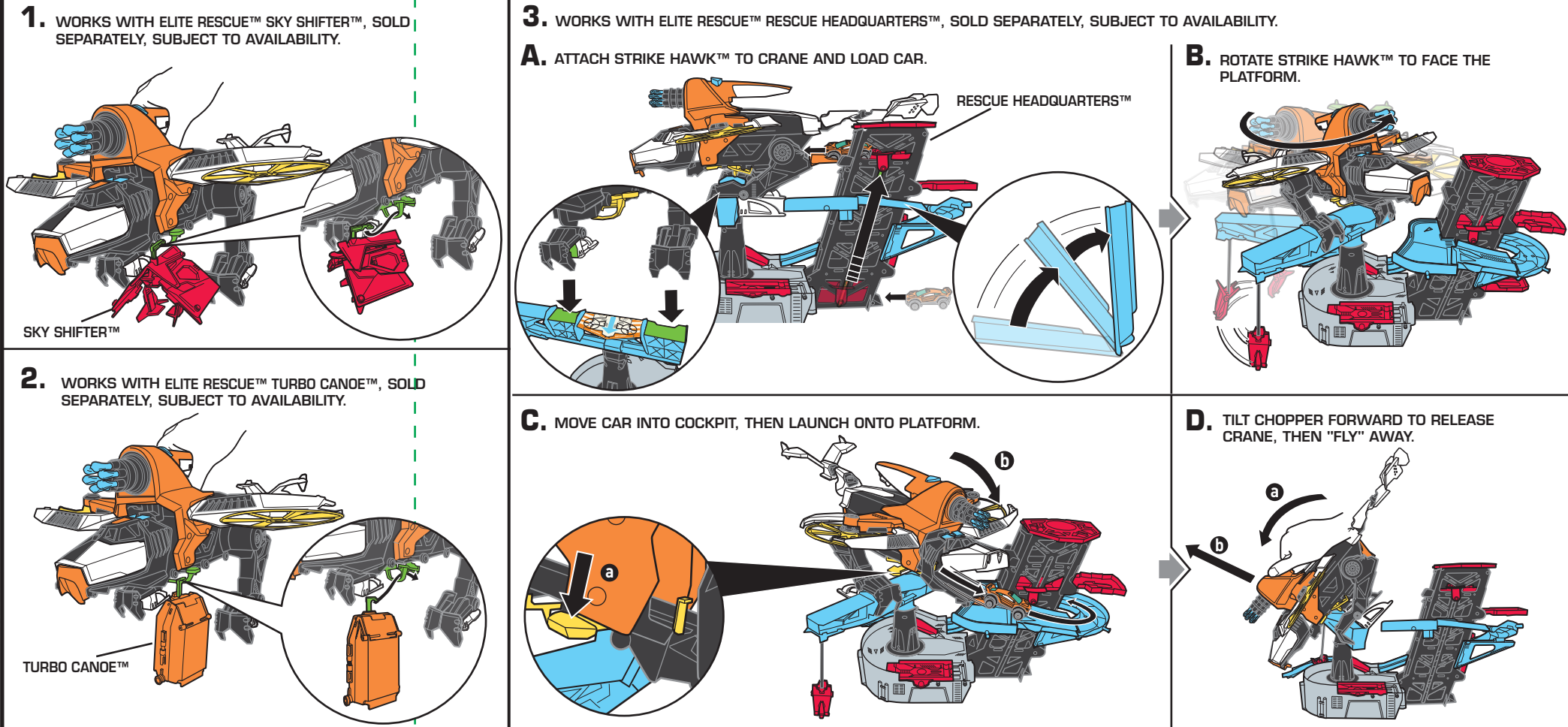
## 3 LOADING AND LAUNCHING VEHICLES



## 4 GRAB & DEPLOY VEHICLES



## 5 MORE WAYS TO PLAY





**MATCHBOX**

ON A MISSION™

**ELITE  
RESCUE**™

**STRIKE HAWK**™  
ELITE RESCUE CHOPPER

