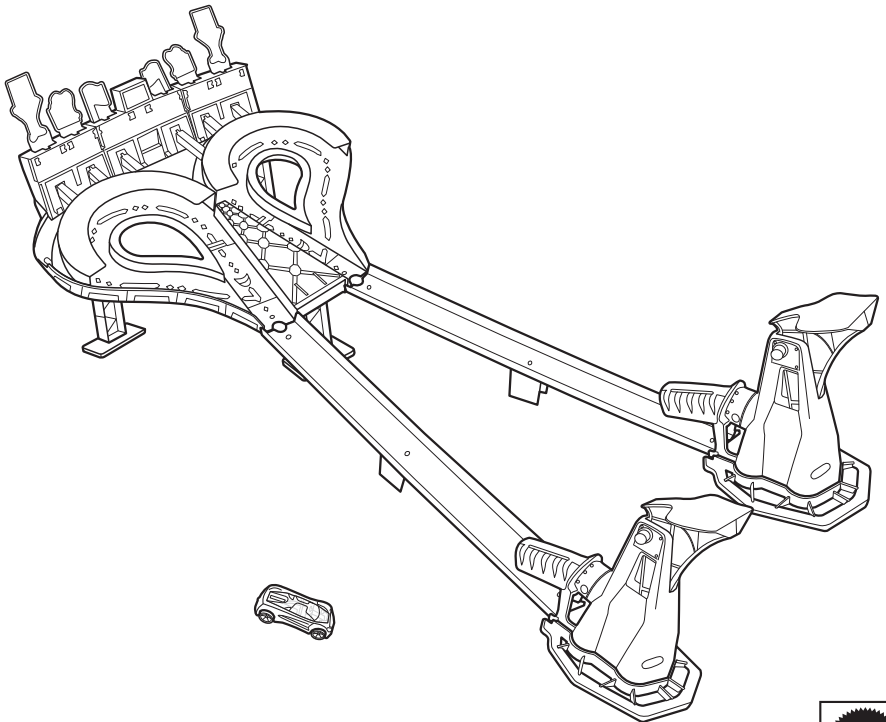




RACE

## SUPER SPEED BLASTWAY™



4+

service.mattel.com  
**HOTWHEELS.COM**

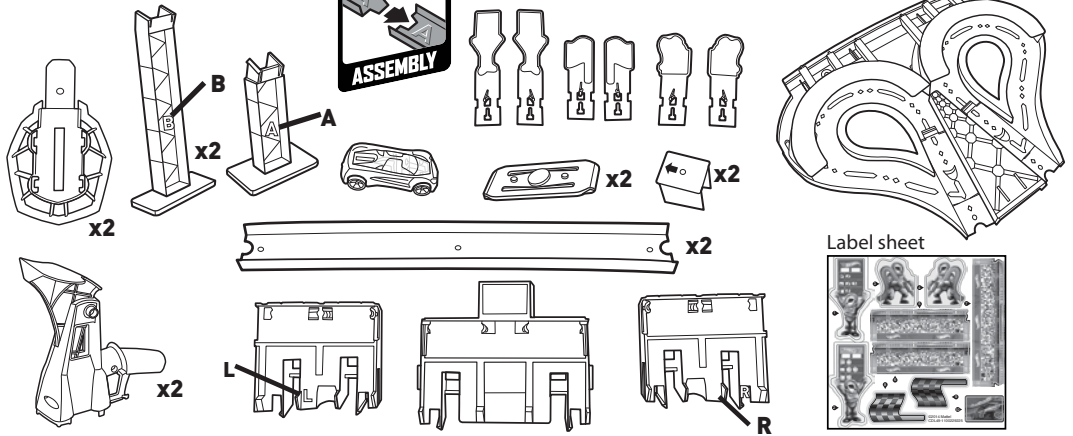


CDL49-1100309866\_DOMG3

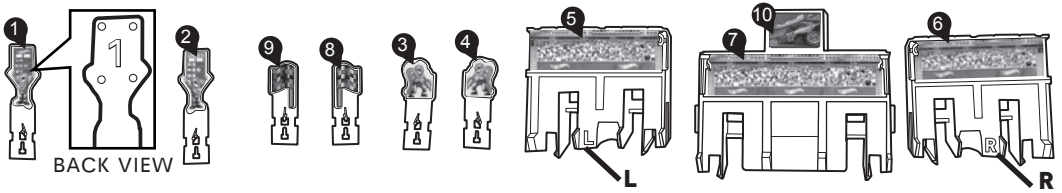
PLEASE KEEP THESE INSTRUCTIONS FOR FUTURE REFERENCE AS THEY CONTAIN IMPORTANT INFORMATION.

# CONTENTS

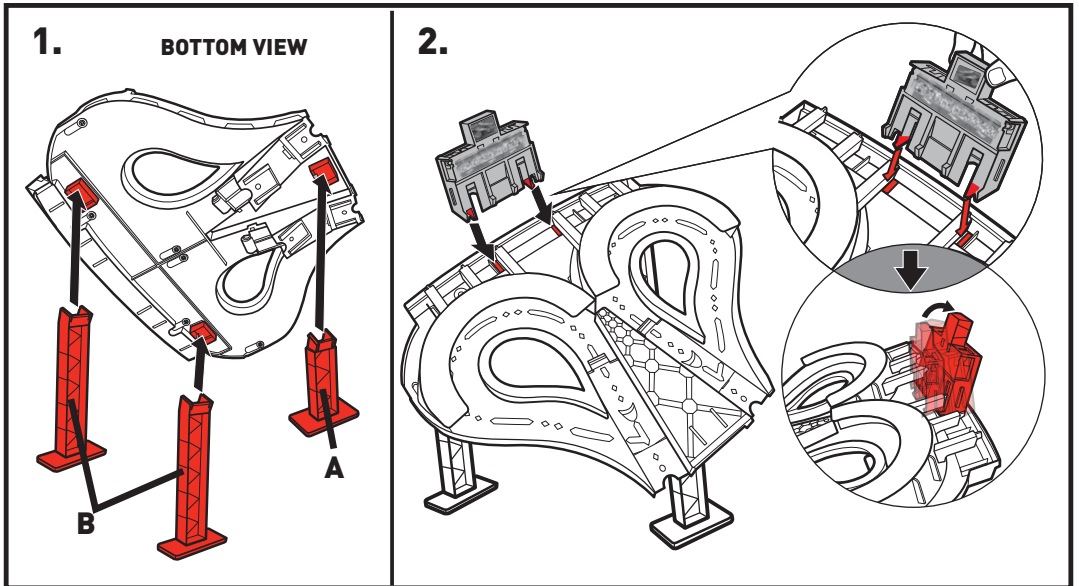
Refer to letter on toy parts and this page to help with assembly.



## APPLY LABELS

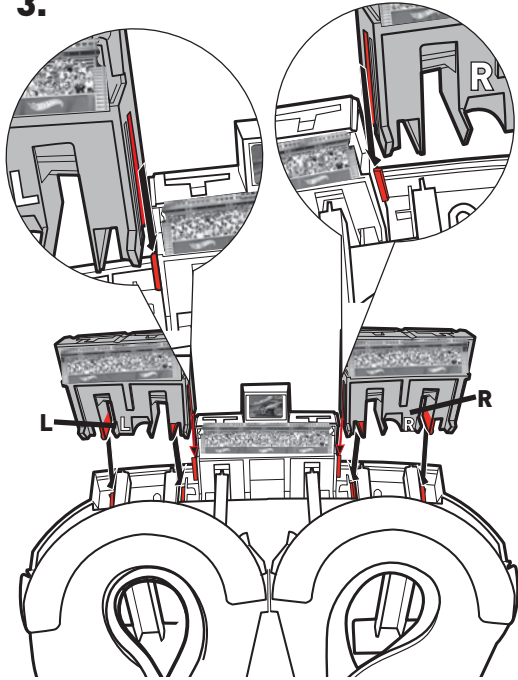


## ASSEMBLY

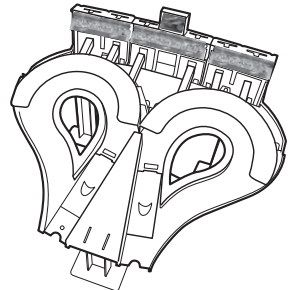
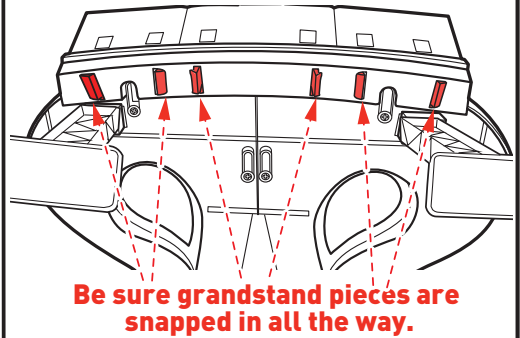


# ASSEMBLY (CONTD.)

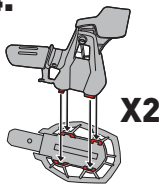
3.



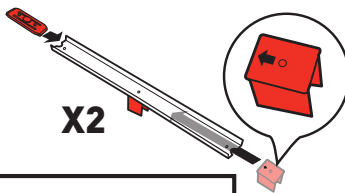
## BOTTOM VIEW



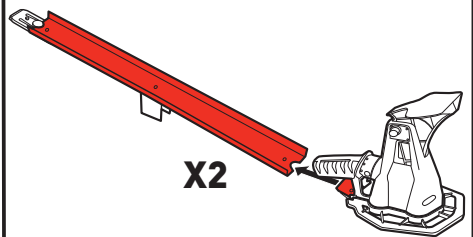
4.



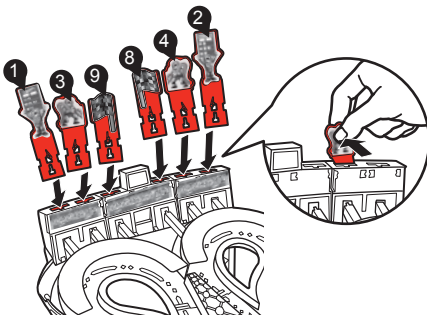
5.



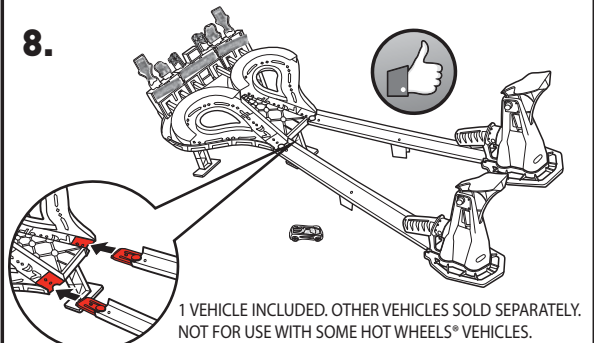
6.



7. Insert targets and push backward to lock in place.

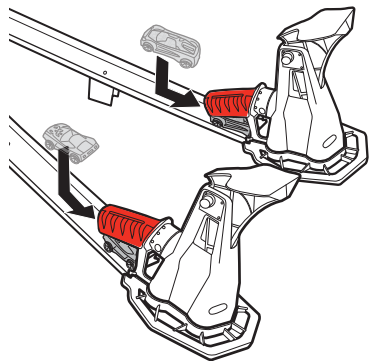


8.

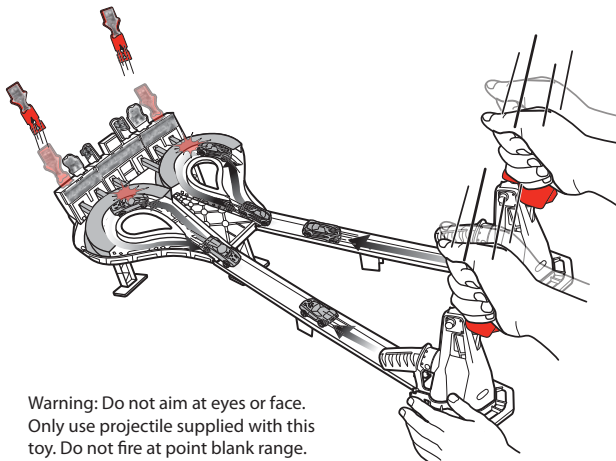


# TO PLAY

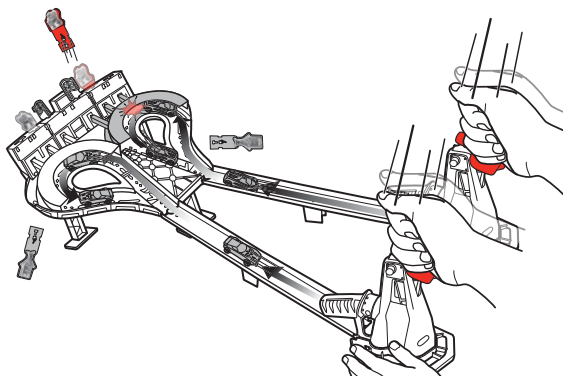
- 1.** Load cars  
(additional vehicle not included).



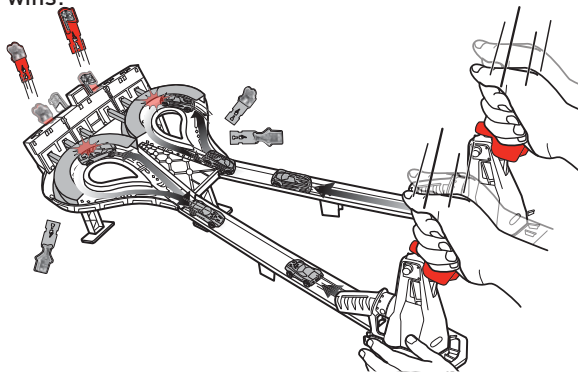
- 2.** Pound hard to launch cars! Send the targets flying!



- 3.** Pound hard enough to release the targets.

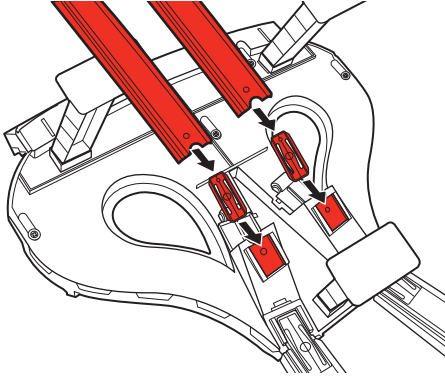


- 4.** First player to blast the checkered flag wins!

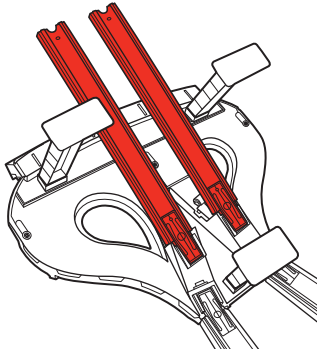


# MORE WAYS TO PLAY

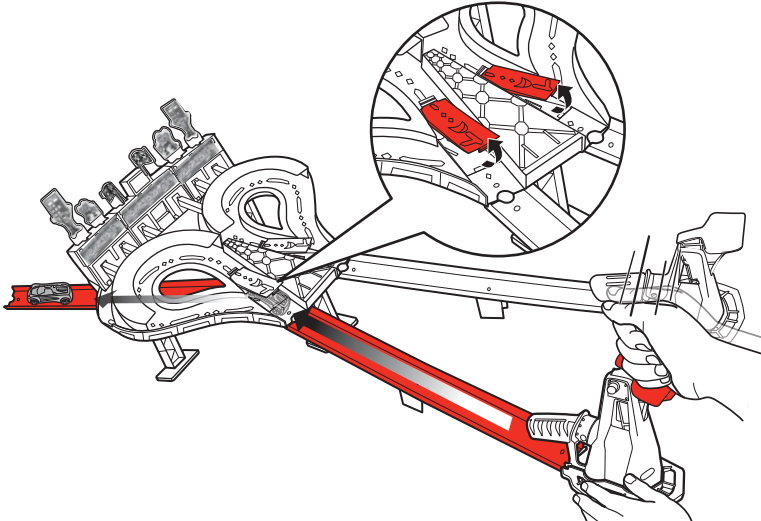
1. Connect to other HOT WHEELS® sets (sold separately).  
Flip the set over, and connect to track and track connectors (not included).



2.



3.



# PERFORMANCE TIPS

**Q.** My car often flies off the track. What's wrong?

**A.** You may be pounding too hard on the launcher. Try using less power.

**Q.** My car is slow and cannot make it around the bend. What can I do?

**A.** Try the following:

- Pound harder on the launcher.
- Make sure the car is pushed all the way inside the launcher before pounding.
- Hold down and stabilize the launcher with one hand, then pound with your other hand.
- Check for lint around the car's axles. Remove lint if found.

**Q.** The targets won't launch into the air. How can I fix that?

**A.** Try the following:

- Make sure grandstand pieces are snapped all the way into the set as shown in assembly step 3.
- Pound harder on the launcher to make the car go faster. You need a fast car to set off the targets.

**Q.** How can I stop my car from crashing into the roof in the bend around the track?

**A.** Use low profile cars. They work best with this set. Do not use cars with a spoiler or high profile.