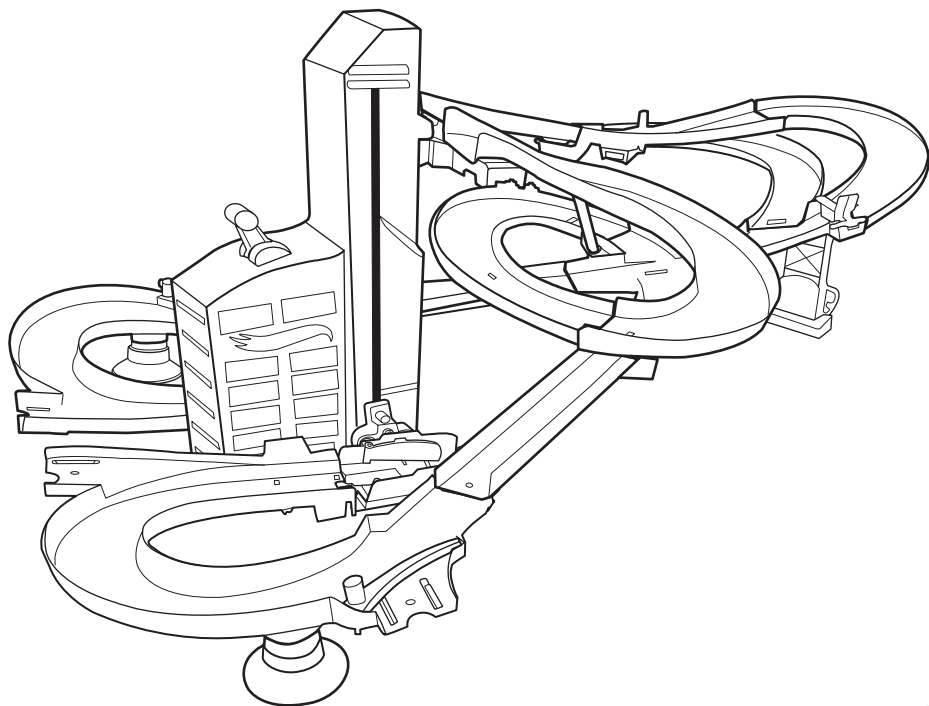


# INSTRUCTIONS



## AUTO LIFT EXPRESSWAY



**5+**

REQUIRES 2 - D SIZE (LR20) ALKALINE BATTERIES (NOT INCLUDED).  
DISPOSE OF BATTERIES SAFELY.



CDR08-1100182174\_DOMG3  
CFC92-1100382367\_DOMG1

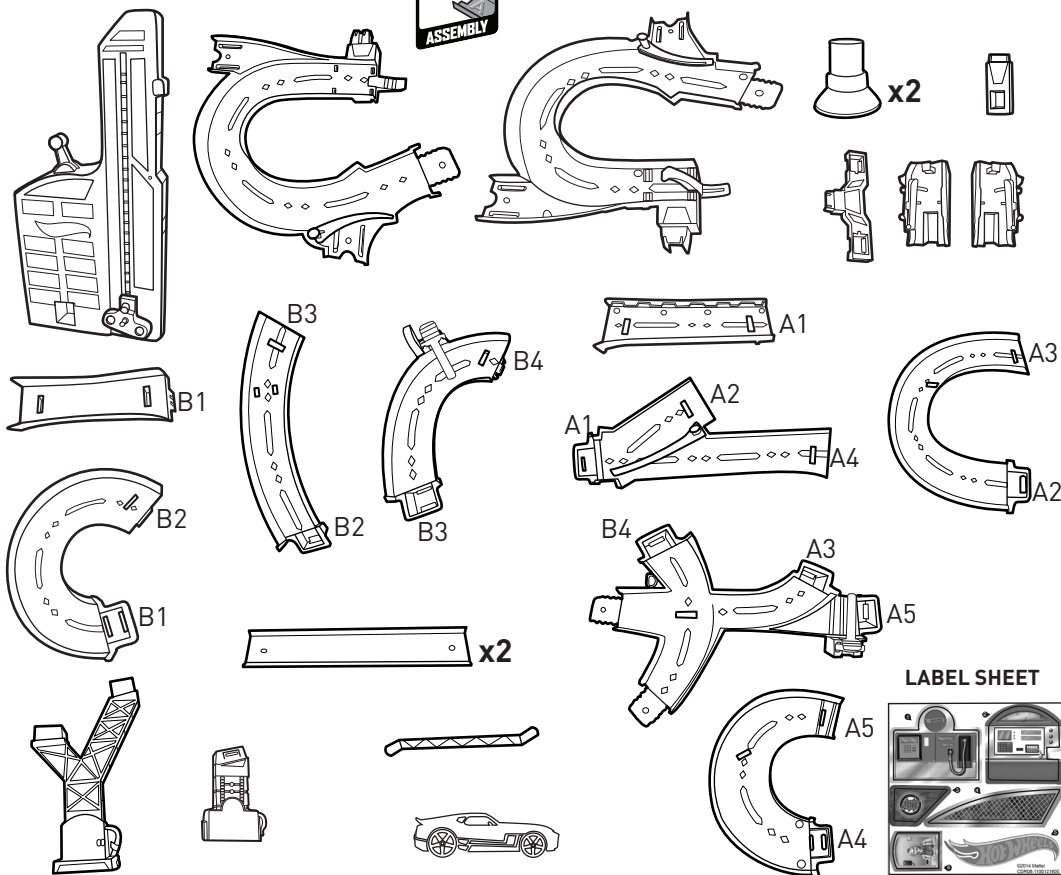
PLEASE KEEP THESE INSTRUCTIONS FOR FUTURE  
REFERENCE AS THEY CONTAIN IMPORTANT INFORMATION.

service.mattel.com  
**HOTWHEELS.COM**

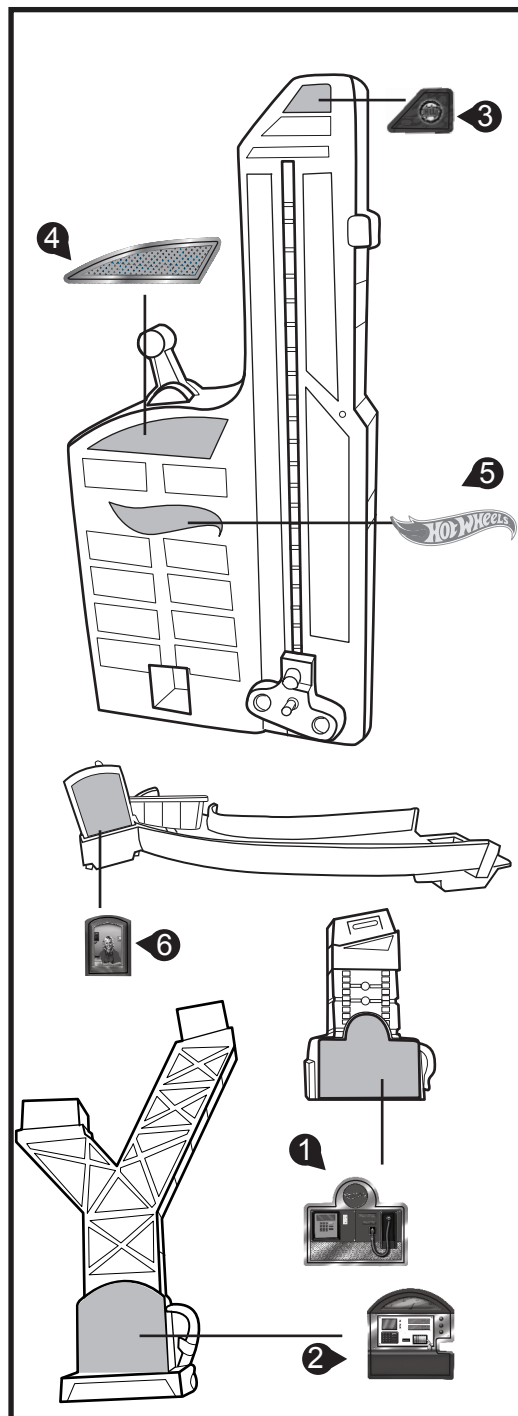
# CONTENTS



Refer to letter on toy parts and contents page to help with assembly.

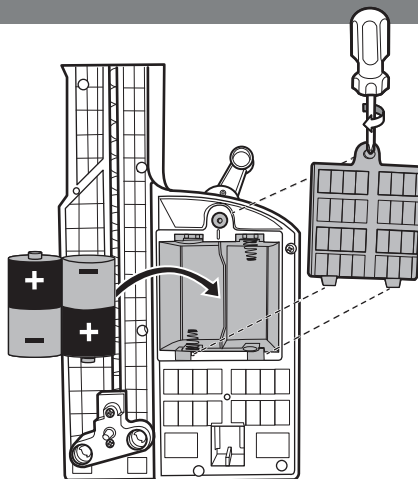


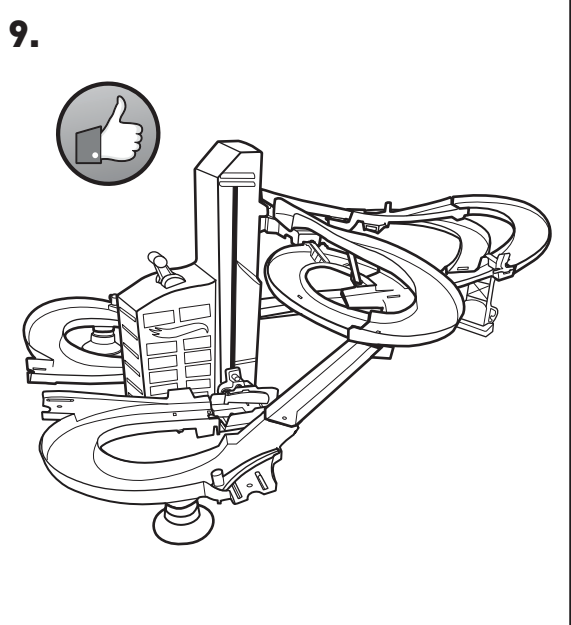
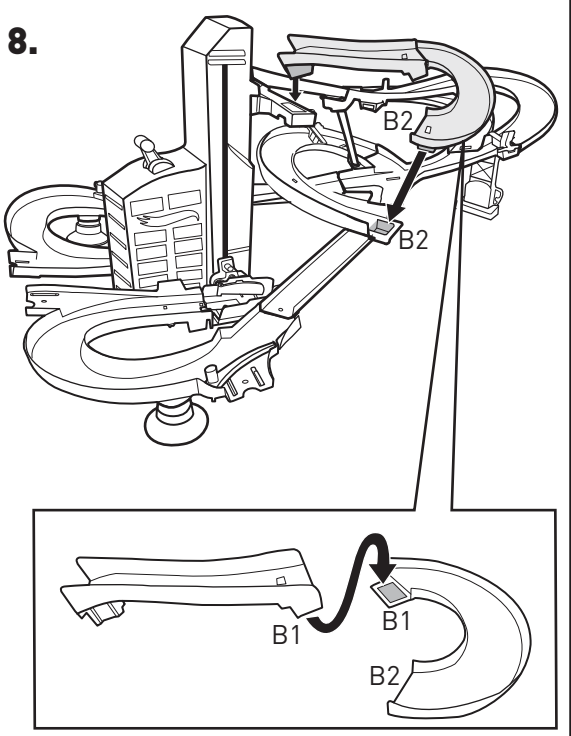
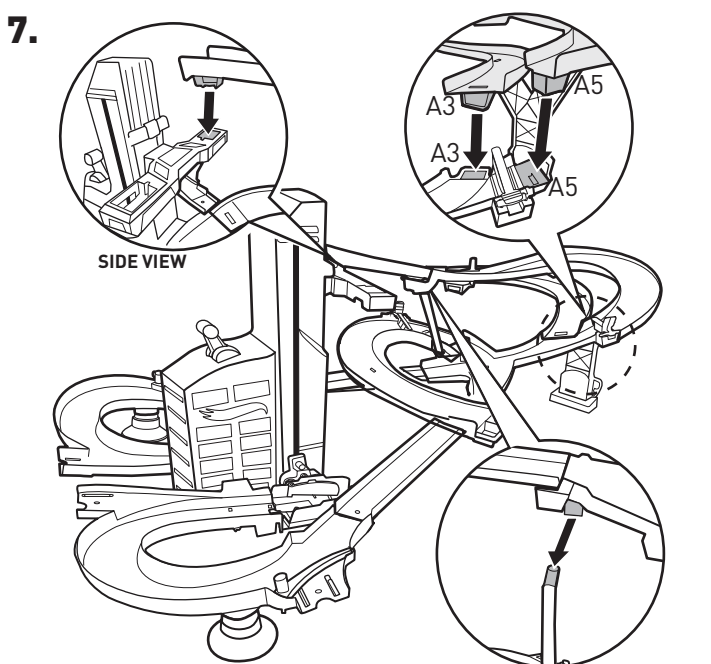
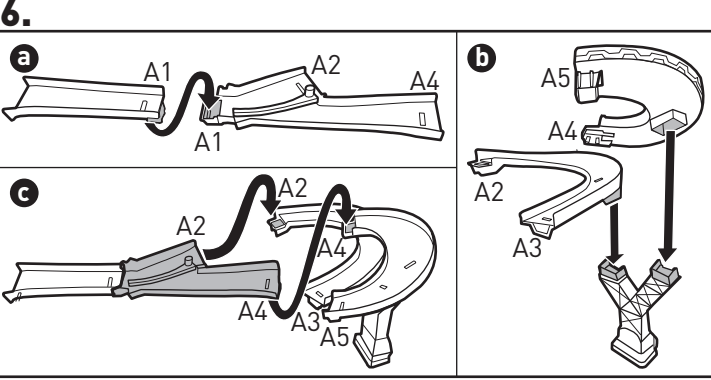
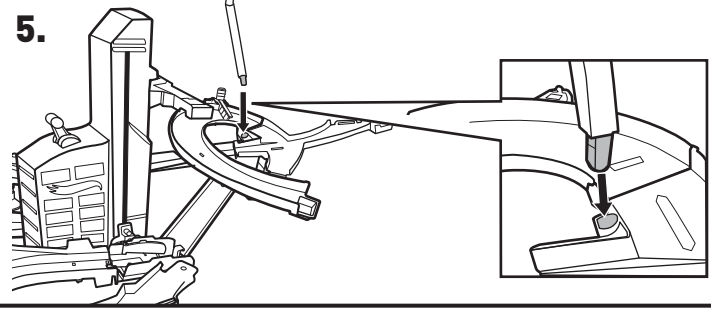
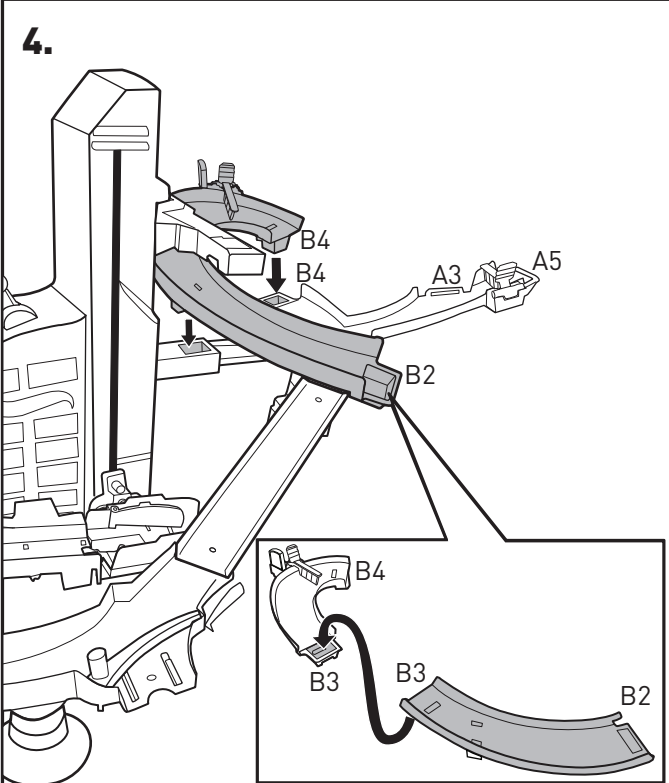
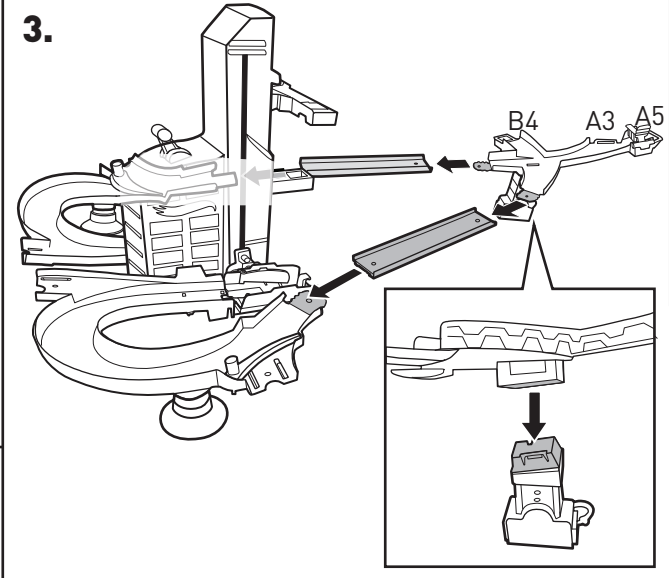
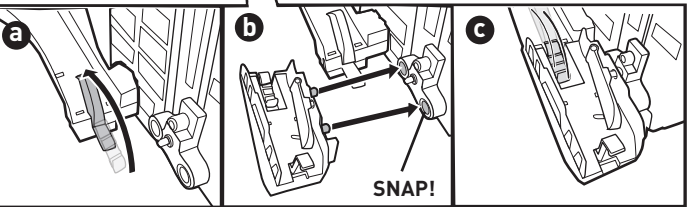
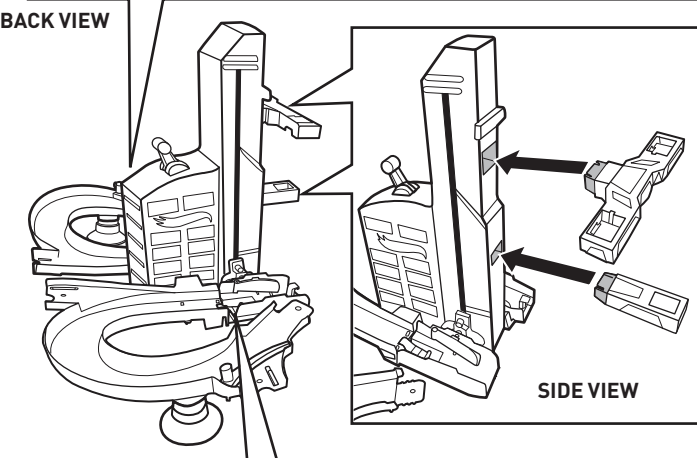
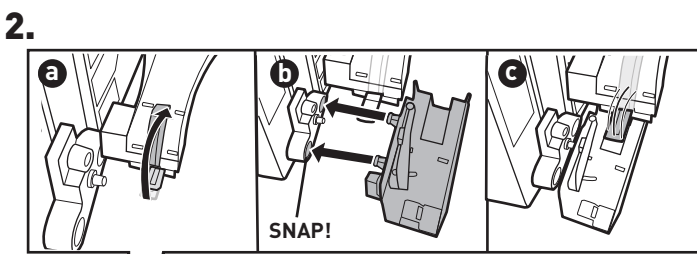
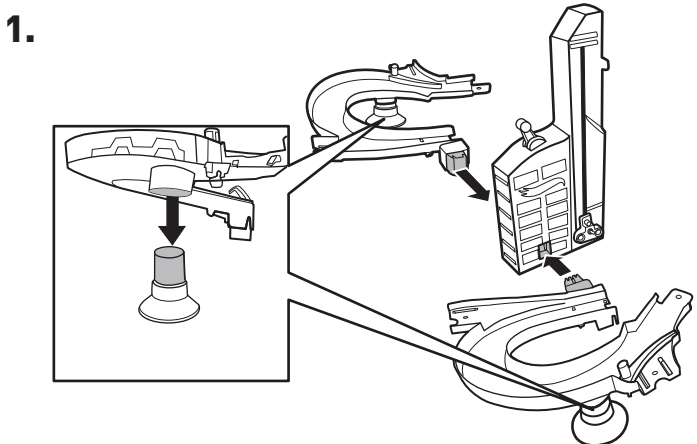
# APPLY LABELS



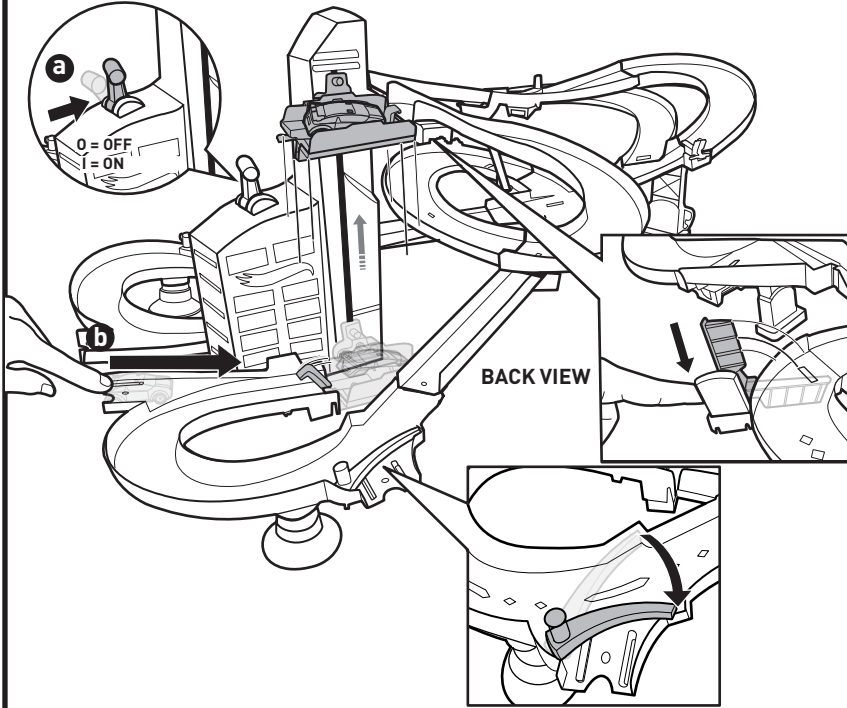
# BATTERY INSTALLATION

- Unscrew the battery cover with a Phillips head screwdriver (not included).
- Install 2 new "D" size (LR20) alkaline batteries (not included) in the orientation (+/-) shown.
- Replace battery cover and tighten screw.
- For longer life use alkaline batteries.
- Replace batteries when the elevator can no longer transport cars to the top of the set.

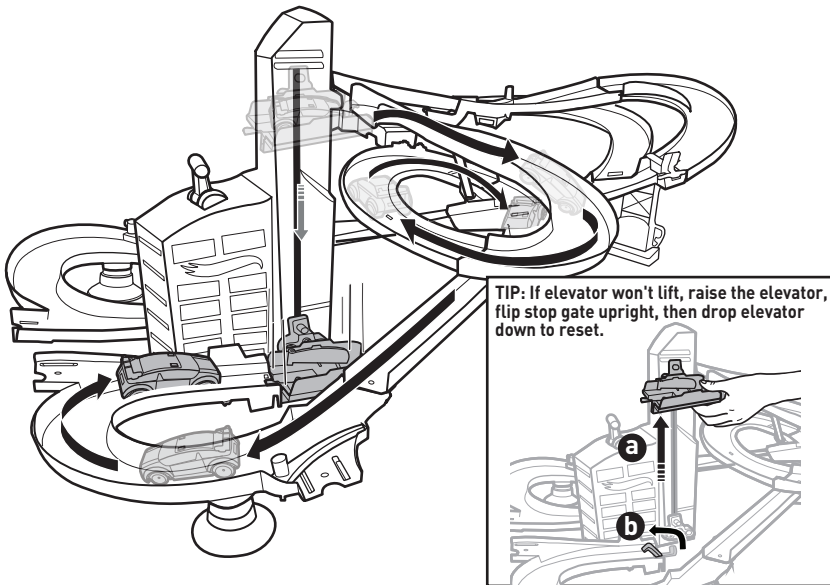




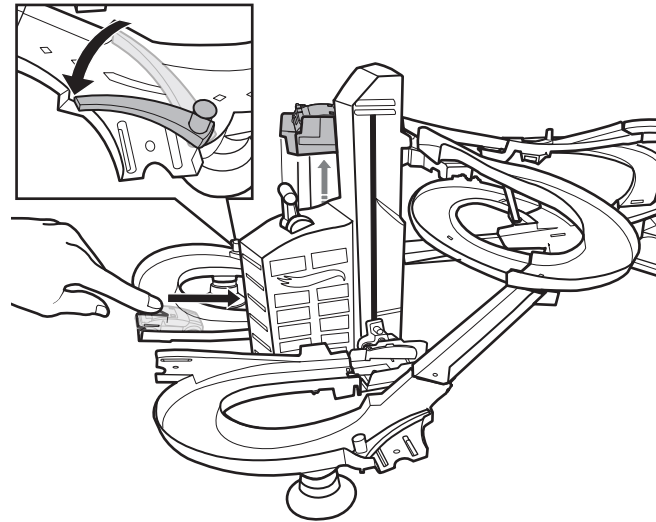
## 1. SWITCH ON AND LOAD CAR ONTO THE OUTSIDE ELEVATOR.



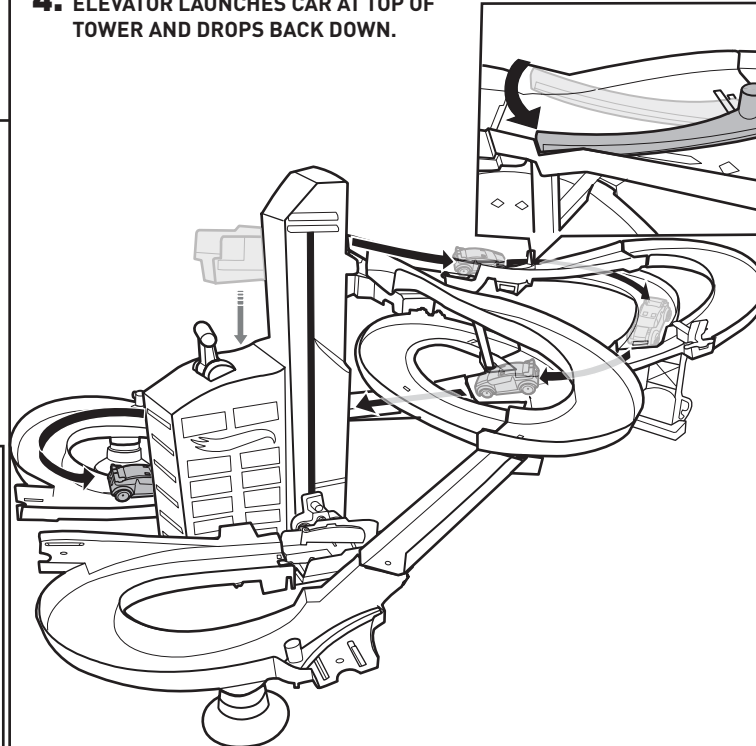
## 2. ELEVATOR LAUNCHES CAR AT TOP OF TOWER AND DROPS BACK DOWN.



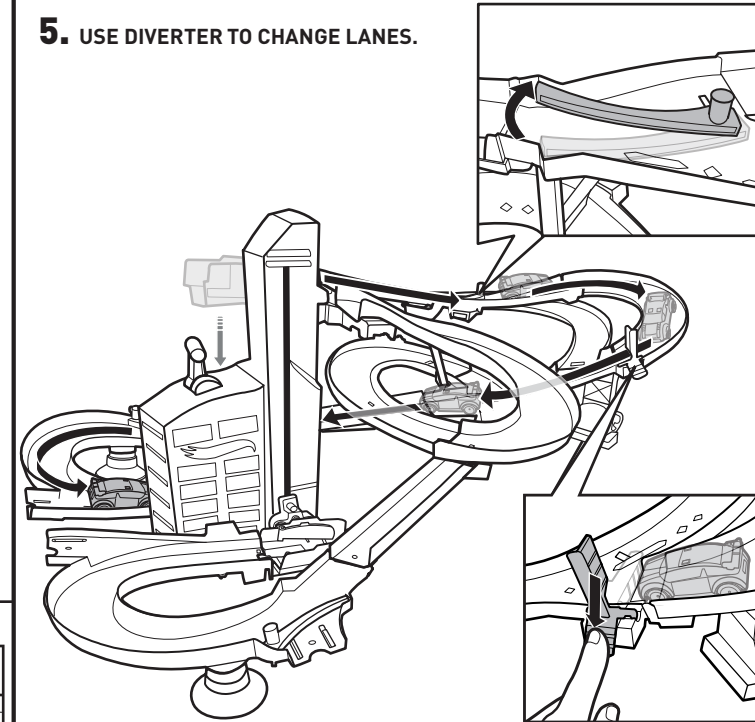
## 3. LOAD CAR ONTO THE INSIDE ELEVATOR.



## 4. ELEVATOR LAUNCHES CAR AT TOP OF TOWER AND DROPS BACK DOWN.

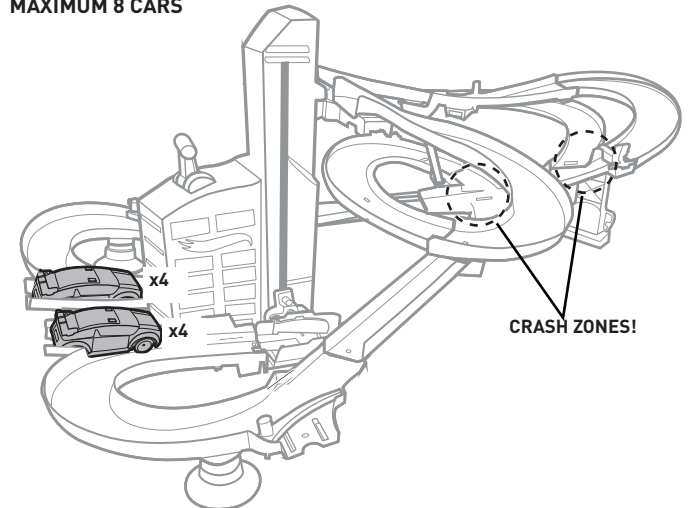


## 5. USE DIVERTER TO CHANGE LANES.



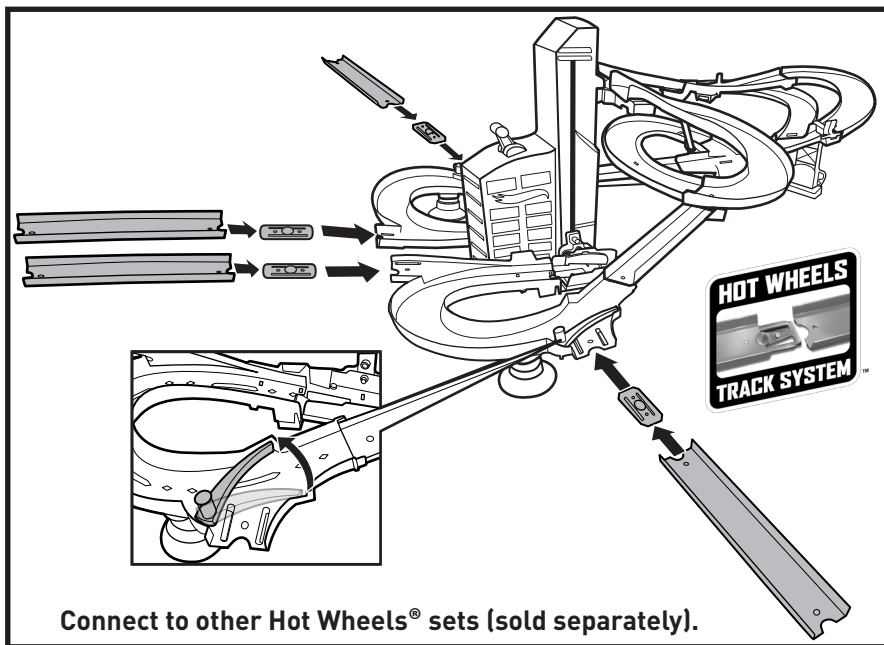
### CRASH ZONES

LOAD CARS ONTO BOTH ELEVATORS FOR CRASHING ACTION!  
MAXIMUM 8 CARS



INCLUDES 1 VEHICLE. ADDITIONAL VEHICLES SOLD SEPARATELY.  
NOT FOR USE WITH SOME HOT WHEELS® VEHICLES.

# MORE WAYS TO PLAY



## BATTERY SAFETY INFORMATION

In exceptional circumstances batteries may leak fluids that can cause a chemical burn injury or ruin your product. To avoid battery leakage:

- Non-rechargeable batteries are not to be recharged.
- Rechargeable batteries are to be removed from the product before being charged.
- Rechargeable batteries are only to be charged under adult supervision.
- Do not mix alkaline, standard (carbon-zinc), or rechargeable (nickel-cadmium) batteries.
- Do not mix old and new batteries.
- Only batteries of the same or equivalent type as recommended are to be used.
- Batteries are to be inserted with the correct polarity.
- Exhausted batteries are to be removed from the product.
- The supply terminals are not to be short-circuited.
- Dispose of battery(ies) safely.
- Do not dispose of this product in a fire. The batteries inside may explode or leak.

### Battery Performance Note:

For best performance use alkaline batteries. Battery life may vary depending on battery brand.



Protect the environment by not disposing of this product with household waste (2002/96/EC). Check your local authority for recycling advice and facilities.