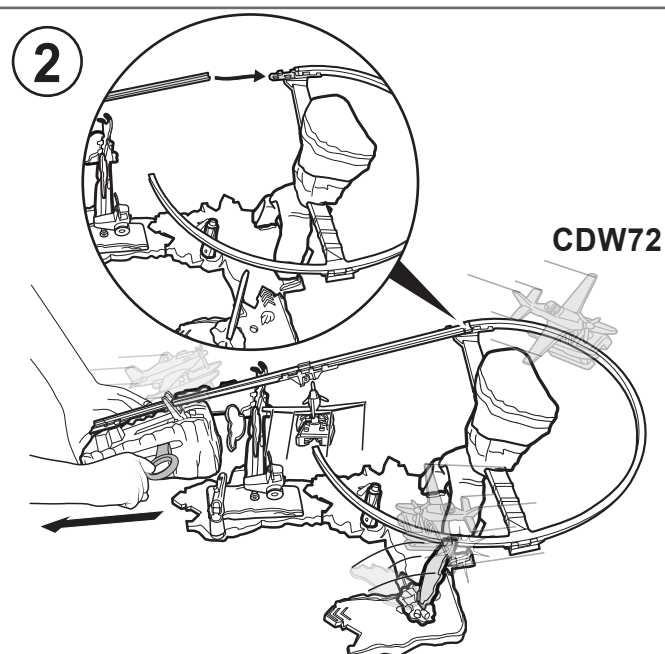
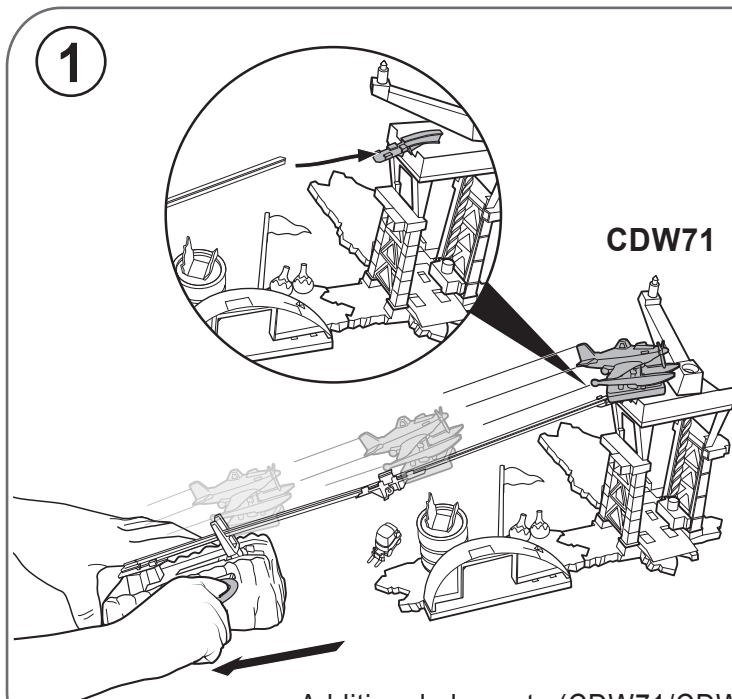


- 1** Pull ring all the way back to launch plane to fight the "fire".  
**NOTE:** Release the ring early and the plane will launch with less power.

- 2** Load and launch plane again to put out the "fire" and rescue Dusty's friend.

- 3** Reposition the launcher and "fly" to the top of the tower.

Other vehicles shown sold separately.  
 Not for use with some PLANES vehicles.



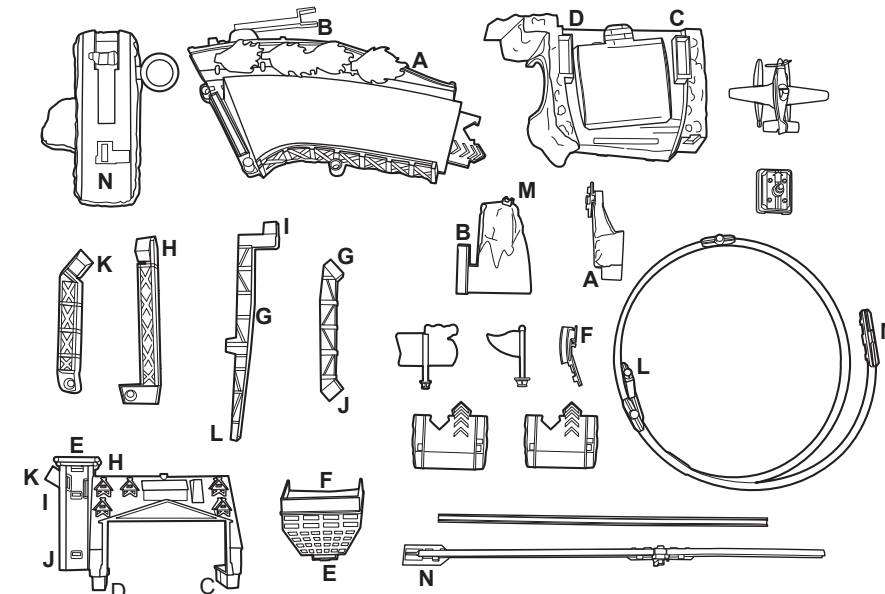
Additional play sets (CDW71/CDW72) not included, sold separately, subject to availability.

## CONTENTS

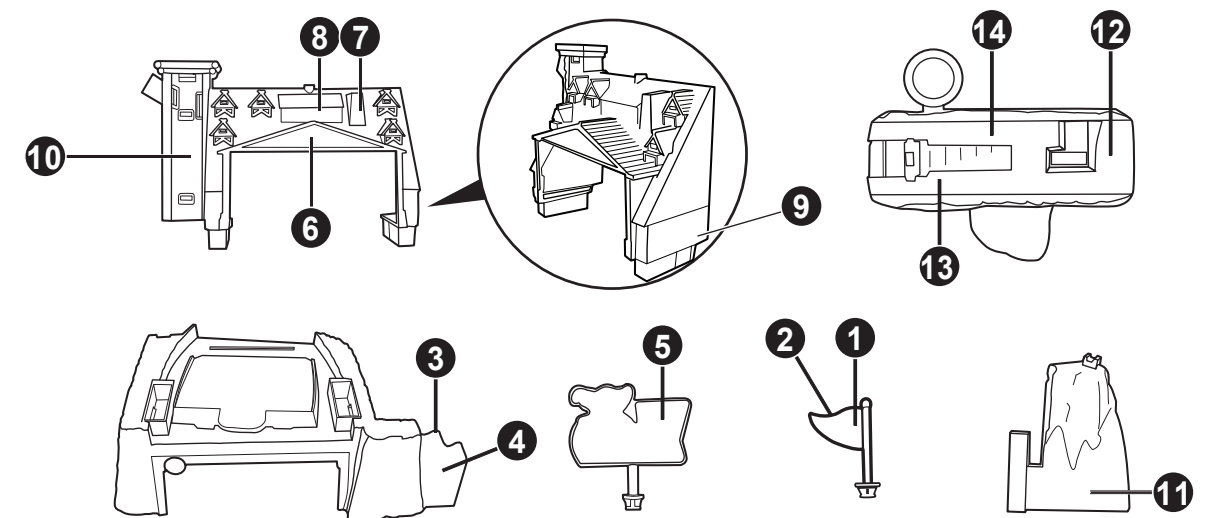
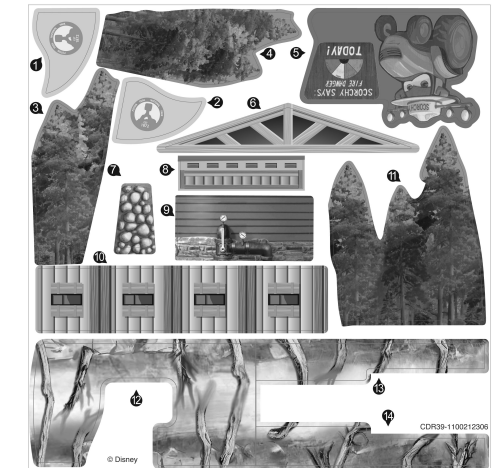
**WARNING:**  
 CHOKING HAZARD - Small parts.  
 Not for children under 3 years.



REFER TO LETTERS MOLDED ON TOY PARTS AND  
 THROUGHOUT THE INSTRUCTIONS TO HELP WITH ASSEMBLY.



Label Sheet

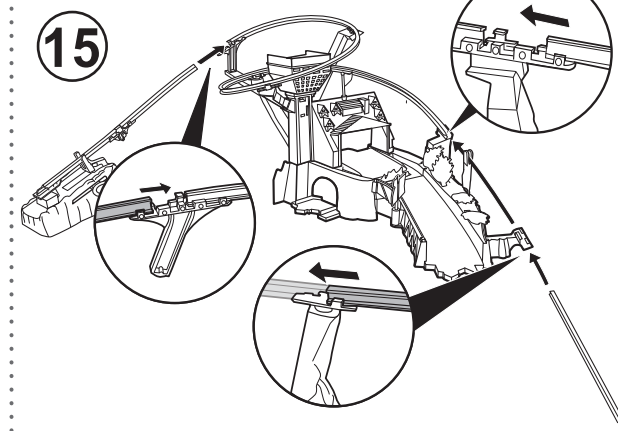
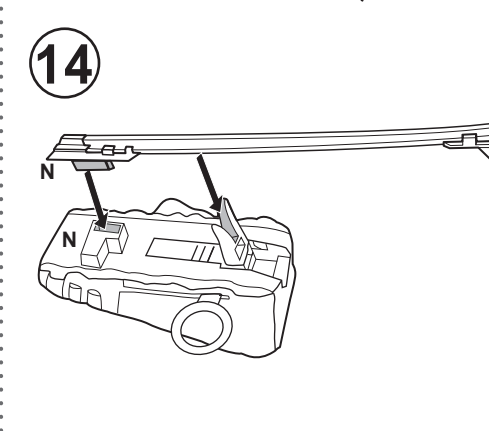
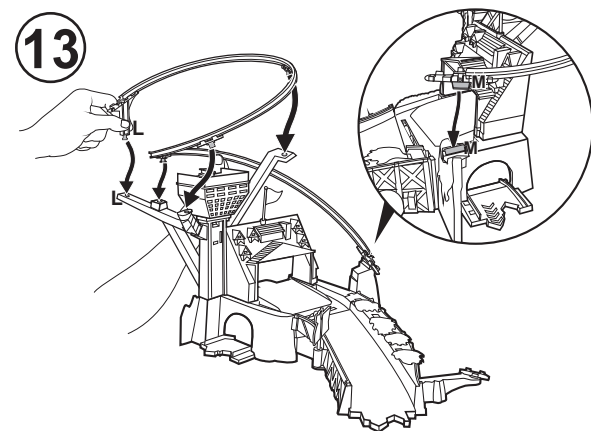
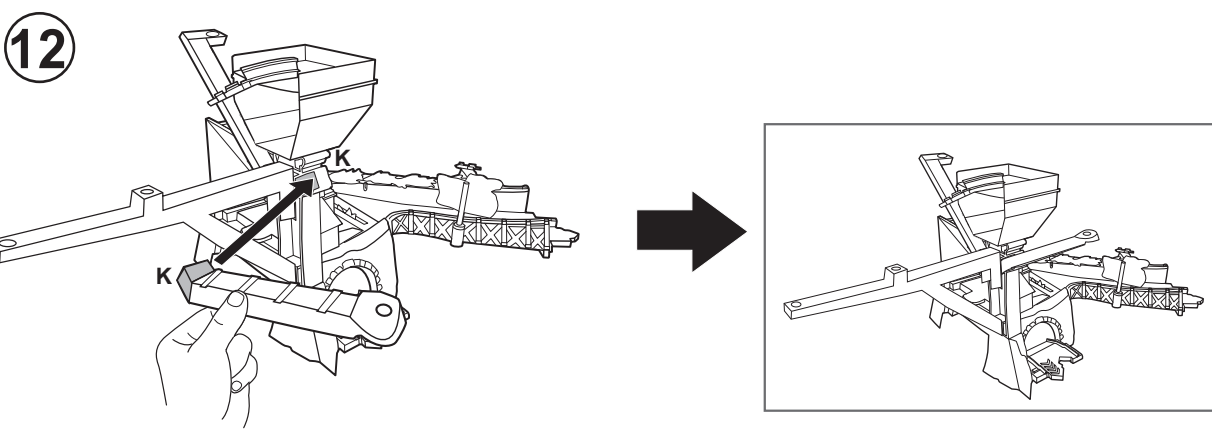
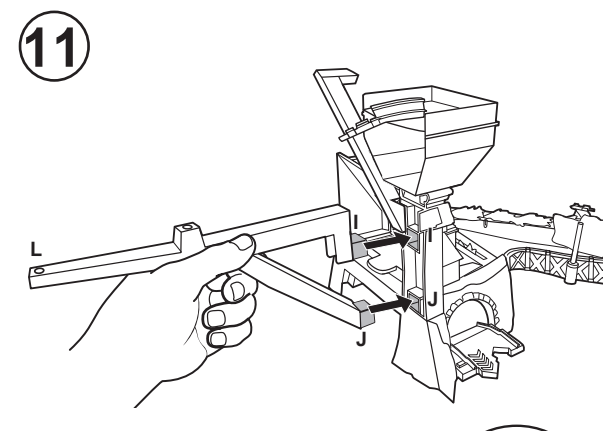
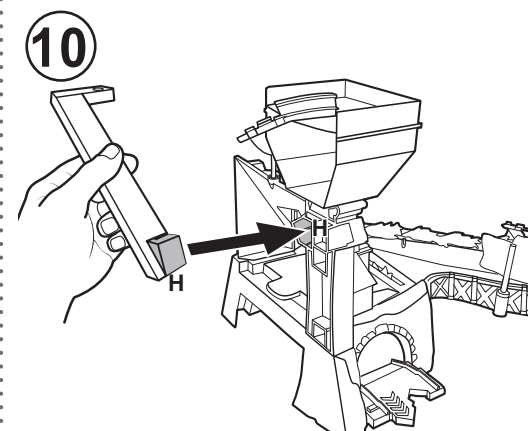
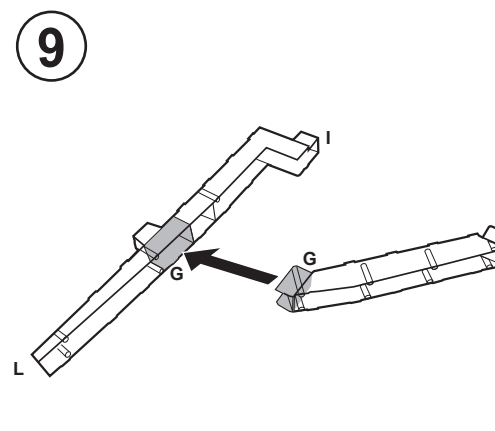
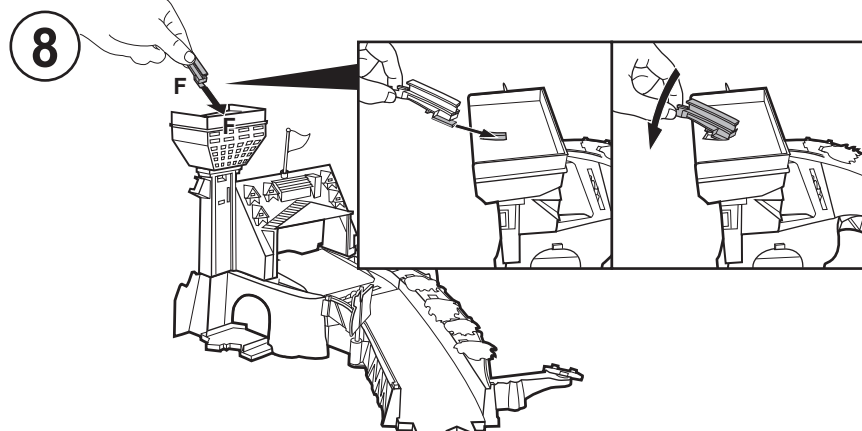
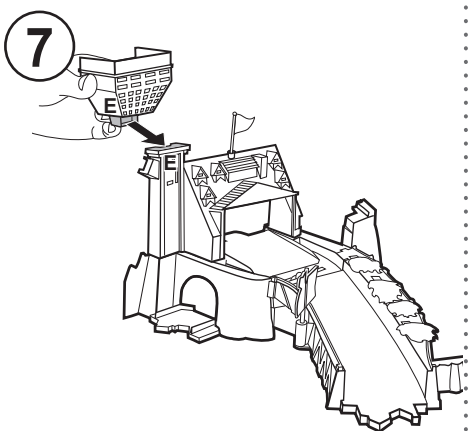
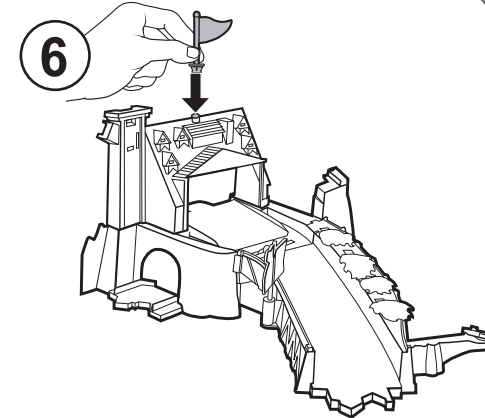
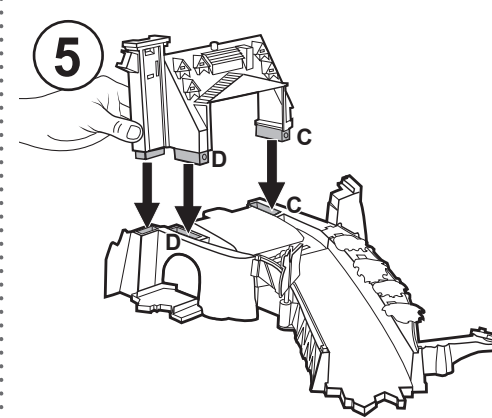
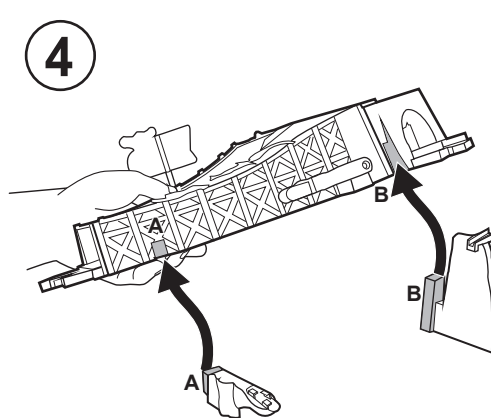
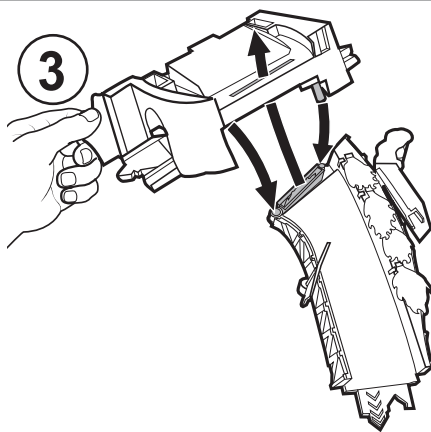
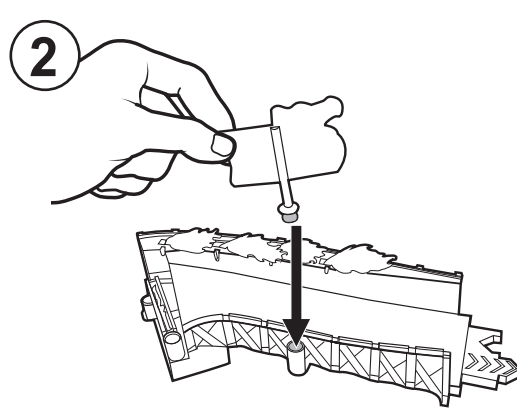
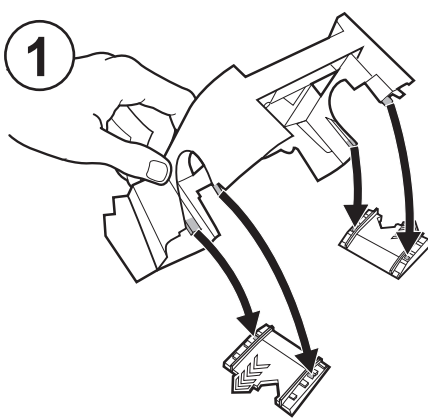


©2014 Mattel. All Rights Reserved. ® and ™ designate U.S. trademarks of Mattel, except as noted.

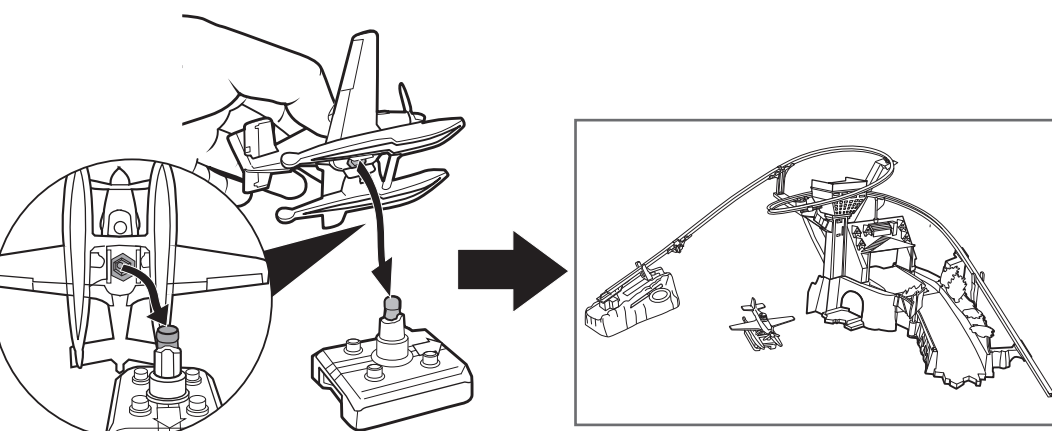
Mattel, Inc., 636 Girard Avenue, East Aurora, NY 14052, U.S.A. Consumer Relations 1-800-524-8697. Mattel U.K. Ltd., Vanwall Business Park, Maidenhead SL6 4UB. Helpline 01628 500303. Mattel Australia Pty., Ltd., Richmond, Victoria. 3121. Consumer Advisory Service - 1300 135 312.

Mattel East Asia Ltd., Room 503-09, North Tower, World Finance Centre, Harbour City, Tsimshatsui, HK, China. Diimport & Diedarkan Oleh: Mattel SEA Ptd Ltd. (993532-P) Lot 13.5, 13th Floor, Menara Lien Hoe, Persiaran Tropicana Golf Country Resort, 47410 PJ. Malaysia. Tel: 03-78803817, Fax: 03-78803867.

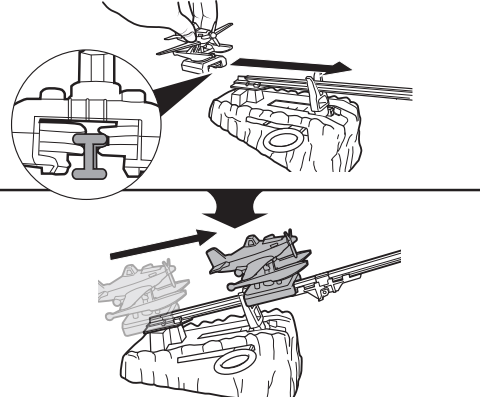




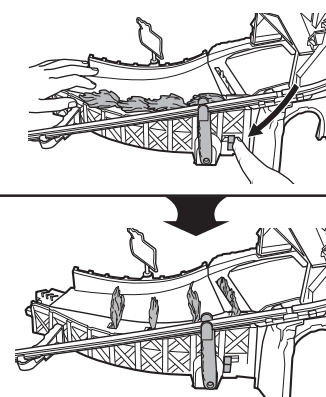
**16** Attach plane to rollers. (Detach and switch plane if desired).



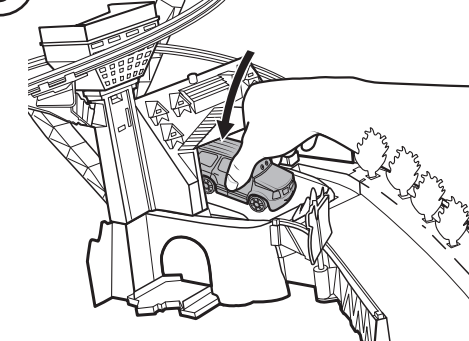
**1** Slide rollers past the launch arm to load plane onto track.



**2** Push button firmly to set up "fire" targets.



**3** Load Dusty's friend (not included).



Includes one plane. Other vehicles sold separately.