



THOMAS' SHIPWRECK RAILS SET

Thomas the Tank Engine & Friends™
 CREATED BY BRITAIN'S ALLCROFT
 Based on the Railway Series by The Reverend W Awdry.
 ©2015 Gullane (Thomas) Limited. Thomas the Tank Engine & Friends and Thomas & Friends are trademarks of Gullane (Thomas) Limited.
 ©2015 HIT Entertainment Limited. HIT and the HIT logo are trademarks of HIT Entertainment Limited.
 ©2015 Mattel. All Rights Reserved. ® and ™ designate U.S. trademarks of Mattel, except as noted. **PRINTED IN CHINA.**
 Mattel East Asia Ltd., Room 503-09, North Tower, World Finance Centre, Harbour City, Tsimshatsui, HK, China.
 Tel.: (852) 3185-6500.

CAUTION:
 To prevent entanglement, keep hair away from wheels.

CONSUMER ASSISTANCE
 1-800-432-5437 (US & Canada)
 1-800-335-3312 (Australia)
service.fisher-price.com
 Fisher-Price, Inc. 630 Grand Avenue, East Aurora, NY 14052.
 Hearing-impaired consumers: 1-800-362-7470.
 Outside the United States:
 Canada: Mattel Canada Inc., 6155 Freemont Blvd., Mississauga, Ontario L5R 3R2; www.service.mattel.com.
 Great Britain: Mattel UK Ltd, Vauxhall Business Park, Maidenhead SL6 4UB. Helpline: 01628 500303. www.service.mattel.com/uk
 Mattel Europa B.V., Gouda 1, 1186 MJ Amstelveen, Nederland.
 Australia: Mattel Australia Pty. Ltd., 658 Church Street, Locked Bag 9870, Richmond, Victoria 3121, Australia.
 New Zealand: 15-18 Williams Pickering Drive, Albany 1331, Auckland.

Protect the environment by not disposing of this product with household waste (2002/96/EC). Check your local authority for recycling advice and facilities.

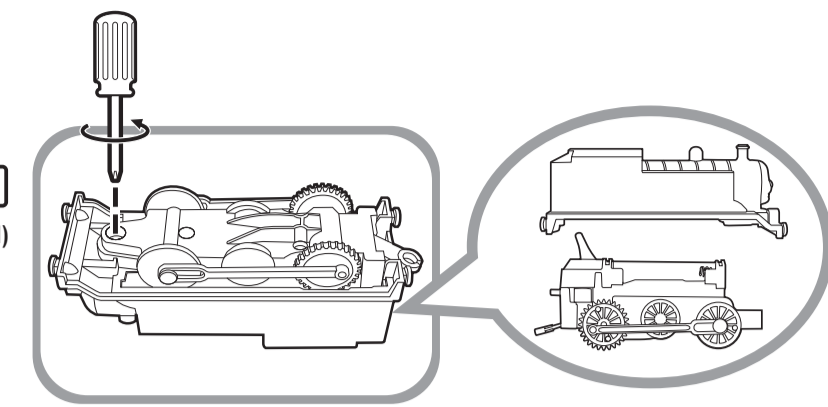
CHY03-0970
 1100717480-DCM



BATTERY INFORMATION

BATTERY INSTALLATION
 Access the battery compartment by unscrewing and separating the top half of the engine from the bottom half of the engine. Install the batteries as indicated inside the battery compartment. Re-assemble the two halves of the engine, re-insert the screw and tighten. If the product begins to malfunction, check the battery installation. You may need to reset the electronics by removing the batteries and reinstalling them. If the product continues to malfunction or no longer operates, remove the batteries from the toy and replace them with fresh batteries. Requires 2 "AAA" (LR03) batteries.

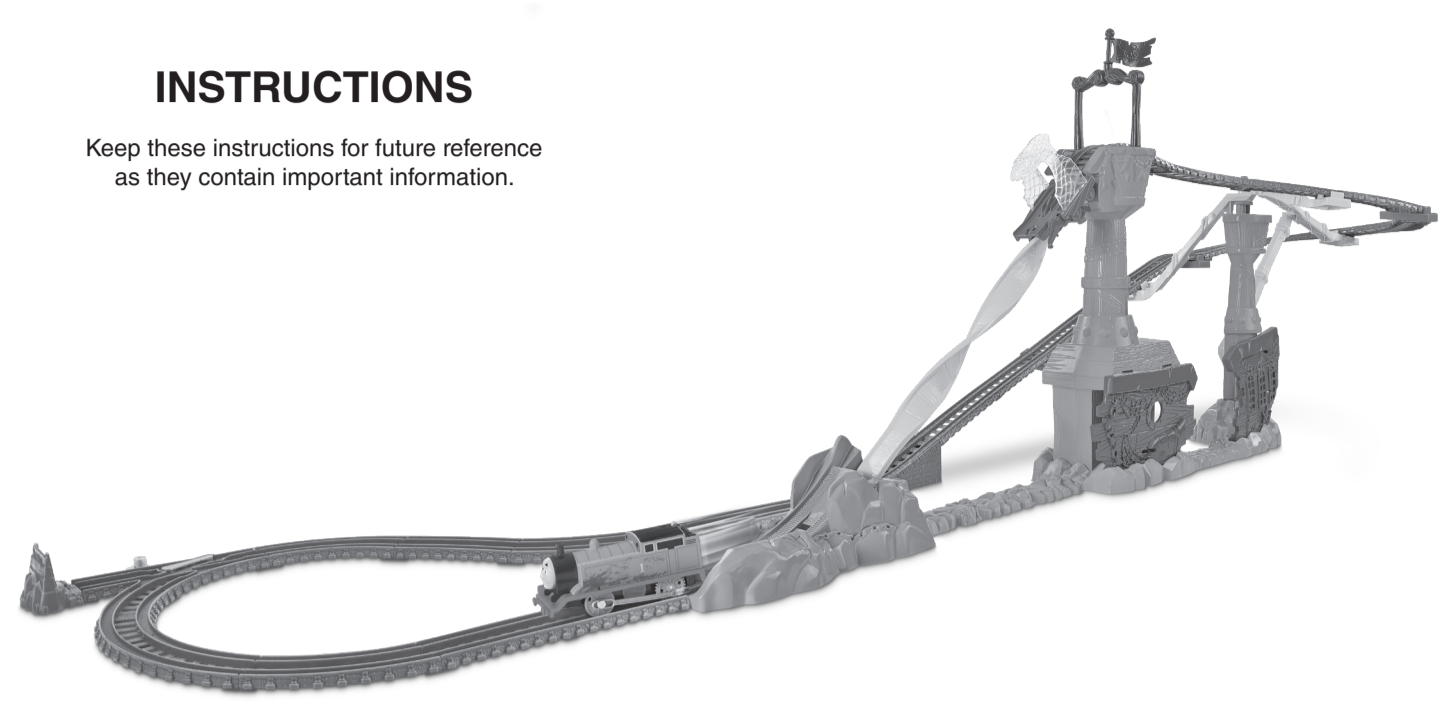
Required tool: Phillips screwdriver (not included)



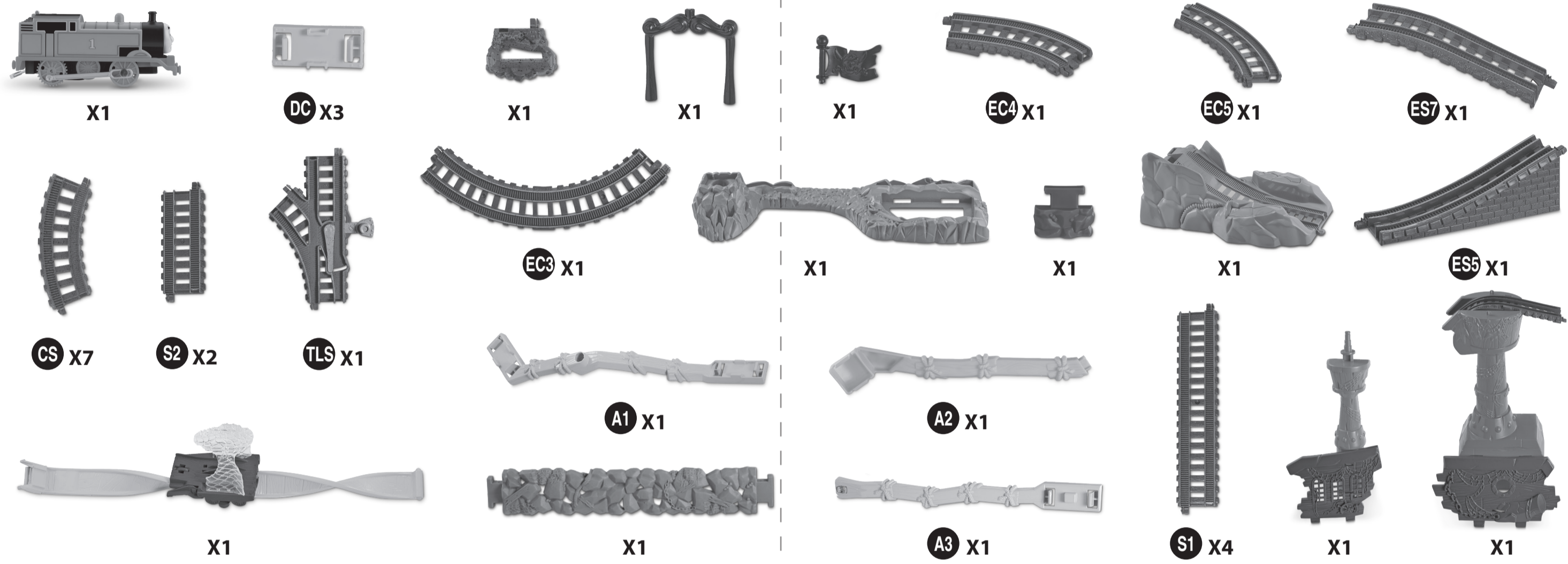
BATTERY SAFETY INFORMATION
 In exceptional circumstances batteries may leak fluids that can cause a chemical burn injury or ruin your product. To avoid battery leakage:
 • Non-rechargeable batteries are not to be recharged.
 • Rechargeable batteries are to be removed from the product before being charged.
 • Rechargeable batteries are only to be charged under adult supervision.
 • Do not mix alkaline, standard (carbon-zinc), or rechargeable (nickel-cadmium) batteries.
 • Do not mix old and new batteries.
 • Only batteries of the same or equivalent type as recommended are to be used.
 • Batteries are to be inserted with the correct polarity.
 • Exhausted batteries are to be removed from the product.
 • The supply terminals are not to be short-circuited.
 • Dispose of battery(ies) safely.
 • Do not dispose of this product in a fire. The batteries inside may explode or leak.

INSTRUCTIONS

Keep these instructions for future reference as they contain important information.



WHAT'S INCLUDED



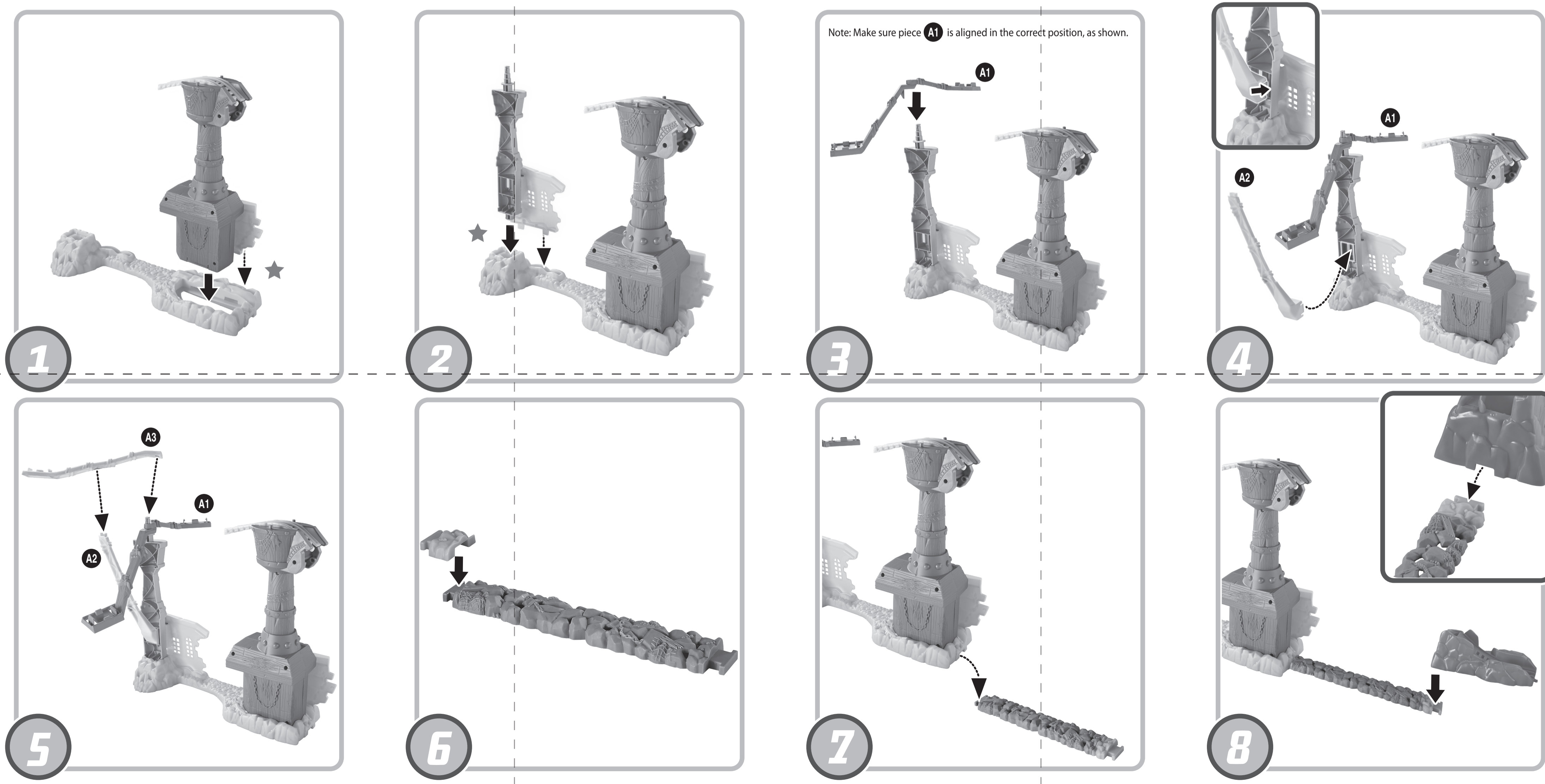
HELPFUL HINTS

- ★ **ONE-TIME SNAPS:** Assembly steps that are marked with a star are "one-time snaps". Once these parts are put together, they cannot be taken apart.
- Track marking codes are found on the bottom of tracks.
- While connecting the track (ES7) that is marked with a triangle, make sure the side with the triangle is aligned to the lower track.
- If the engine is stuck, as shown, press the trigger to release the engine and reset the carriage by raising it to the top.
- Some track sections (EC4, EC5, ES7, EC3) are intentionally curved, they are not damaged.

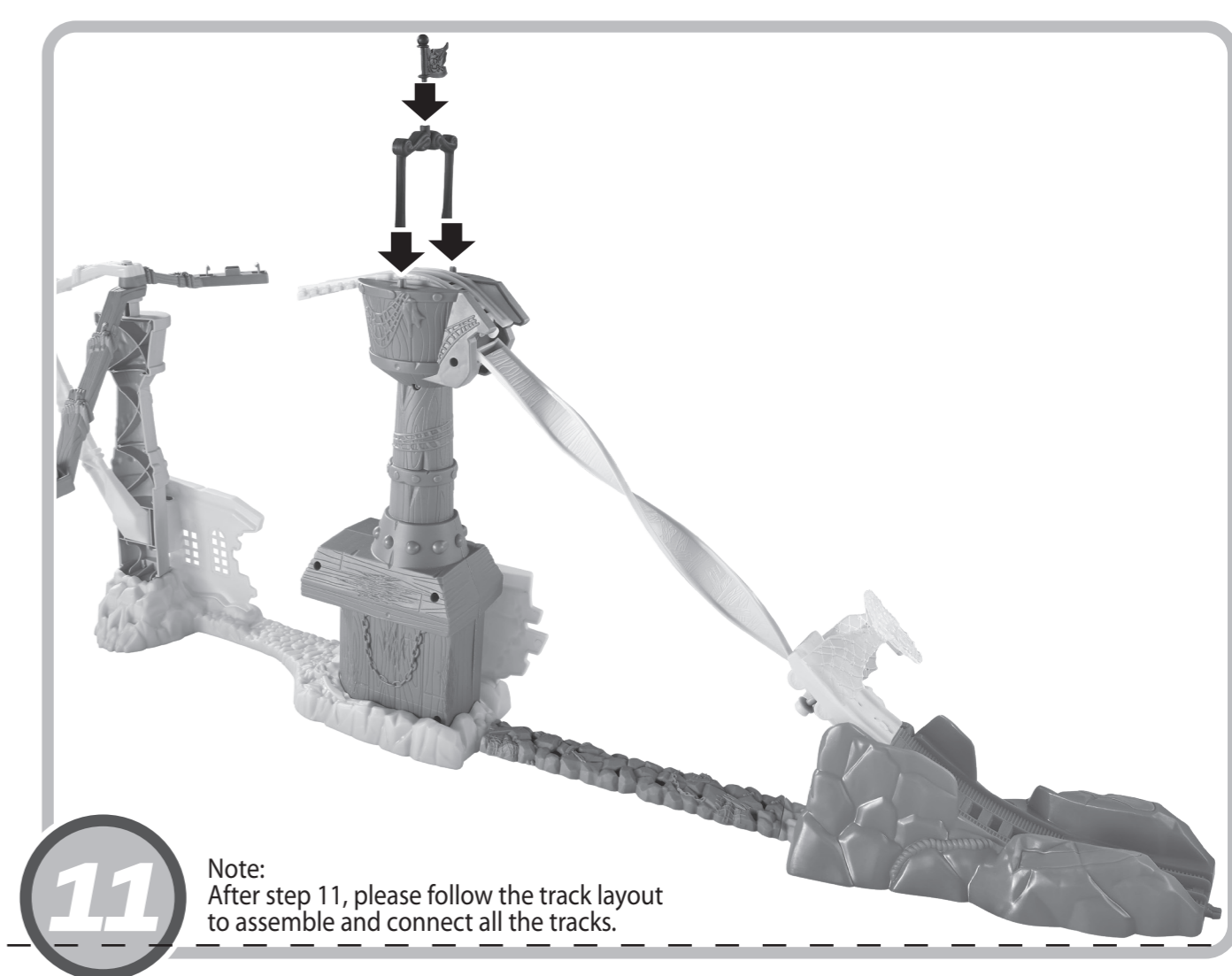
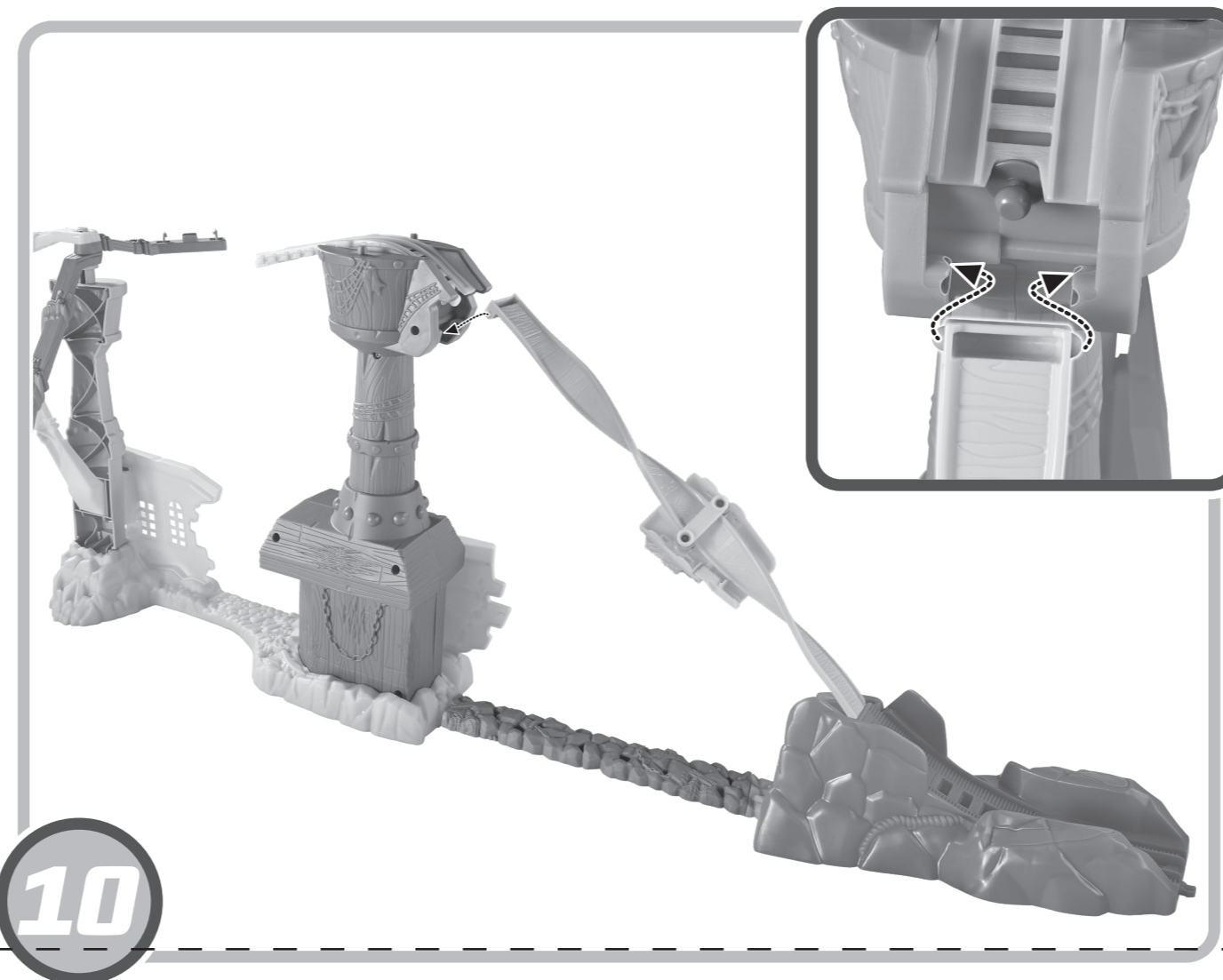
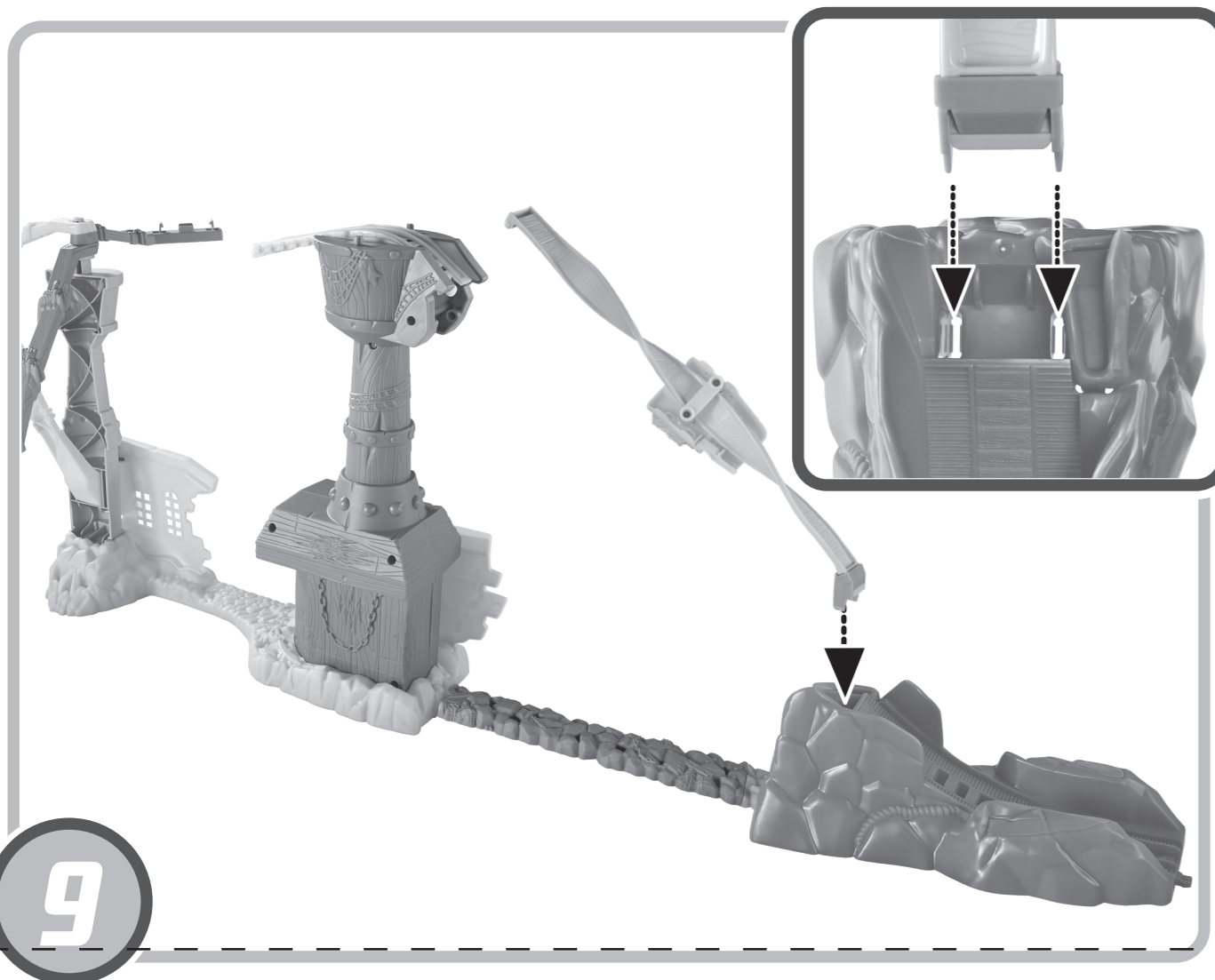
Note: Some engines may not work on this track set.

ADULT ASSEMBLY REQUIRED. No tools needed.

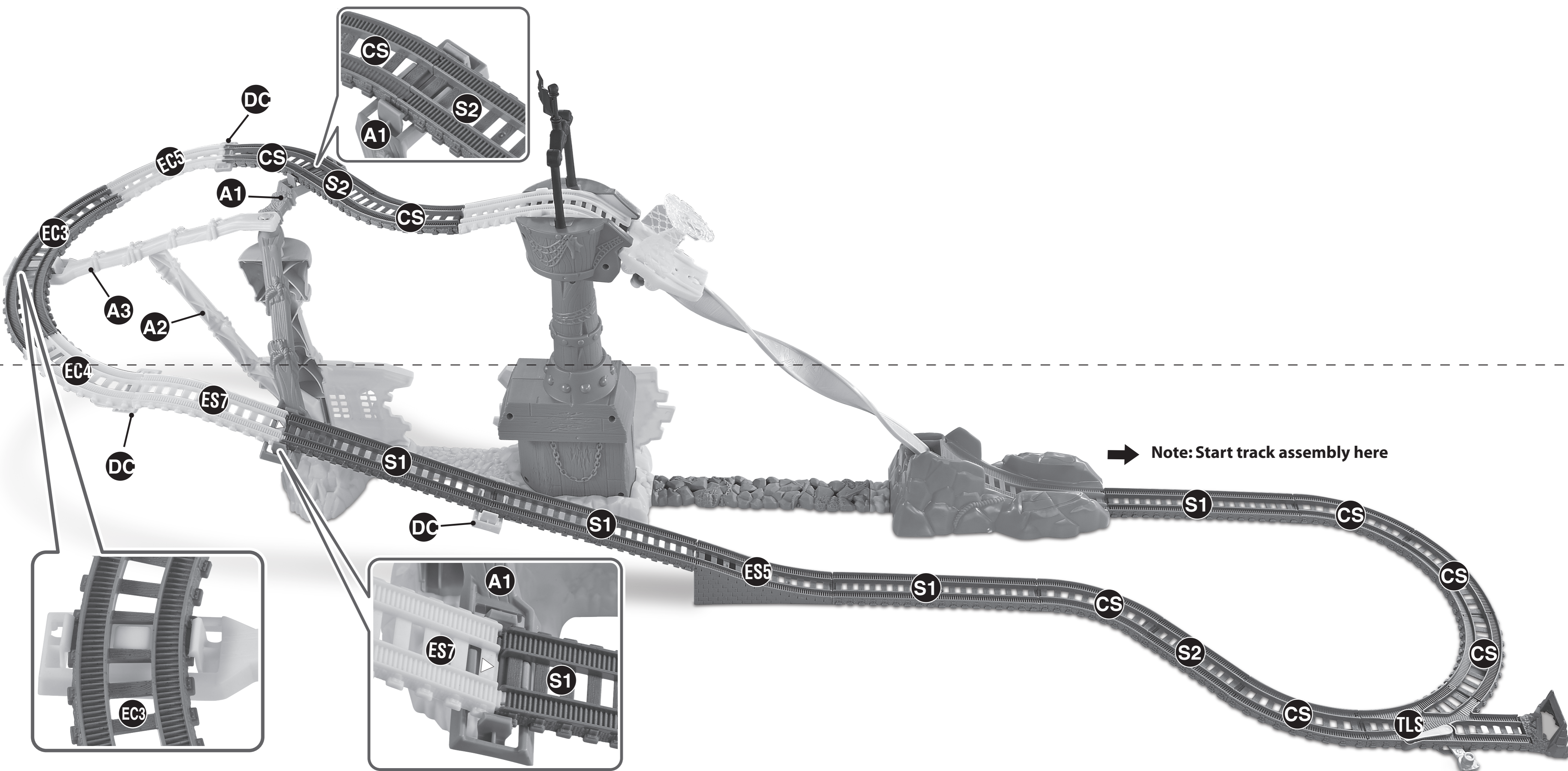
ASSEMBLY



ASSEMBLY

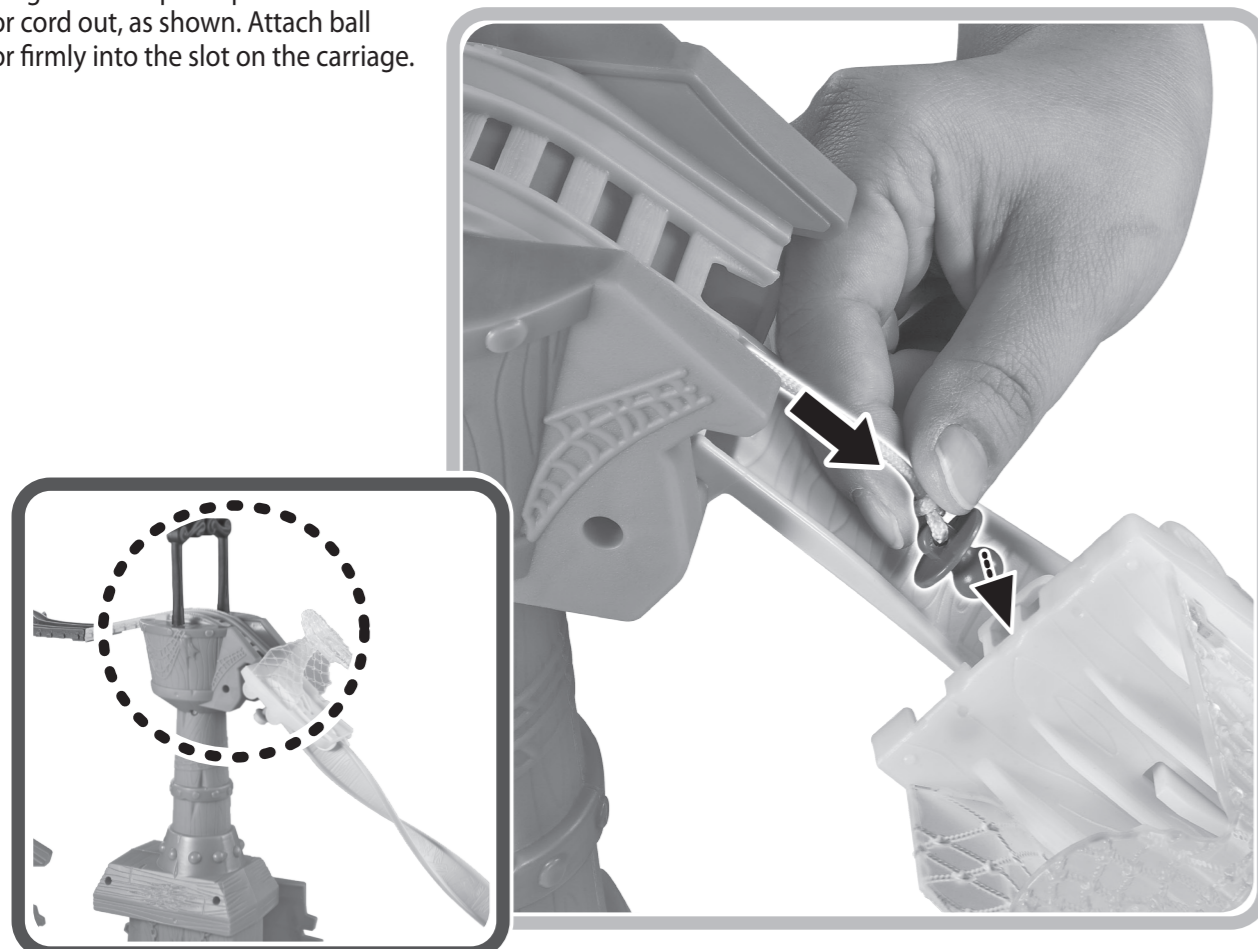


TRACK LAYOUT



BEFORE YOU PLAY

Raise carriage to the top and pull ball connector cord out, as shown. Attach ball connector firmly into the slot on the carriage.



HOW TO PLAY

1 Start by sending Thomas up the steep incline.



2 After spiraling downward from the top of the mast, Thomas continues his journey and the carriage resets automatically.

