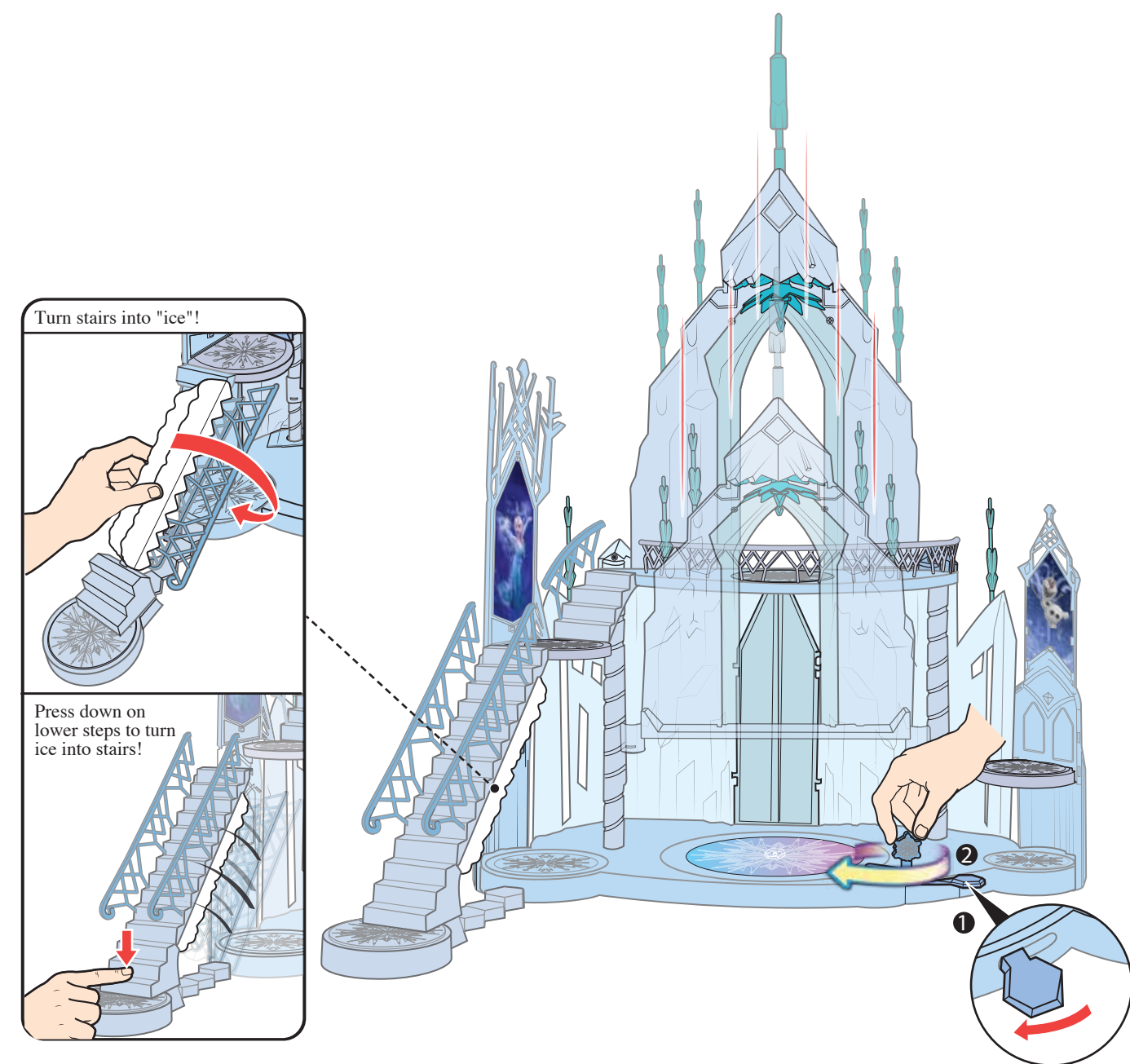
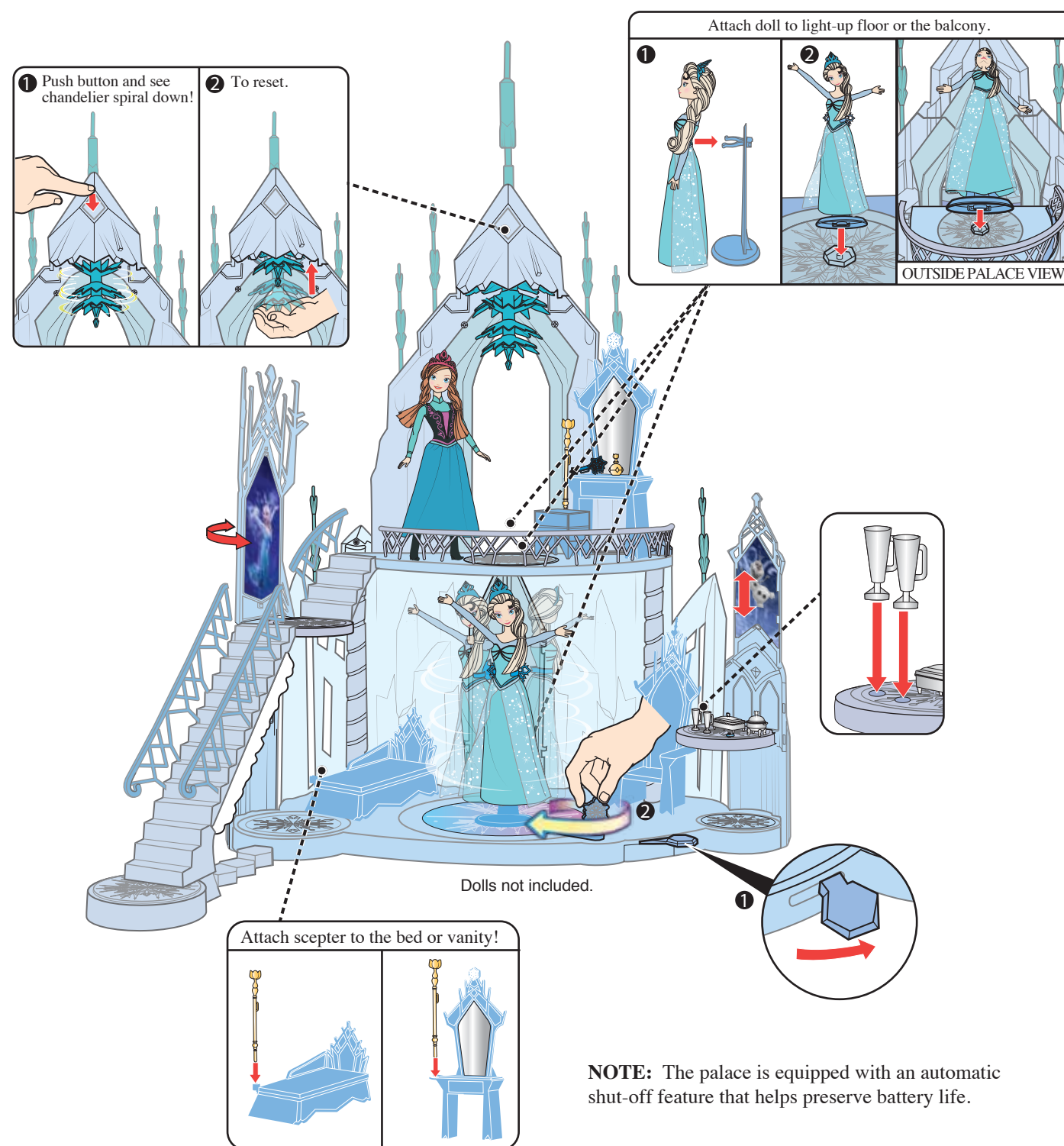


A. Rotate handle to raise palace!

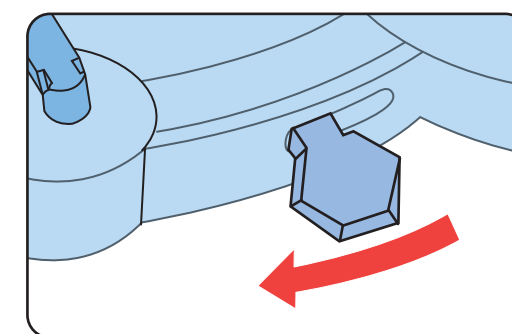


B. Rotate handle for spinning light-up floor!

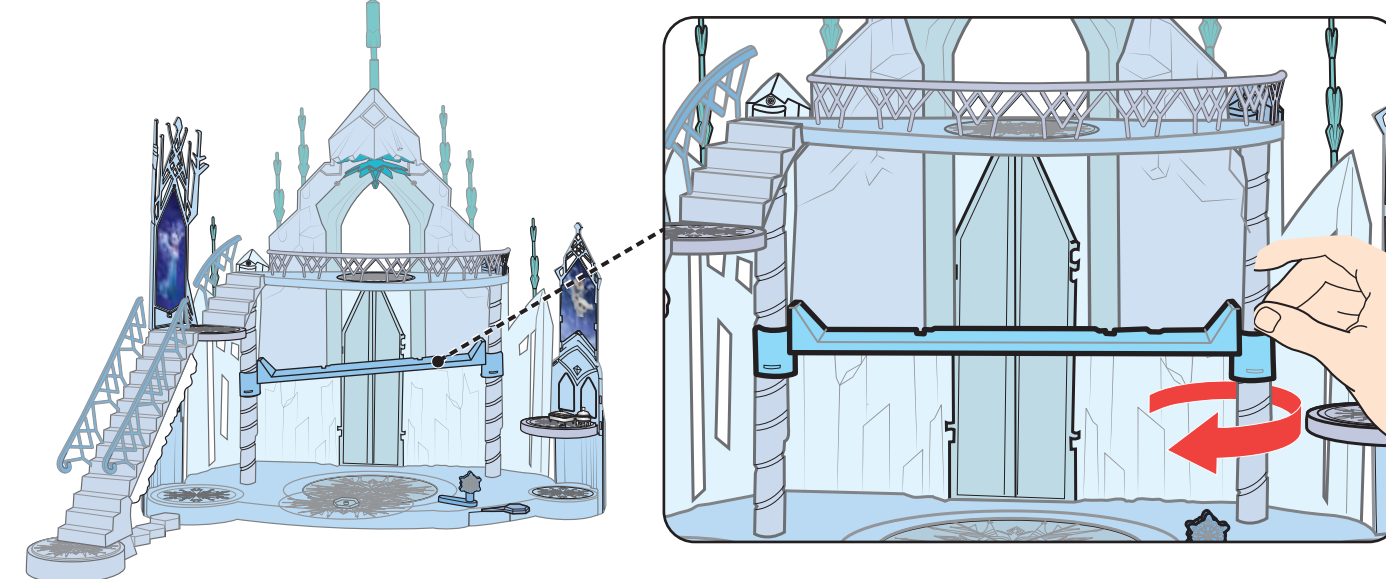


If palace does not raise properly, try the following before rotating handle again:

A. Make sure the switch is in the palace raising position.



B. Make sure one side of the platform is not higher than the other. If it is, rotate the pillar on the higher side clockwise to align the platform.



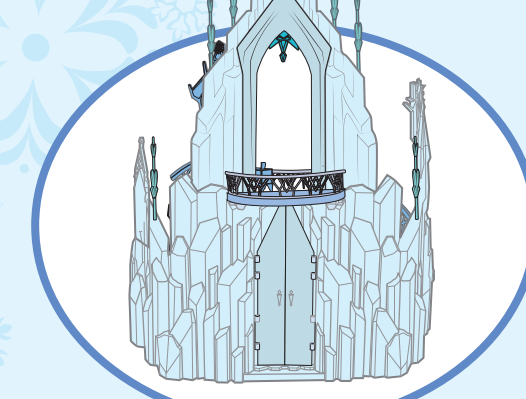
CONSUMER INFORMATION

Need Assistance? Visit [service.mattel.com](http://service.mattel.com) or call 1-800-524-8697 (U.S. and Canada only).

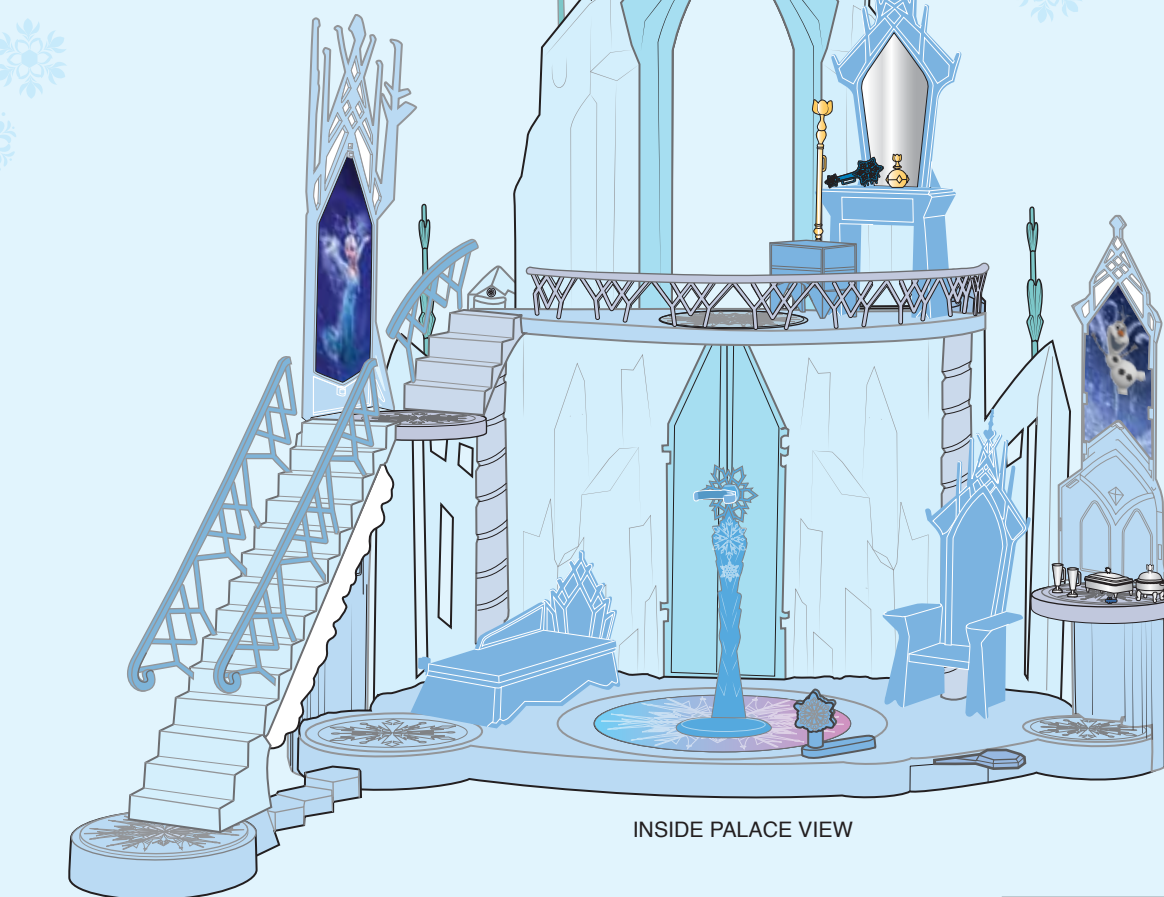
SERVICE.MATTEL.COM

Consumer Services - Mattel, Inc., 636 Girard Avenue, East Aurora, NY 14052, U.S.A. 1-800-524-8697. Mattel Australia Pty. Ltd., Richmond, Victoria, 3121. Consumer Advisory Service - 1300 135 312. Mattel East Asia Ltd., Room 503-09, North Tower, World Finance Centre, Harbour City, Tsimshatsui, HK, China. Tel: (852) 3185-6500. Dilmport & Diedarkan Oleh: Mattel Southeast Asia Pte. Ltd., No 19-1, Tower 3 Avenue 7, Bangsar South City, No 8, Jalan Kerinchi, 59200 Kuala Lumpur, Malaysia. Tel: 03-78803817, Fax: 03-78803867. Manufactured for and imported into the EU by: Mattel Europa B.V., Gondel 1, 1186 MJ Amstelveen, Nederland. Additionally distributed in the EU by: Mattel U.K. Ltd., Vanwall Business Park, Maidenhead SL6 4UB. Helpline 01628 500303.

Elsa's Ice Magic Palace INSTRUCTIONS



OUTSIDE PALACE VIEW



INSIDE PALACE VIEW



X3 AAA(LR03) ALKALINE BATTERIES REQUIRED NOT INCLUDED  
ADULT ASSEMBLY REQUIRED

Palace should be played on ground level for best results.

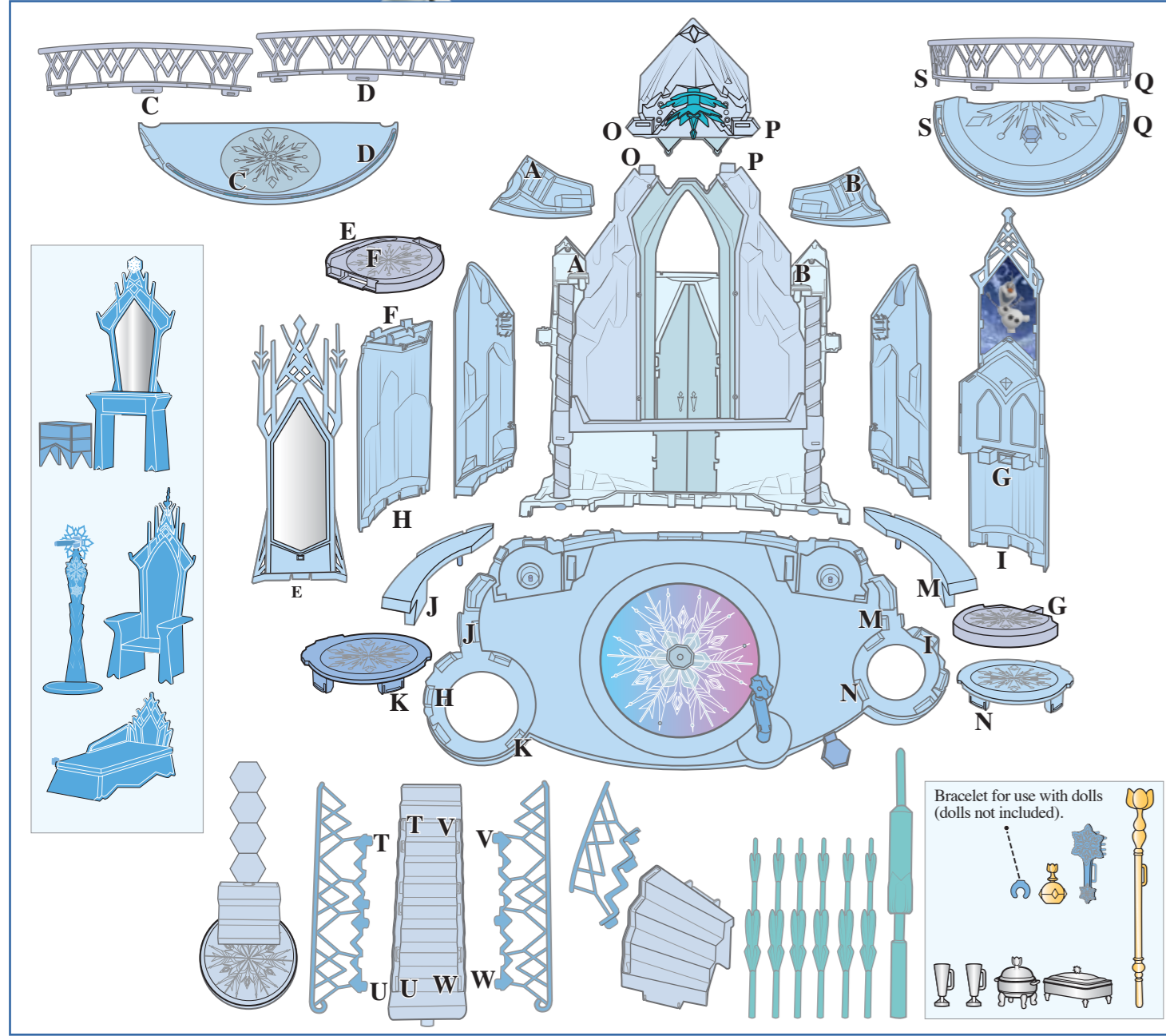


©2015 Mattel. All Rights Reserved. ® and ™ designate U.S. trademarks of Mattel, except as noted.

WARNING: CHOKING HAZARD - Small parts. Not for children under 3 years.



Please remove everything from the package and compare to the contents shown here. Colors and decorations may vary. If any items are missing, please contact your local Mattel office. Keep these instructions for future reference as they contain important information.



1

BATTERY INSTALLATION

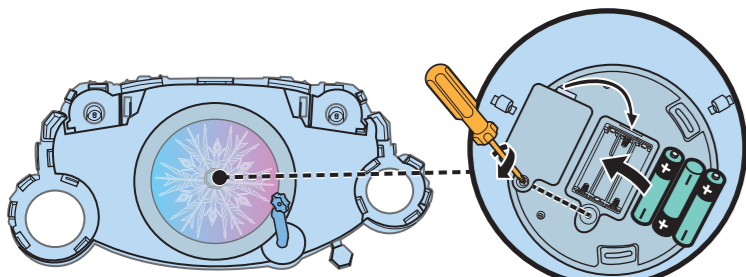
• Requires 3 AAA (LR03) alkaline batteries (not included).

• Unscrew the battery cover with a Phillips head screwdriver (not included). • Install 3 new AAA (LR03) alkaline batteries in the orientation (+/-) shown. • Replace battery cover and tighten screw. • Replace the batteries if lights dim. • For longer life, use alkaline batteries.

BATTERY SAFETY INFORMATION

In exceptional circumstances batteries may leak fluids that can cause a chemical burn injury or ruin your product. To avoid battery leakage:  
 • Non-rechargeable batteries are not to be recharged. • Rechargeable batteries are to be removed from the product before being charged. • Rechargeable batteries are only to be charged under adult supervision. • Do not mix alkaline, standard (carbon-zinc), or rechargeable (nickel-cadmium) batteries. • Do not mix old and new batteries. • Only batteries of the same or equivalent type as recommended are to be used. • Batteries are to be inserted with the correct polarity. • Exhausted batteries are to be removed from the product. • The supply terminals are not to be short-circuited. • Dispose of battery(ies) safely. • Do not dispose of this product in a fire. The batteries inside may explode or leak.

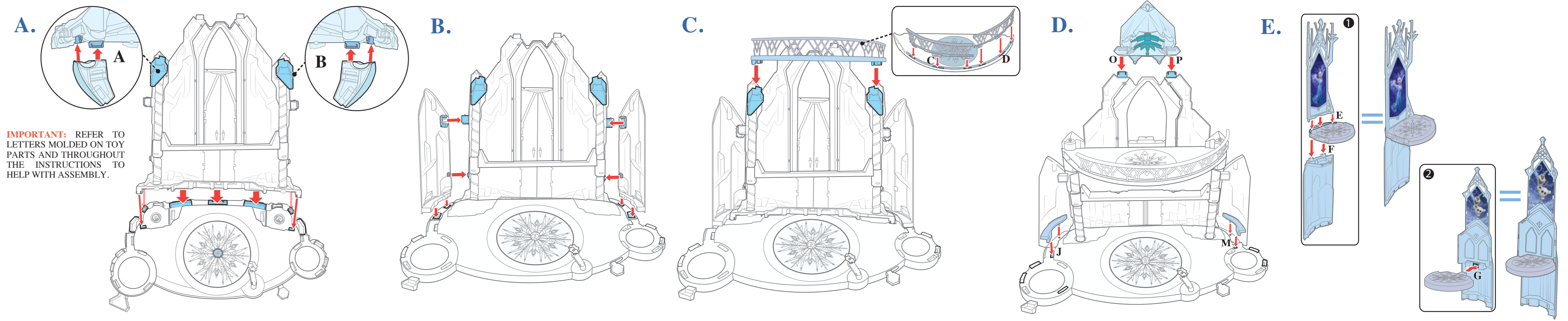
♻️ Protect the environment by not disposing of this product with household waste (2002/96/EC). Check your local authority for recycling advice and facilities.



BOTTOM VIEW

2

ASSEMBLY



**IMPORTANT:** REFER TO LETTERS MOLDED ON TOY PARTS AND THROUGHOUT THE INSTRUCTIONS TO HELP WITH ASSEMBLY.

