



Keep this instruction sheet for future reference,
as it contains important information.

Requires two C (LR14) **alkaline** batteries for soother
operation and two AAA (LR03) **alkaline** batteries for
remote operation (batteries not included).

Adult assembly is required.

Tool required for assembly: Phillips screwdriver (not included).

Consumer Information



WARNING

Prevent Entanglement Injury

- Keep mobile out of baby's reach.
- Remove mobile portion of product from crib or playpen when baby begins to push up on hands and knees.
- This product may not attach to all crib designs. Do not add additional strings or straps to attach to crib or playpen.

IMPORTANT! Always attach all provided fasteners (strings, straps, clamps, etc.) tightly to a crib or playpen according to the instructions. Check frequently.

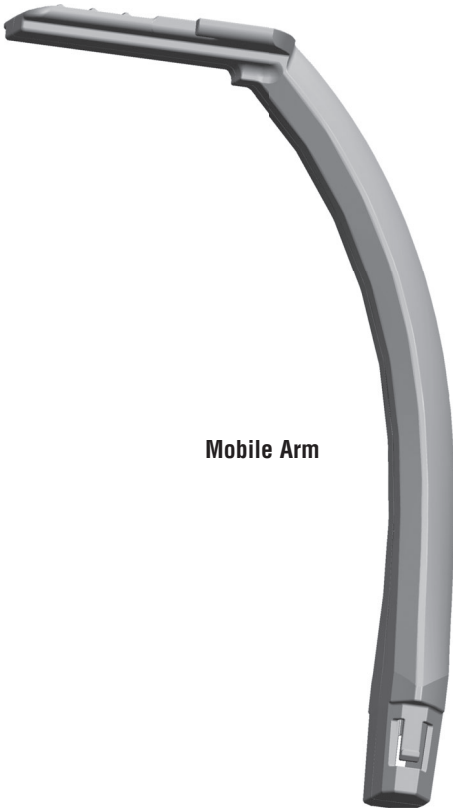
- Use as a mobile from birth until 5 months.
- If intended for use on a dresser, wall or ceiling do not place or mount the product within the reach of a standing baby.
- Wipe this toy with a clean cloth dampened with a mild soap and water solution. Do not immerse this toy.

Battery Safety Information

In exceptional circumstances, batteries may leak fluids that can cause a chemical burn injury or ruin your product. To avoid battery leakage:

- Do not mix old and new batteries or batteries of different types: alkaline, standard (carbon-zinc) or rechargeable (nickel-cadmium).
- Insert batteries as indicated inside the battery compartment.
- Remove batteries during long periods of non-use. Always remove exhausted batteries from the product. Dispose of batteries safely. Do not dispose of product in a fire. The batteries inside may explode or leak.
- Never short-circuit the battery terminals.
- Use only batteries of the same or equivalent type, as recommended.
- Do not charge non-rechargeable batteries.
- Remove rechargeable batteries from the product before charging.
- If removable, rechargeable batteries are used, they are only to be charged under adult supervision.

Parts



Mobile Arm



Mobile Canopy



Battery Door



Remote



Soother

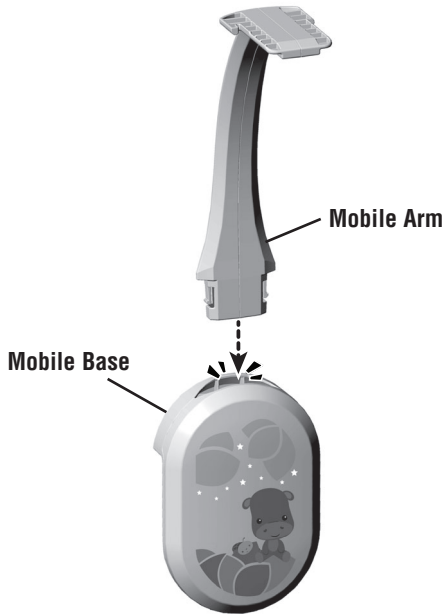


Mobile Base

Note: All of the screws used to assemble this toy are attached to the product. Follow these instructions carefully to fully secure the screws. Tighten and loosen all screws with a Phillips screwdriver. Do not over-tighten the screws.

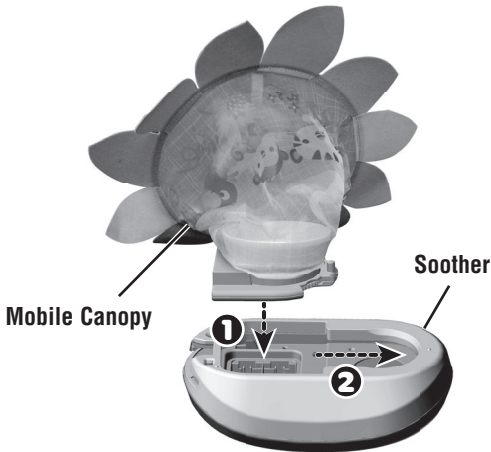
Mobile Assembly/Setup

Assembly step 1 is a one-time/permanent assembly.
Steps 2-4 complete assembly/setup for mobile use.



1

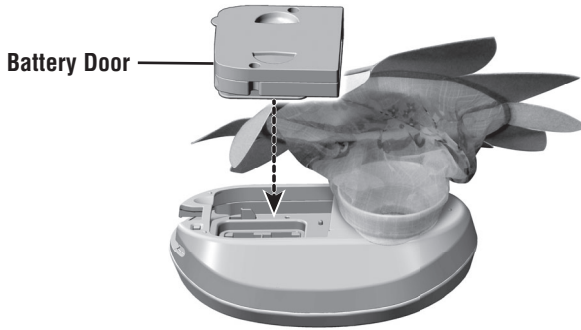
- "Snap" the mobile arm into the mobile base.



2

- Fit the mobile canopy into the opening in the soother ①, then slide the mobile canopy until you hear a "click" ②.
Hint: The mobile canopy is designed to fit onto the soother one way. If it does not seem to fit, turn it around and try again.

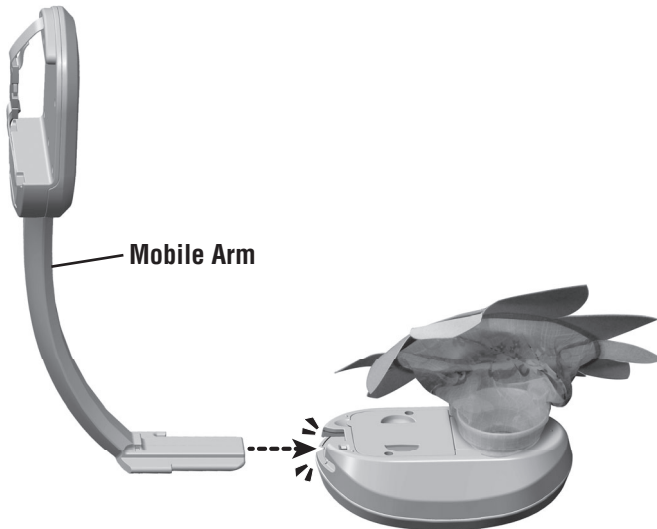
Mobile Assembly/Setup



3

IMPORTANT! The battery door must be assembled to the soother for proper function. You may want to assemble the batteries in the soother before completing the assembly/setup. See the **Battery Installation** section.

- Fit the battery door into the opening in the soother.
- *Hint: The battery door is designed to fit one way. If it does not seem to fit, turn it around and try again.*
- Tighten the screws in the battery door.



4

- **“Snap”** the mobile arm into the socket in the soother.

Consumer Information



CONSUMER ASSISTANCE

1-800-432-5437 (US & Canada)
1300 135 312 (Australia)

service.fisher-price.com

Fisher-Price, Inc., 636 Girard Avenue, East Aurora, NY 14052.
Hearing-impaired consumers: 1-800-382-7470.

Outside the United States:

Canada: Mattel Canada Inc., 6155 Fremont Blvd.,
Mississauga, Ontario L5R 3W2; www.service.mattel.com.

Great Britain: Mattel UK Ltd, Vanwall Business Park,
Maidenhead SL6 4UB. Helpline: 01628 500303.
www.service.mattel.com/uk

Mattel Europa B.V., Gondel 1, 1186 MJ Amstelveen, Nederland.

Australia: Mattel Australia Pty. Ltd., 658 Church Street,
Locked Bag #870, Richmond, Victoria 3121 Australia.

New Zealand: 16-18 William Pickering Drive,
Albany 1331, Auckland.

CAN ICES-3 (B)/NMB-3 (B)

Operation is subject to the following two conditions: (1) this device may not cause interference, and (2) this device must accept any interference, including interference that may cause undesired operation of the device.

L'utilisation de ce dispositif est autorisée seulement aux conditions suivantes : (1) il ne doit pas produire de brouillage et (2) il doit pouvoir tolérer tout brouillage radioélectrique reçu, même si ce brouillage est susceptible de compromettre son fonctionnement.



- Protect the environment by not disposing of this product with household waste (2012/19/EU). Check your local authority for recycling advice and facilities.

FCC STATEMENT (UNITED STATES ONLY)

This equipment has been tested and found to comply with the limits for a Class B digital device, pursuant to Part 15 of the FCC rules. These limits are designed to provide reasonable protection against harmful interference in a residential installation. This equipment generates uses and can radiate radio frequency energy and, if not installed and used in accordance with the instructions, may cause harmful interference to radio communications. However, there is no guarantee that interference will not occur in a particular installation. If this equipment does cause harmful interference to radio or television reception, which can be determined by turning the equipment off and on, the user is encouraged to try to correct the interference by one or more of the following measures:

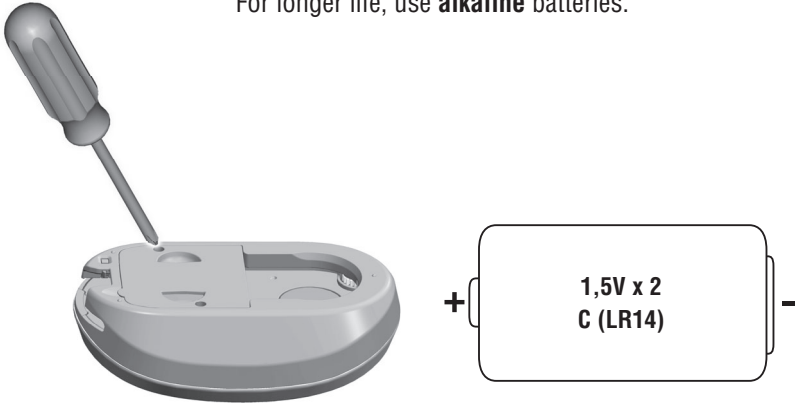
- Reorient or relocate the receiving antenna.
- Increase the separation between the equipment and receiver.
- Consult the dealer or an experienced radio/TV technician for help.

NOTE: Changes or modifications not expressly approved by the manufacturer responsible for compliance could void the user's authority to operate the equipment.

This device complies with Part 15 of the FCC Rules. Operation is subject to the following two conditions: (1) This device may not cause harmful interference, and (2) this device must accept any interference received, including interference that may cause undesired operation.

Battery Installation

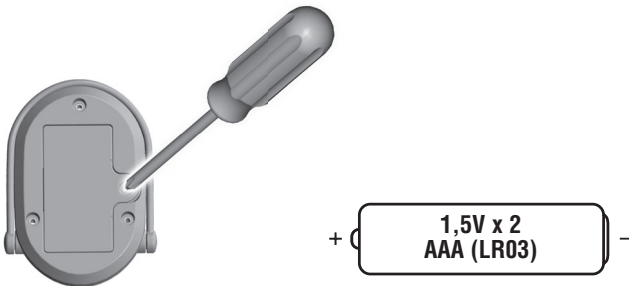
For longer life, use **alkaline** batteries.



Soother

- Loosen the screws in the battery compartment door with a Phillips screwdriver and remove the door.
- Insert two C (LR14) **alkaline** batteries.
- Replace the battery compartment door and tighten the screws.

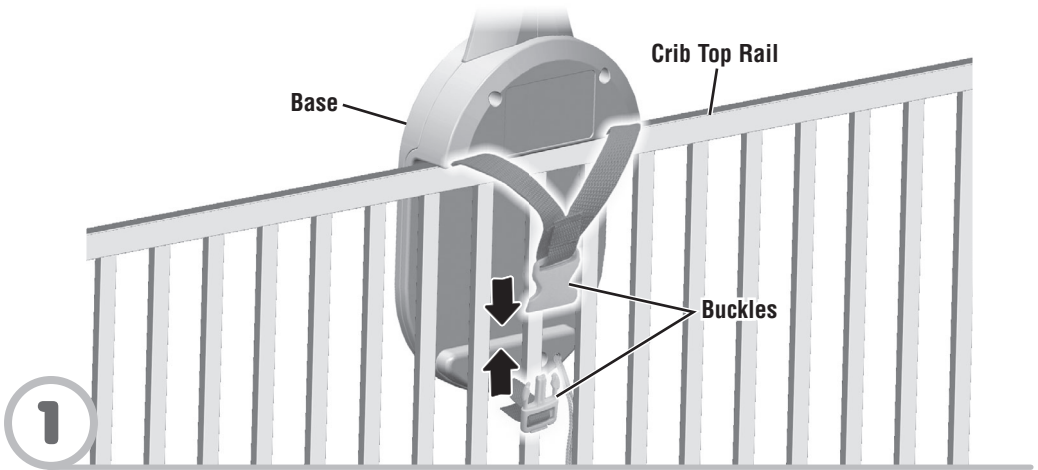
IMPORTANT! Under normal use conditions, the batteries in the soother will require replacement more often than the batteries in the remote. When sounds or lights become faint or stop, it's time for an adult to change the batteries.



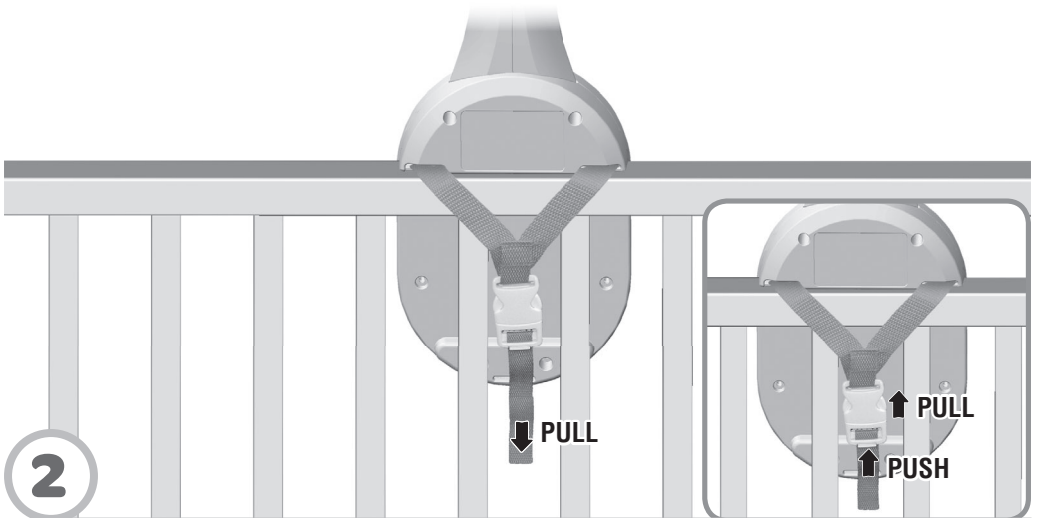
Remote

- Loosen the screw in the battery compartment door with a Phillips screwdriver and remove the door.
- Insert two AAA (LR03) **alkaline** batteries.
- Replace the battery compartment door and tighten the screw.
- If this product begins to operate erratically, you may need to reset the electronics. Remove the batteries and reinstall.

Mobile Crib Attachment

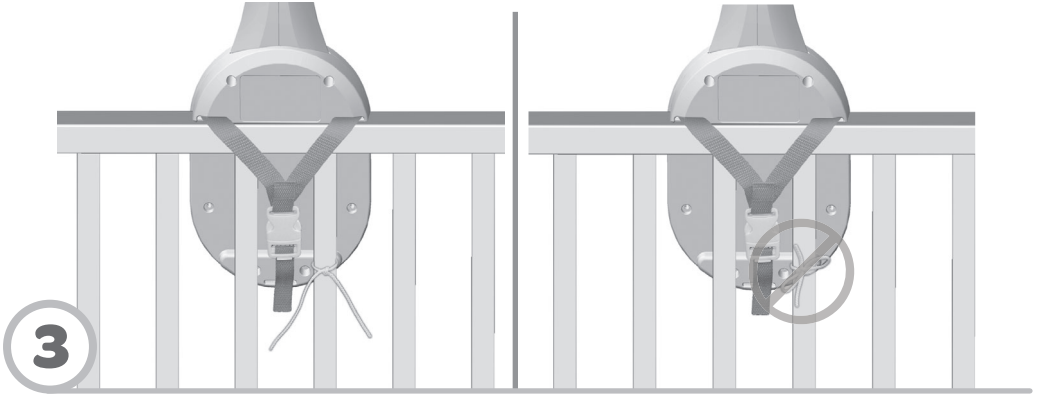


- Position the base so that the decorated side faces the inside of the crib.
- Fit the base onto the crib top rail.
- Make sure the top strap is hanging over the crib top rail. Pull the bottom strap through the crib rails.
- Buckle the straps. Make sure you hear a “click”.



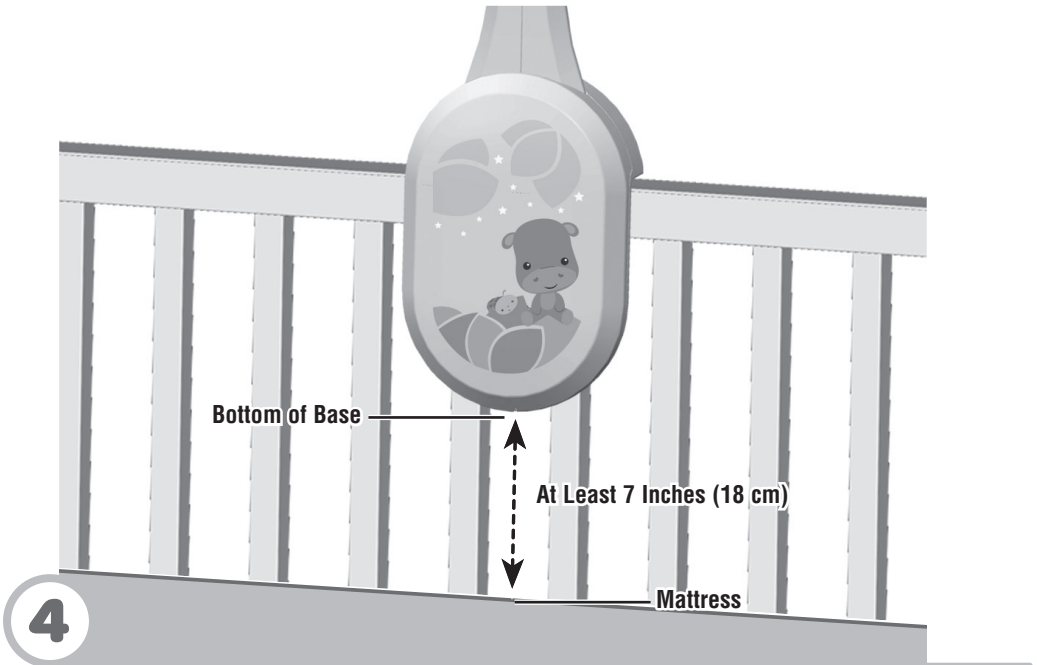
- Make sure the straps are tightened securely around the crib rail. Pull the free end of the strap to tighten on the rail.
- To loosen the strap for removal, push the tab under the buckle and pull the buckle up.

Mobile Crib Attachment



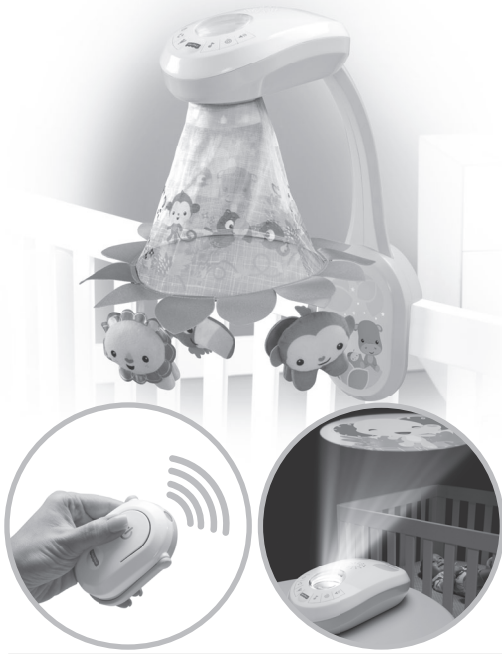
- Tie the base strings to a crib spindle.

Note: It is better to tie the strings in a knot than a bow, since a bow may be easily untied.



- If the distance between the base and the mattress is less than 7 Inches (18 cm), lower the crib mattress.

Remote Use



- In the unlikely event that use of the remote interferes with normal use of other remote controlled equipment, such as televisions or stereos, or use of other electronic or battery powered appliances interfere with operation of the mobile, do not use both at the same time.
- You may notice a loss of range between the remote and the soother when using in bright light. For best performance, avoid using the remote in areas of bright light. Move the soother or reduce the amount of light to improve performance.
- Position the soother so that the back points towards the area that the remote will be used. Make sure there is a clear path between the remote and the soother. Point the end of the remote toward the back of the soother and press the button.
- The soother is designed to go into sleep mode after approximately 48 hours. If the soother does not respond to the remote:
 - slide the power/volume switch off and back on, or
 - press a button on the soother, or
 - replace the batteries in the soother, or
 - replace the batteries in the remote.

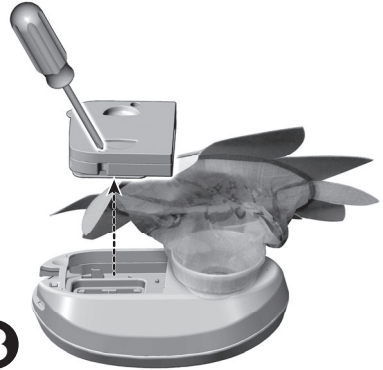
Control Panel Use



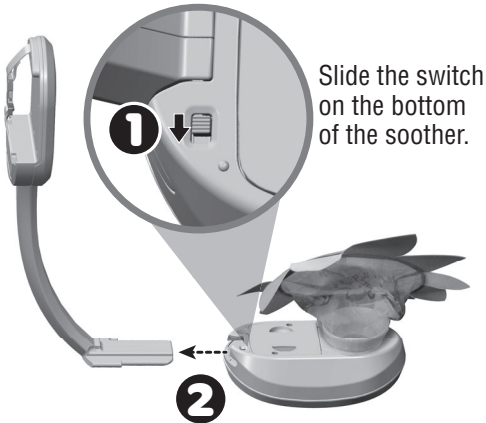
- Press the power button to turn the soother ON. Press the power button again to turn the soother OFF.
- Press the motion button to turn mobile motion ON. Press the button again to turn motion and projection OFF. Press the motion button again to turn on motion only.
Hint: The motion only works in crib mobile mode. In dresser top mode, the motion button will only turn projection lights on or off.
- Press the projection button to turn projection lights ON. Press the projection button again to turn projection lights OFF.
- Press the music button to start a song. Press the music button again to change the song. Press and hold the music button to turn music OFF.
- Press the sound selection button to turn on nature sounds. Press the sound selection button again to turn on white noise. Press and hold the sound selection button to turn sound effects OFF.
- Press the volume button to adjust the volume level.
Hint: Motion/projection time out after approximately 10 minutes. Music/sounds time out after approximately 30 minutes. Press the power button or the remote to restart the soother.
- Press the button on the remote to start or change music/sounds.

Convert to Dresser Top Soother

with ceiling projection!

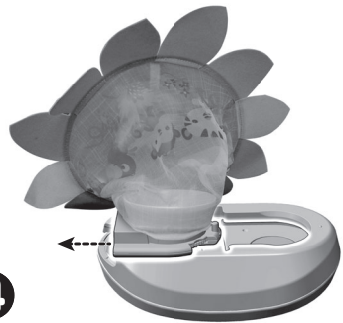


3 Loosen the screws in the battery compartment door and remove the door.

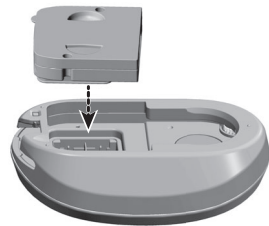


Slide the switch on the bottom of the soother.

2 While holding the switch down, remove the mobile arm from the soother.



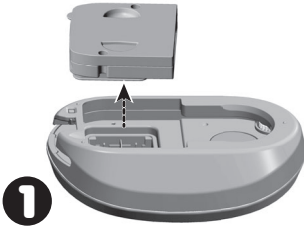
4 Slide the mobile canopy over and lift to remove from the soother.



5 Replace the battery compartment door and tighten the screws. Store the mobile arm and mobile canopy for future use.

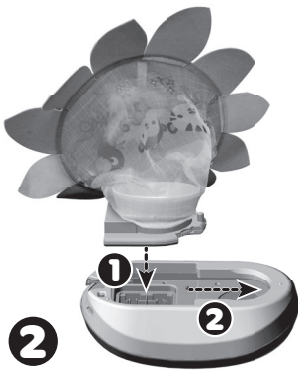
Convert to Crib Mobile

with canopy projection!



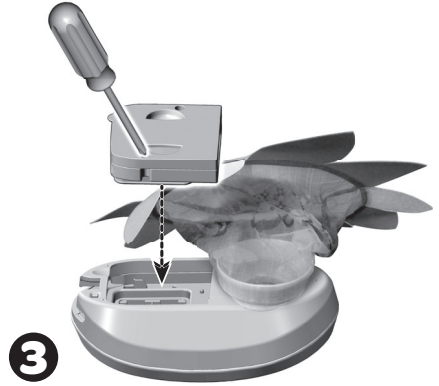
1

Loosen the screws in the battery compartment door and remove the door.



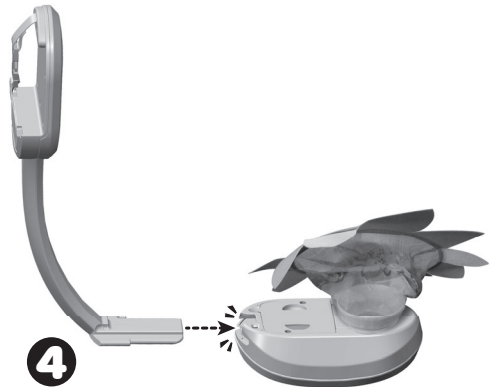
2

Fit the mobile canopy into the opening in the soother 1, then slide the mobile canopy until you hear a "click" 2.



3

Replace the battery compartment door and tighten the screws.



4

"Snap" the mobile arm into the socket in the soother.