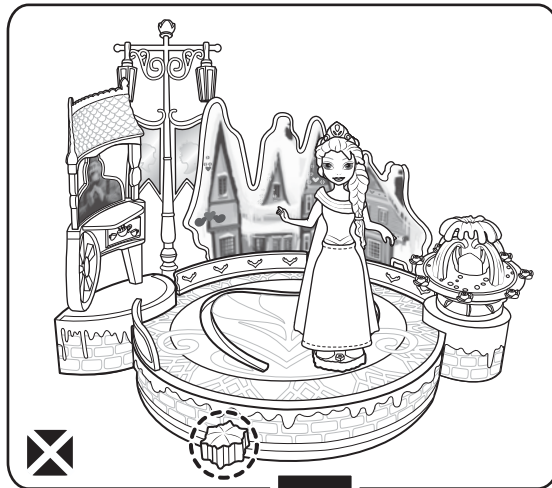


3

PERFORMANCE TIPS

For proper performance, the handle must be on the far right of the curve when Elsa is in the center of the rink.



Push handle to the far right when Elsa is in the center and the handle is out of position.

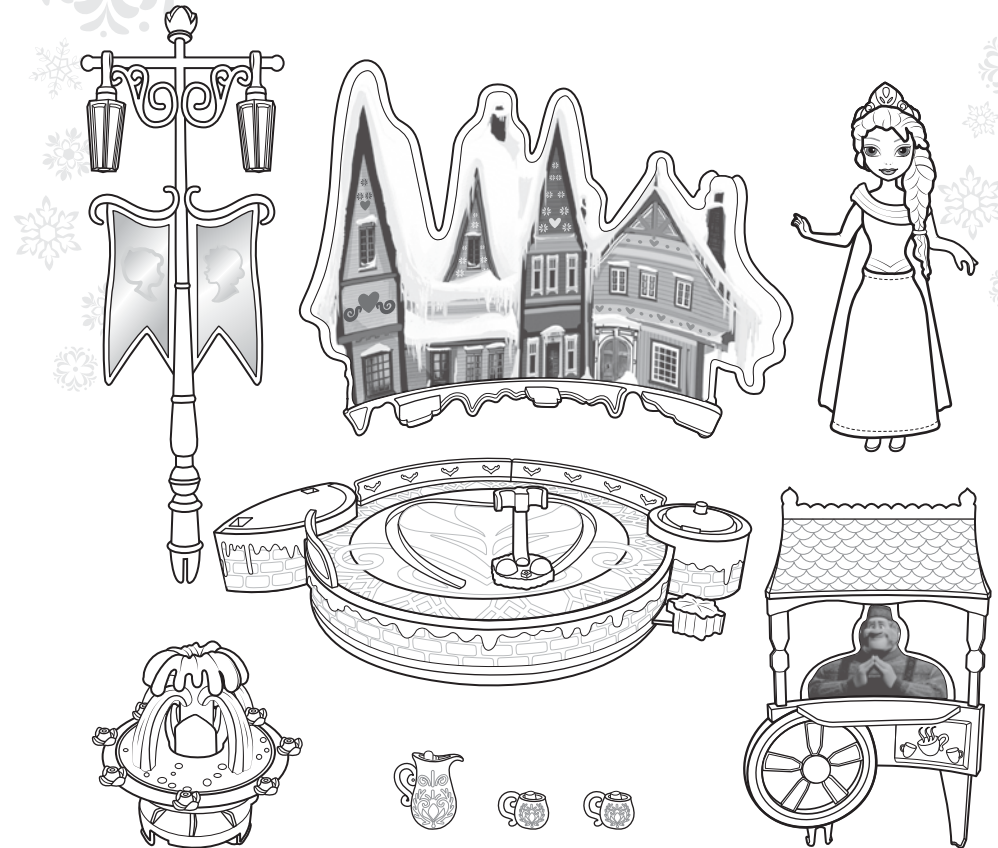


Elsa's Ice Skating Rink

INSTRUCTIONS

MATTEL
3+
 DFR88-0970
 1100649029-DOM

CONTENTS



Please remove everything from the package and compare to the contents shown here. If any items are missing, please contact your local Mattel office. Keep these instructions for future reference as they contain important information.

CONSUMER INFORMATION

Need Assistance? Visit service.mattel.com or call 1-800-524-8697 (US and Canada only).

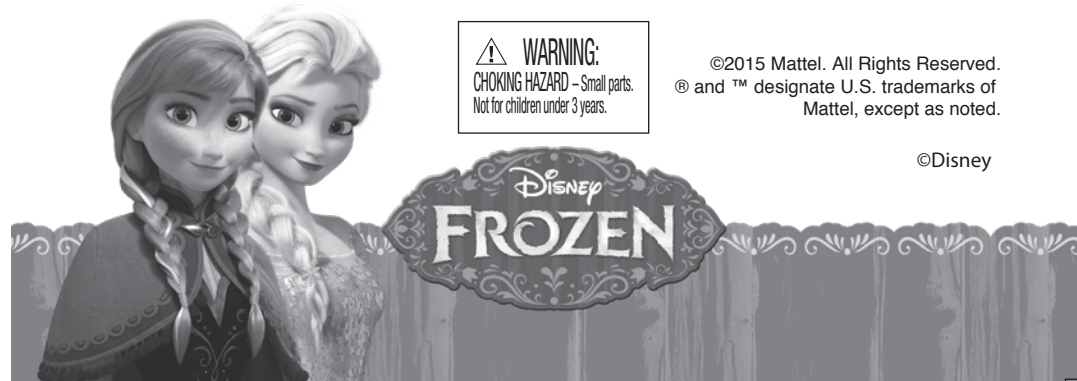
SERVICE.MATTEL.COM

Mattel, Inc., 636 Girard Avenue, East Aurora, NY 14052, U.S.A. Consumer Services 1-800-524-8697. Mattel U.K. Ltd., Vanwall Business Park, Maidenhead SL6 4UB. Helpline 01628 500303. Mattel Australia Pty., Ltd., Richmond, Victoria. 3121. Consumer Advisory Service - 1300 135 312. Mattel East Asia Ltd., Room 503-09, North Tower, World Finance Centre, Harbour City, Tsimshatsui, HK, China. Tel.: (852) 3185-6500. Diimport & Diedarkan Oleh: Mattel Southeast Asia Pte. Ltd., No 19-1, Tower 3 Avenue 7, Bangsar South City, No 8, Jalan Kerinchi, 59200 Kuala Lumpur, Malaysia. Tel: 03-78803817, Fax: 03-78803867.

WARNING:
 CHOKING HAZARD - Small parts.
 Not for children under 3 years.

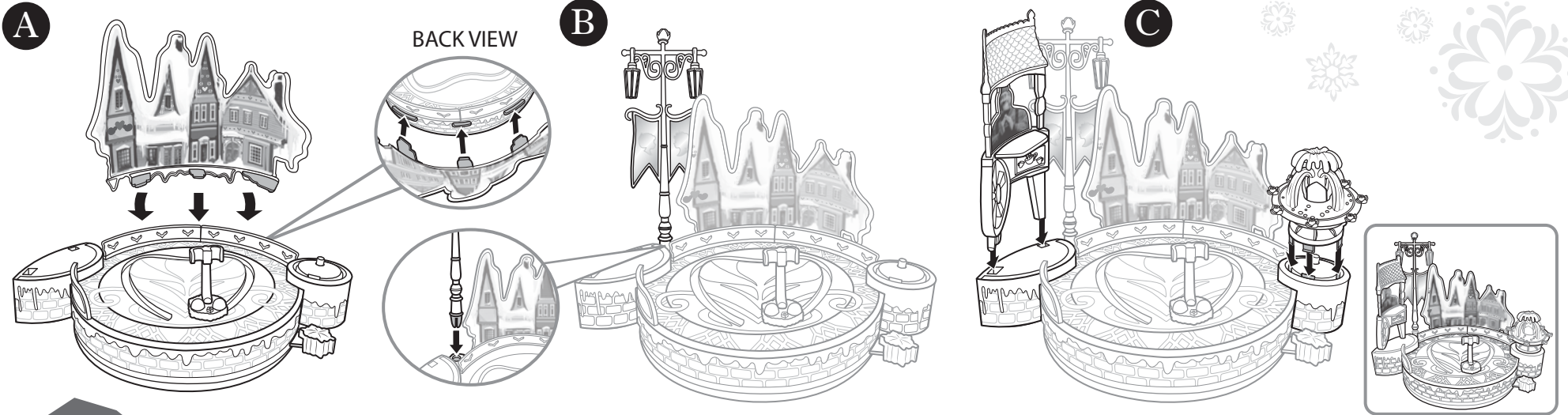
©2015 Mattel. All Rights Reserved.
 ® and ™ designate U.S. trademarks of Mattel, except as noted.

©Disney



1

ASSEMBLY



2

LET'S PLAY!

A Attach Elsa to the rink.

B Slide handle back and forth to see Elsa skate around the rink and fountain go up and down!

