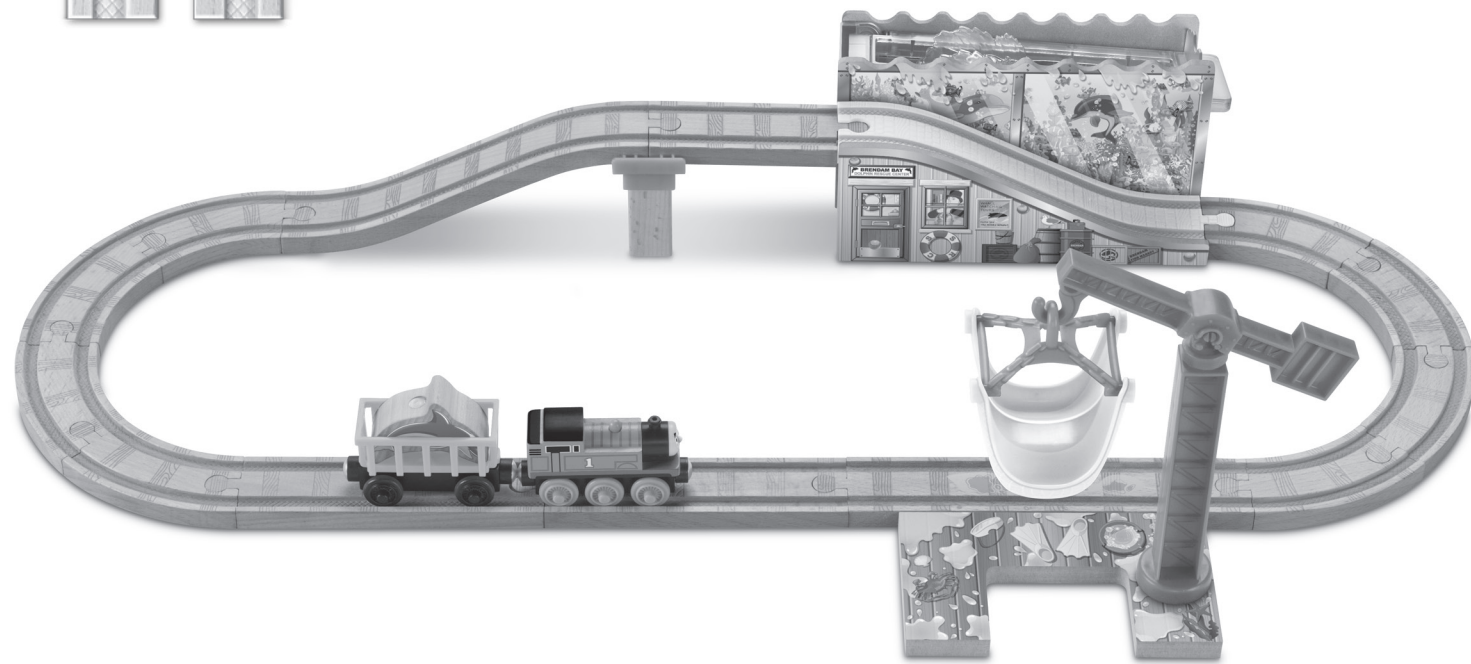




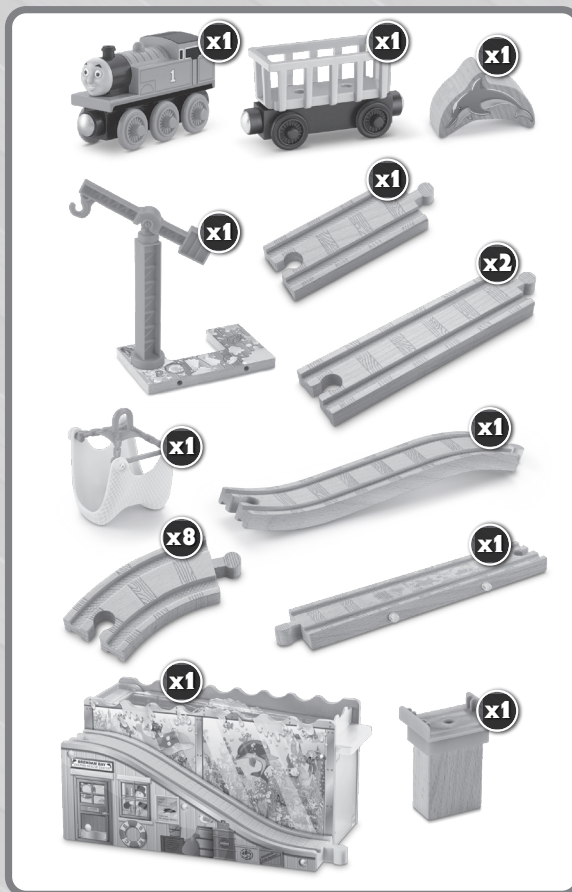
LEAP & SPLASH DOLPHIN RESCUE

INSTRUCTIONS

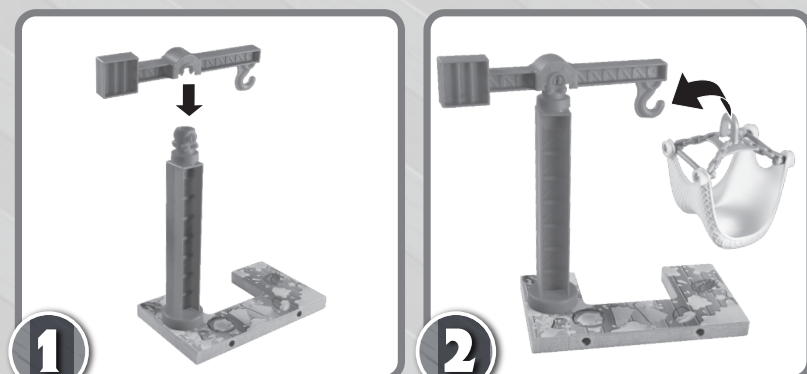
Keep these instructions for future reference as they contain important information.



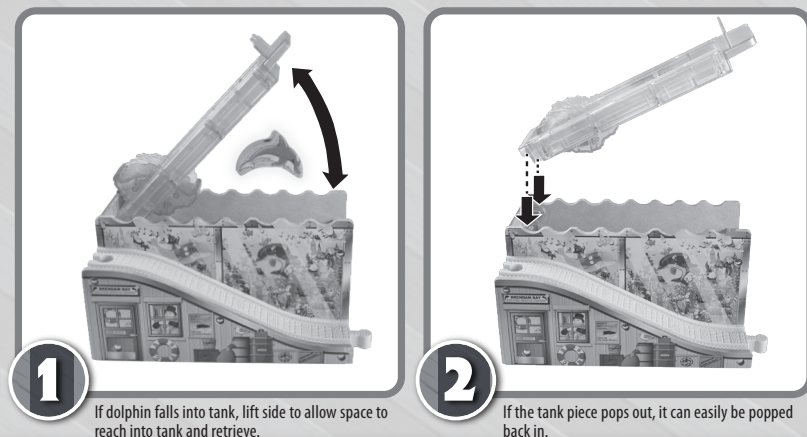
WHAT'S INCLUDED



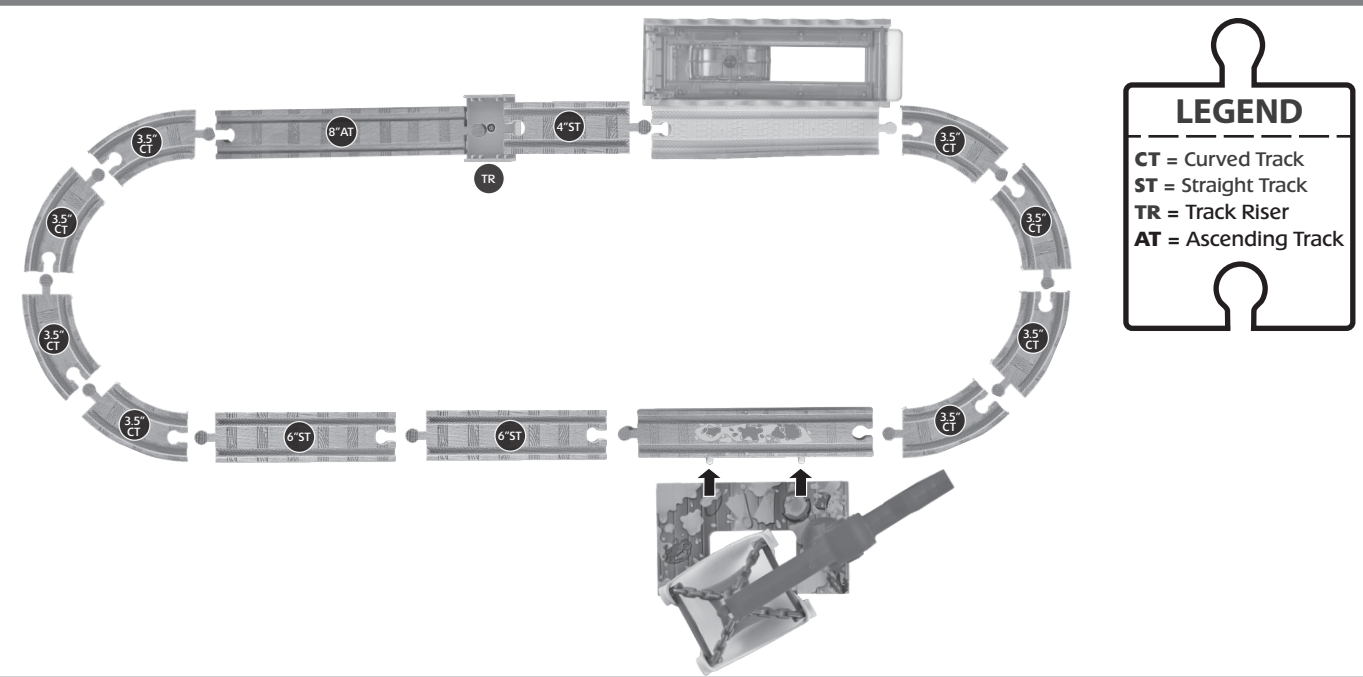
ASSEMBLY



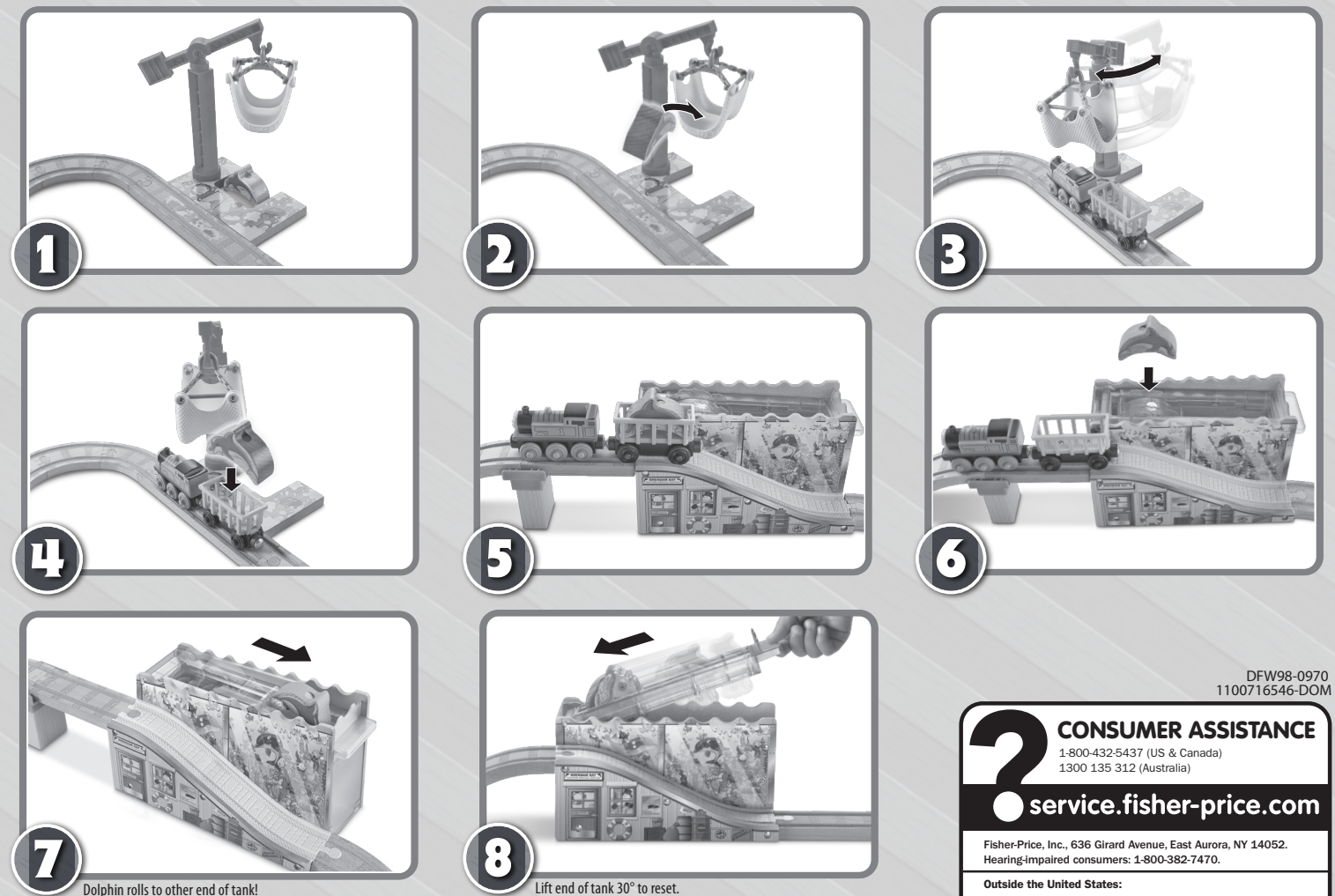
TROUBLESHOOTING



TRACK LAYOUT



HOW TO PLAY



Thomas the Tank Engine & Friends™
CREATED BY BRIAN ALLCROFT
Based on the Railway Series by The Reverend W. Awdry.
©2015 Gullane (Thomas) Limited. Thomas the Tank Engine & Friends and
Thomas & Friends are trademarks of Gullane (Thomas) Limited.
©2015 HIT Entertainment Limited. HIT and the HIT logo are trademarks of HIT Entertainment Limited.
©2015 Mattel. All Rights Reserved. "HIT" and "HIT logo" are trademarks of Mattel, except as noted.
PRINTED IN CHINA. Mattel East Asia Ltd., Room 503-09, North Tower, World Finance Centre,
Harbour City, Tsimshatsui, HK, China. Tel.: (852) 3185-6500.



DFW98
FisherPrice

DFW98-0970
1100716546-DOM

CONSUMER ASSISTANCE
1-800-432-5437 (US & Canada)
1300 135 312 (Australia)
service.fisher-price.com

Outside the United States:
Canada: Mattel Canada Inc., 6155 Freemont Blvd.,
Mississauga, Ontario L5R 3W2; www.service.mattel.com.
Great Britain: Mattel UK Ltd, Vanwall Business Park,
Maidenhead SL6 4UB. Helpline: 01628 500303.
www.service.mattel.com/uk
Mattel Europa B.V., Gondel 1, 1186 MJ Amstelveen, Nederland.
Australia: Mattel Australia Pty. Ltd., 658 Church Street,
Locked Bag #870, Richmond, Victoria 3121 Australia.
New Zealand: 16-18 William Pickering Drive,
Albany 1331, Auckland.

Item No : DFW98-0970-1100716546
Version : DOM
Size : 8.27" x 11.69" (A4)
Paper : 100% Recycled paper 70 gsm
Color : Black
Date : 8/25/2015(Wall Huang)