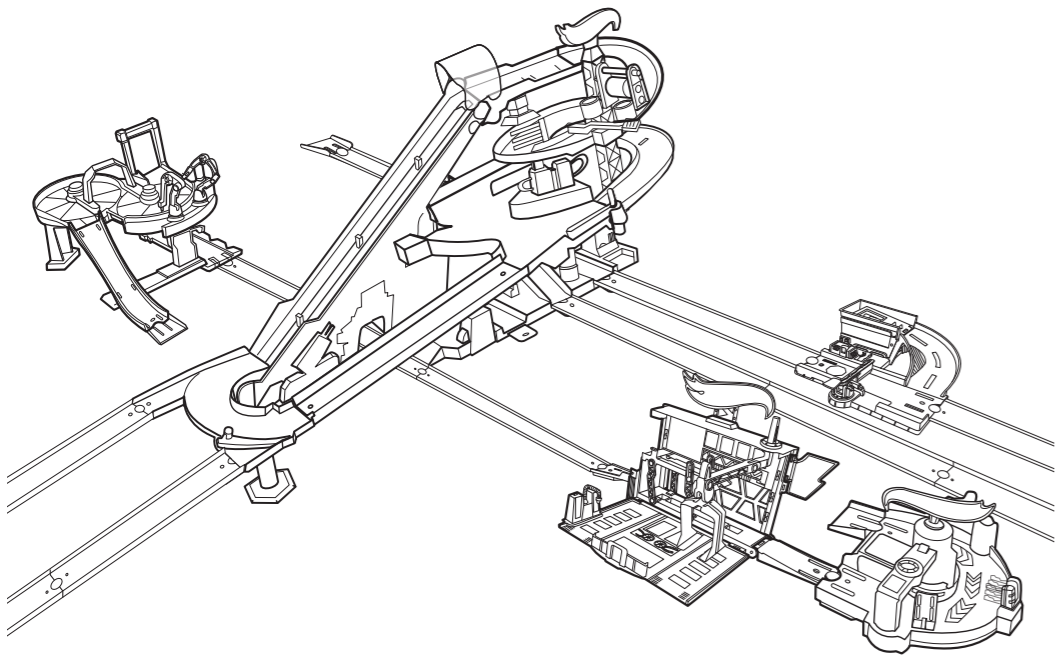




# ULTRA METROPOLIS



5+

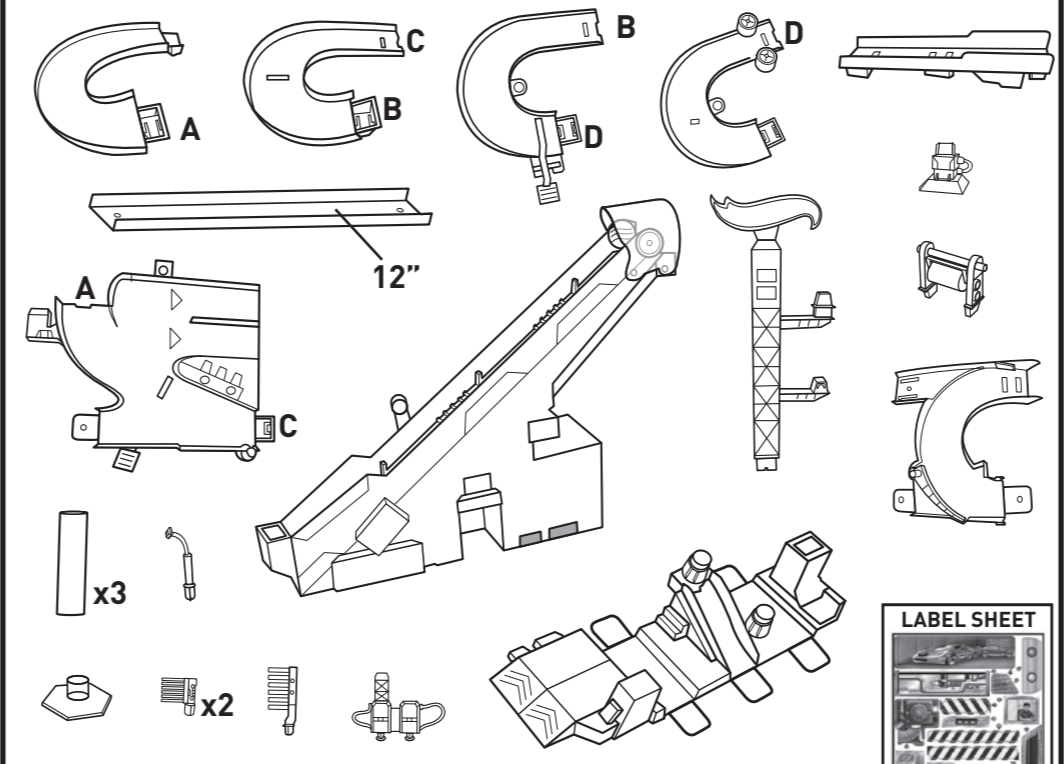
service.mattel.com  
**HOTWHEELS.COM**

**WARNING:**  
CHOKING HAZARD - Small parts.  
Not for children under 3 years.

**MATTEL**  
DHC02-0970  
1100599565-DOM

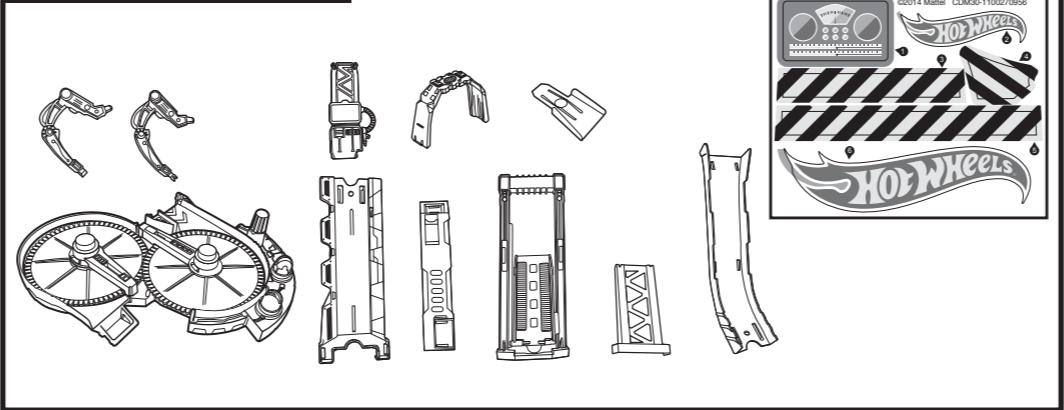
PLEASE KEEP THESE INSTRUCTIONS FOR FUTURE REFERENCE AS THEY CONTAIN IMPORTANT INFORMATION.

## MOTORIZED MEGA GARAGE

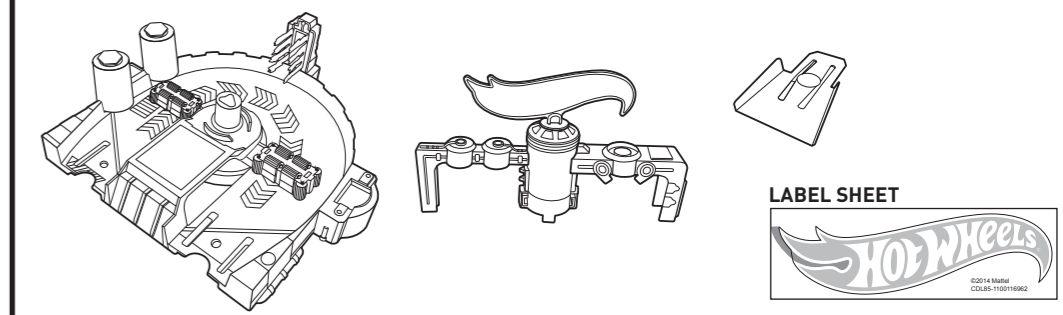


REQUIRES 2 "D" SIZE (LR20) ALKALINE BATTERIES (NOT INCLUDED).  
DISPOSE OF BATTERIES SAFELY.

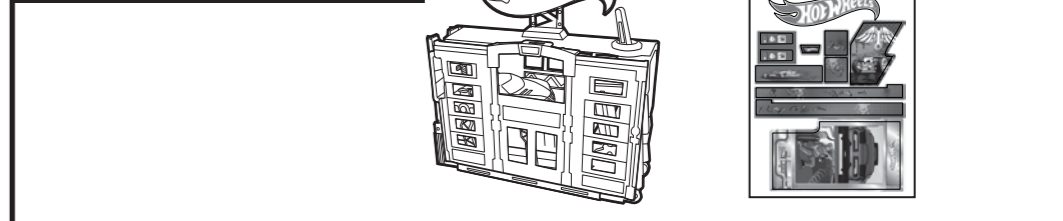
## CAR FACTORY



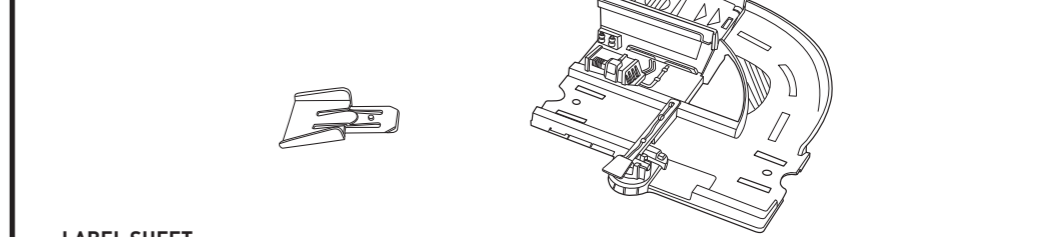
## CLEAN RIDE CAR WASH™



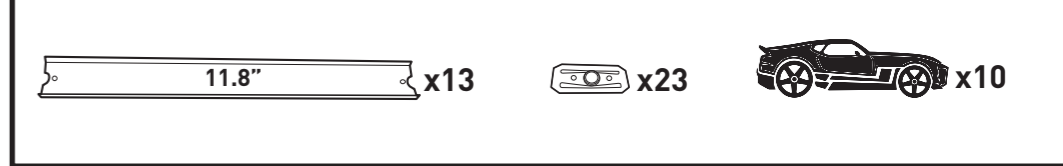
## POWER LIFT™ GARAGE



## TOLLBOOTH TAKEDOWN™

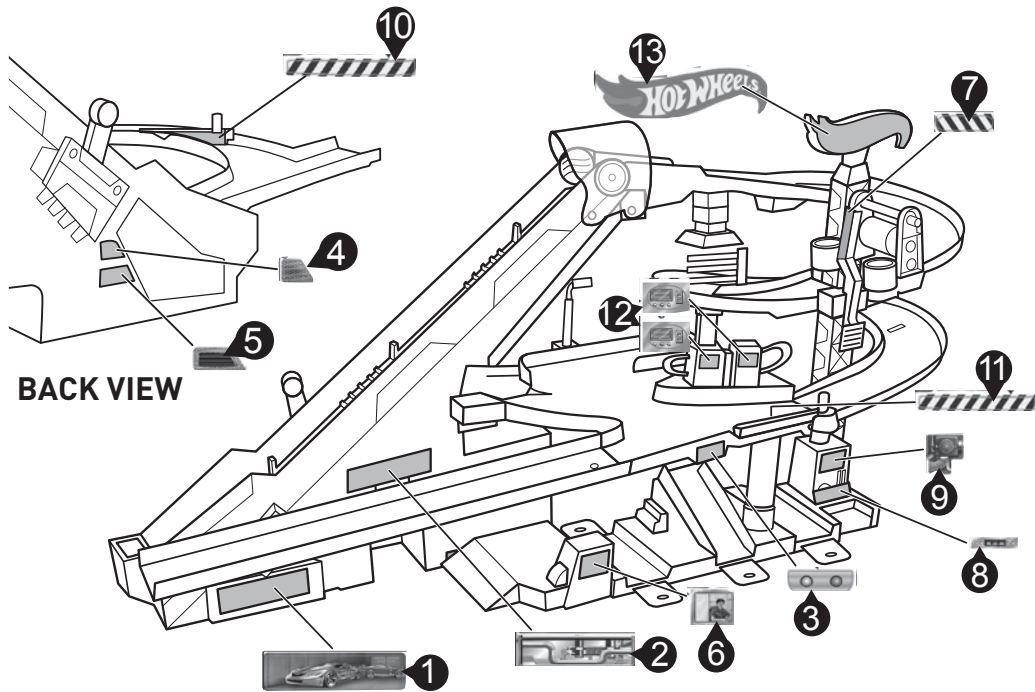


## ACCESSORIES

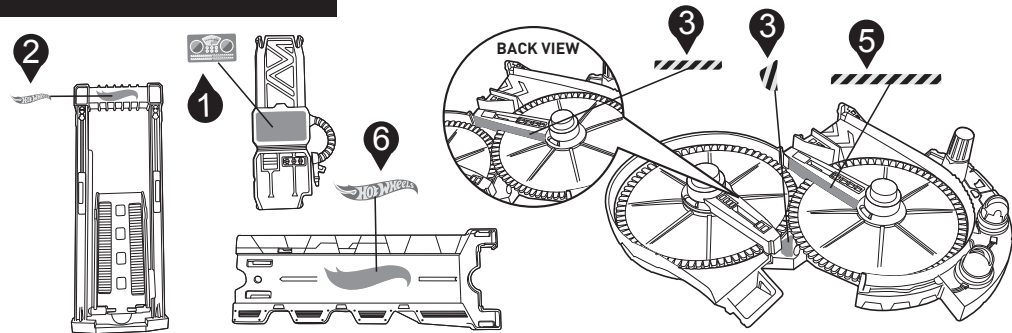


# APPLY LABELS

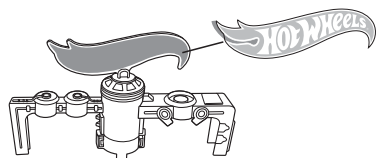
## MOTORIZED MEGA GARAGE



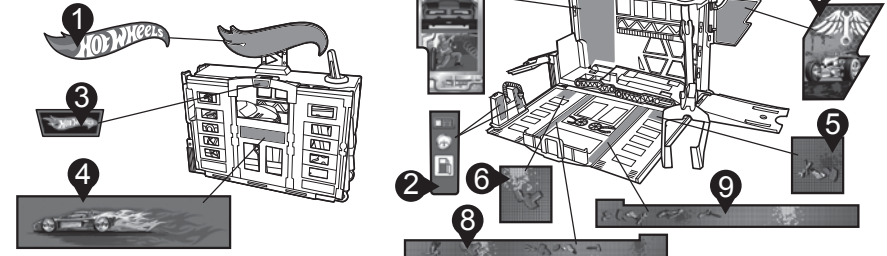
## CAR FACTORY



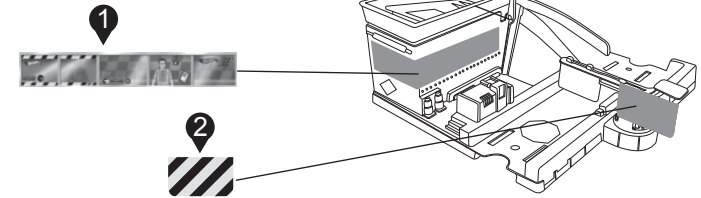
## CLEAN RIDE CAR WASH™



## POWER LIFT™ GARAGE

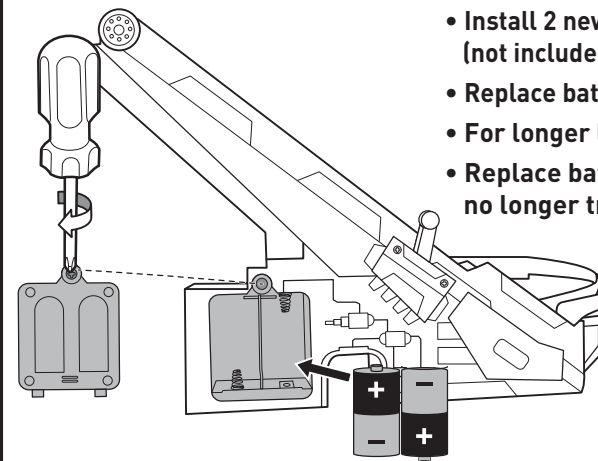


## TOLLBOOTH TAKEDOWN™



## BATTERY INSTALLATION

### MOTORIZED MEGA GARAGE

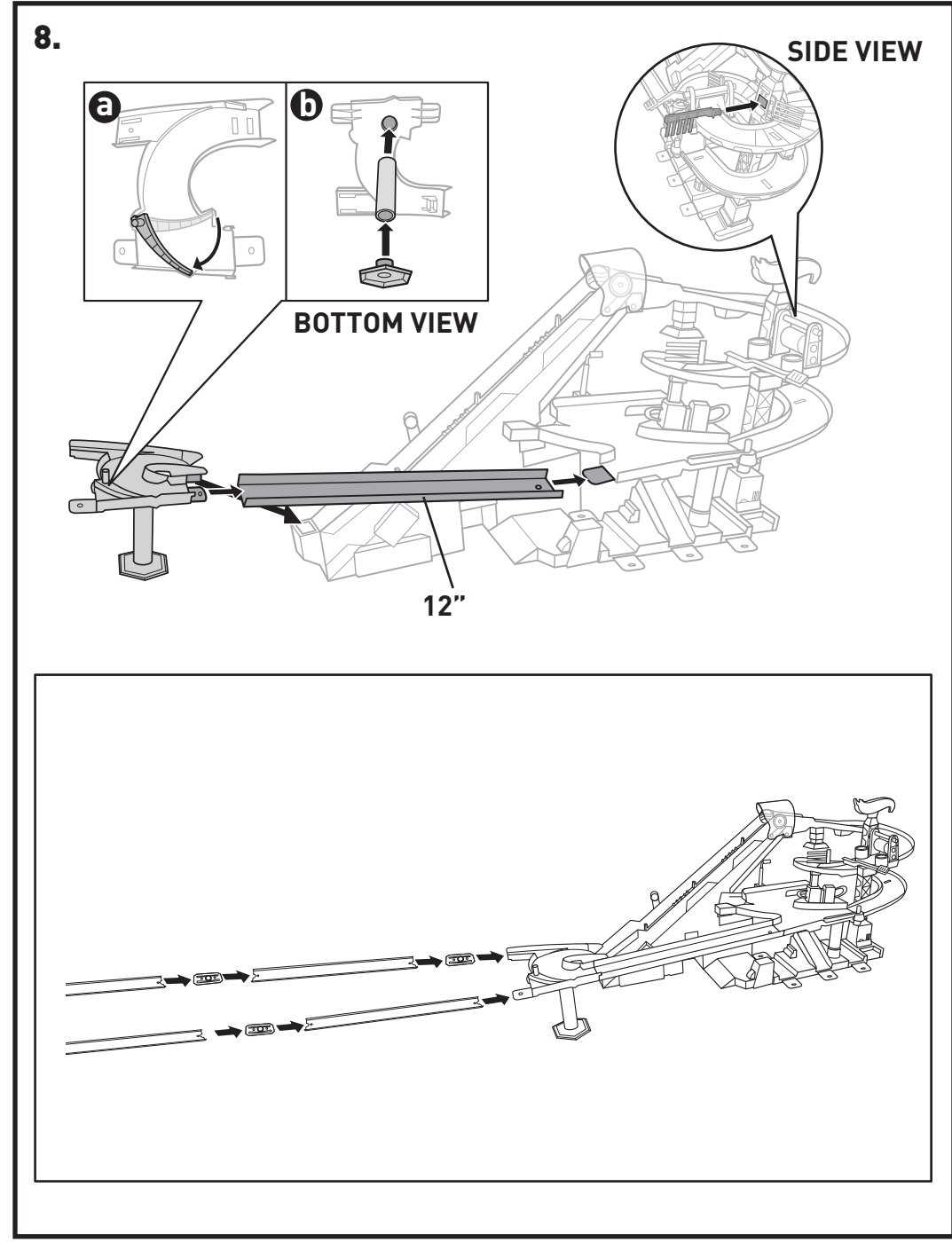
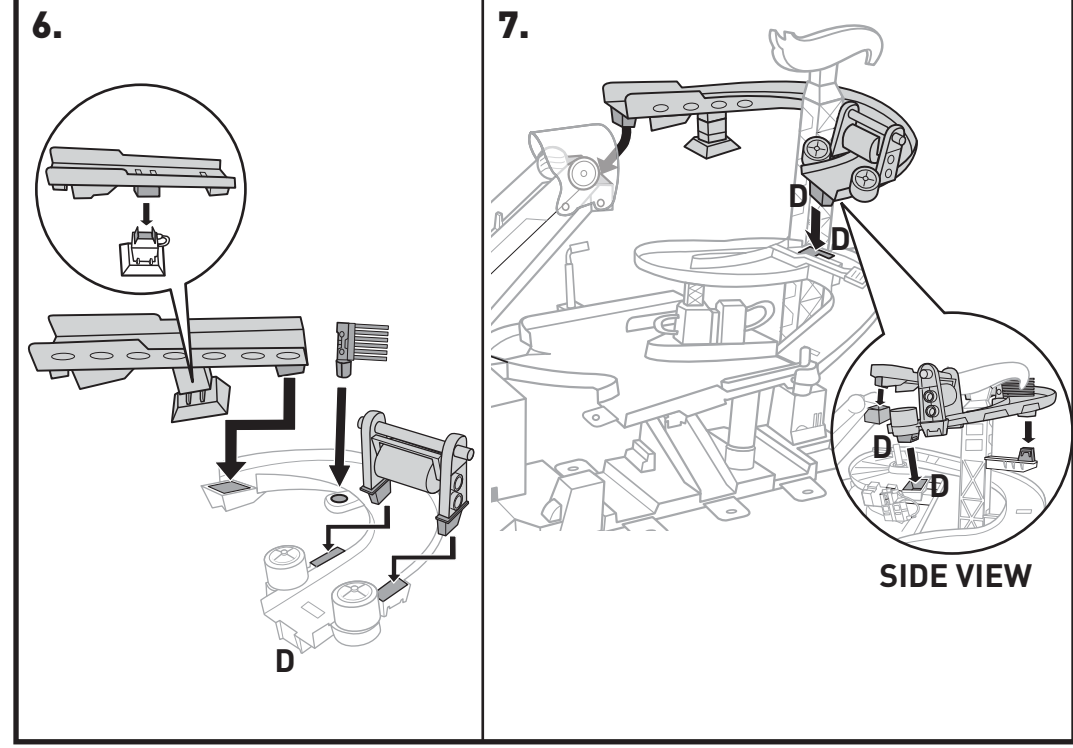
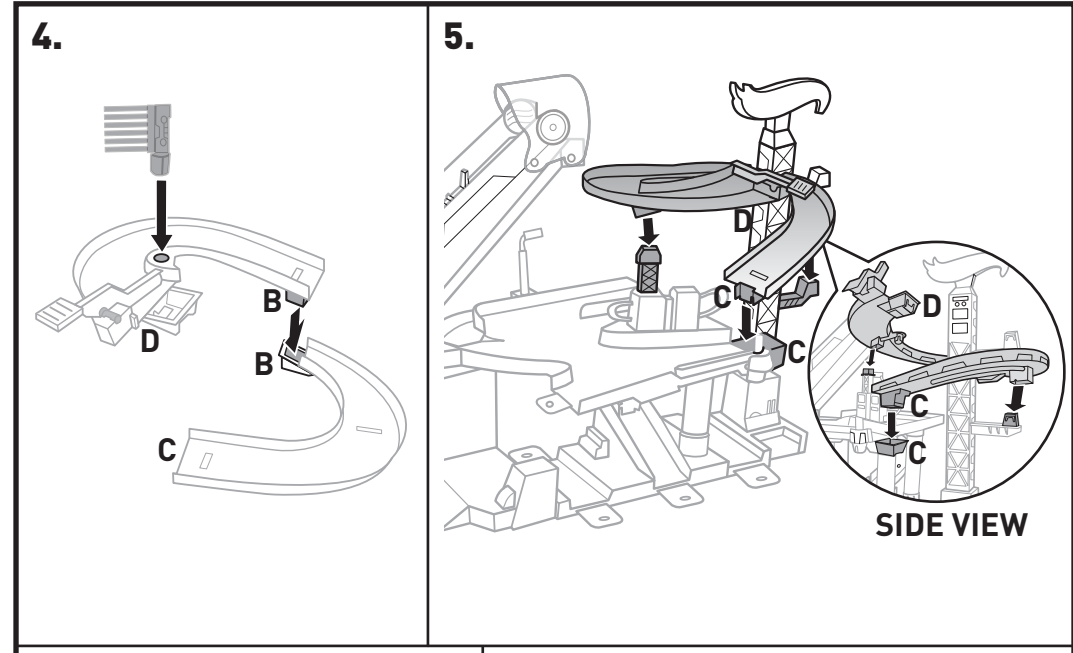
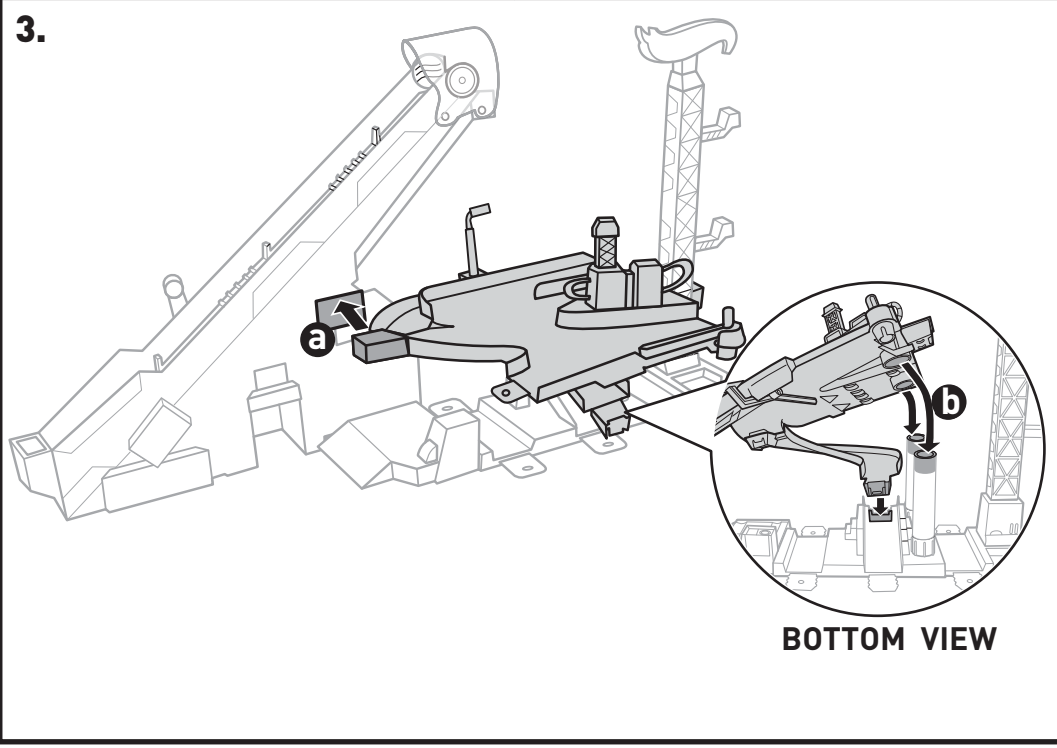
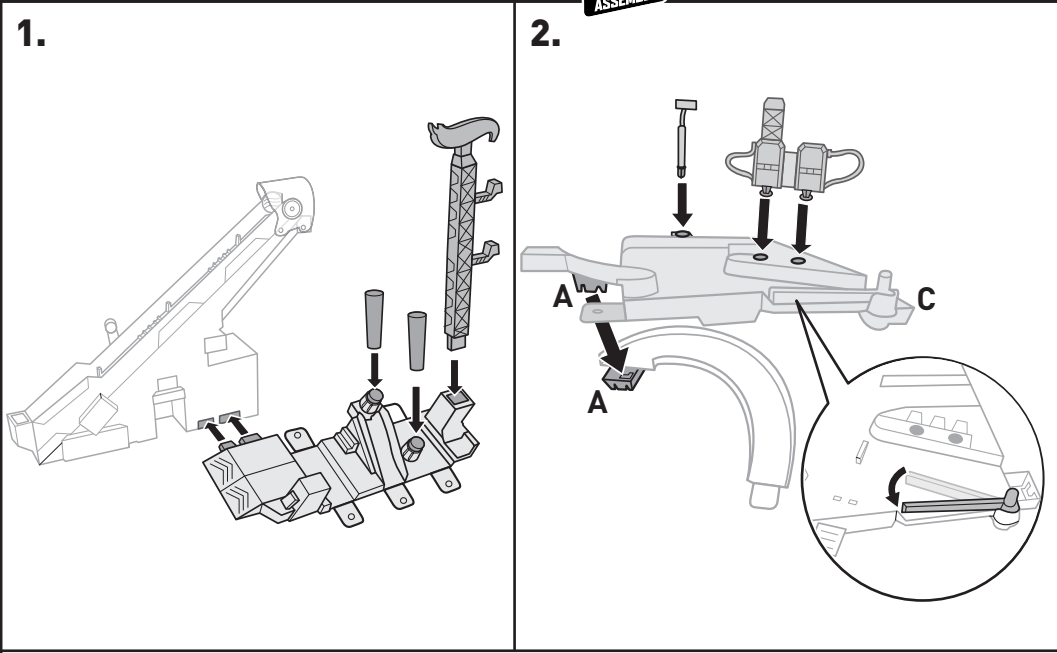


- Unscrew the battery cover with a Phillips head screwdriver (not included).
- Install 2 new "D" size (LR20) alkaline batteries (not included) in the orientation (+/-) shown.
- Replace battery cover and tighten screw.
- For longer life use alkaline batteries.
- Replace batteries when the conveyor belt can no longer transport cars to the top of the set.

# ASSEMBLE SECTION 1

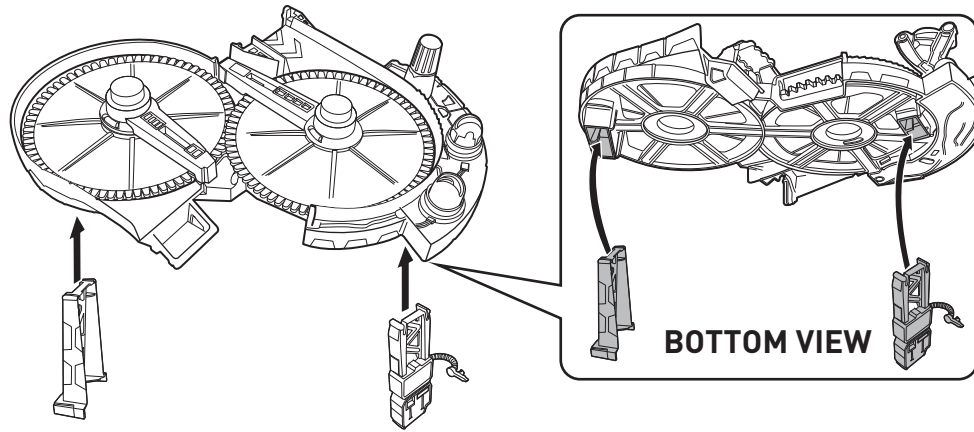


Refer to letter on toy parts and contents page to help with assembly.

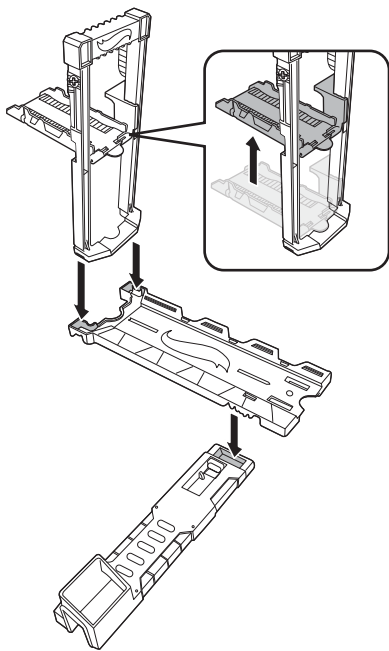


# ASSEMBLE SECTION 2

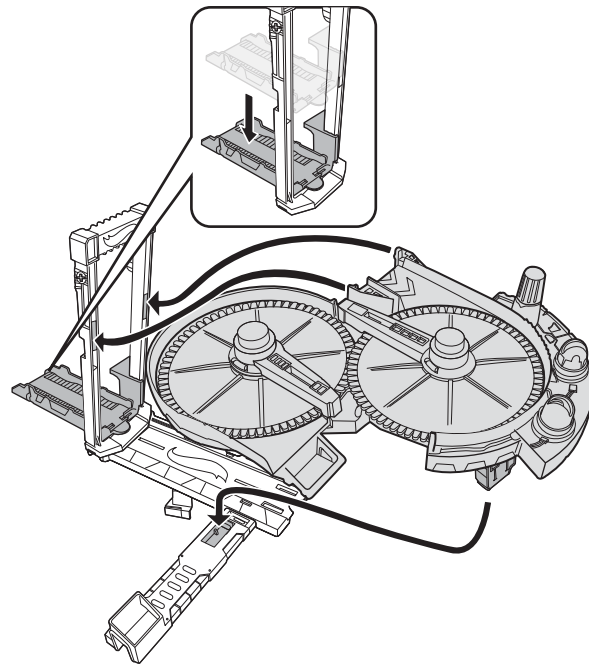
1.



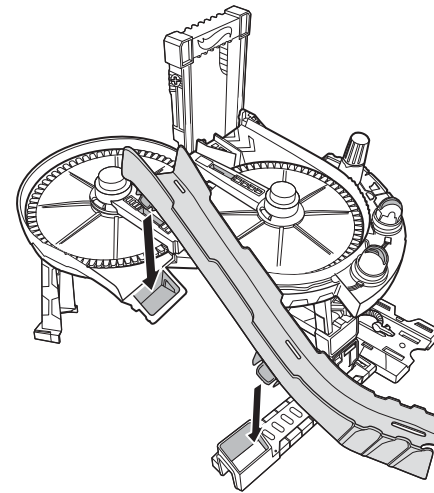
2.



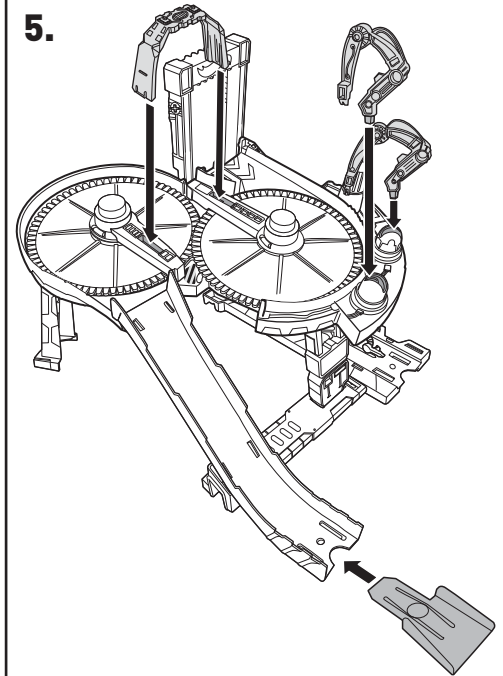
3.



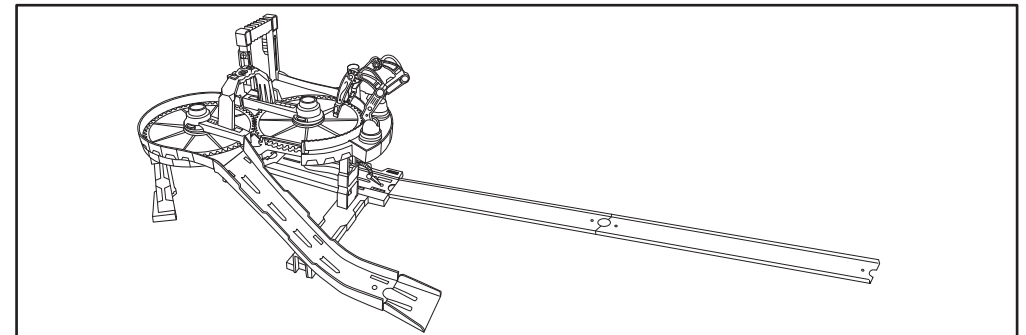
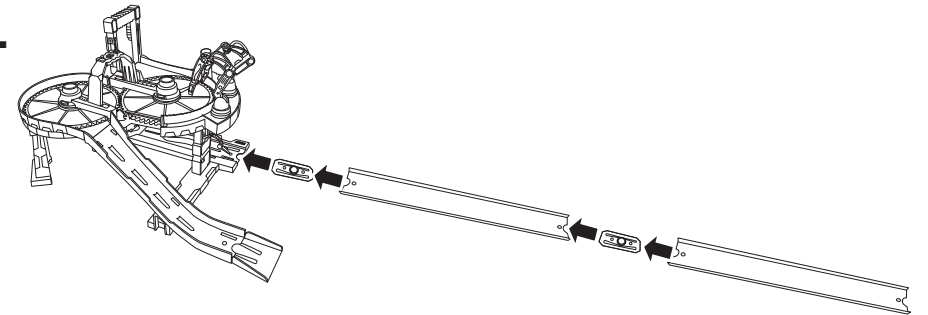
4.



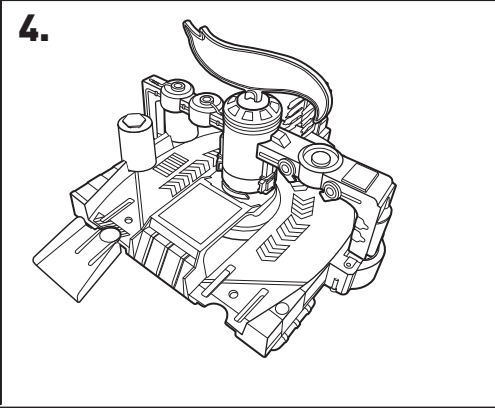
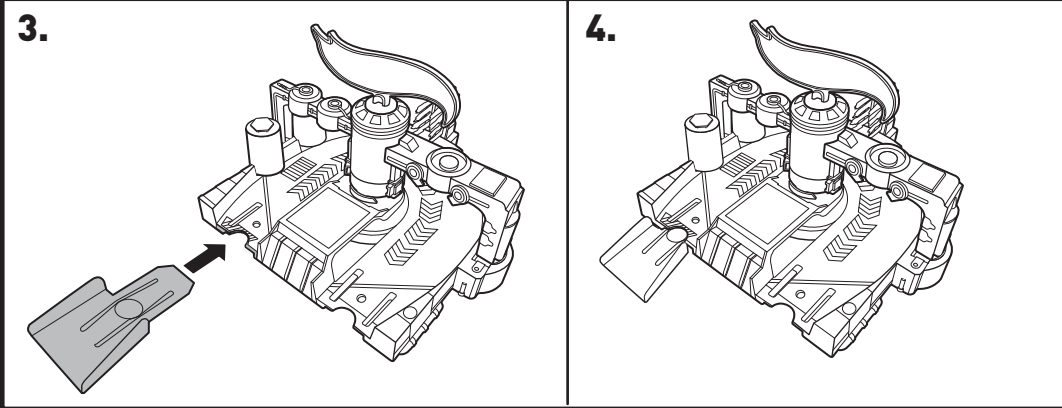
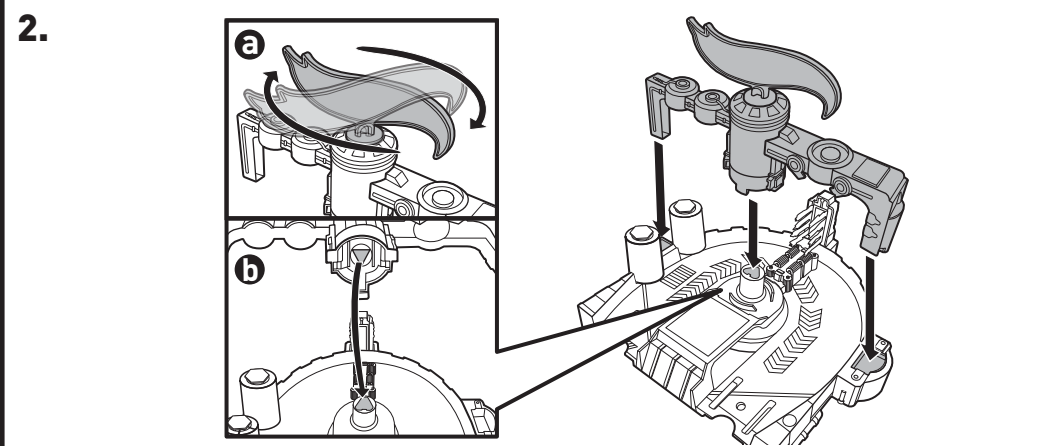
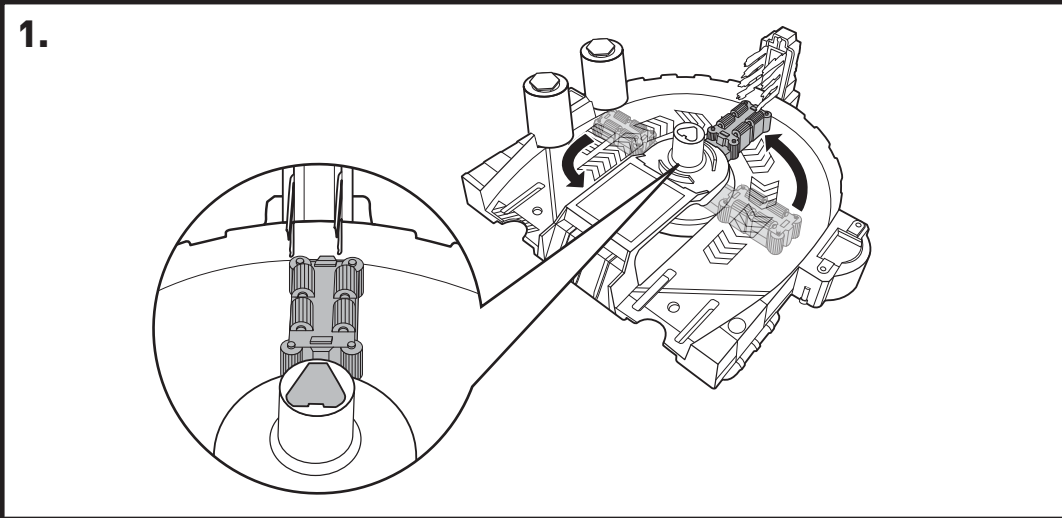
5.



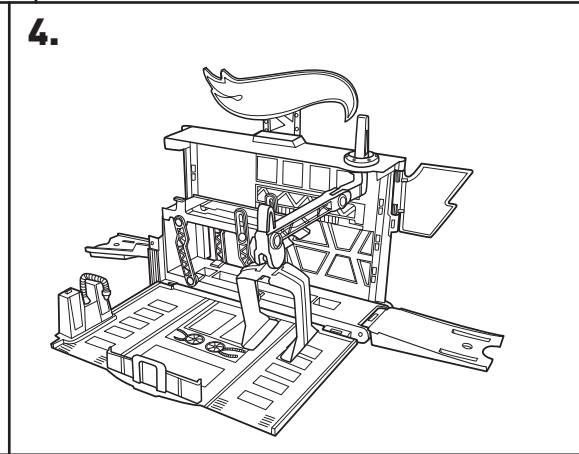
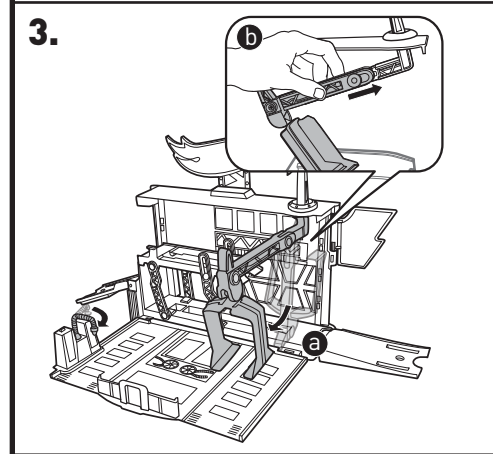
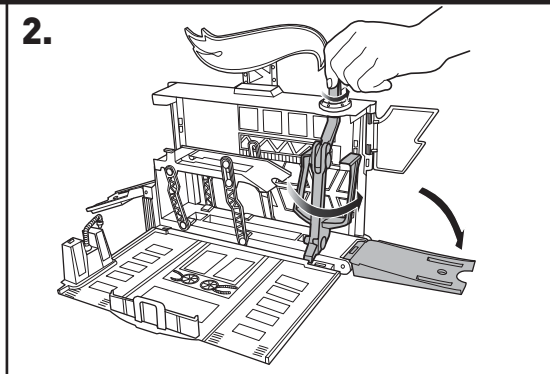
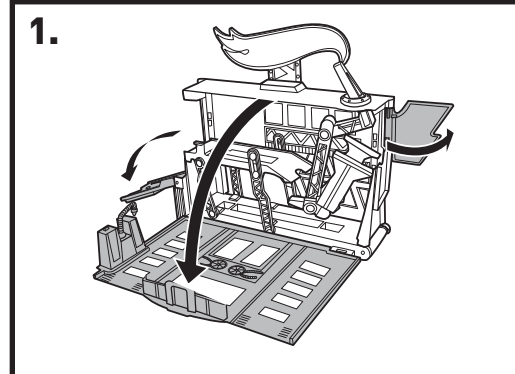
6.



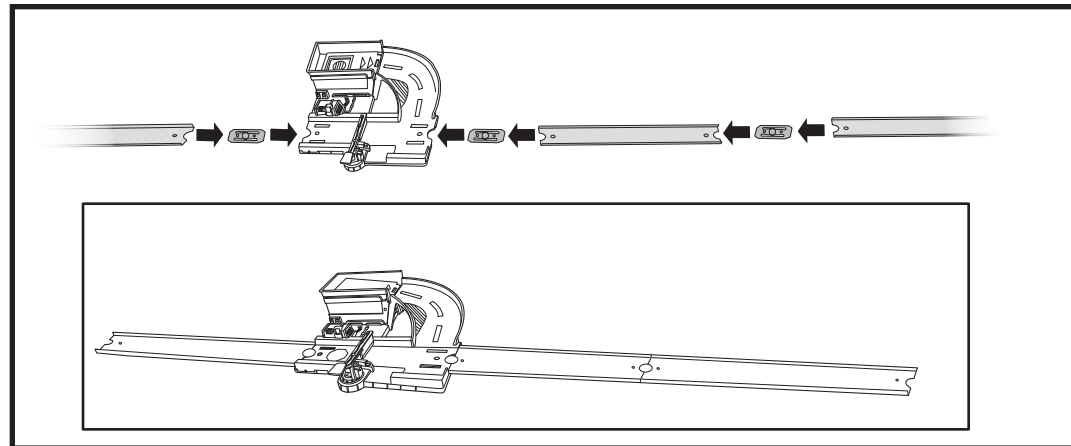
# ASSEMBLE SECTION 3

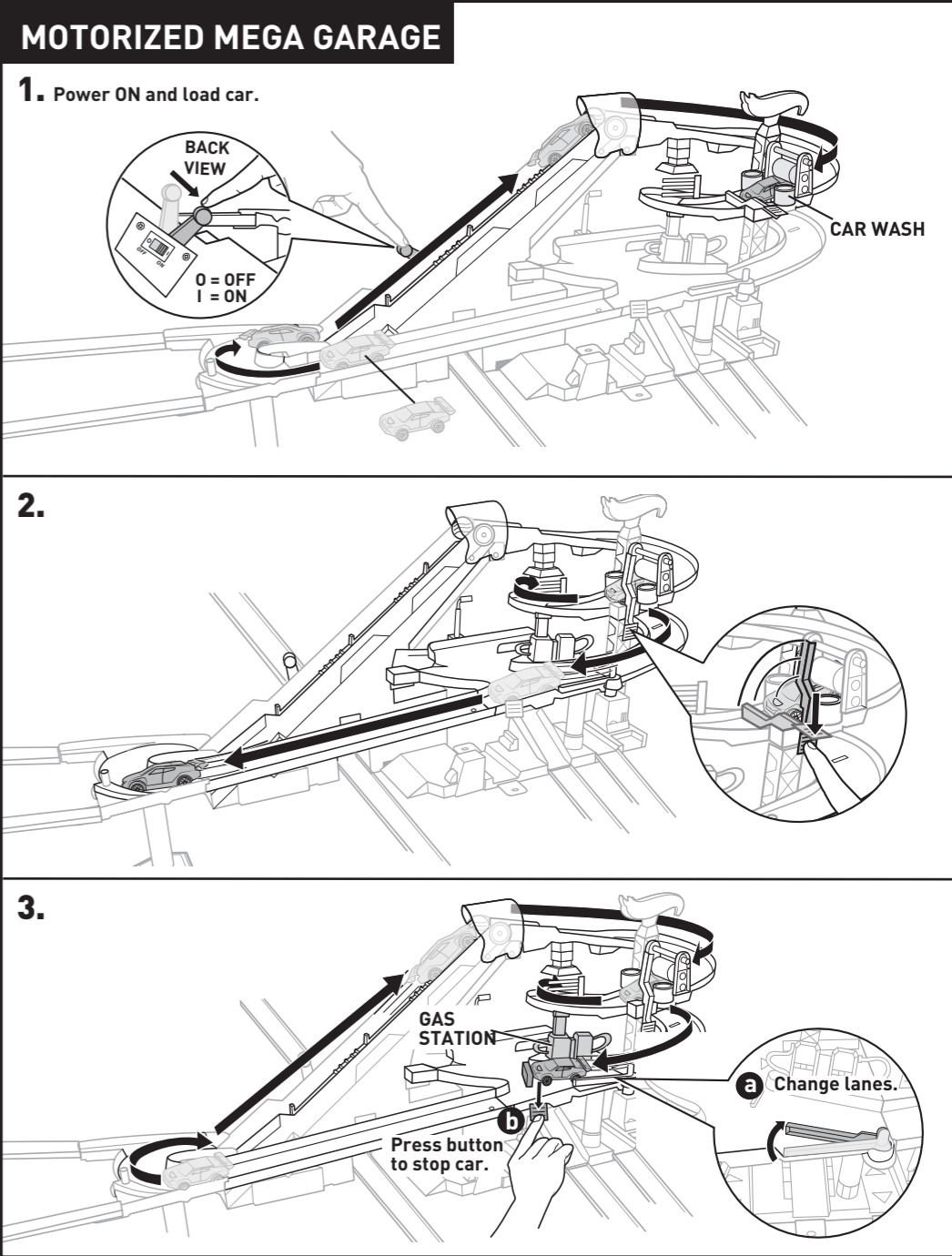
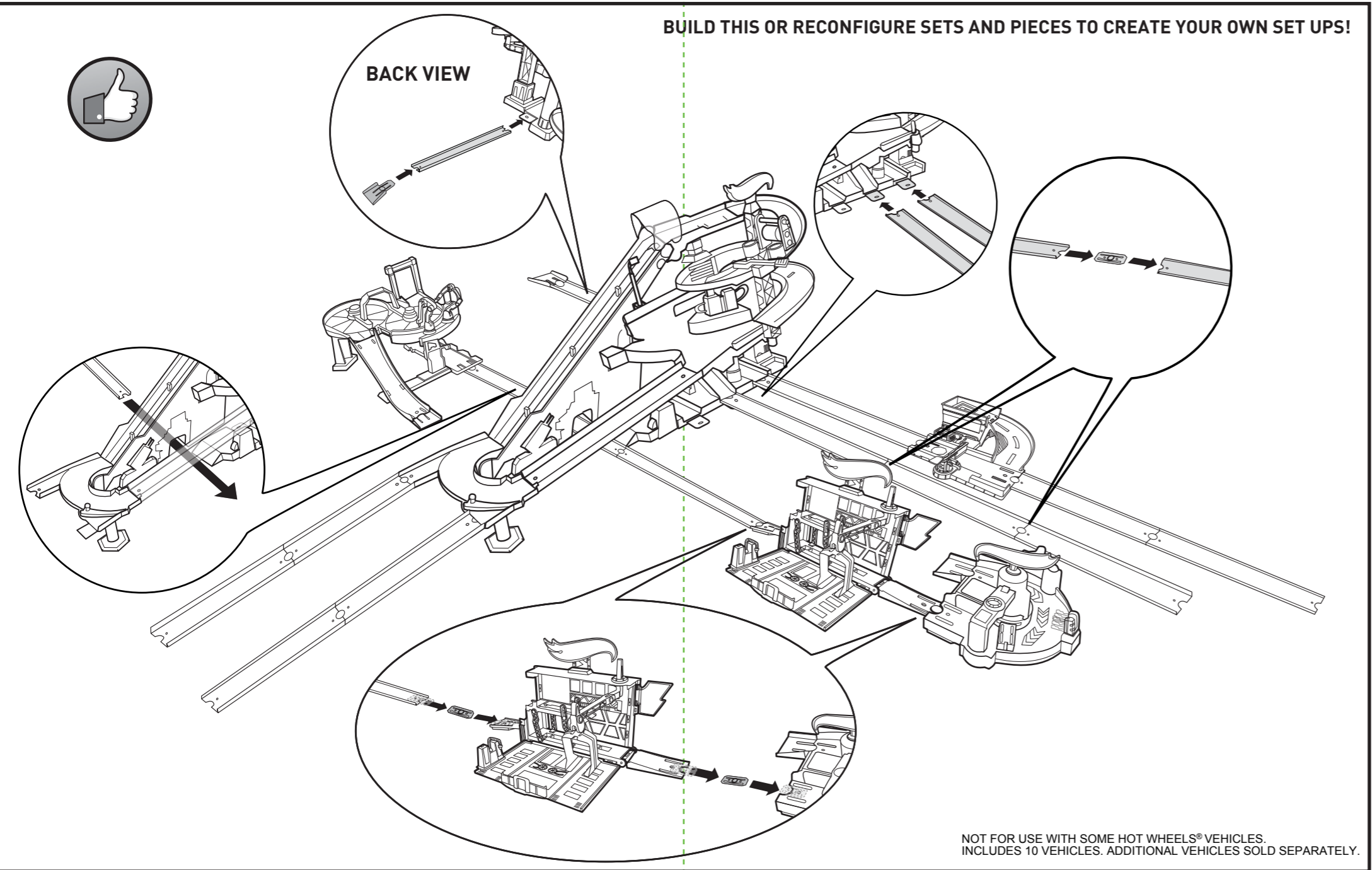


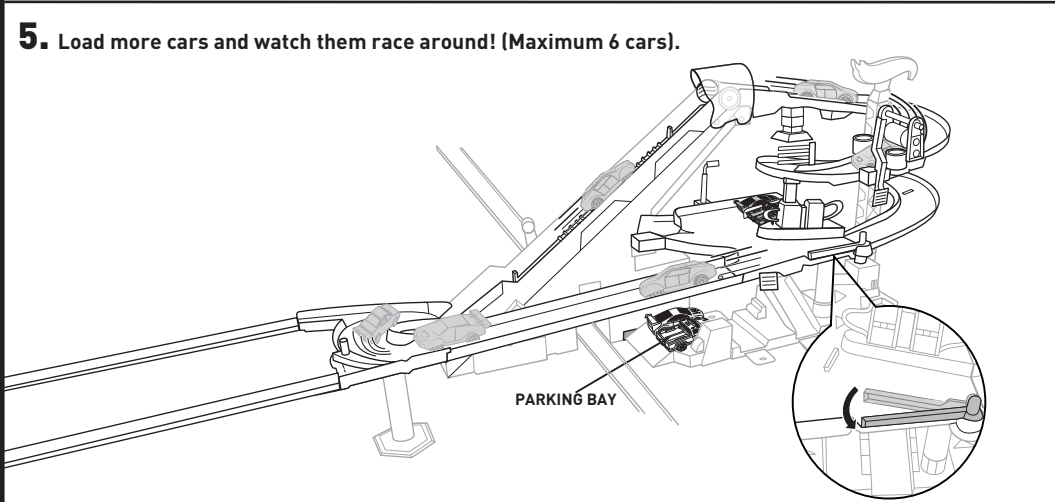
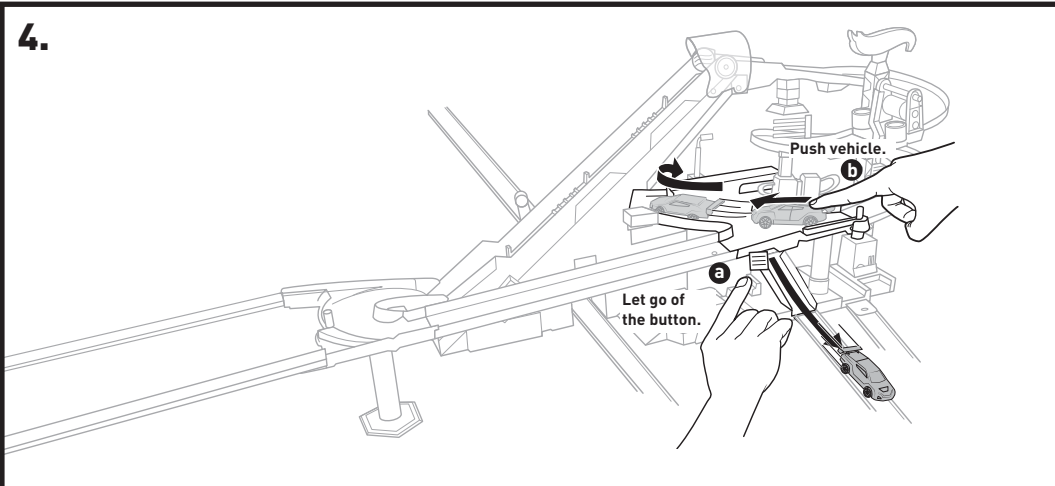
# ASSEMBLE SECTION 4



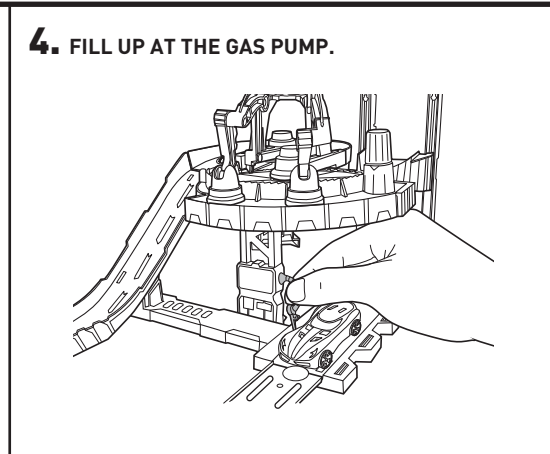
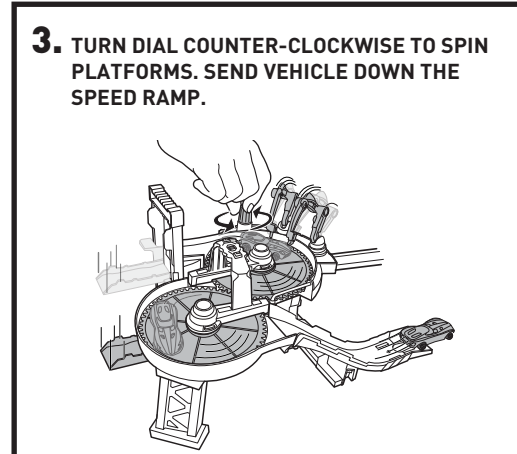
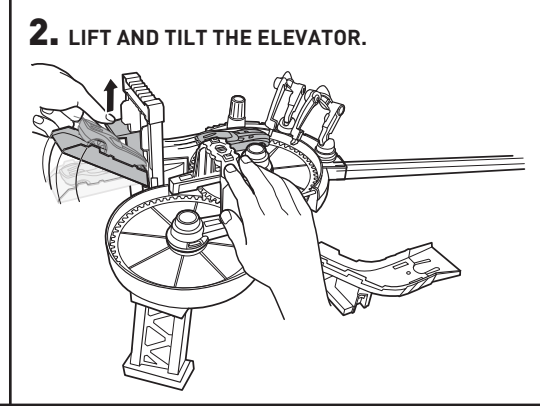
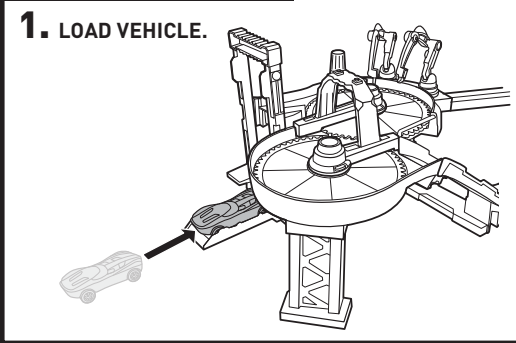
# ASSEMBLE SECTION 5



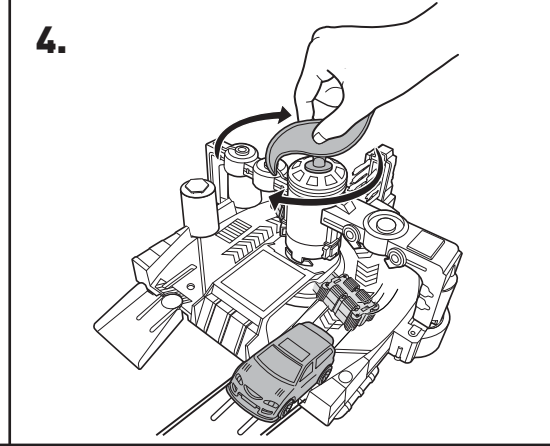
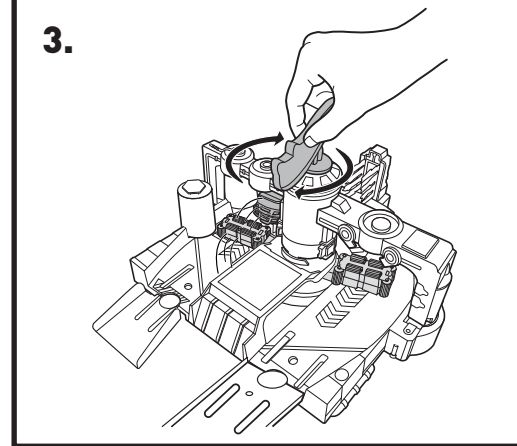
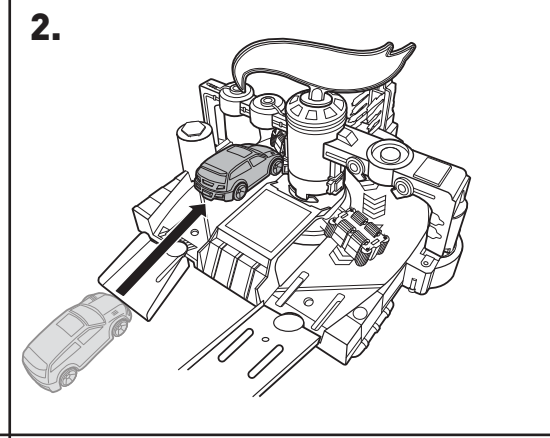
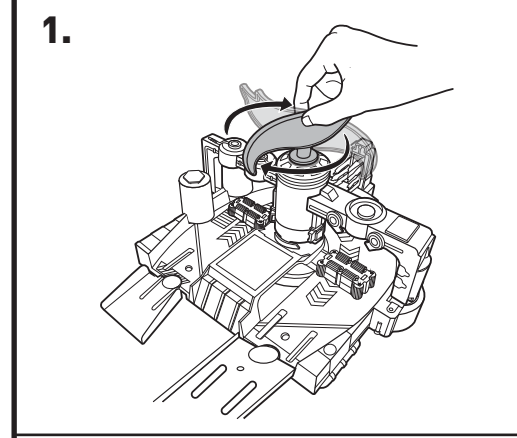




**CAR FACTORY**

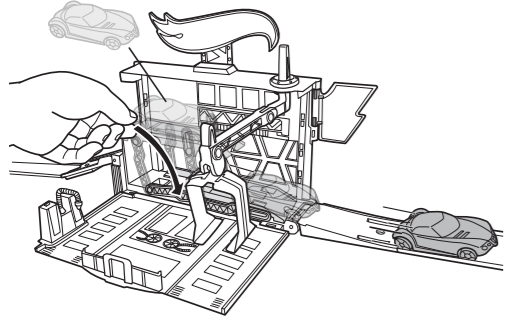


**CLEAN RIDE CAR WASH™**

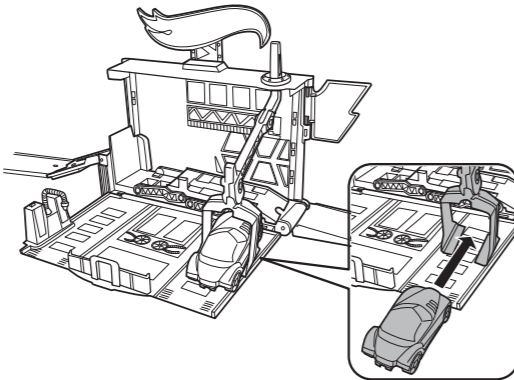


## POWER LIFT™ GARAGE

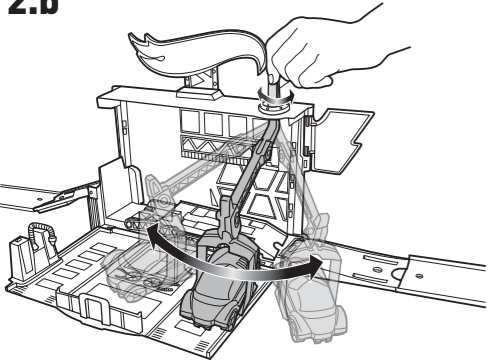
1.



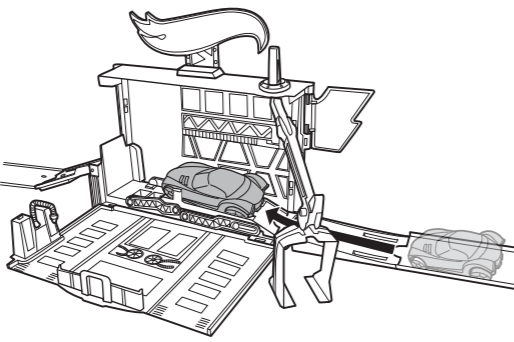
2.a



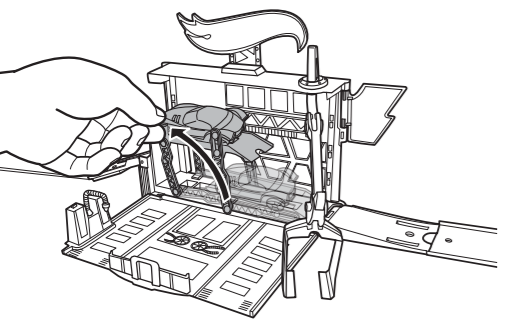
2.b



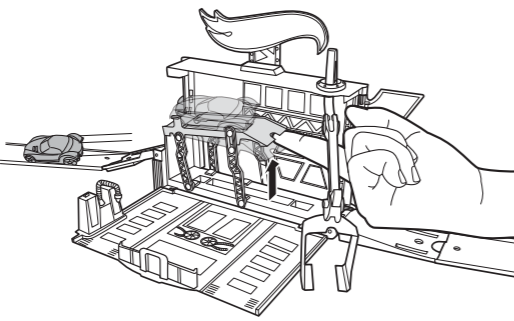
3.a



3.b

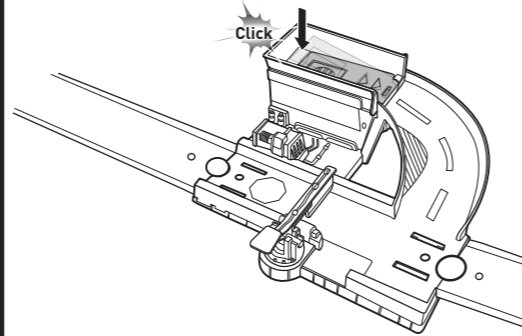


3.c

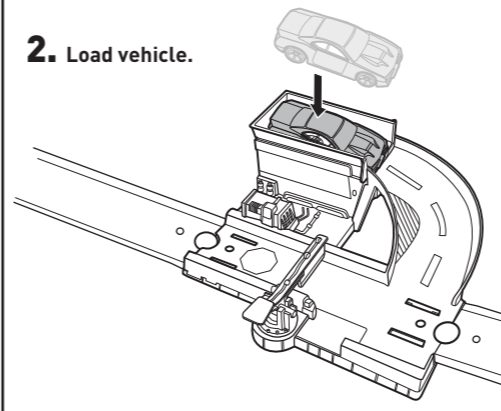


## TOLLBOOTH TAKEDOWN™

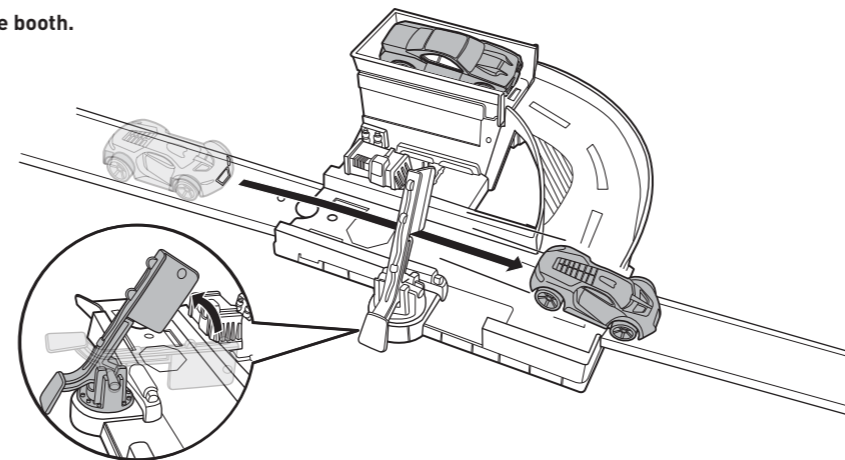
1. Push and lock platform down.



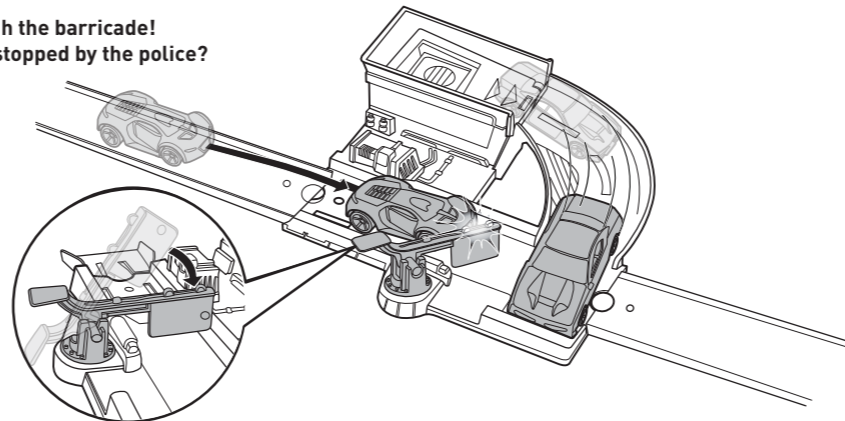
2. Load vehicle.



3. Drive past the booth.



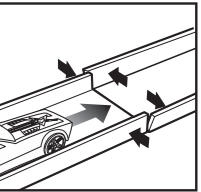
4. Crash through the barricade!  
Will you get stopped by the police?



## PERFORMANCE TIPS

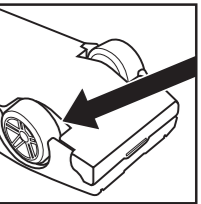
Q. My car keeps crashing on the track for no reason. What is the problem?

A. Clear all obstructions on the track. Adjust track side walls at each connection point.



Q. My car keeps slowing down by itself on the tracks.

A. Lint may collect around your car's axles. This may cause the car to run slowly. Use tweezers or a toothpick to remove lint.



## BATTERY SAFETY INFORMATION

In exceptional circumstances batteries may leak fluids that can cause a chemical burn injury or ruin your product. To avoid battery leakage:

- Non-rechargeable batteries are not to be recharged.
- Rechargeable batteries are to be removed from the product before being charged.
- Rechargeable batteries are only to be charged under adult supervision.
- Do not mix alkaline, standard (carbon-zinc), or rechargeable (nickel-cadmium) batteries.
- Do not mix old and new batteries.
- Only batteries of the same or equivalent type as recommended are to be used.
- Batteries are to be inserted with the correct polarity.
- Exhausted batteries are to be removed from the product.
- The supply terminals are not to be short-circuited.
- Dispose of battery(ies) safely.
- Do not dispose of this product in a fire. The batteries inside may explode or leak.

Battery Performance Note:

For best performance use alkaline batteries. Battery life may vary depending on battery brand.



Protect the environment by not disposing of this product with household waste (2002/96/EC). Check your local authority for recycling advice and facilities.