



# Zip, Slide and Zoom Clubhouse

## INSTRUCTIONS

Keep these instructions for future reference as they contain important information.

### ASSEMBLY PARTS

NOTE: Before you begin, lay out the pieces as shown.

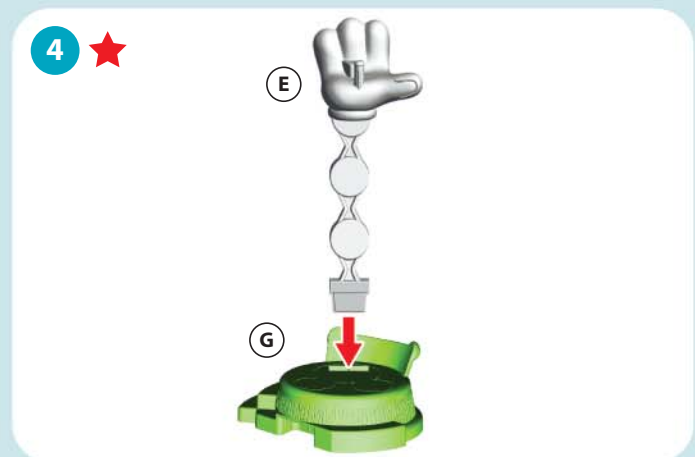
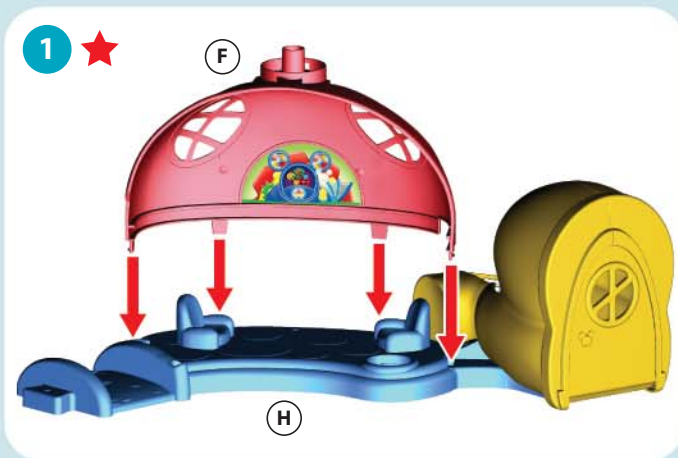


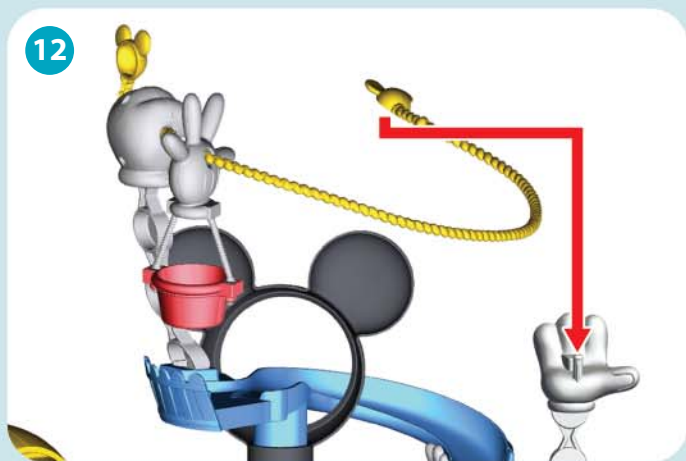
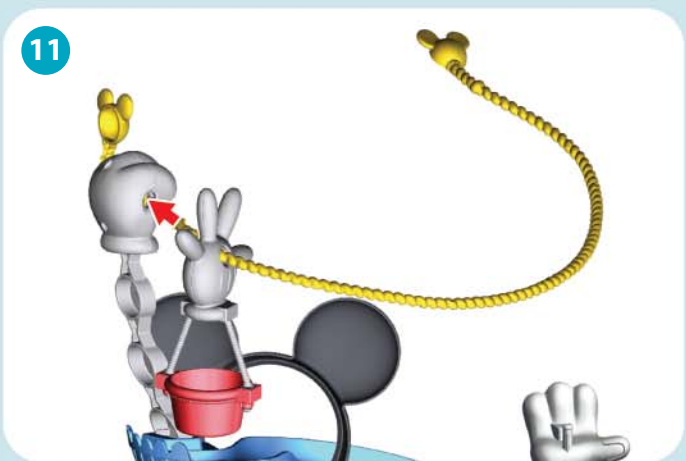
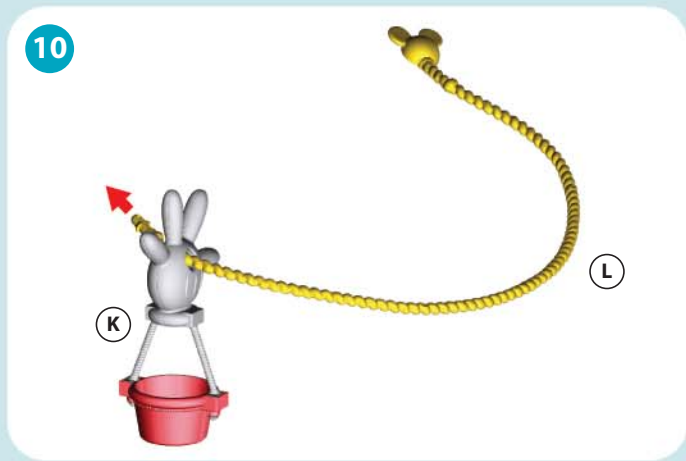
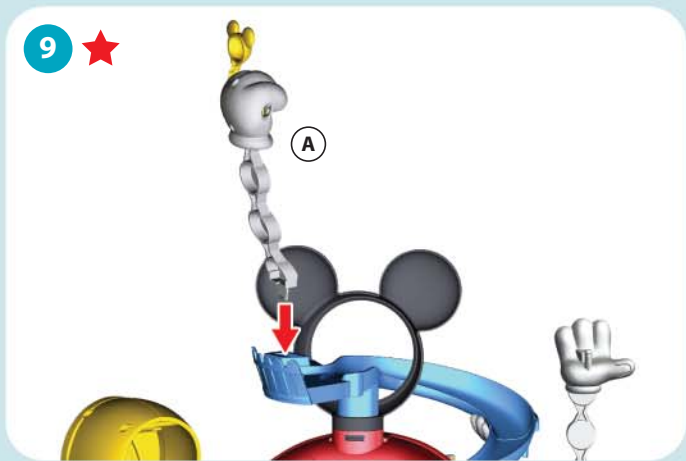
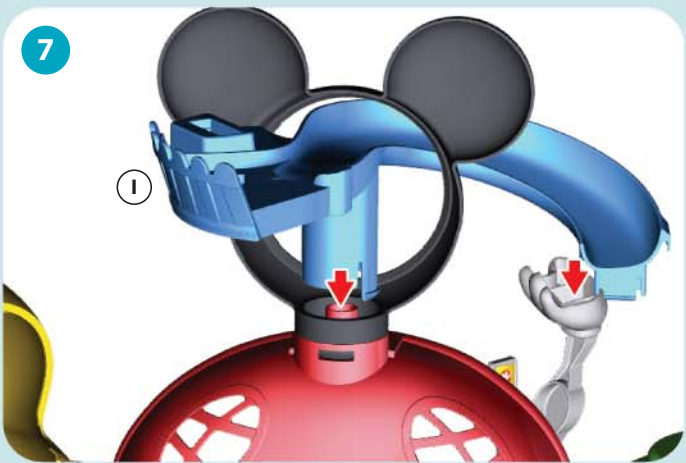
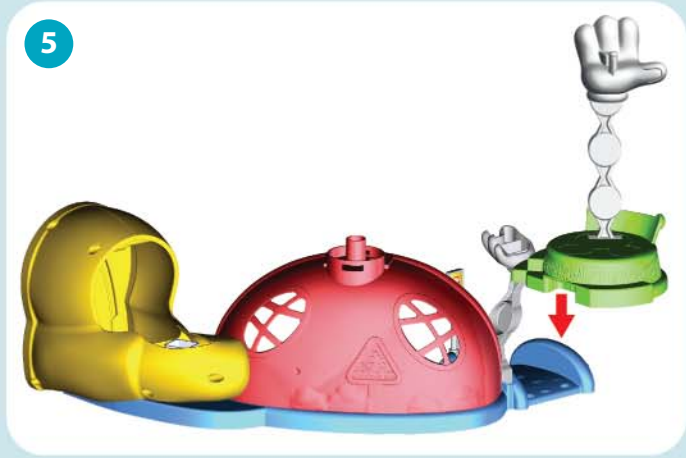
## LABEL PLACEMENT



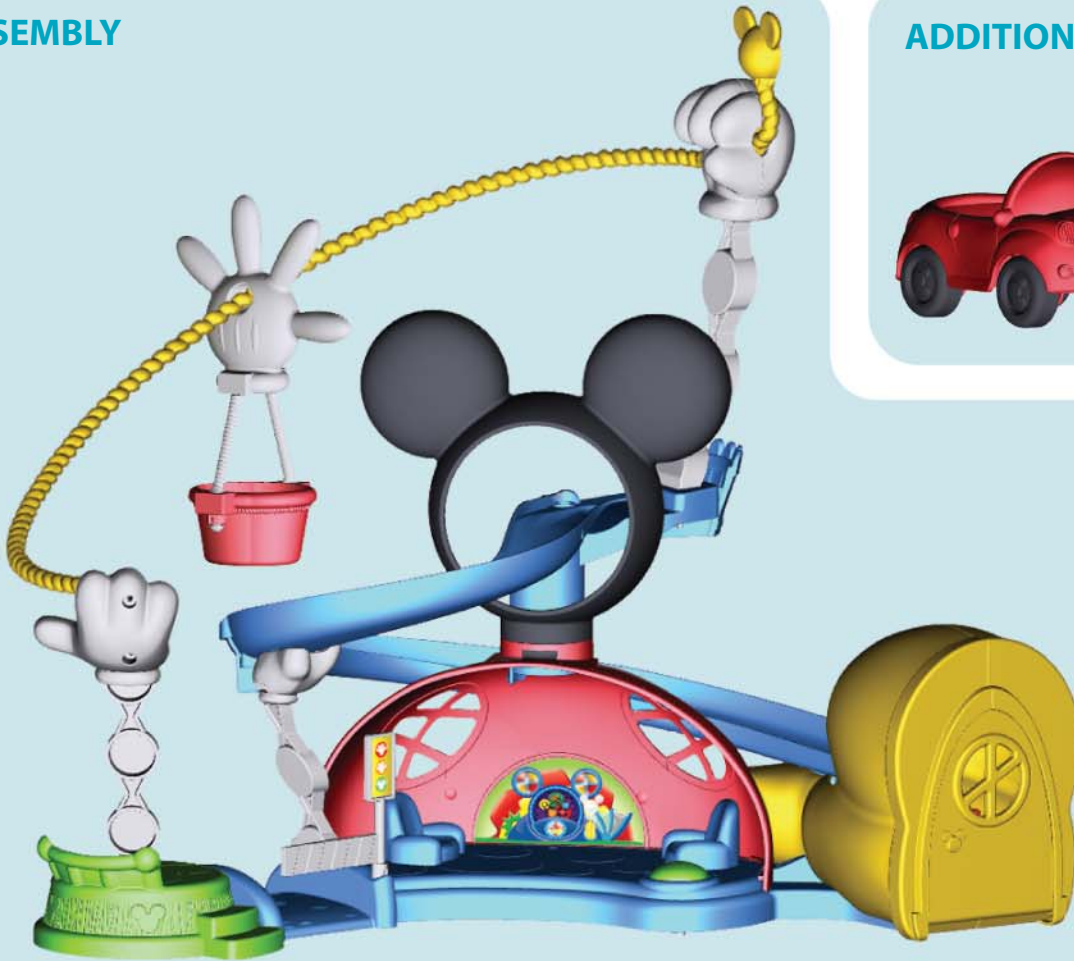
## ASSEMBLY

★ **NOTE:** Assembly steps that are marked with a star are “one-time snaps”. Press firmly until each part clicks into place. Once these parts are put together, they cannot be taken apart.





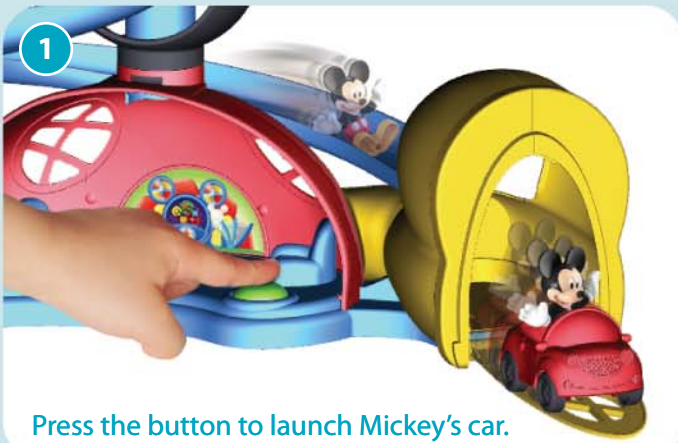
## ASSEMBLY



## ADDITIONAL PLAY PIECES



## HOW TO PLAY



Press the button to launch Mickey's car.



Press the Mickey ears to release the balloon down the zip-line.

**CONSUMER ASSISTANCE**  
 1-800-432-5437 (US & Canada)  
 1300 135 312 (Australia)  
**service.fisher-price.com**

Fisher-Price, Inc., 636 Girard Avenue, East Aurora, NY 14052.  
 Hearing-impaired consumers: 1-800-382-7470.

### Outside the United States:

Canada: Mattel Canada Inc., 6155 Freemont Blvd.,  
 Mississauga, Ontario L5R 3W2; www.service.mattel.com.

Great Britain: Mattel UK Ltd, Vanwall Business Park,  
 Maidenhead SL6 4UB. Helpline: 01628 500303.  
 www.service.mattel.com/uk

Mattel Europa B.V., Gondeel 1, 1186 MJ Amstelveen, Nederland.

Australia: Mattel Australia Pty. Ltd., 658 Church Street,  
 Locked Bag #870, Richmond, Victoria 3121 Australia.

New Zealand: 16-18 William Pickering Drive,  
 Albany 1331, Auckland.

© Disney

Visit DisneyJunior.com

©2016 Mattel. All Rights Reserved.

® and ™ designate U.S. trademarks of Mattel, except as noted.

**PRINTED IN CHINA.**

Mattel East Asia Ltd., Room 503-09, North Tower,  
 World Finance Centre, Harbour City, Tsimshatsui, HK, China.

Tel.: (852) 3185-6500.

DMC67-0970-G1  
 1100853608-DOM

DMC67

**Fisher-Price®**