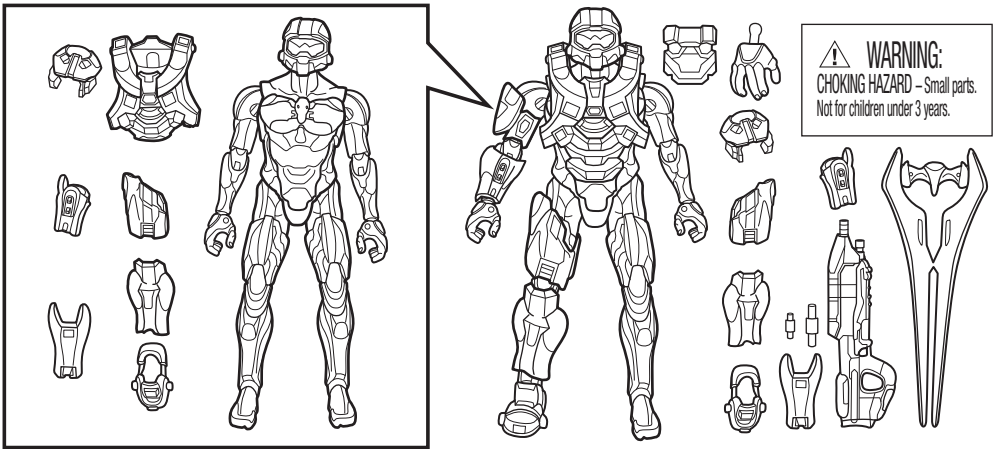


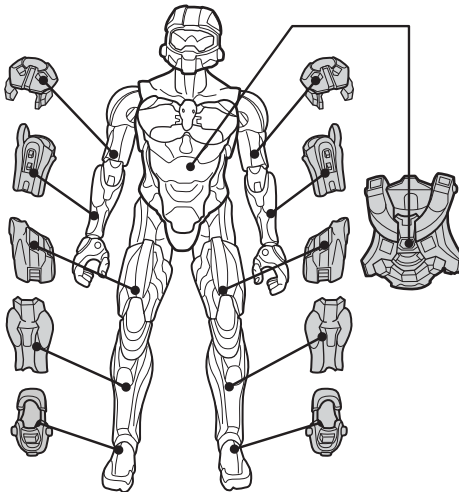
INSTRUCTIONS

Please keep these instructions for future reference as they contain important information.

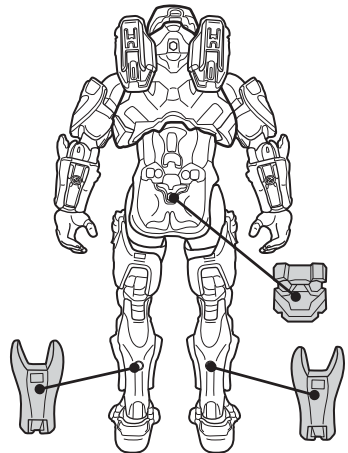
1 CONTENTS



2 ATTACHING ARMOR



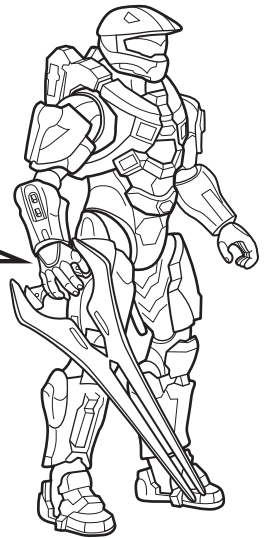
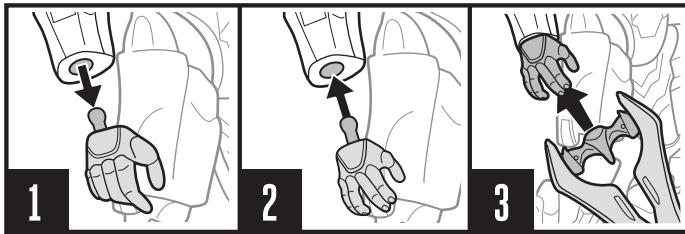
BACK VIEW



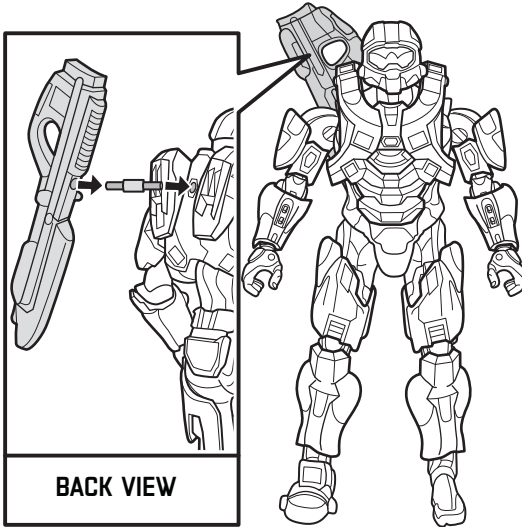
3

SWORD & ACCESSORY STORAGE

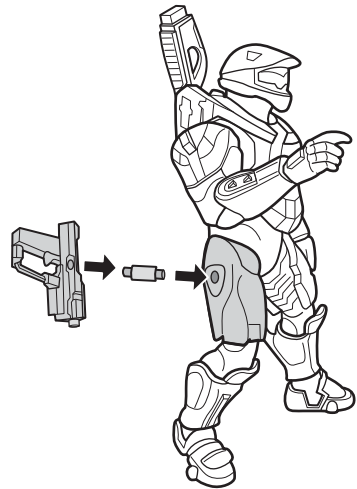
A. swap out hands to hold Energy sword.



B1. Use the long pin to attach primary accessory to figure's back.



B2. Use the short pin to attach secondary accessory to figure's hip armor.



MAGNUM accessory not included.

©2016 Mattel. All Rights Reserved. © and ™ designate U.S. trademarks of Mattel, except as noted. Mattel, Inc., 636 Girard Avenue, East Aurora, NY 14052, U.S.A. Consumer Relations 1-800-524-8697. Mattel U.K. Ltd., Vanwall Business Park, Maidenhead SL6 4UB. Helpline 01628 500303. Mattel Australia Pty., Ltd., Richmond, Victoria, 3121. Consumer Advisory Service - 1300 135 312. Mattel East Asia Ltd., Room 503-09, North Tower, World Finance Centre, Harbour City, Tsimshatsui, HK, China. Diimport & Diedarkan Oleh: Mattel SEA Ptd Ltd.(993532-P) Lot 13.5, 13th Floor, Menara Lien Hoe, Persiaran Tropicana Golf Country Resort, 47410 PJ, Malaysia. Tel:03-78803817, Fax:03-78803867.



© 2016 Microsoft Corporation. All Rights Reserved. Microsoft, 343 Industries, the 343 Industries logo, Halo, the Halo logo are trademarks of the Microsoft group of companies.

Asst. DNT98
DNT99-0971
1100928488-Dom

