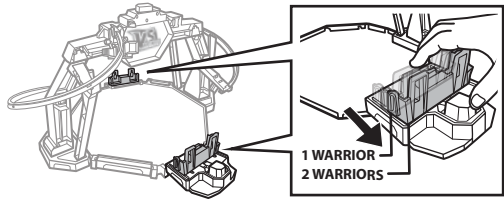
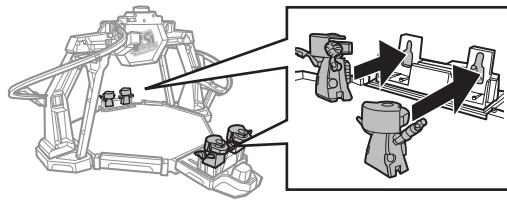


4 DOUBLE LAUNCH

A. 2-SPEED LAUNCHER: Pull launcher back to lock in place.

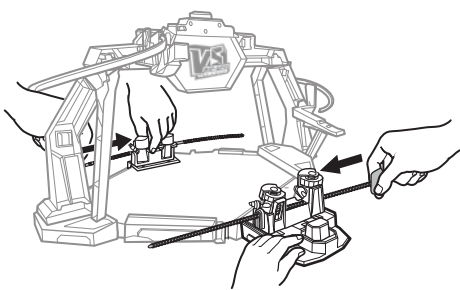


B. Load warriors onto the launchers.

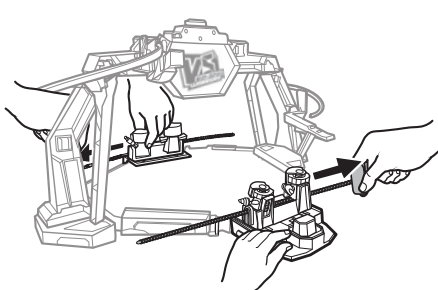


2 VS Rip-Spin Warriors™ included. Other warriors sold separately, subject to availability.

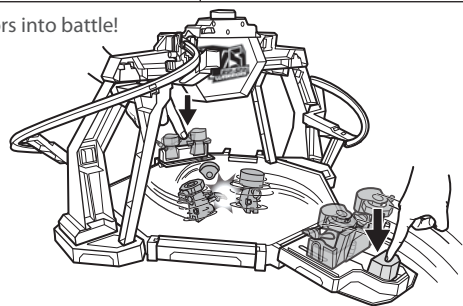
C. Insert ripcords from either side of the warriors.



D. Swiftly pull ripcords out to rev warriors!

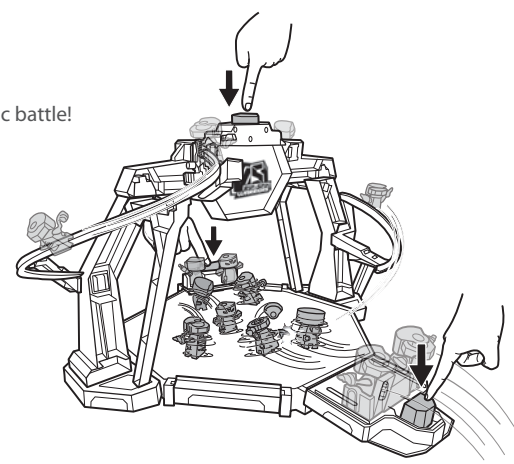


E. Press buttons to launch warriors into battle!



5 TO BATTLE

Launch together for an epic battle!



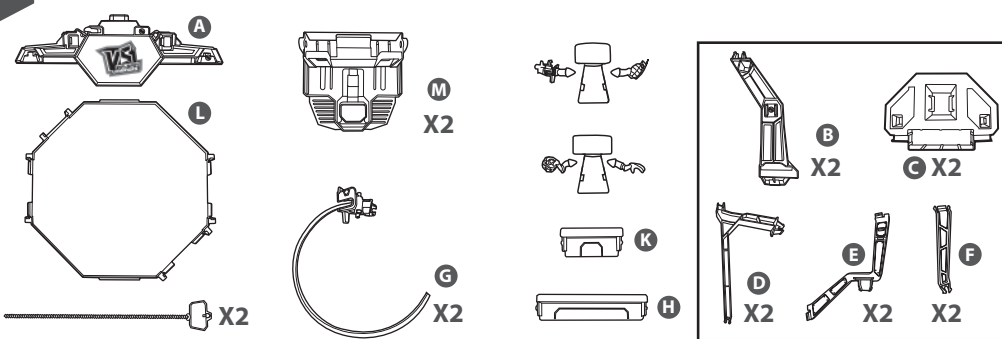
TWIN TORNADO™ ARENA INSTRUCTIONS

6+

Please keep these instructions for future reference as they contain important information.

WARNING: Do not aim at eyes or face. Only use projectiles supplied with this toy. Do not fire at point blank range.

1 CONTENTS

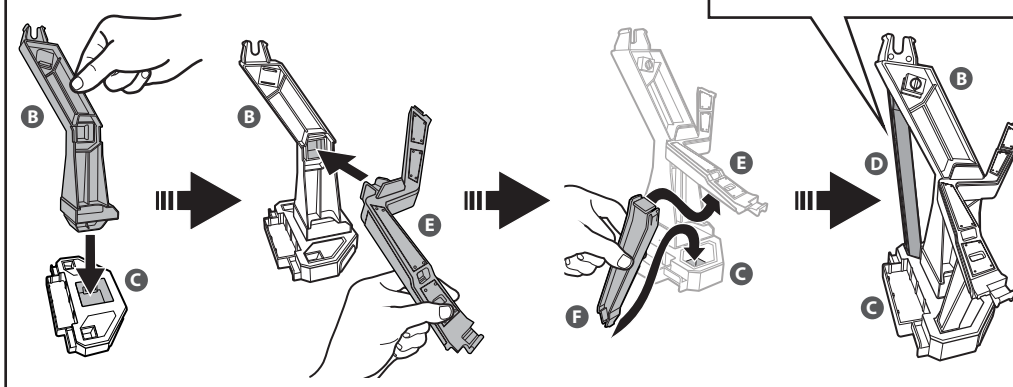


2 ASSEMBLY

A. Assemble the 2 side supports.

X2

BACK VIEW



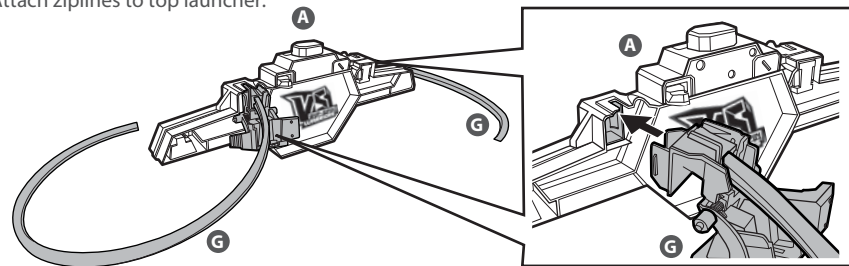
©2016 Mattel. All Rights Reserved. Mattel East Asia Ltd., Room 503-09, North Tower, World Finance Centre, Harbour City, Tsimshatsui, HK, China. Diimport & Diedarkan Oleh: Mattel SEA Ptd Ltd. (993532-P) Lot 13.5, Menara Lien Hoe, Persiaran Tropicana Golf Country Resort, 47410 PJ, Malaysia. Tel: 03-78803817, Fax: 03-78803867.

DRP13-0970G3
1100941386-DOM

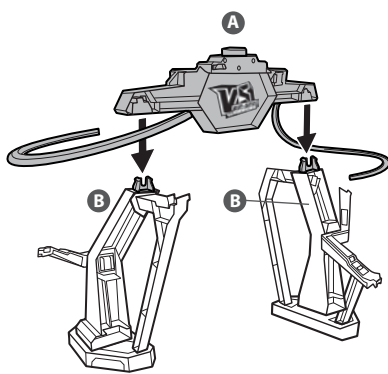


2 ASSEMBLY (CONTD.)

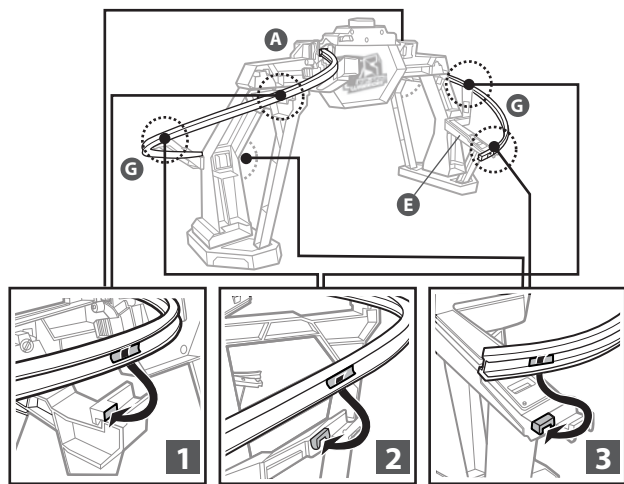
B. Attach ziplines to top launcher.



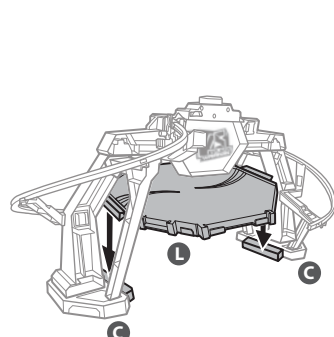
C. Attach top launcher to side supports.



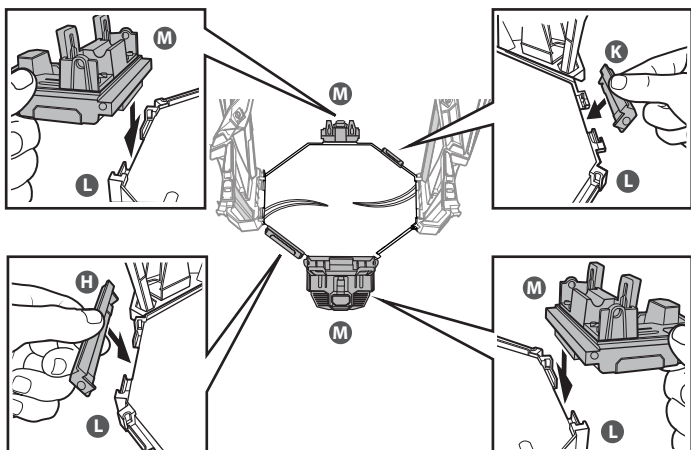
D. Connect ziplines to side supports.



E. Attach battle zone.

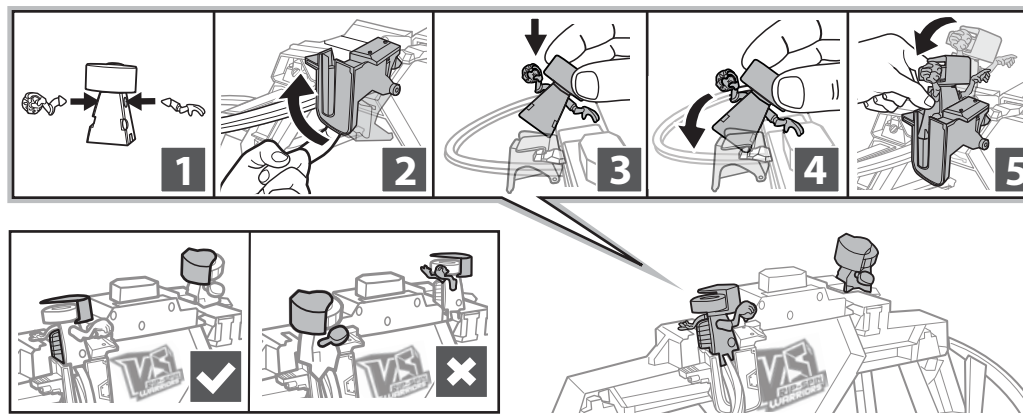


F. Attach launchers and side walls.



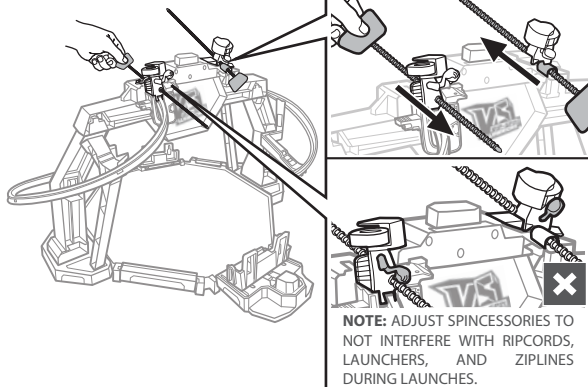
3 TWIN SPIRALS LAUNCH

A. Set up platforms and attach warriors.

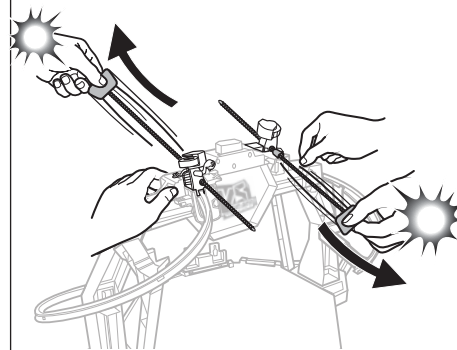


IMPORTANT: WARRIORS SHOULD BE FACING EACH OTHER WHEN ATTACHED TO PLATFORMS.

B. Insert ripcords into warriors through the cylindrical holes at the launchers.

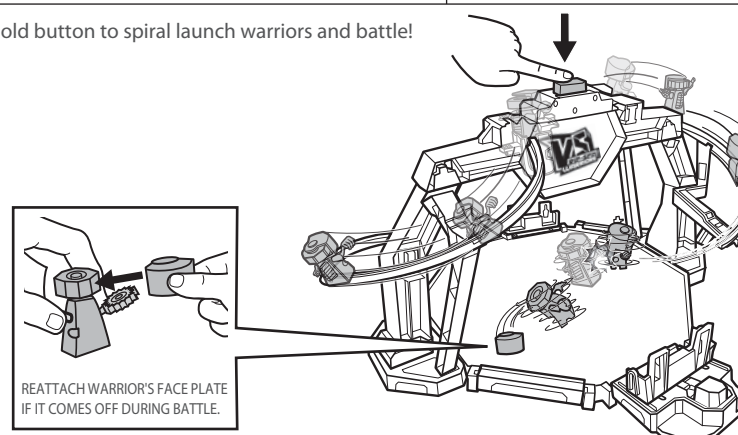


C. SWIFTLY pull ripcords out to rev warriors!



NOTE: ADJUST SPINNESORIES TO NOT INTERFERE WITH RIPCORDS, LAUNCHERS, AND ZIPLINES DURING LAUNCHES.

D. Press and hold button to spiral launch warriors and battle!



REATTACH WARRIOR'S FACE PLATE IF IT COMES OFF DURING BATTLE.

2

3

INSTRUCTION SHEET SPECIFICATIONS	
Toy:	DRP13
Toy No.:	
Part No.:	DOM
Trim Size:	A4
Folded Size:	
Type of Fold:	
# colors:	One
Colors:	black
Paper Stock:	FSC recycled paper
Paper Weight:	70 gsm
EDM No.:	