



**VIEW • MASTER®**

[www.view-master.com](http://www.view-master.com)

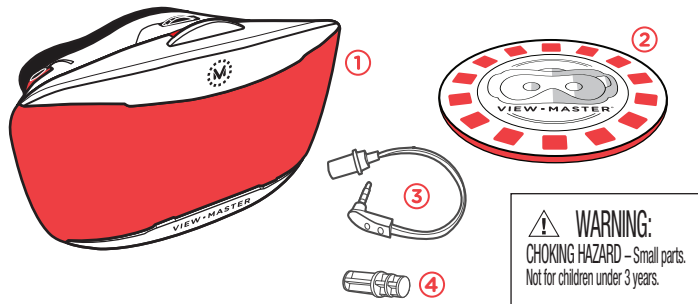
**VIEW • MASTER**  
VIRTUAL REALITY

7+



**INSTRUCTIONS**

## WHAT'S INSIDE?



- ① 1 View-Master® Deluxe VR Viewer
- ② 1 View-Master® Preview Reel
- ③ 1 Headphone Connector
- ④ 1 Small Cap

If you lose the preview reel, you can get the image tag to view Augmented Reality (AR) content at:  
[www.view-master.com/preview-reel](http://www.view-master.com/preview-reel)

## COMPATIBLE DEVICES

**View-Master® Deluxe VR Viewer works best with the following smartphone devices:**

Samsung Galaxy S7  
Samsung Galaxy S6  
Samsung Galaxy S6 Edge+  
Samsung Galaxy S5  
Samsung Galaxy Note 5  
Samsung Galaxy Note 4  
HTC One®  
Huawei Nexus 6P  
Motorola Nexus 6™  
Motorola Moto X (2014)  
Motorola Droid Turbo  
LG G5

LG G4™  
LG G3  
LG Nexus 5X  
LG Nexus 5  
iPhone® 6s Plus  
iPhone 6s  
iPhone 6 Plus  
iPhone 6  
iPhone 5s  
iPhone 5c\*  
iPhone 5\*  
iOS 8.1 and above

**NOTE:** View-Master® Deluxe VR Viewer may also work with newer model Android™ smartphones not listed above that have screens between 5 and 6 inches.  
\*View-Master® VR apps may not be optimized for iPhone 5 and iPhone 5C.

## 1. DOWNLOAD APP

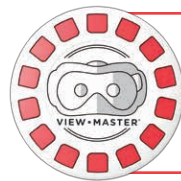
First, download any of the View-Master® Experience Pack apps from the App Store or Google Play. Take your pick from:

**View-Master® Batman: The Animated Series™**

**View-Master® Masters of the Universe®**

**View-Master® Discovery Underwater**

**View-Master® Nat Geo Dinosaurs**



The preview reel will allow you to unlock **sample** content from the Experience Packs.



Full content of an Experience Pack is available by purchasing the Experience Pack at retail or by making an in-app purchase.

Each sold separately, subject to availability.

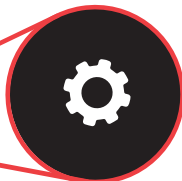


We reserve the right to terminate the Experience apps. See termination date on each Experience pack. Standard data rates may apply.

## 2. VIEWER PROFILE

### DO THIS FIRST FOR OPTIMAL PERFORMANCE!

- Be sure you've downloaded the most recent version of your View-Master® app.
- Follow the on-screen prompts to enter VR mode.



Small Gear Icon

- After you've been prompted to turn your phone horizontally, tap on the **small gear icon** located at the bottom of the screen.

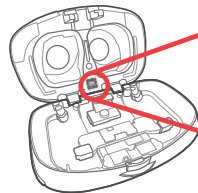


Switch viewer: VIEW-MASTER™ VR VIEWER

Switch Viewer

- Tap on **“Switch Viewer”**
- If the app asks for camera permissions, allow access to your camera.

### LOCATING THE QR CODE INSIDE YOUR VIEWER

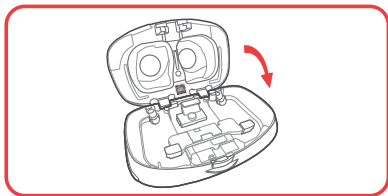
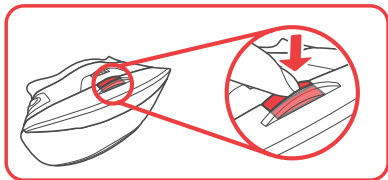


QR Code

- Scan the **QR code** on the inside bottom of the View-Master® Deluxe VR viewer.

### 3. CONNECT HEADPHONES

Press the button to open.

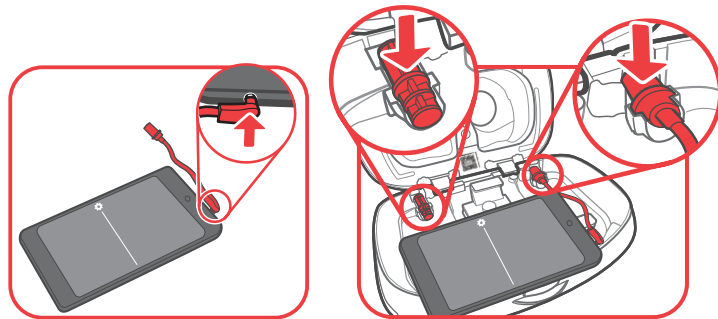


**Remove any case** from your smartphone then place it between the clamps in the View-Master® Deluxe VR Viewer so the screen is facing you. The top of your phone should be to the left.

**Note:** For optimal performance, do not use with a screen protector on your phone.

For Motorola Nexus 6™, place edge of phone under the upper clamps first, push up to spread clamps, then place bottom edge of phone into the lower clamp.

Locate your smartphone's headphone port (if applicable) and align the headphone connector on the same side.



Insert the connector into your smartphone. Insert the other end of the cable into the space shown.

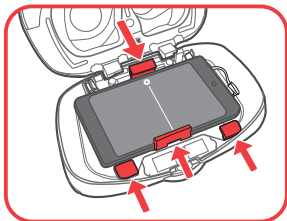
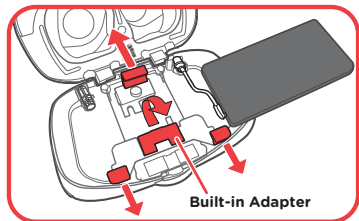
Insert the cap into the headphone connector space not being used.

Plug your headphones into the headphone jack on the outside of the View-Master®. Make sure you are plugging your headphones into the same side the headphone jack extender is plugged into.

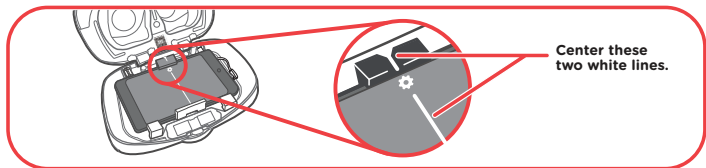
Smartphone and headphones not included.

## 4. INSTALL SMARTPHONE

For iPhone 5s, iPhone 5c or iPhone 5, flip up the built-in adapter.

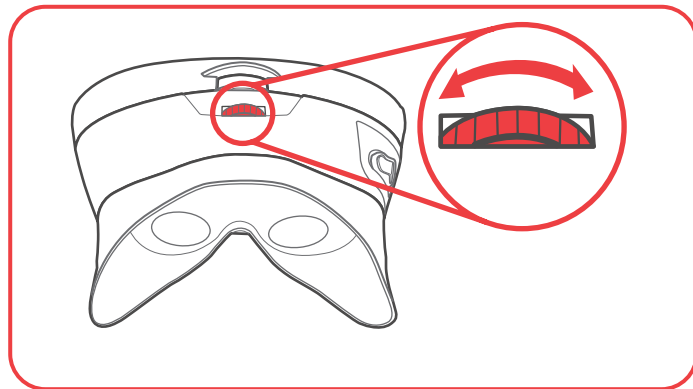


**Aligning Your Viewer:** It is **very important** that you center your device in the View-Master® Deluxe VR Viewer. Line up the divider in the middle of the screen with the white mark on the lower clamp.



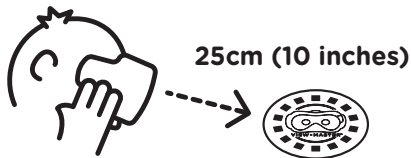
## 5. FOCUS IMAGE

To bring images into focus, simply move the Focus Wheel right or left until the image is sharp.



## 6. USING THE PREVIEW REEL

- Make sure a View-Master® Experience app is launched.
- Place the preview reel on a flat surface.
- Look through the viewer at the reel from a distance of 10 inches or less.
- Digital icons will appear above the reel. This effect is called Augmented Reality, or **AR**.



Select which experience you want to explore by looking at the appropriate AR icon and pulling the lever.

Now it's time to see the world in a whole new way. Enjoy!

## TROUBLESHOOTING

**TO ADJUST THE VOLUME** - before placing your smartphone in the viewer, you can use either the physical volume buttons on the phone or go to **SETTINGS** in the app.

**IF THE AR ICONS DON'T APPEAR WHEN YOU LOOK AT THE REEL** - move the viewer closer to the reel (less than 10 inches).

**NOTE:** AR icons work best when looking straight down at the reel, and in a well-lit room.

**IF THE TINTED WINDOW POPS FROM THE VIEWER** - orient the window so the View-Master® icon is positioned at the top then push the window into the back of the viewer until it snaps into place.

**IF THE 3D EFFECT IS BLURRY** - Use the Focus Wheel. If this does not work, open the View-Master® Deluxe VR Viewer and re-center your device. Also, be sure you have followed the instructions under "Viewer Profile" in this booklet and scanned the QR code.

For additional help visit [www.view-master.com/troubleshooting](http://www.view-master.com/troubleshooting)

## WARNINGS

Calls or other incoming notifications may interrupt your experience.

**CAUTION:** This viewer is intended for viewing 3D content. Some users may experience motion sickness while viewing 3D images. If you experience dizziness or disorientation, immediately discontinue use of this device until the discomfort subsides.

**NOTE:** Please be aware of your surroundings. Users should remain stationary while using this product. Standing in a single spot is optimal.

### THE VIEW-MASTER® DELUXE VR VIEWER IS NOT A PROTECTIVE CASE.

Works with specially formatted content only.

Images appear on your device touch screen.

Mattel is not responsible for content distributed through the App Store or Google Play™, except for Mattel generated content. Please refer to Apple Inc. and Google Terms of Service.

### WARNING

Prevent serious injury.

Periodically check electronic device for cracks, broken glass or other damage. If damaged, immediately remove from this product.

## LEGAL

©2016 Mattel. All Rights Reserved. Mattel, Inc., 636 Girard Avenue, East Aurora, NY 14052, U.S.A. Consumer Services 1-800-524-8697. Mattel U.K. Ltd., Vanwall Business Park, Maidenhead SL6 4UB. Helpline 01628 500303. Mattel Australia Pty Ltd., Richmond, Victoria. 3121. Consumer Advisory Service - 1300 135 312. Mattel East Asia Ltd., Room 503-09, North Tower, World Finance Centre, Harbour City, Tsimshatsui, HK, China. Tel: (852) 3185-6500. Diimport & Diedarkan Oleh: Mattel Southeast Asia Pte. Ltd., No 19-1, Tower 3 Avenue 7, Bangsar South City, No 8, Jalan Kerinchi, 59200 Kuala Lumpur, Malaysia. Tel: 03-78803817, Fax: 03-78803867. Mattel Europa B.V., Gondel 1, 1186 MJ Amstelveen, Nederland. Apple, the Apple logo and iPhone are trademarks of Apple Inc., registered in the U.S. and other countries. App Store is a service mark of Apple Inc.

Google Cardboard, Android and Google Play™ are trademarks of Google Inc.

Nexus is a trademark of Google Inc.

Samsung Galaxy and Galaxy Note are trademarks of Samsung Electronics Co. Ltd.

LG and the LG logo are registered trademarks of LG Electronics, Inc. G3 and G4 are trademarks of LG Electronics, Inc.

MOTOROLA, MOTO X and the Stylized M Logo are trademarks or registered trademarks of Motorola Trademark Holdings, LLC. DROID is a trademark of Lucasfilm Ltd.

HTC, HTC ONE, and the HTC logo are trademarks of HTC Corporation.

© 2016 Viacom International Inc. All Rights Reserved. Nickelodeon, Teenage Mutant Ninja Turtles and all related titles, logos and characters are trademarks of Viacom International Inc.



© 2016 National Geographic Partners LLC. All rights reserved. NATIONAL GEOGRAPHIC and Yellow Border Design are trademarks of the National Geographic Society, used under license.

©2016 Discovery Communications, LLC. Discovery Channel and the Discovery Channel logo are trademarks of Discovery Communications, LLC, used under license. All rights reserved. discovery.com



BATMAN and all related characters and elements © & ™ DC Comics and Warner Bros. Entertainment Inc. The DC LOGO: TM & © DC. WB SHIELD: TM & © WBEI. (s16)



www.esa.int

Images courtesy NASA/JPL - Caltech.



DTH61-0970G1  
1100893964-DOM

