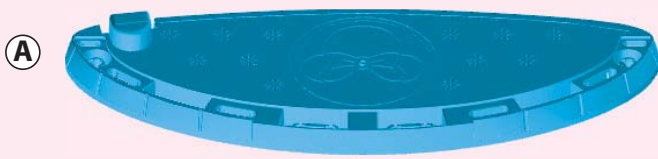


Minnie's Happy Helpers Home Sweet Headquarters

INSTRUCTIONS

Keep these instructions for future reference as they contain important information.

ASSEMBLY PARTS



F



G



H



J



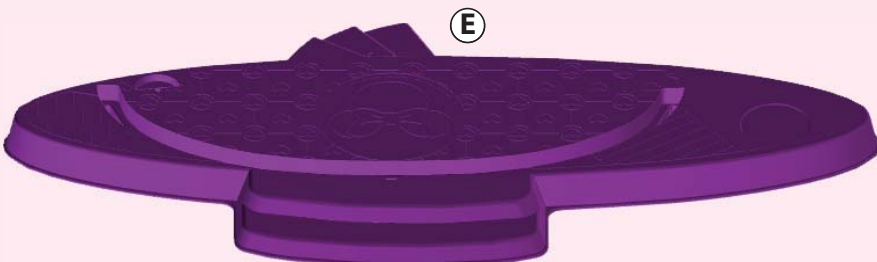
I



K



L

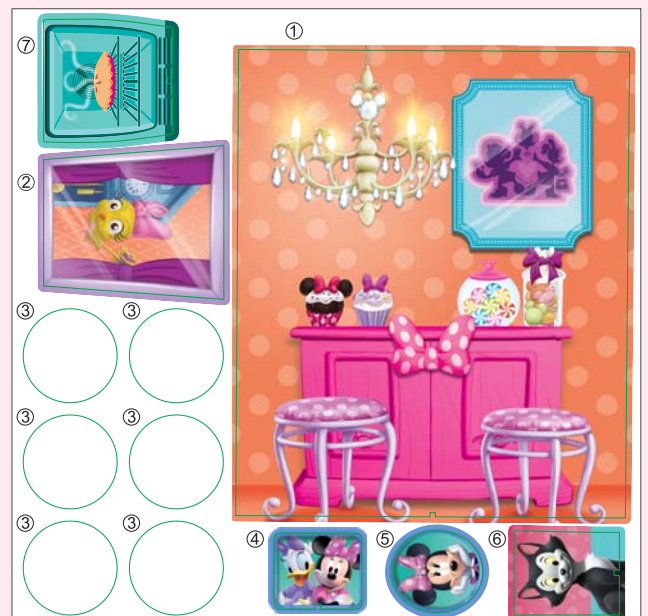
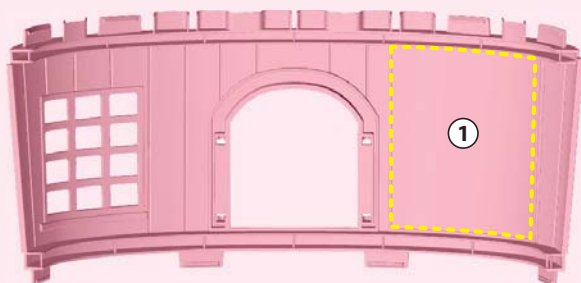
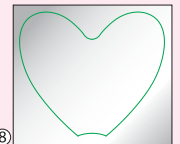
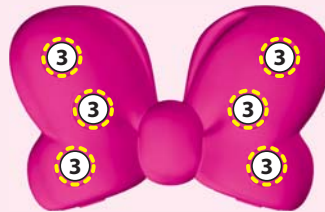
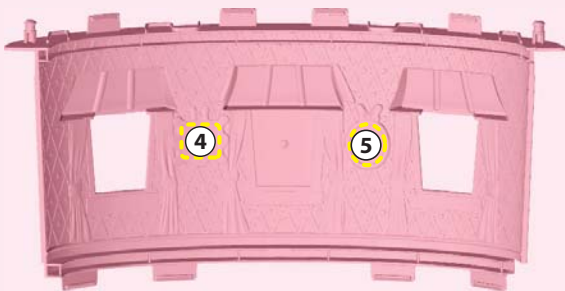


ADDITIONAL PLAY PIECES



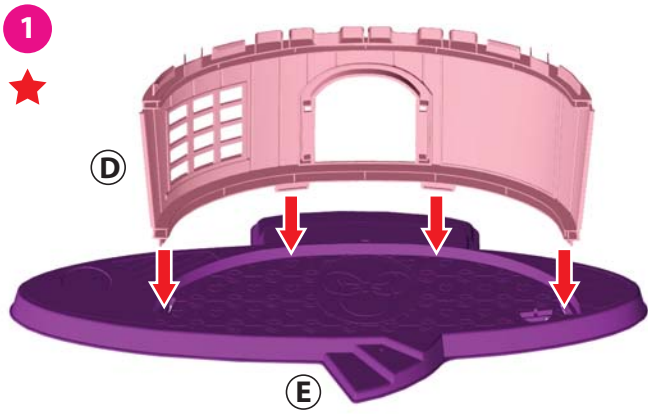
LABEL PLACEMENT

Add labels to the playset using the corresponding numbers on the label sheet (included).

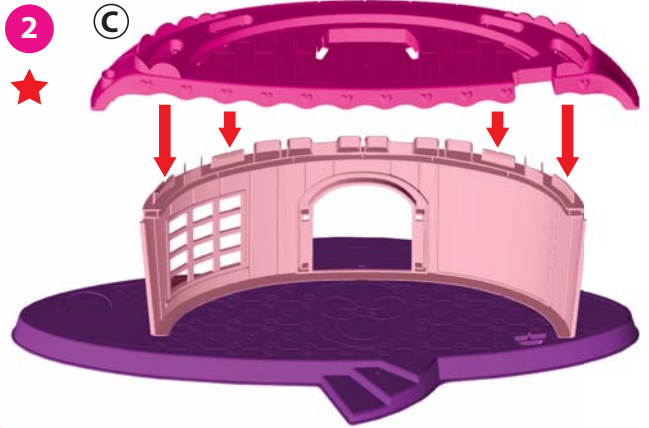


ASSEMBLY

1

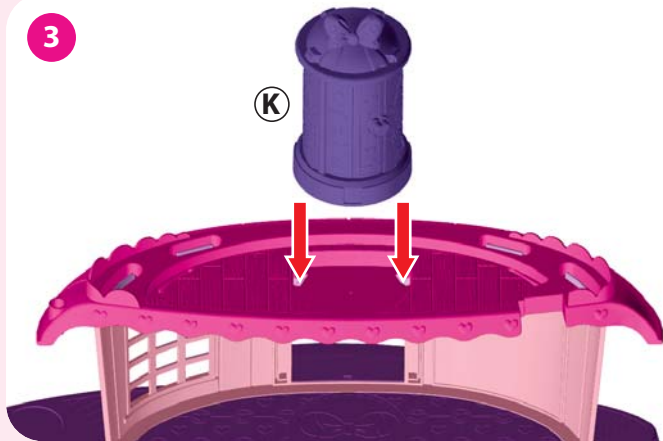


2

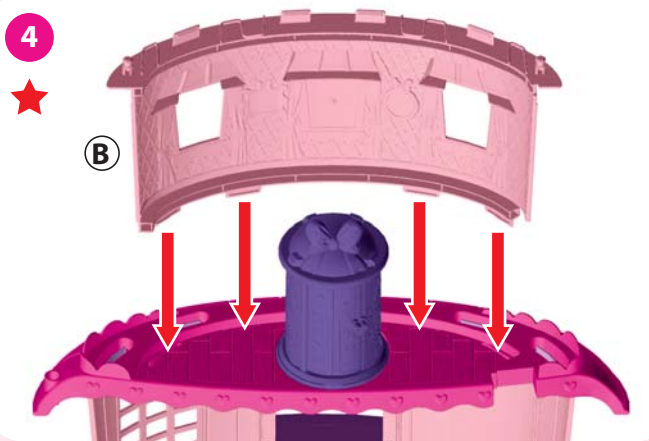


3

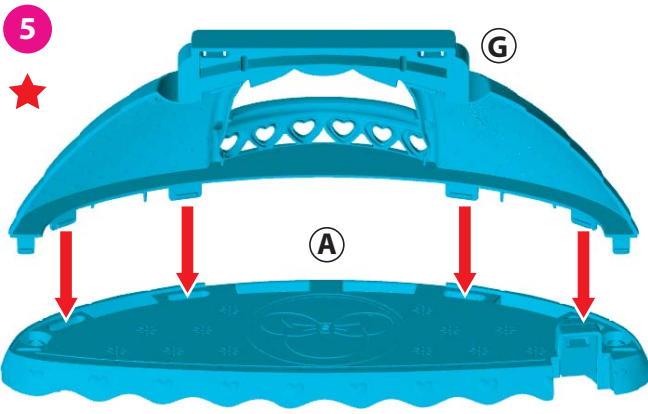
(K)



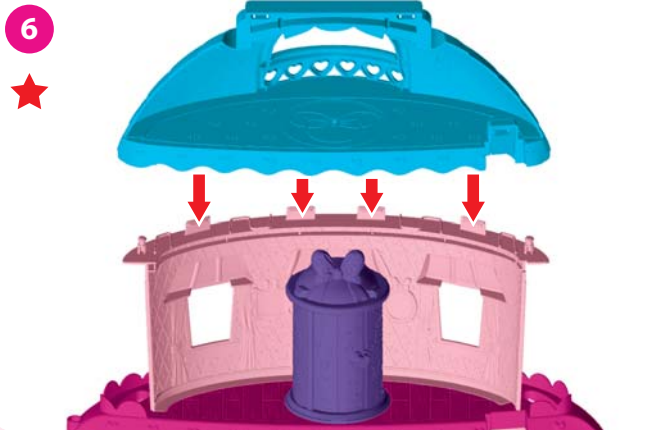
4



5

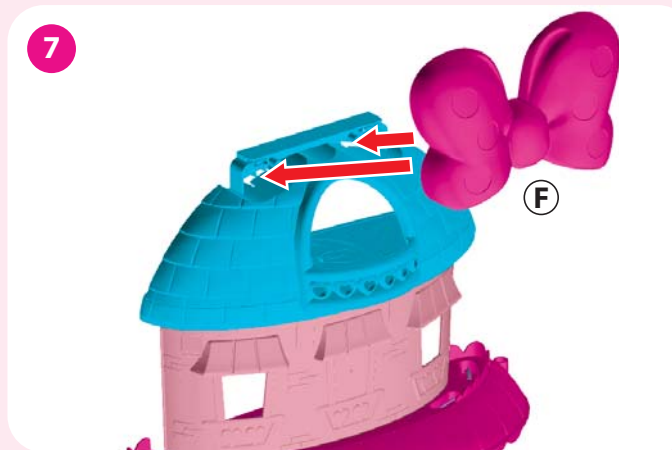


6



7

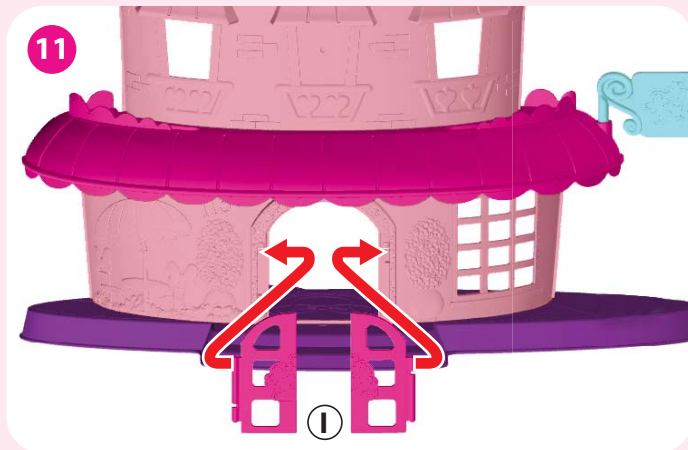
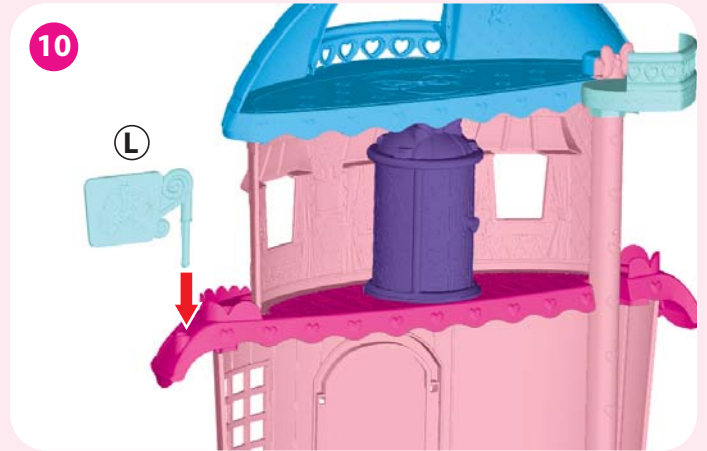
(F)



8



ASSEMBLY



★ **NOTE:** Steps marked with a star are “one-time snaps”. Press firmly until each part clicks into place. Once these pieces are snapped together, they cannot be taken apart.

CONSUMER ASSISTANCE
 1-800-432-5437 (US & Canada)
 1300 135 312 (Australia)
service.fisher-price.com

Fisher-Price, Inc., 636 Girard Avenue, East Aurora, NY 14052.
 Hearing-impaired consumers: 1-800-382-7470.

Outside the United States:
 Canada: Mattel Canada Inc., 6155 Freemont Blvd., Mississauga, Ontario L5R 3W2; www.service.mattel.com.
 Great Britain: Mattel UK Ltd, Vanwall Business Park, Maidenhead SL6 4UB. Helpline: 01628 500303. www.service.mattel.com/uk
 Mattel Europa B.V., Gondel 1, 1186 MJ Amstelveen, Nederland.
 Australia: Mattel Australia Pty. Ltd., 658 Church Street, Locked Bag #870, Richmond, Victoria 3121 Australia.
 New Zealand: 16-18 William Pickering Drive, Albany 1331, Auckland.
 SOUTH AFRICA: Mattel South Africa (PTY) LTD, Office 102 I3, 30 Melrose Boulevard, Johannesburg 2196.

© Disney
 Visit DisneyJunior.com
 ©2016, 2017 Mattel. All Rights Reserved.
 ® and ™ designate U.S. trademarks of Mattel, except as noted. **PRINTED IN CHINA.**
 Mattel East Asia Ltd., Room 503-09, North Tower, World Finance Centre, Harbour City, Tsimshatsui, HK, China. Tel.: (852) 3185-6500.

DTR38-0970-G1
 1101242719-DOM

DTR38

